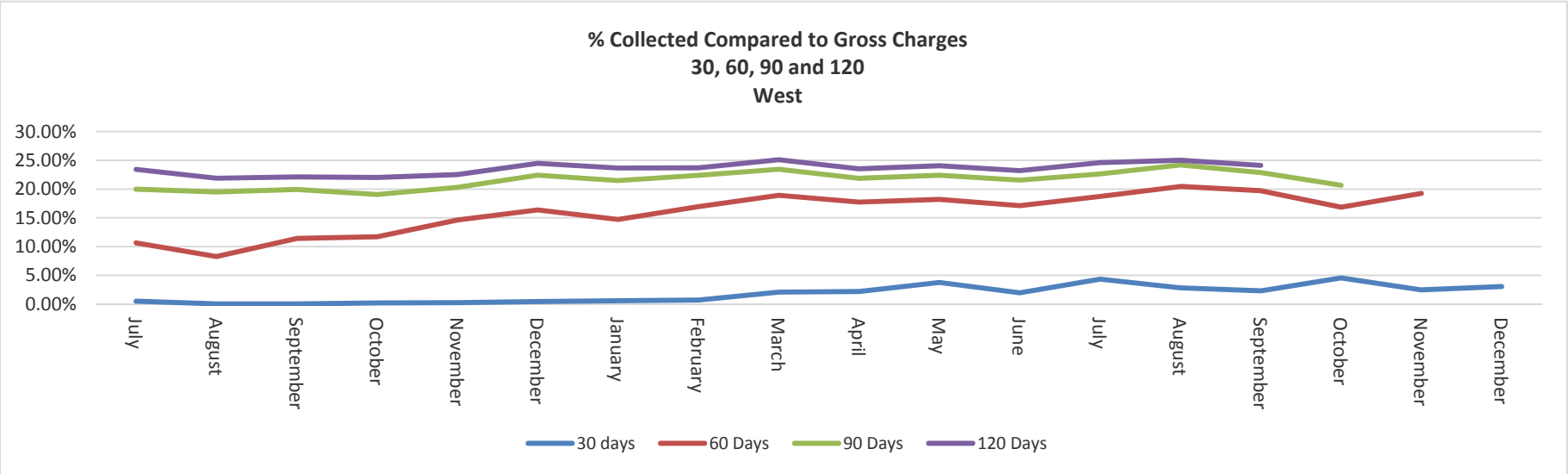
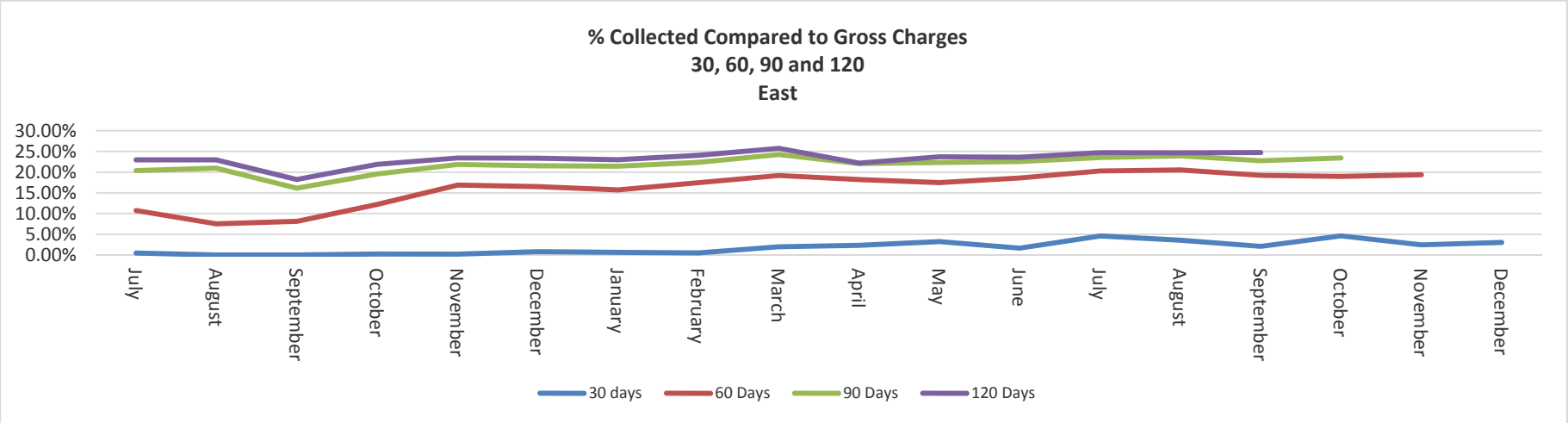


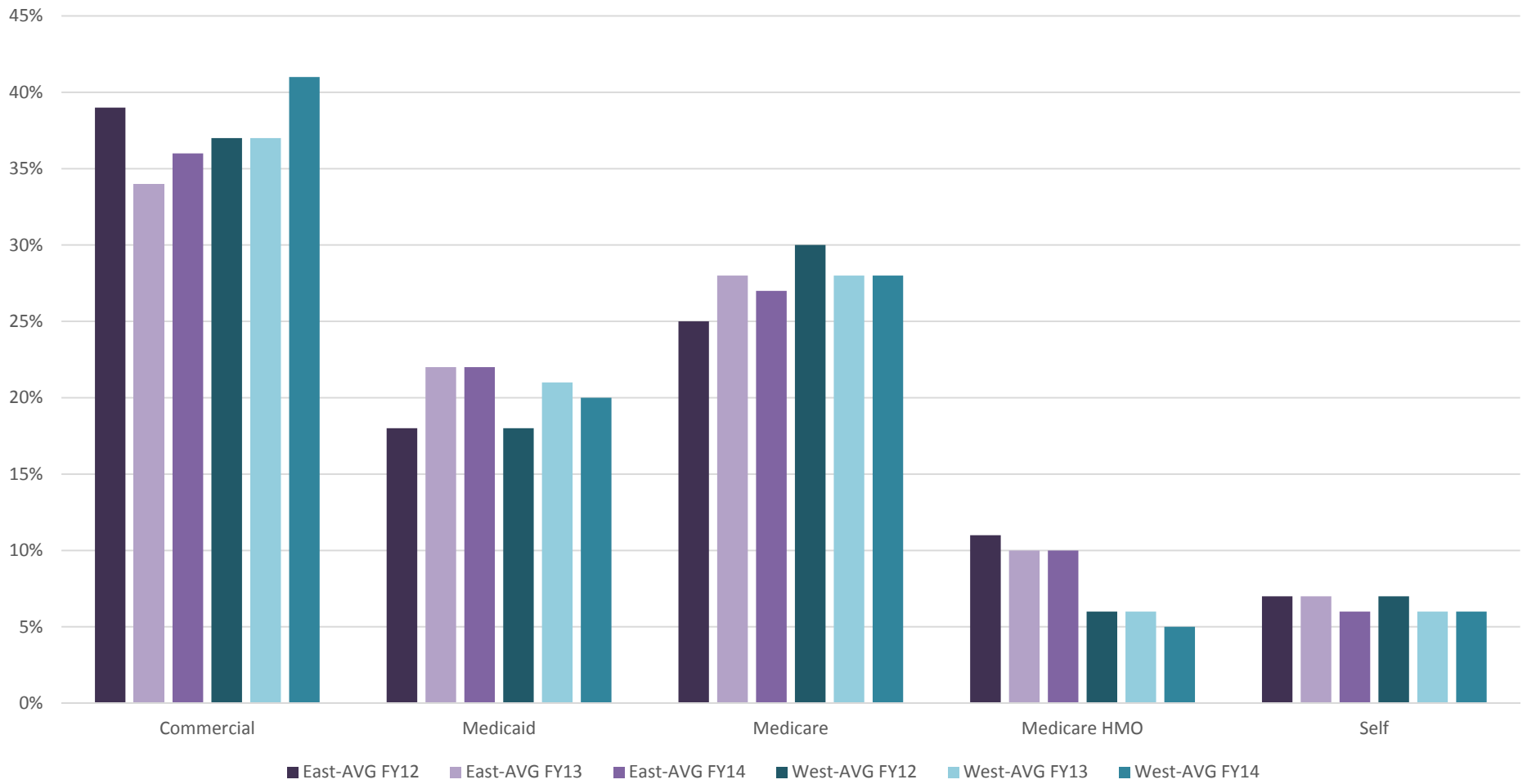
**Patient Financial Services
Key Performance Indicators
December 2014**

**% Collected Compared to Gross Charges
30, 60, 90 and 120 Days**



This shows more cash is coming in quicker than previous years. We have went from collecting 11% of gross charges within 90 days to collecting on average 20% of gross charges within 90 days. This is compared to gross charges not net charge.

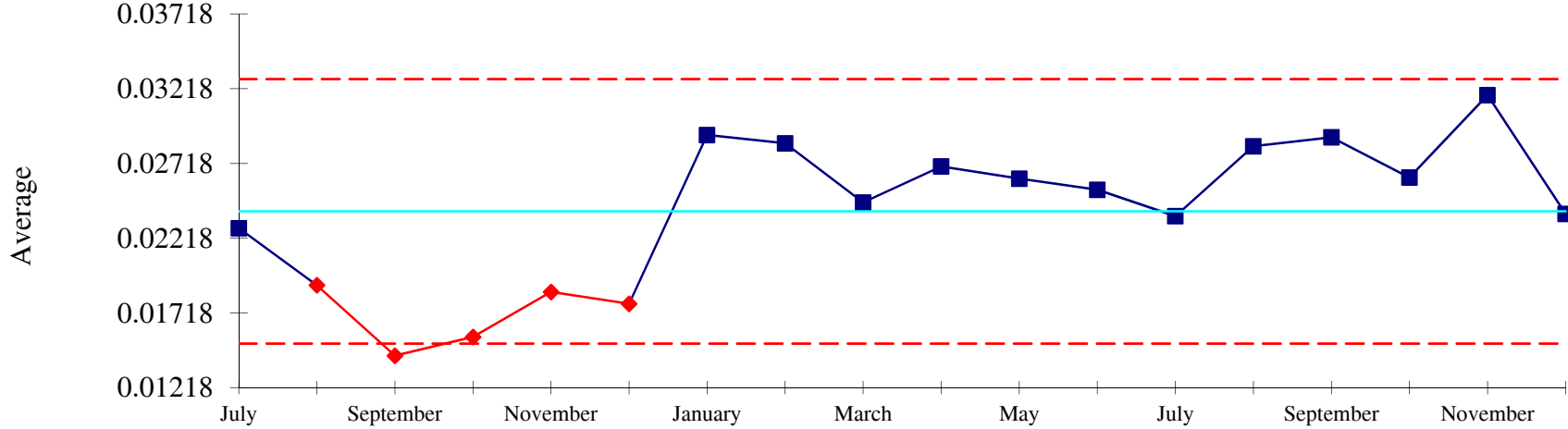
% of Average Weekly Payor Mix Through 12/31/2014



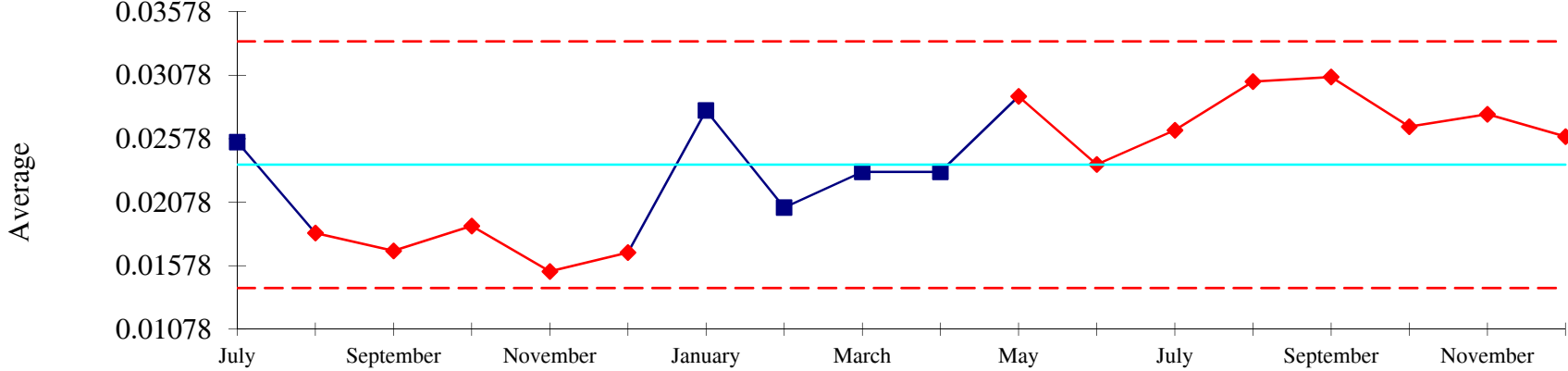
Higher Percent of Medicaid and Medicare HMO will result in lower cash due to lower payments and higher patient co-pays. Higher commercials could be less cash due higher deductibles.

Levels of Service

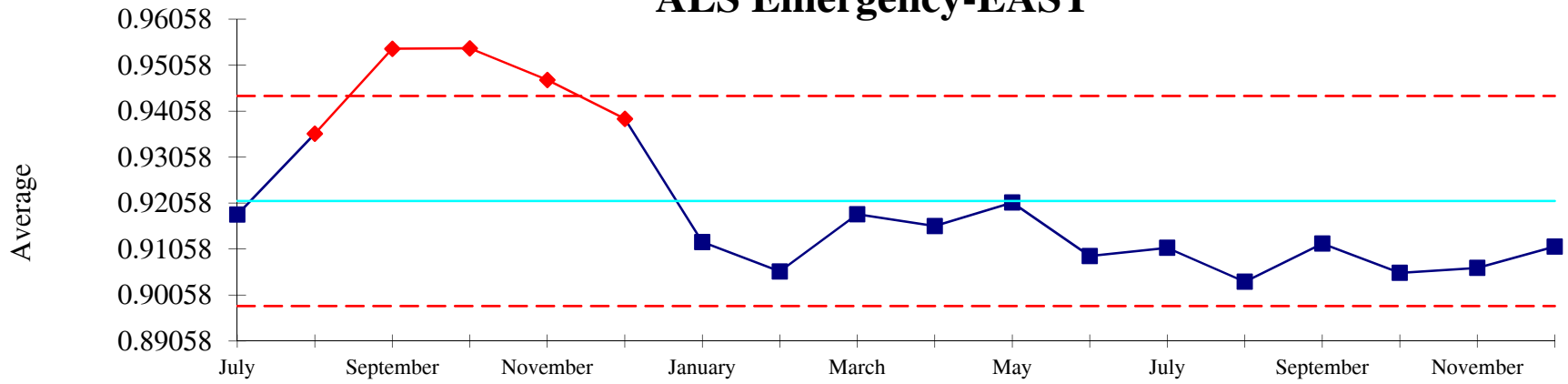
SCT/ALS2-EAST



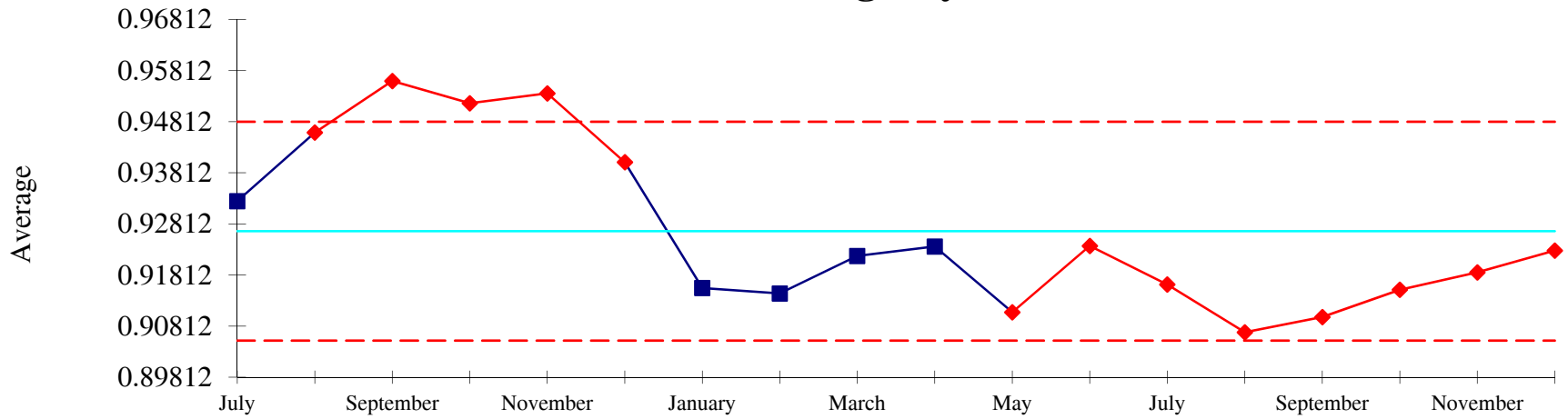
SCT/ALS2-WEST



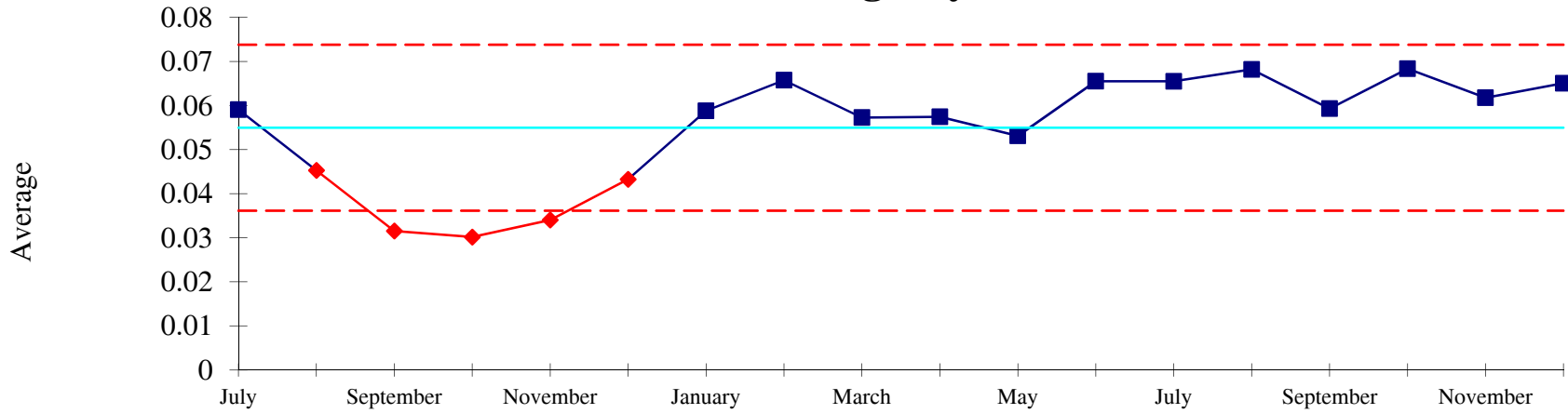
ALS Emergency-EAST



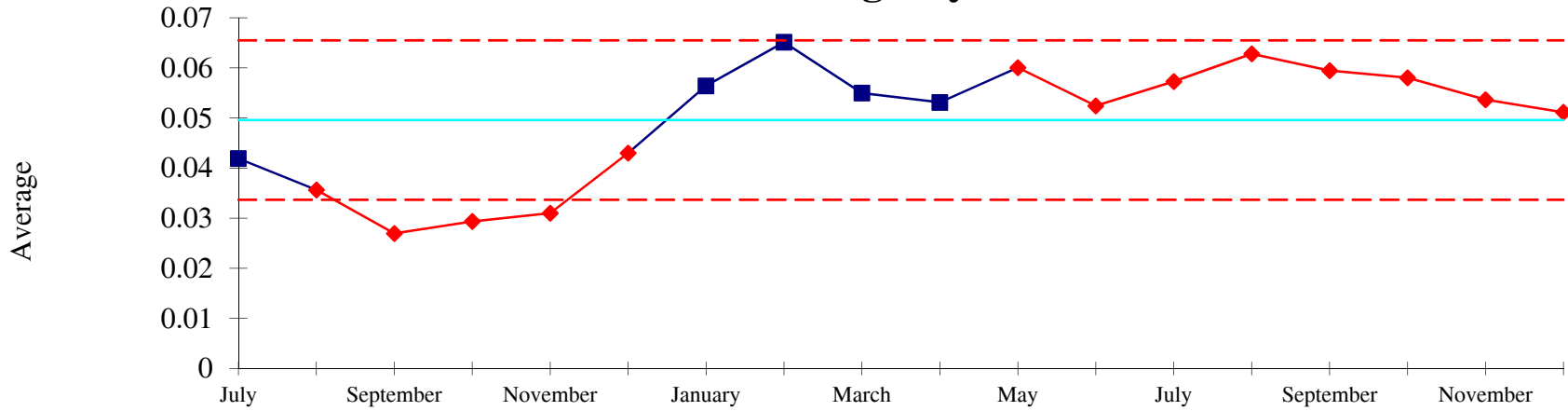
ALS Emergency-WEST



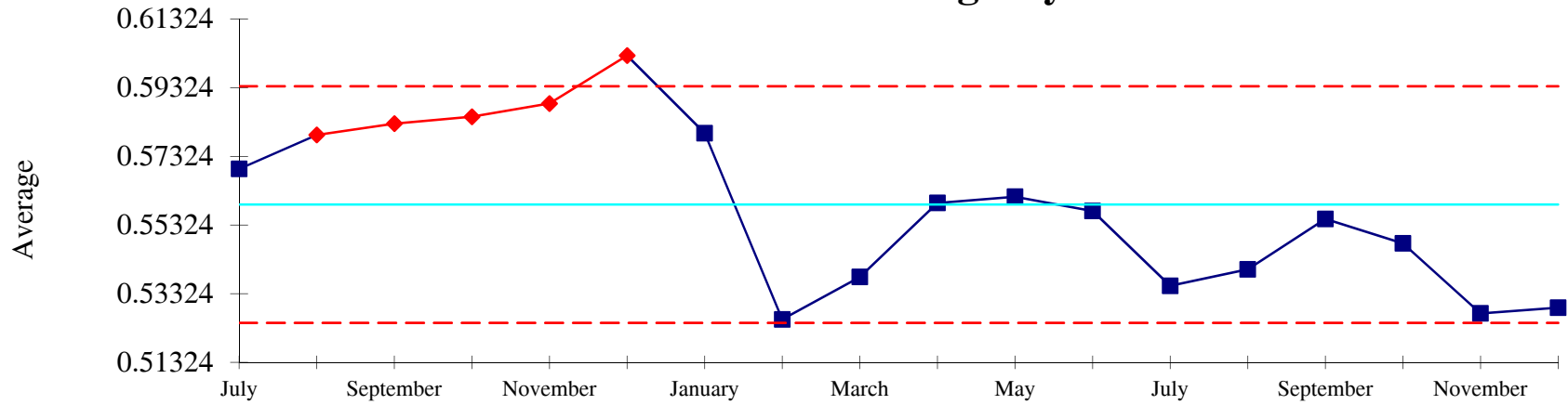
BLS Emergency-EAST



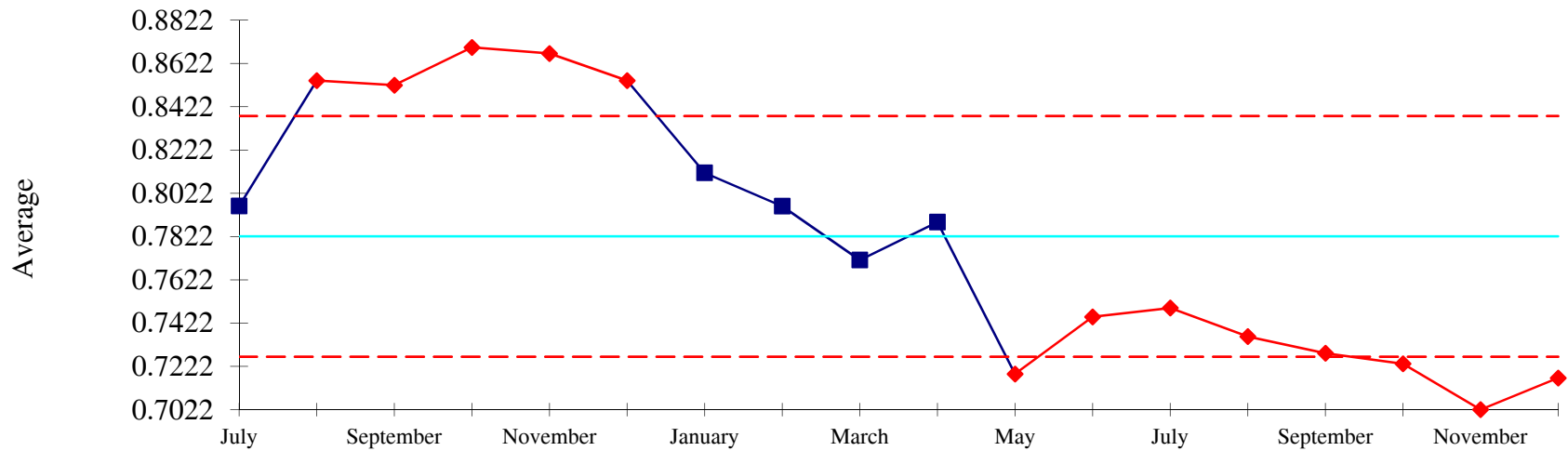
BLS Emergency-WEST



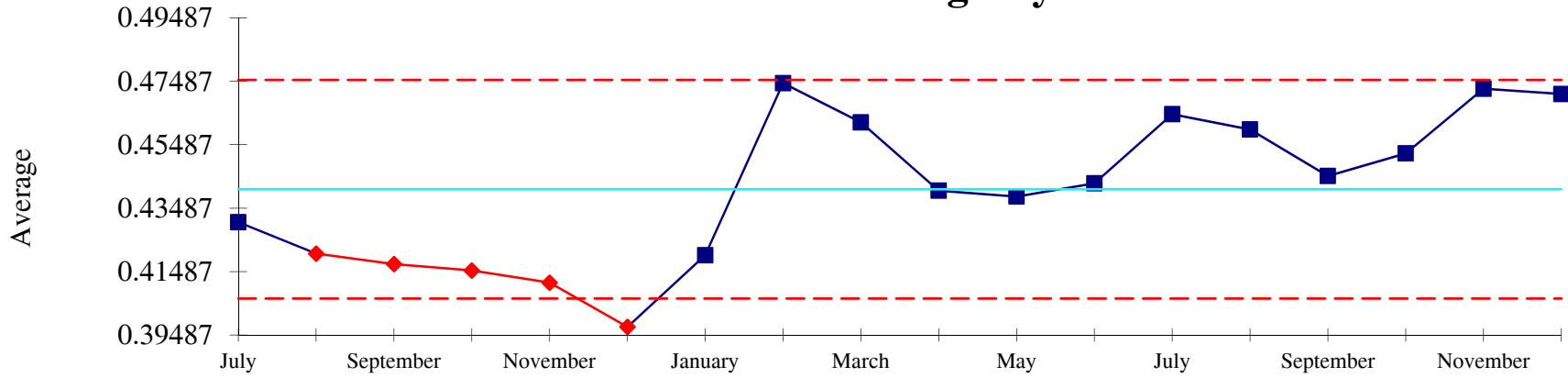
ALS Non-Emergency-EAST



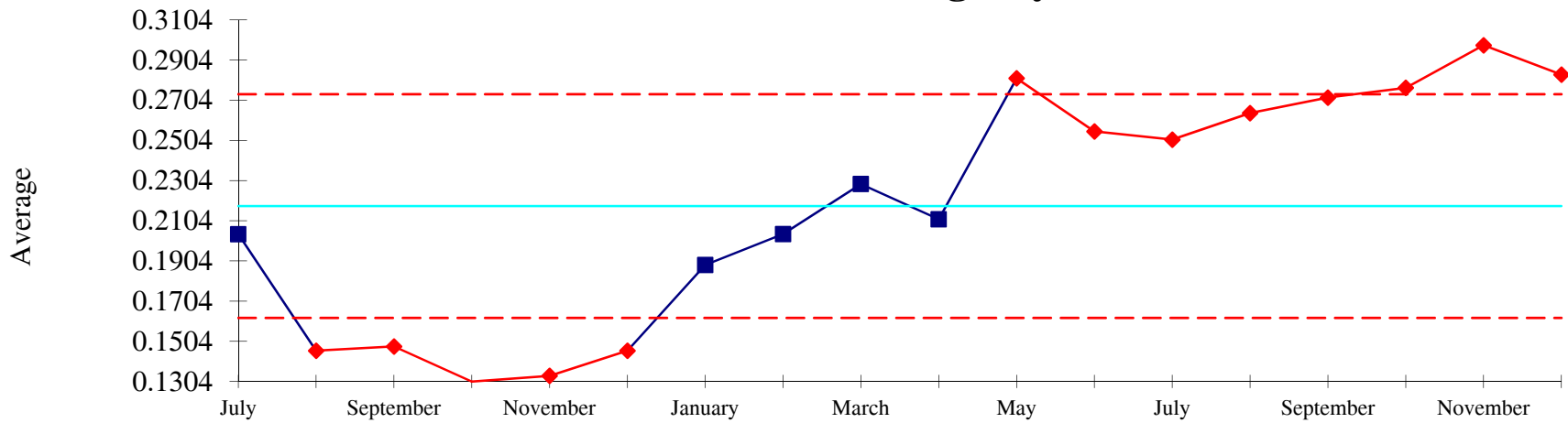
ALS Non-Emergency-WEST



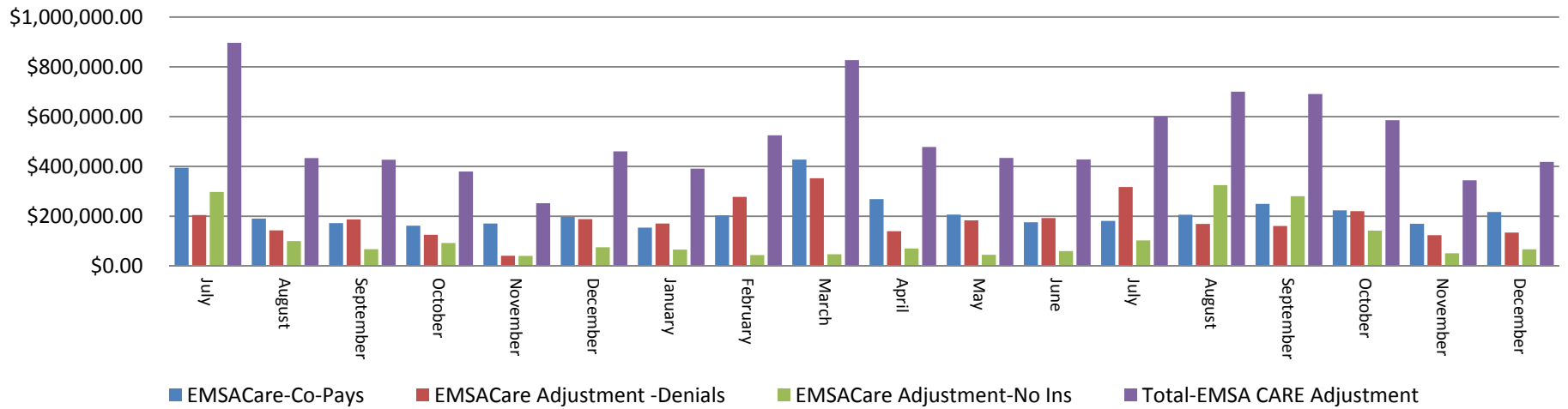
BLS Non Emergency-EAST



BLS Non Emergency-WEST



EMSACare Adjustments East



EMSACare Adjustments West

