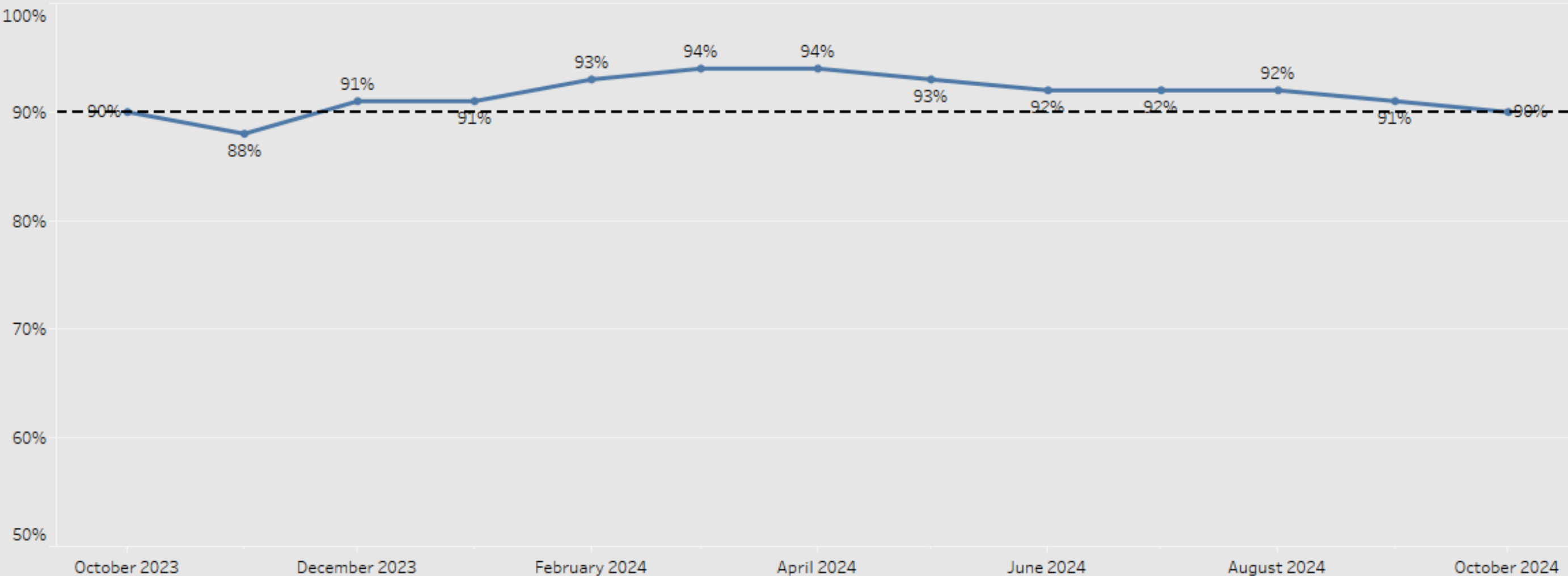


Priority One Response Time Compliance Eastern Division

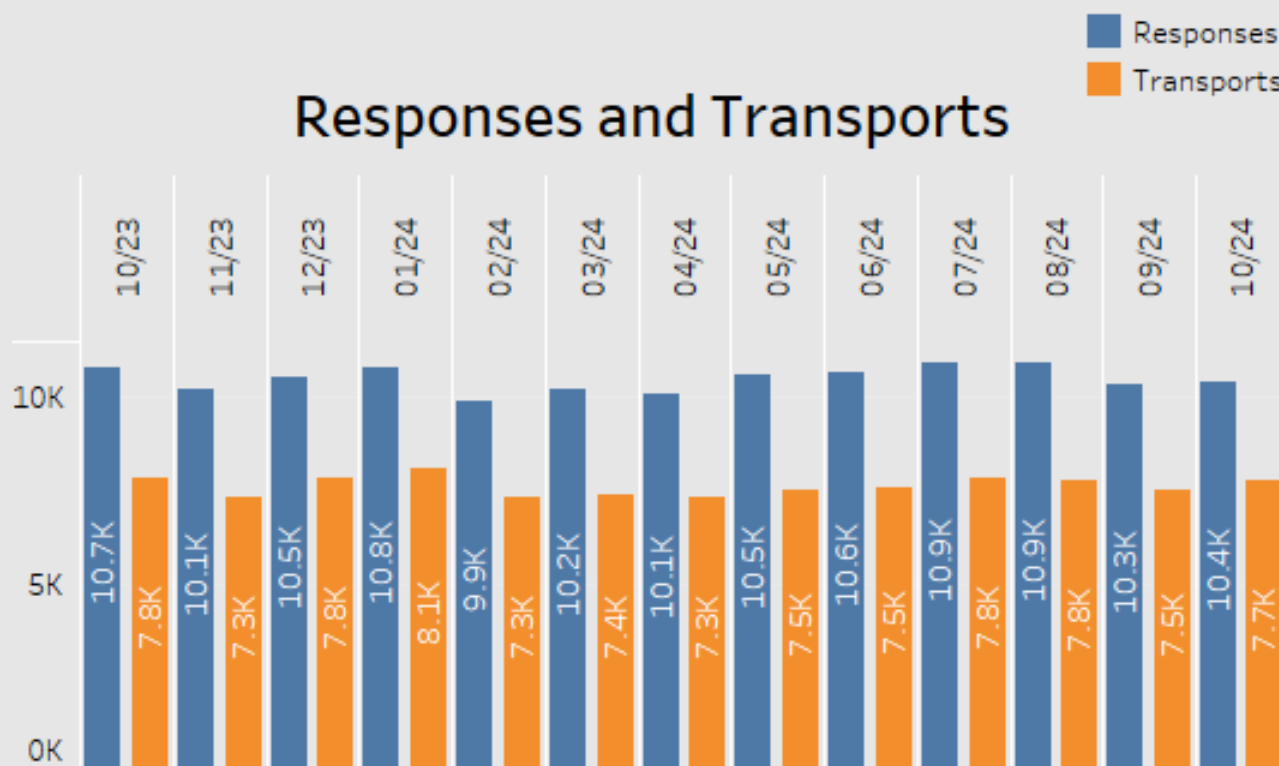
October 2024

90%

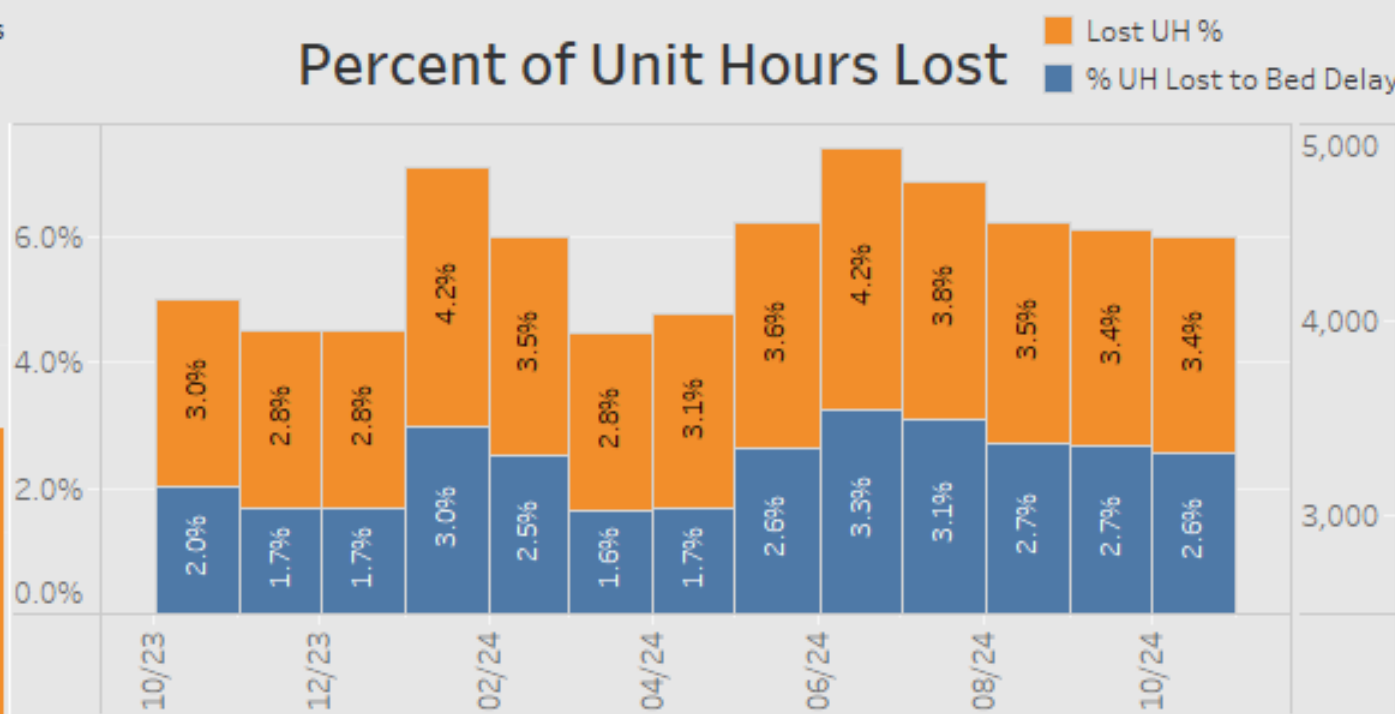


EMSA's Eastern Division transported over 7,700 patients in October, a 4% increase from the previous month. Bed delay accounted for 3% of total unit hour production, or 15.8 hours/day. The Eastern Division produced 78% of the unit hour goal for October.

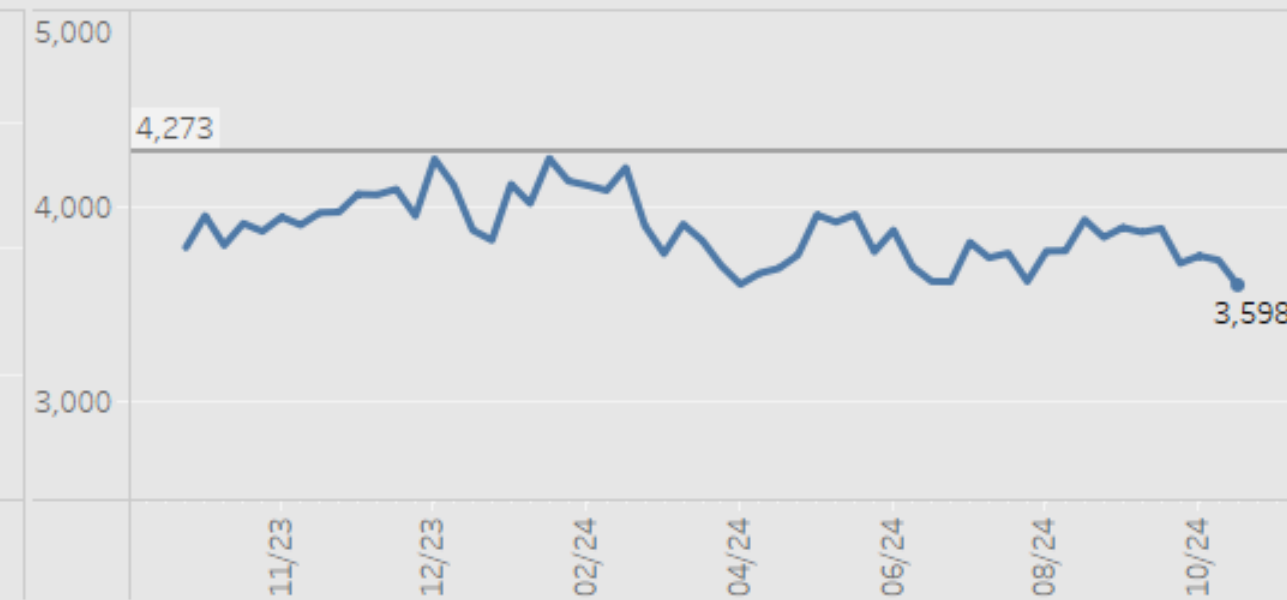
Responses and Transports



Percent of Unit Hours Lost



Unit Hours Produced

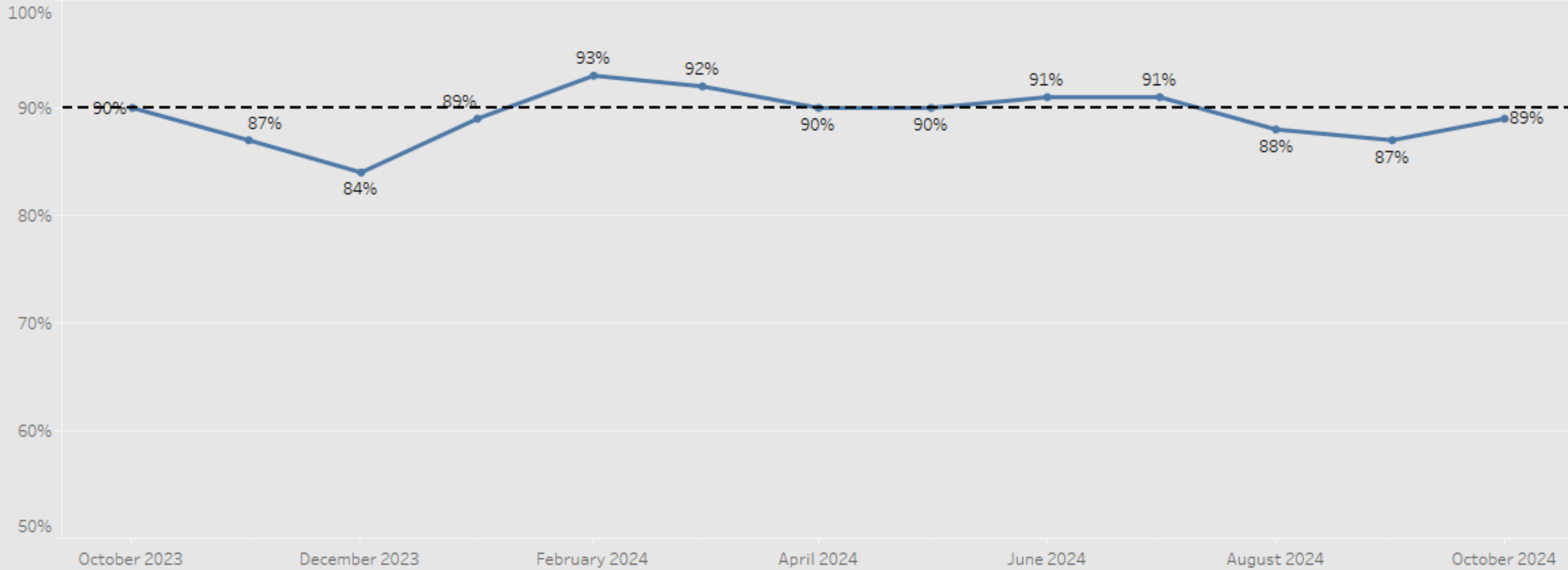


The compliance standard is 90%, as set by the EMS Ordinance

Priority One Response Time Compliance Western Division System

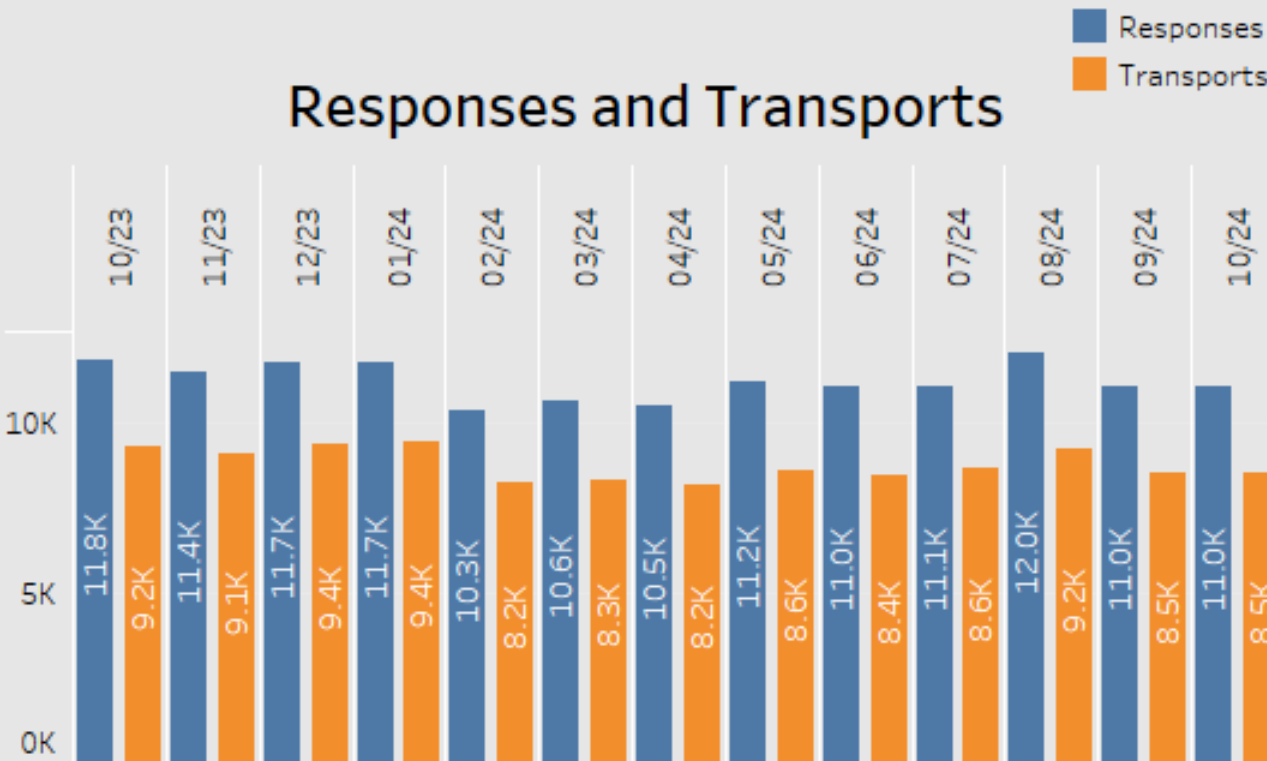
October 2024

89%

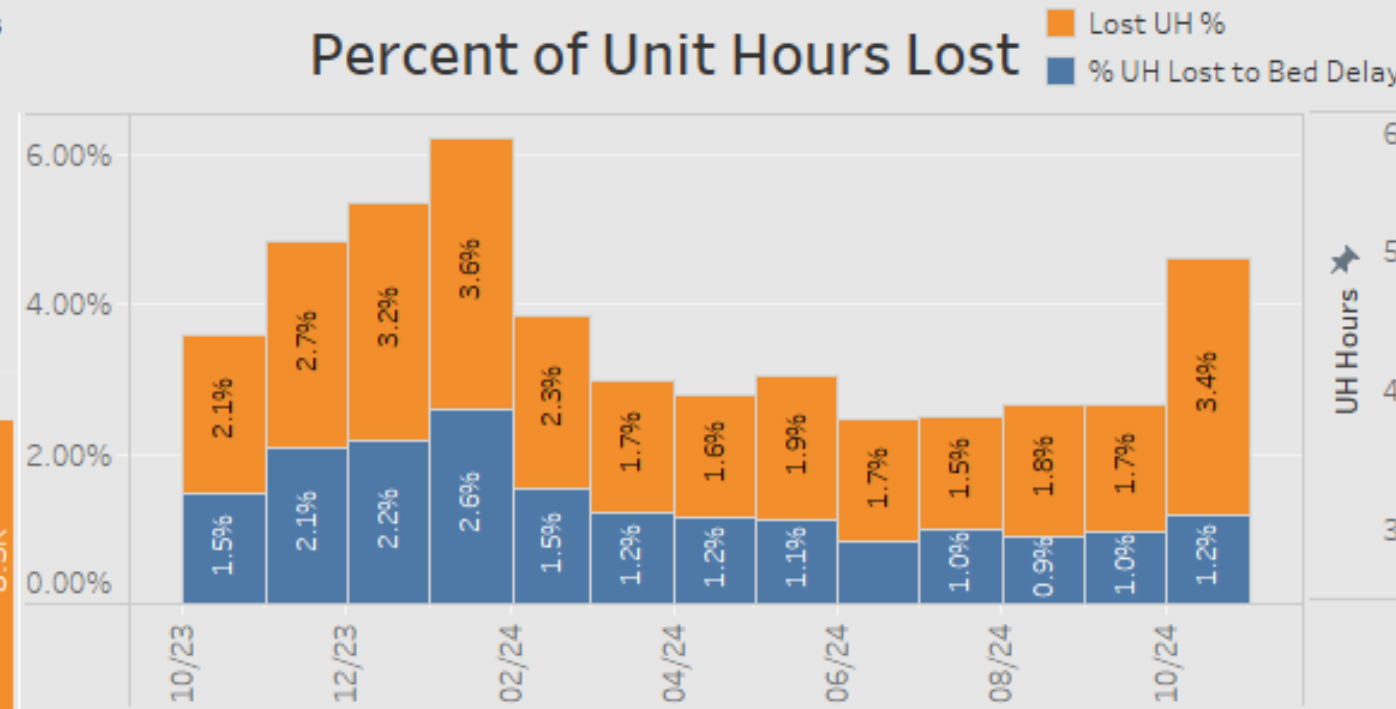


The Western Division System transport volume remained flat over last month with 8,500 transports. Bed delay accounted for 1.5% of total unit hours produced, or 9.29 hours/day. EMSA and OKCFD produced 80% of the Unit Hour goal for October.

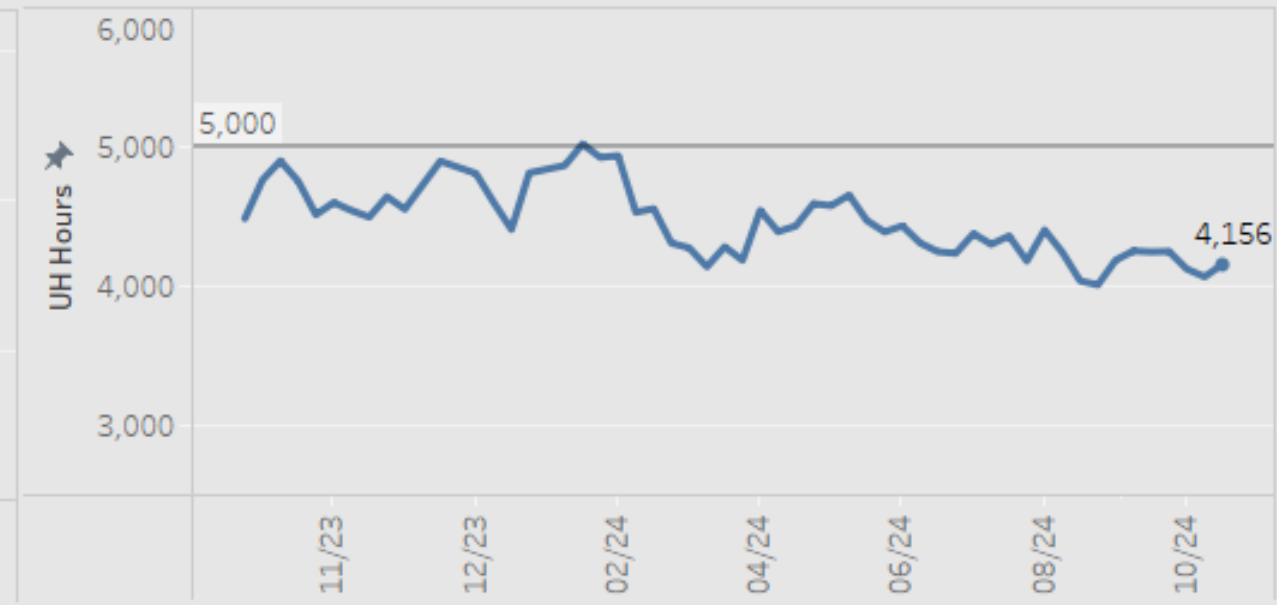
Responses and Transports



Percent of Unit Hours Lost



Unit Hours Produced

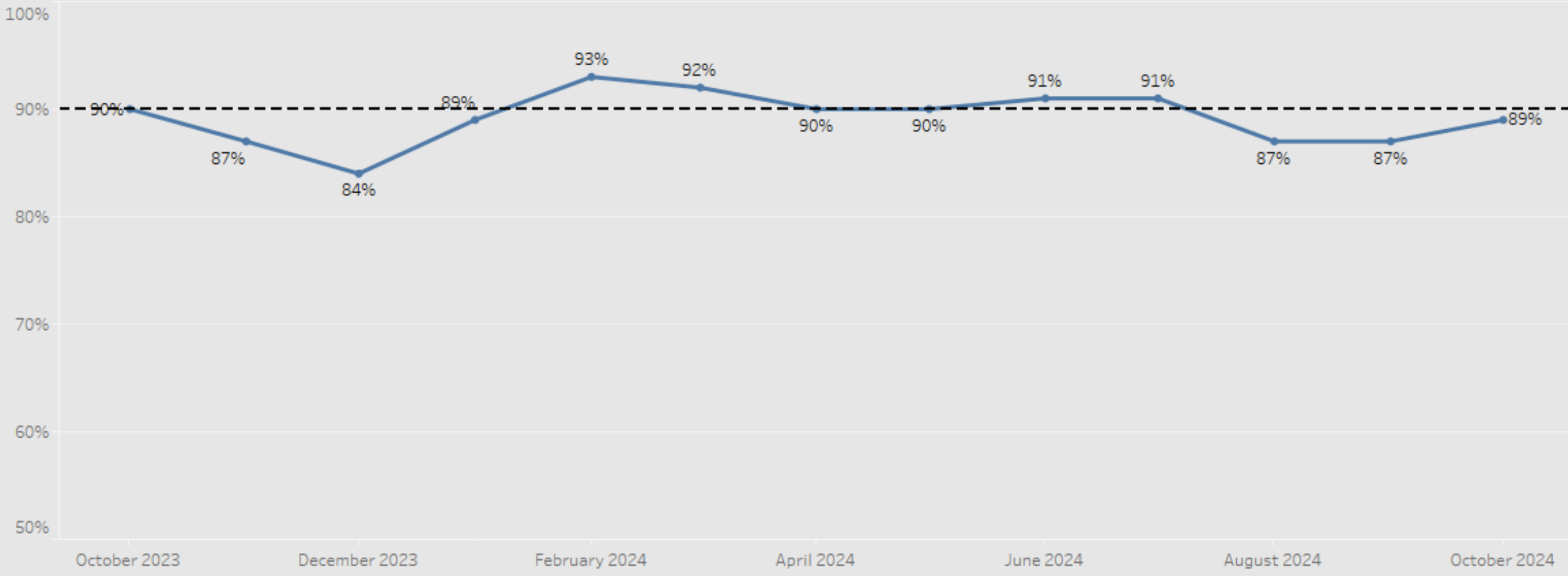


The compliance standard is 90%, as set by the EMS Ordinance

Priority One Response Time Compliance Western Division EMSA

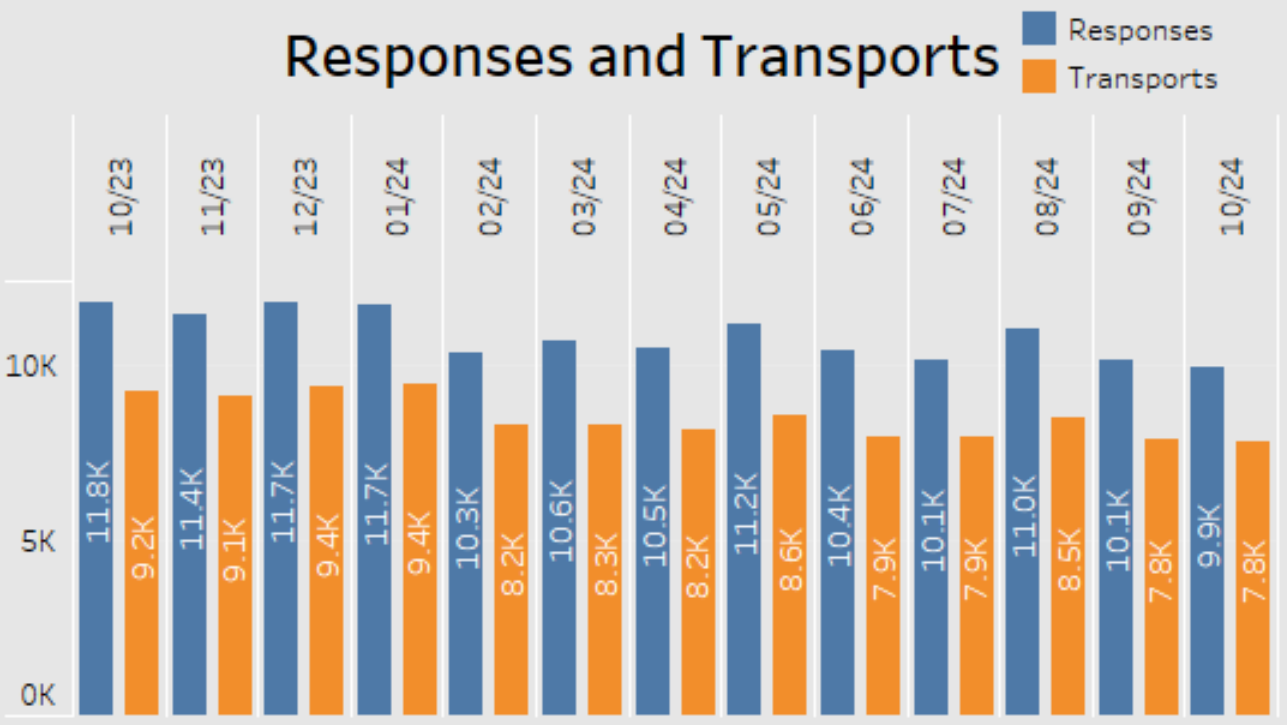
October 2024

89%

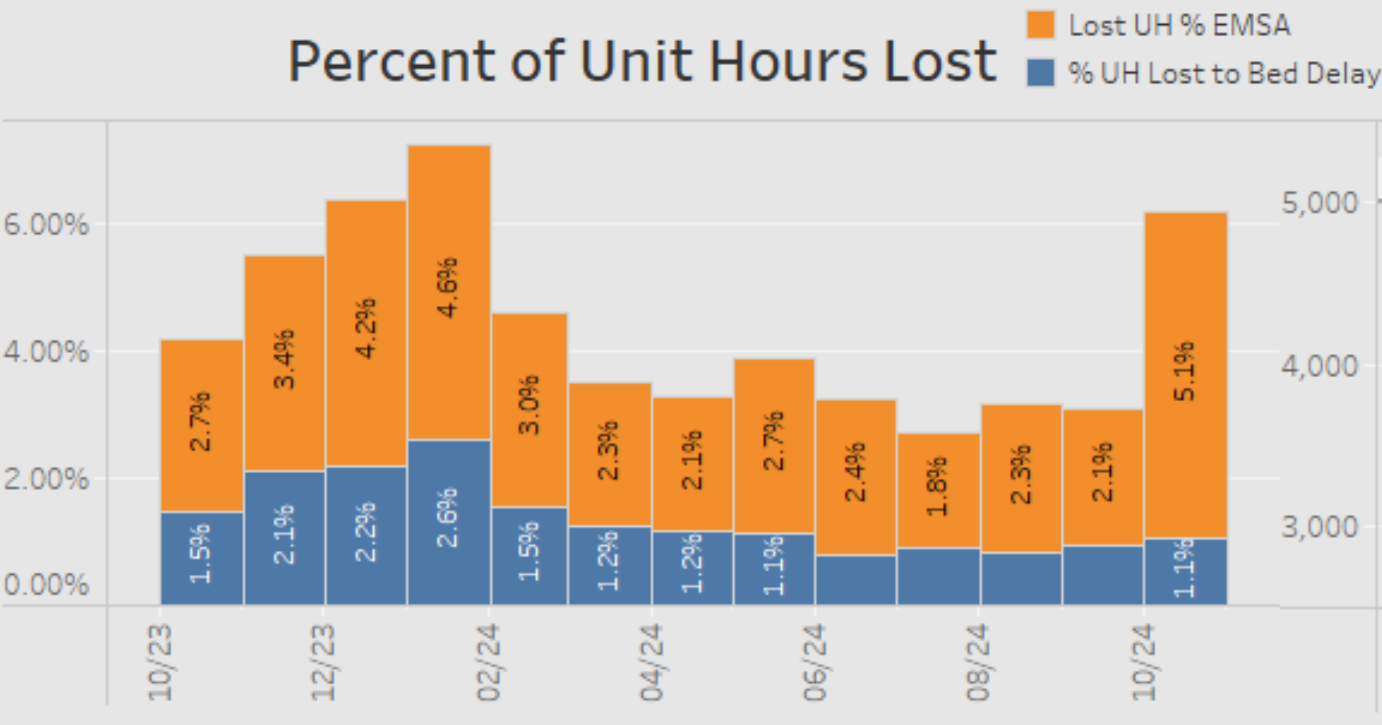


EMSA Western Division transported over 7,700 patients in the month of October, a 1% decrease from the previous month. Bed delay accounted for 1.5% of total unit hours produced, or 9.29 hours/day. EMSA Western Division was able to produce 73% of its unit hour goal for the month of October.

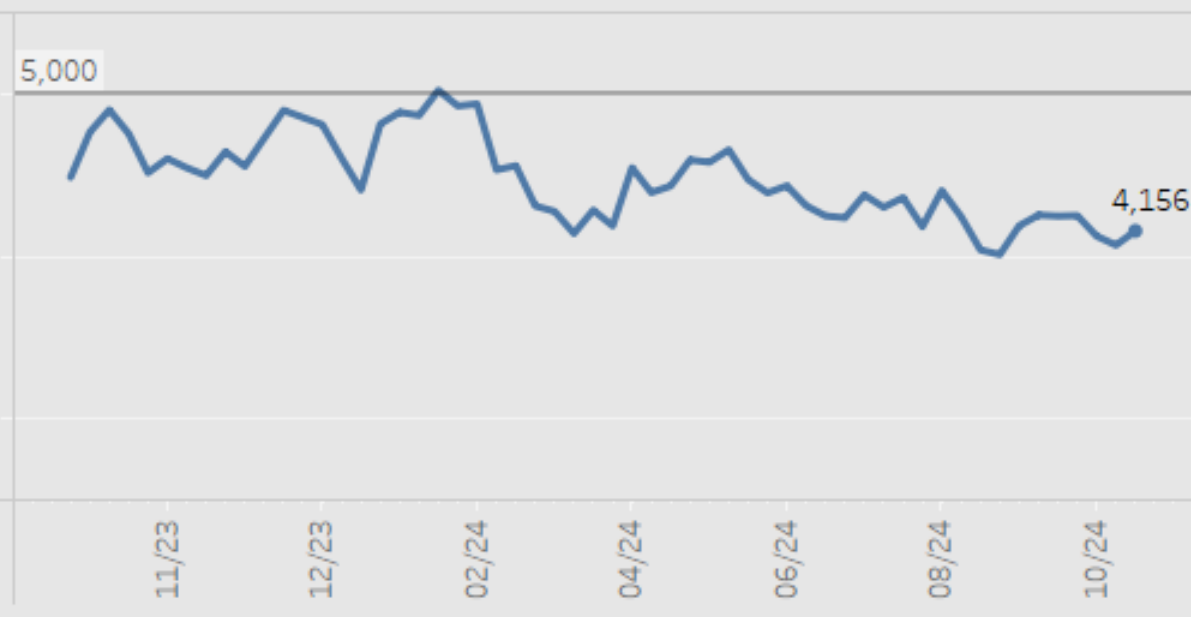
Responses and Transports



Percent of Unit Hours Lost



Unit Hours Produced

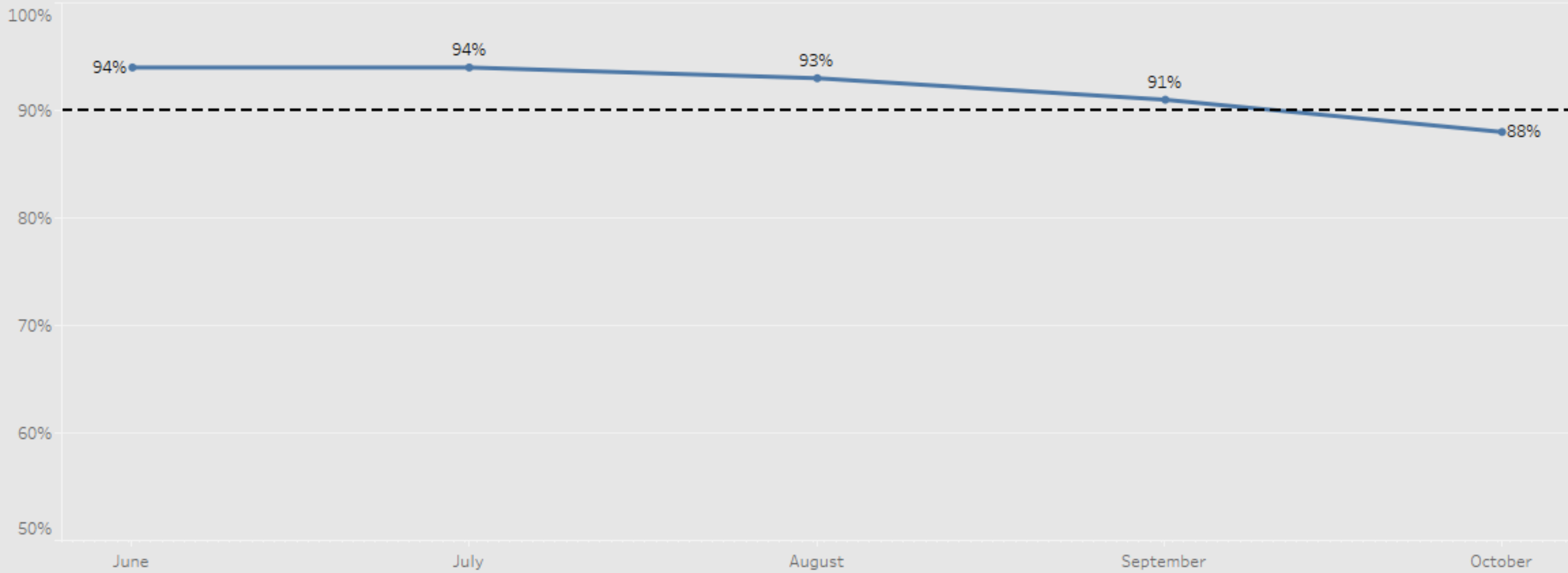


The compliance standard is 90%, as set by the EMS Ordinance

Priority One Response Time Compliance Western Division OKCFD

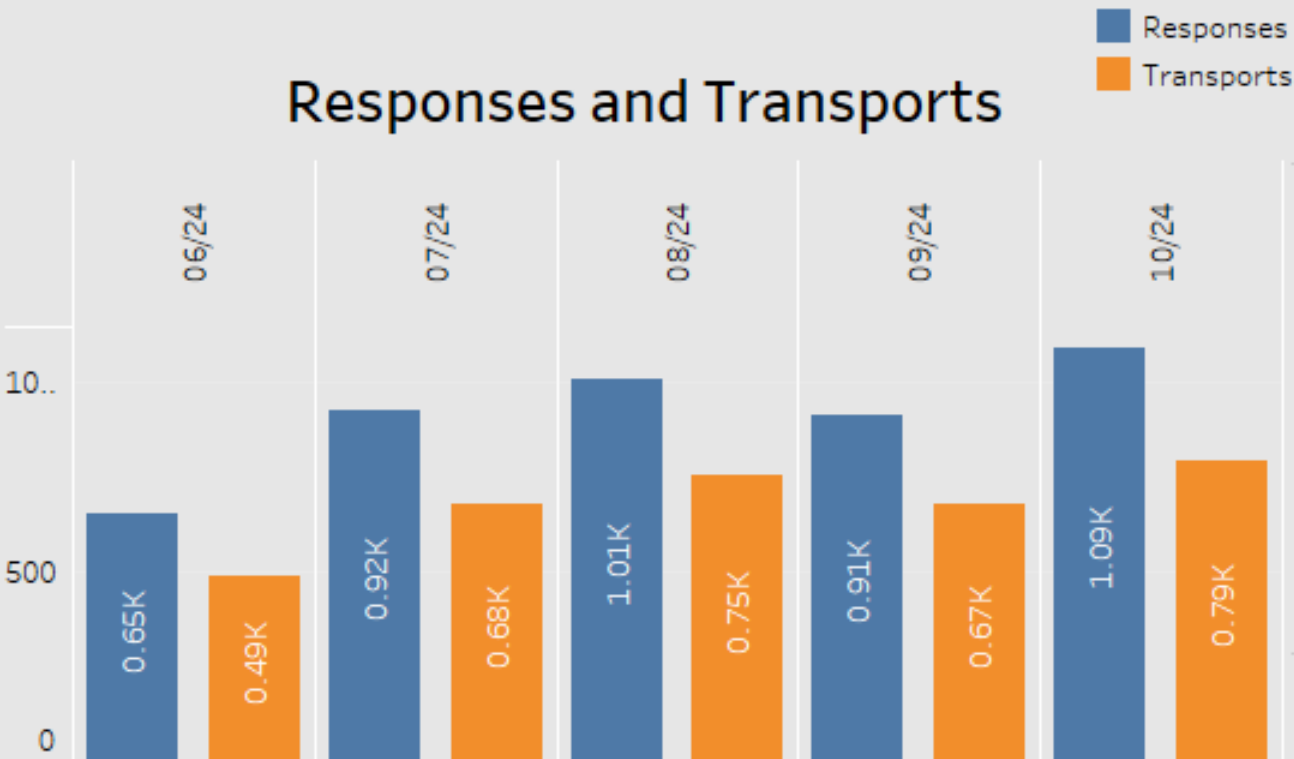
October 2024

88%

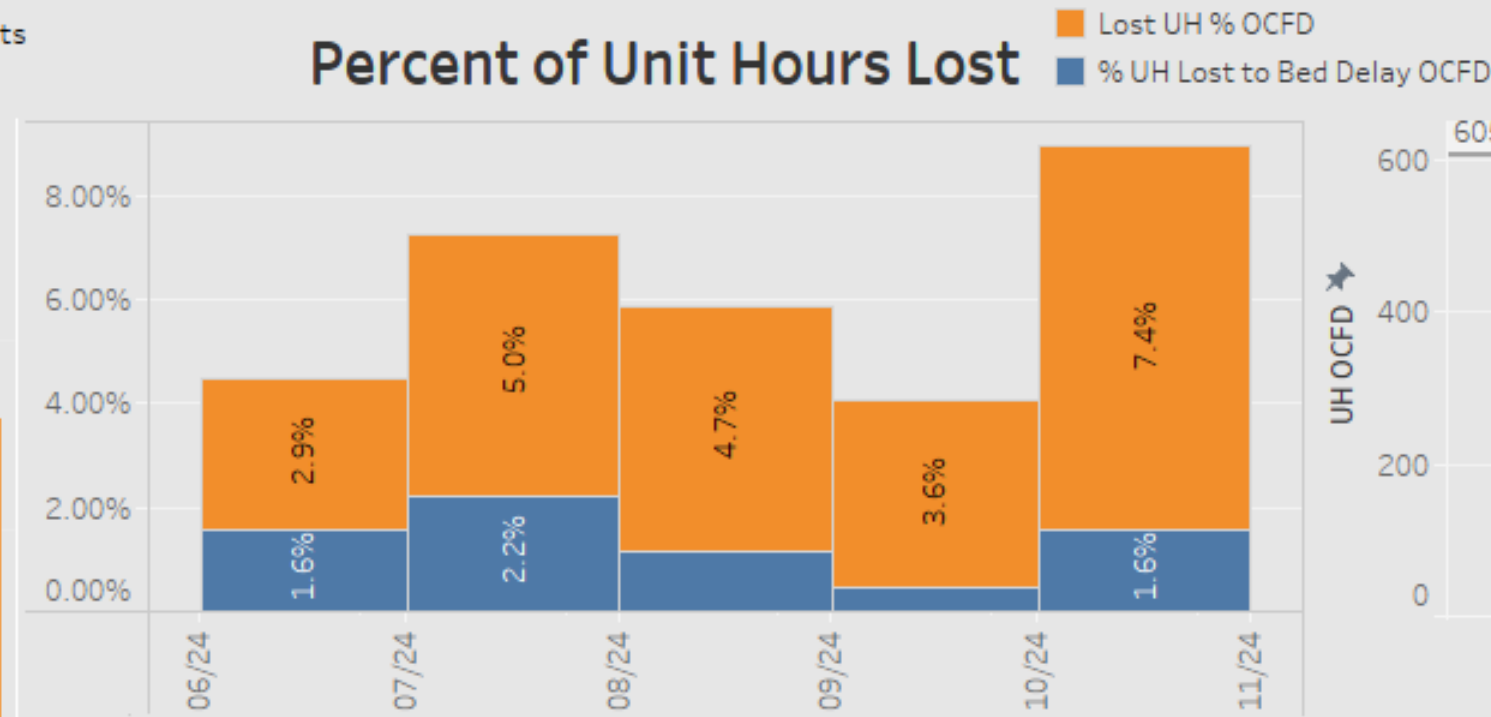


The Oklahoma City Fire Department transported a total of 789 patients for the month of October and achieved 88% Priority 1 response time compliance. The Oklahoma City Fire Department produced 66% of its contractual obligation of 605 unit hours.

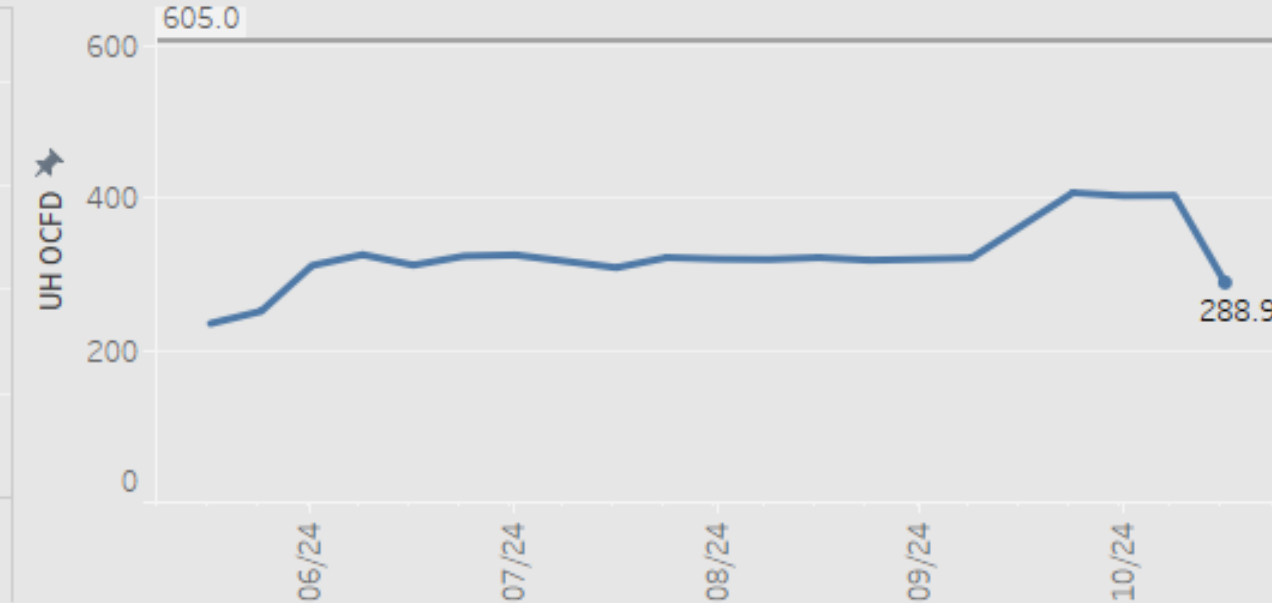
Responses and Transports



Percent of Unit Hours Lost



Unit Hours Produced



The compliance standard is 90%, as set by the EMS Ordinance

		October 2024 Compliance			
Division	Service Area	1	2	Priority 3	4
Eastern Division	Beneficiary	91%	93%	90%	100%
	Non-Beneficiary	N/A	76%	100%	100%
Western Division	Beneficiary	89%	97%	87%	92%
	Non-Beneficiary	94%	100%	100%	N/A