

# Chief Medical Officer Report EMSA Board of Trustees

## October 2024

Jeffrey M. Goodloe, MD, NRP, FACEP, FAEMS



# OMD Activities

- Entire OMD Team
  - 2025 EMS Treatment Protocols
    - Video laryngoscopy
    - Triage using SALT methodology
    - Plan to expand whole blood to pediatrics
  - Orientation Academies
  - Hiring completed for Asst CMO – MIH Programs
    - Dr. Patrick Cody
  - EMS Journal Club – led by OMD Biostatistician
  - Influenza Vaccination Authorization



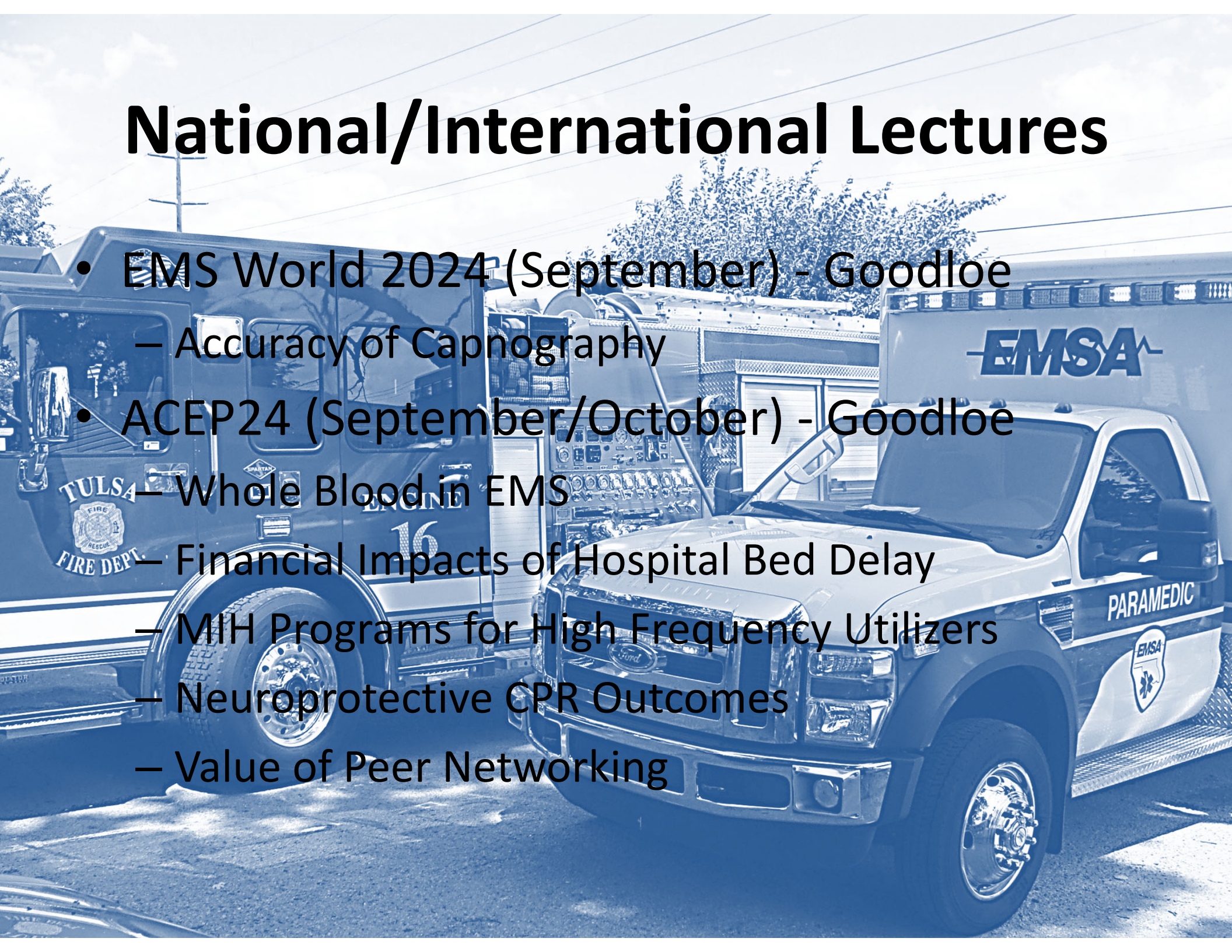
# MIH Programs

- Mobile integrated health planning with OKCFD, TFD, and EMSA
  - High frequency/volume utilizer
  - Mental health collaboratives
  - Opioid use disorder programs
    - After incident visits, naloxone kits, buprenorphine, “hand offs” to community partner agencies for longer term substance counseling care



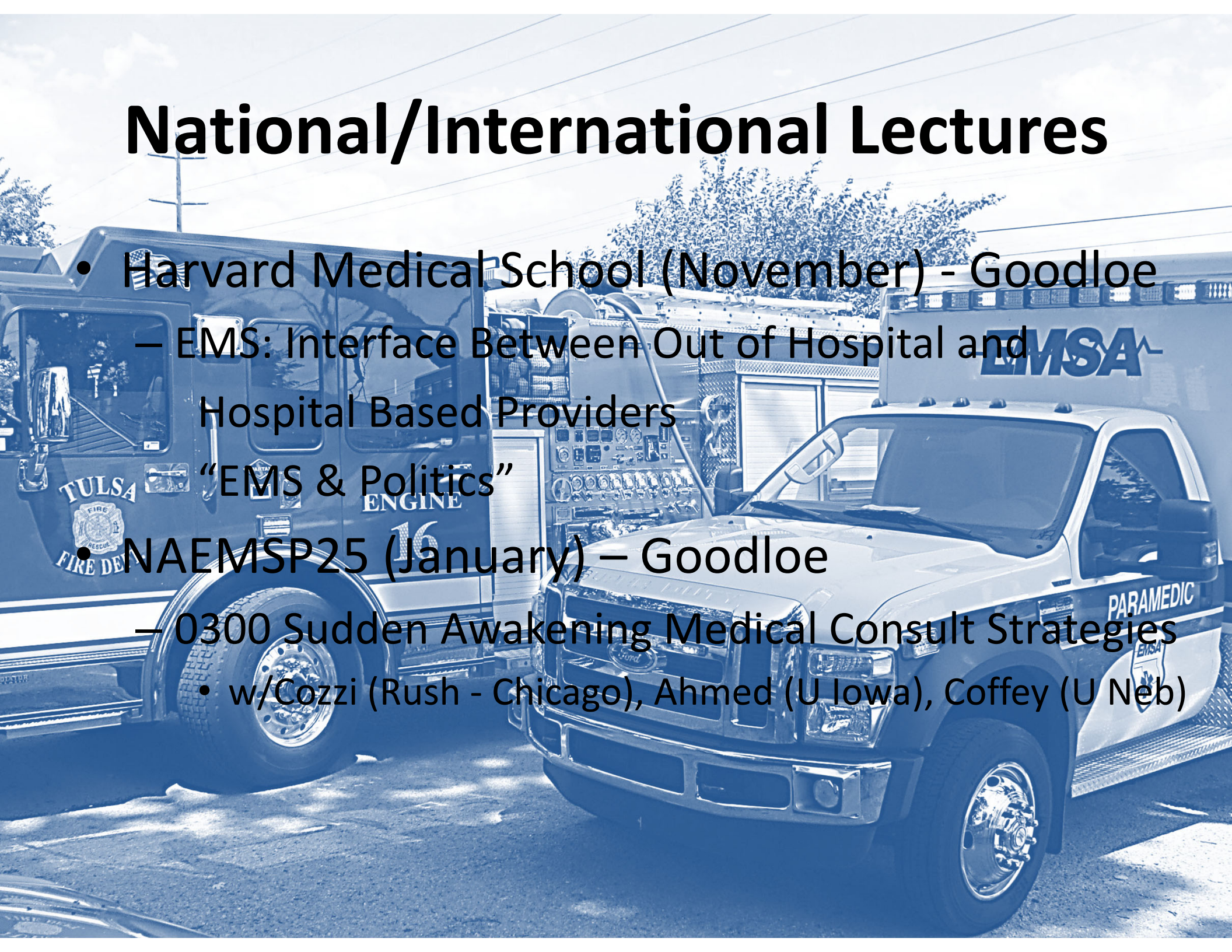
# National/International Lectures

- EMS World 2024 (September) - Goodloe
  - Accuracy of Capnography
- ACEP24 (September/October) - Goodloe
  - Whole Blood in EMS
  - Financial Impacts of Hospital Bed Delay
  - MIH Programs for High Frequency Utilizers
  - Neuroprotective CPR Outcomes
  - Value of Peer Networking



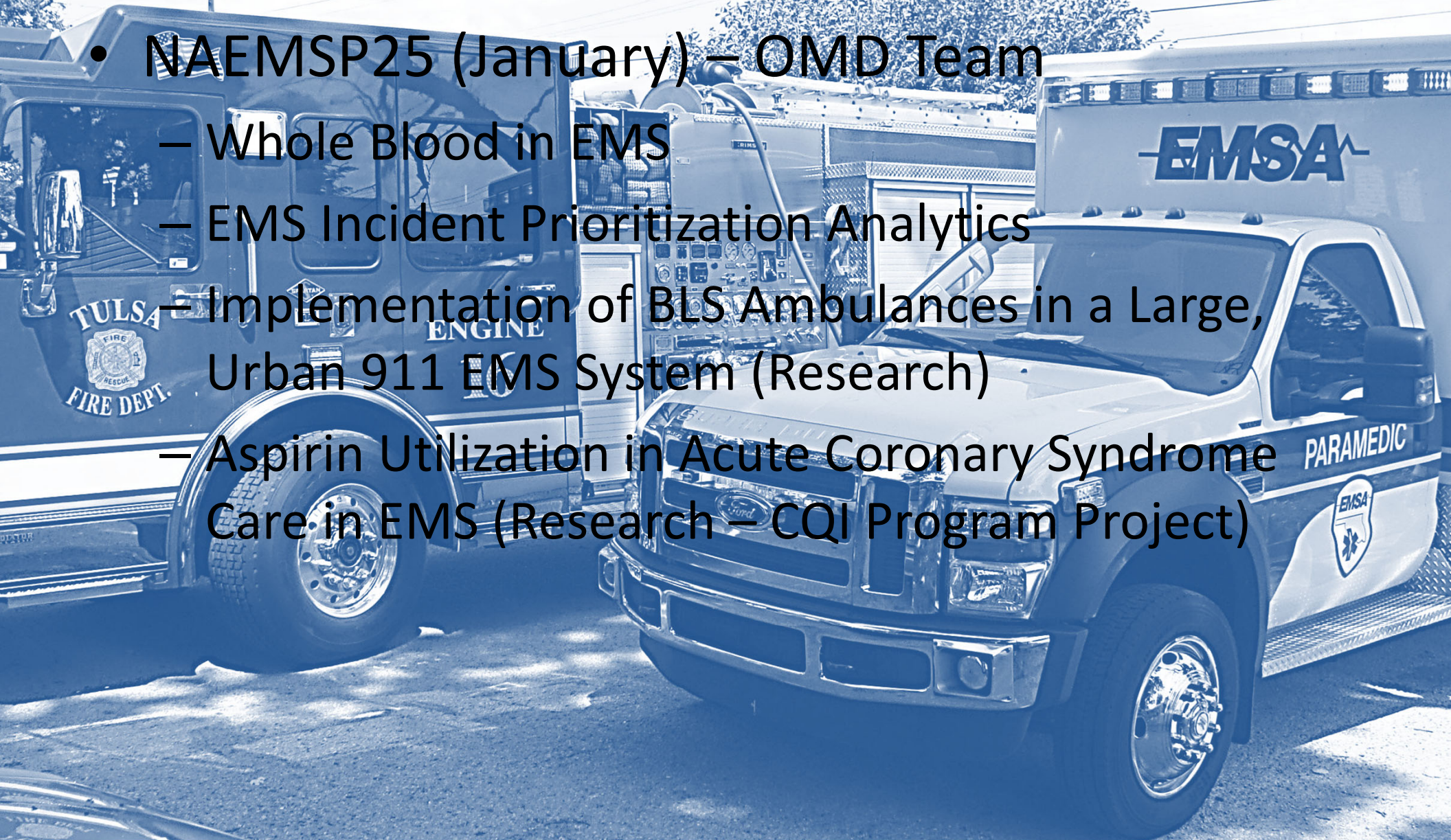
# National/International Lectures

- Harvard Medical School (November) - Goodloe
  - EMS: Interface Between Out of Hospital and Hospital Based Providers
  - “EMS & Politics”
- NAEMSP25 (January) – Goodloe
  - 0300 Sudden Awakening Medical Consult Strategies
    - w/Cozzi (Rush - Chicago), Ahmed (U Iowa), Coffey (U Neb)



# National/International Lectures & Research Presentations

- NAEMSP25 (January) – OMD Team
  - Whole Blood in EMS
  - EMS Incident Prioritization Analytics
  - Implementation of BLS Ambulances in a Large, Urban 911 EMS System (Research)
  - Aspirin Utilization in Acute Coronary Syndrome Care in EMS (Research – CQI Program Project)

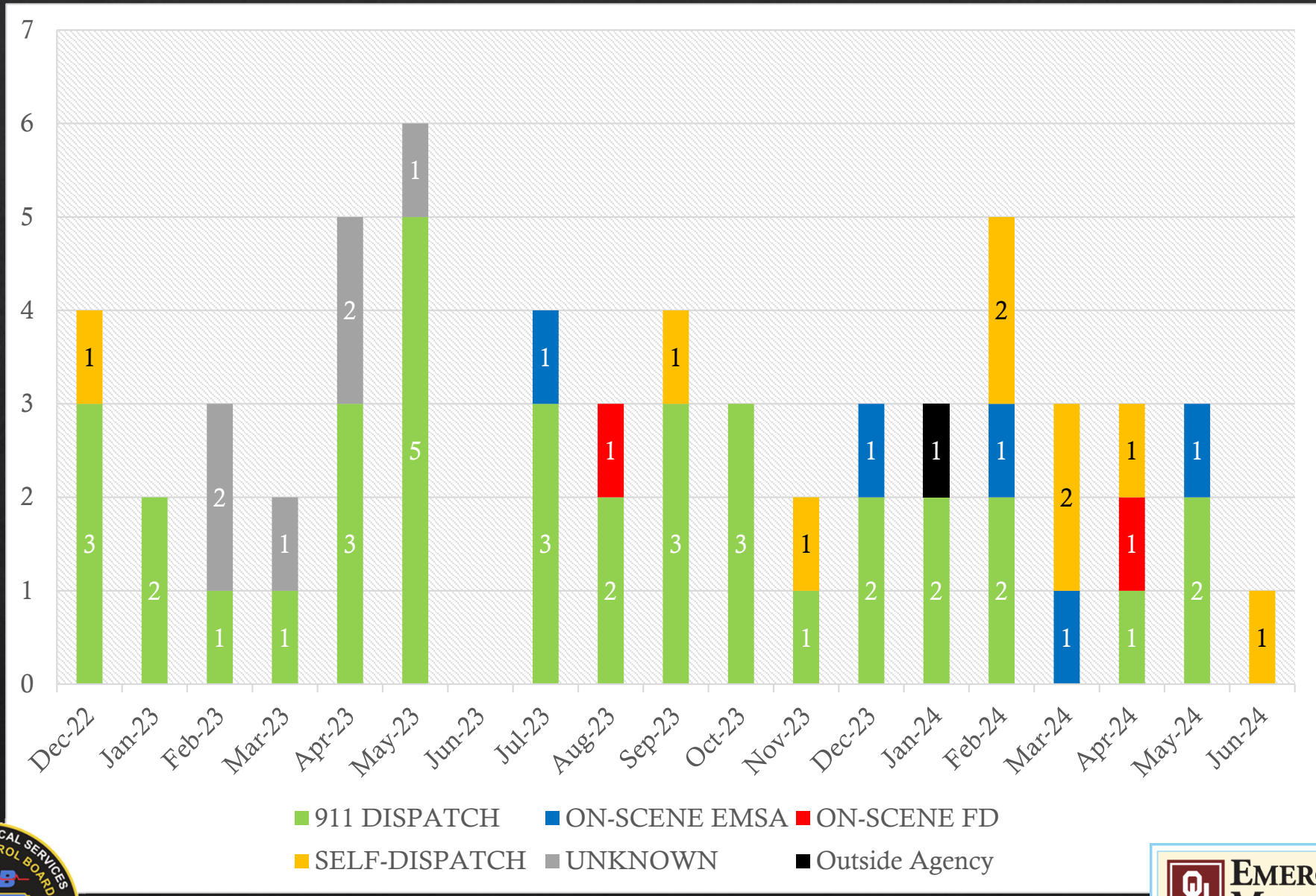


# Whole Blood Administrations

- 88 patients (11/30/22 – 10/11/24)
  - 65 (74%) penetrating trauma (GSW, stabbing)
    - Survival rate 47/63 known outcomes (75%)
  - 22 (25%) blunt trauma (MVC)
    - Survival rate 12/21 known outcomes (57%)
  - 1 (1%) medical



# Coordination of WB Response



■ 911 DISPATCH   
 ■ ON-SCENE EMSA   
 ■ ON-SCENE FD  
■ SELF-DISPATCH   
 ■ UNKNOWN   
 ■ Outside Agency





# Online Medical Consult Override



# 911 BLS Program

## June 2024 - July 2024

- Eastern Division/Metro Tulsa
- Eligible Calls (MCB MPDS Codes) = 2436
  - BLS Ambulance Responses = 1057 (43.4%)
- Overall Transports = 1718
  - Cancel/Refusal of Service 26.1%
- RLS Transports = 18 (0.7%)
- ALS Assists = 13 (0.5%)
- Unstable VS = 6 (0.2%)



# 911 BLS Program

## June 2024 - July 2024

- Western Division/Metro OKC
- Eligible Calls (MCB MPDS Codes) = 2017
  - BLS Ambulance Responses = 1200 (59.5%)
- Overall Transports = 1491
  - Cancel/Refusal of Service 25.4%
- RLS Transports = 12 (0.6%)
- ALS Assists = 19 (1.0%)
- Unstable VS = 27 (1.5%)



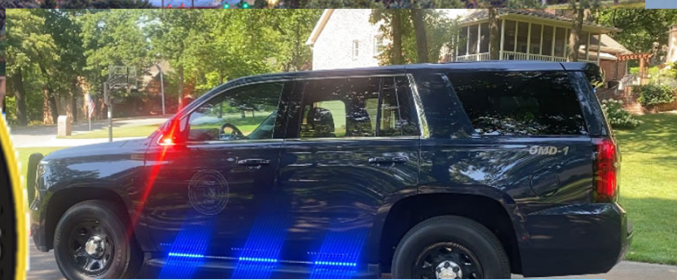
# 911 BLS Program

## Dec 2021 - July 2024

- Metro Oklahoma City & Tulsa Combined
- Eligible Calls (MCB MPDS Codes) = 67517
  - BLS Ambulance Responses = 21359 (31.6%)
- Overall Transports = 48224
  - Cancel/Refusal of Service 28.6%
- RLS Transports = 571 (0.85%)
- ALS Assists = 587 (0.87%)
- Unstable VS = 1741 (2.58%)



**TULSA**



 **EMERGENCY MEDICINE**  
UNIVERSITY OF OKLAHOMA

 **EMS SECTION**



**OKLAHOMA CITY**

Contact Info:  
[jeffrey-goodloe@ouhsc.edu](mailto:jeffrey-goodloe@ouhsc.edu)  
 Office of the Medical Director  
[www.okctulomd.com](http://www.okctulomd.com)  
 918-596-3147  
 @drjeffgoodloe