

Sonia Coleman

Director of Revenue Cycle Management

Revenue Cycle KPIs

April 2024

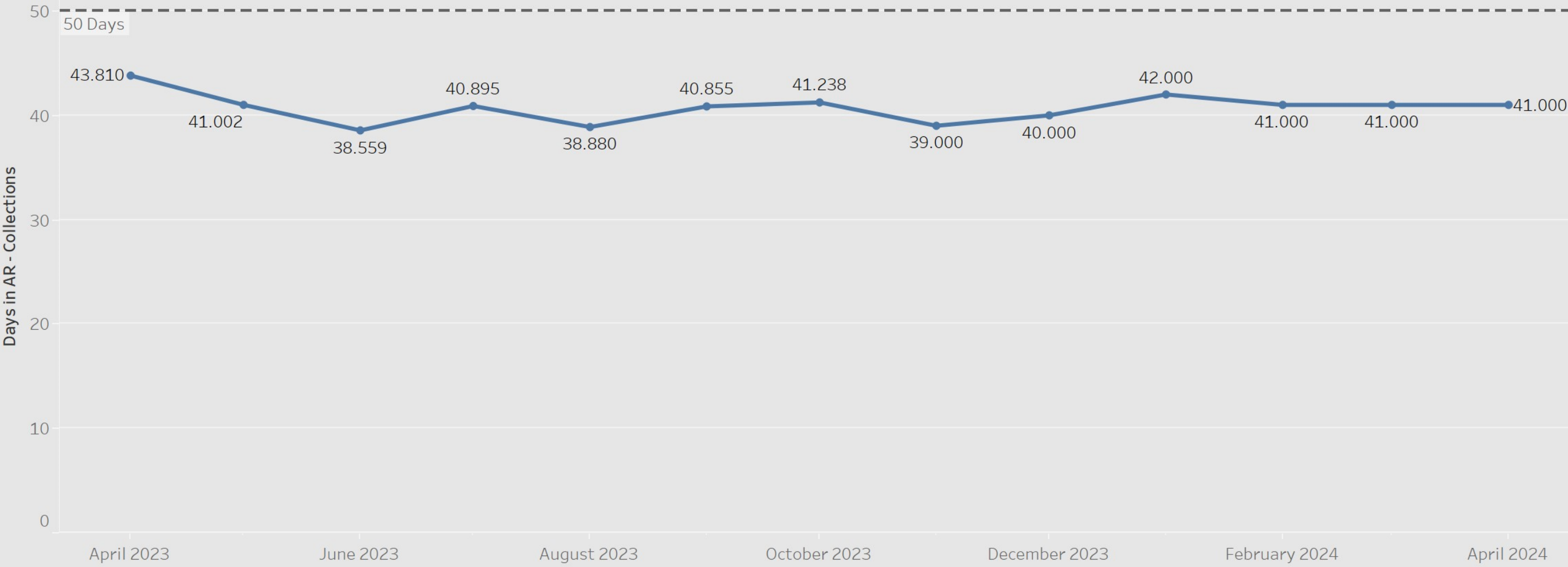


Days in AR

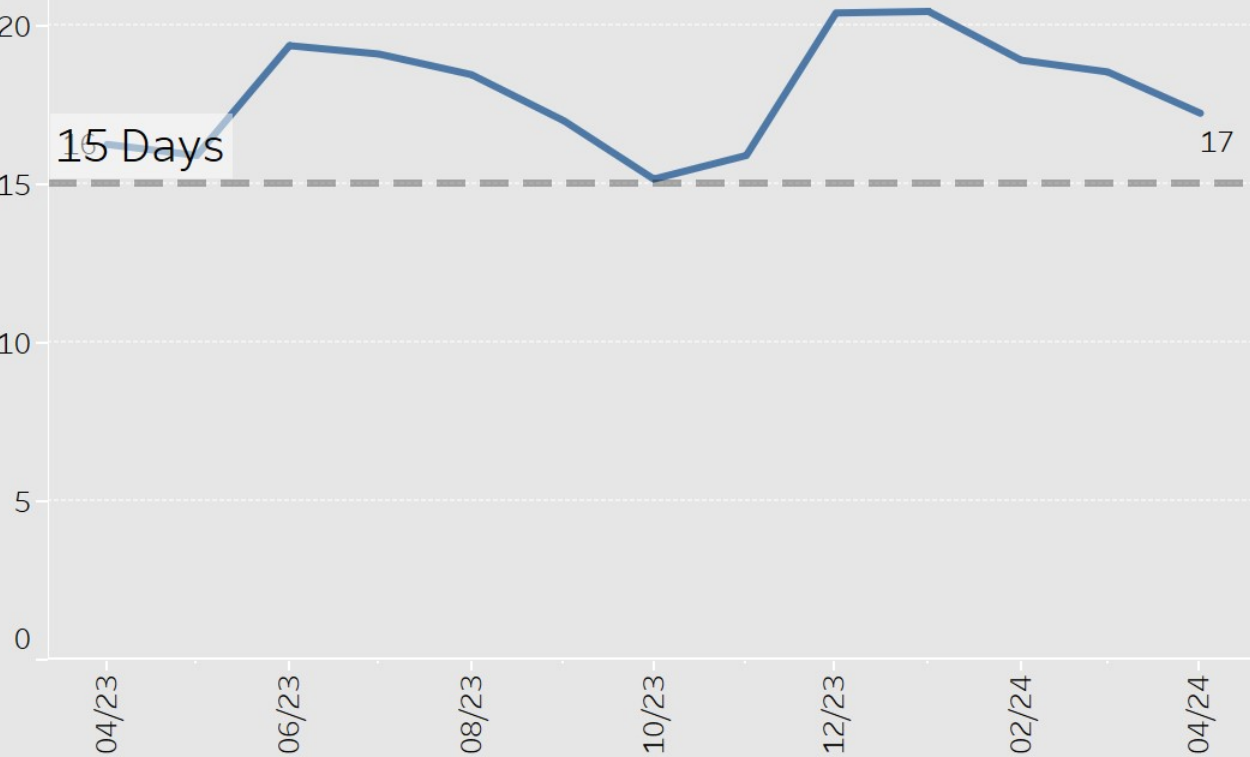
April 2024



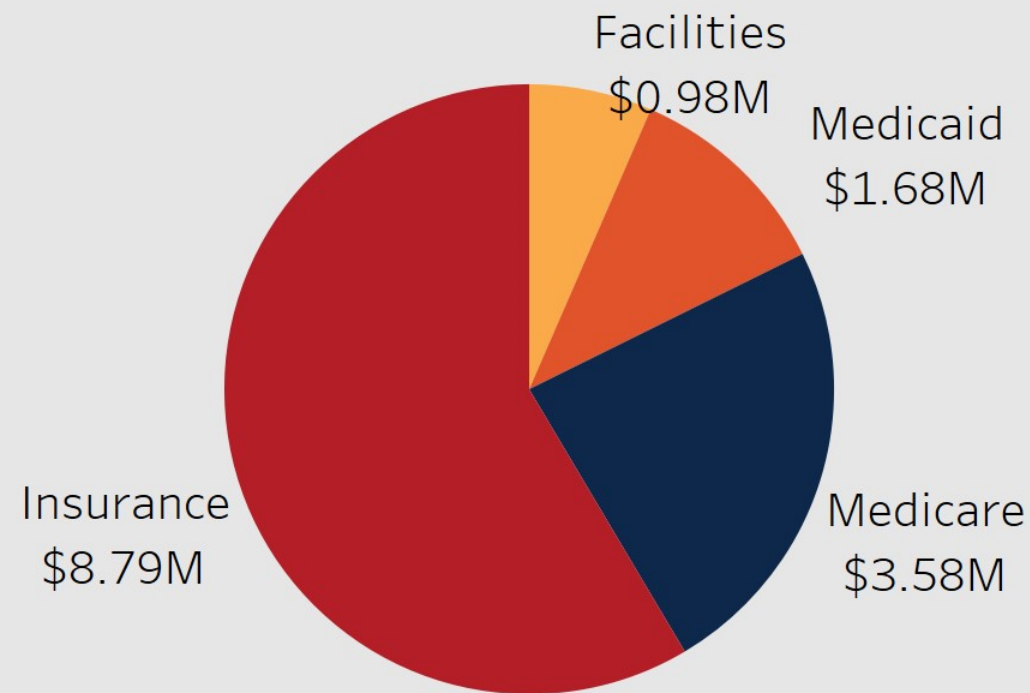
Days in AR within target, even with slightly increased Aging over 90 days also due to recent delays in claims processing. Aging over 180 days is lower compared to previous month.



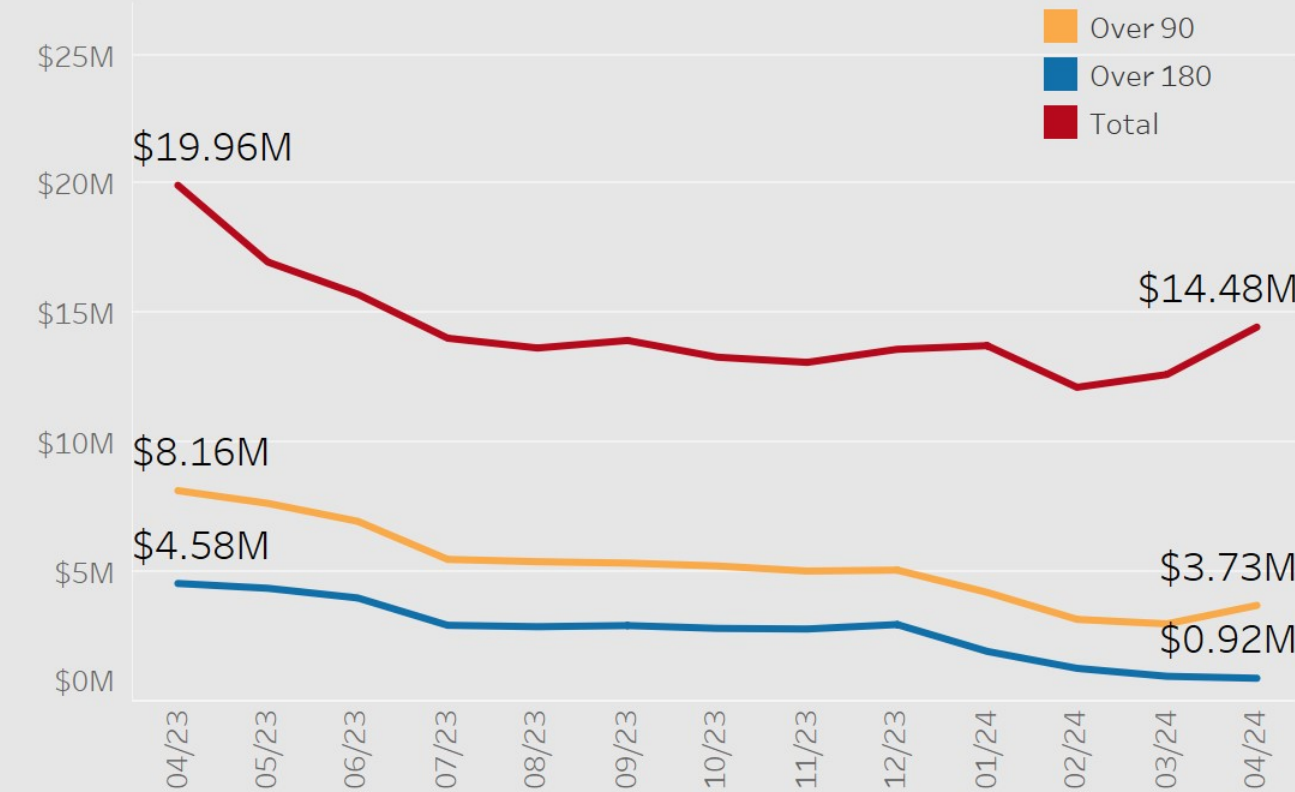
Days to Bill



Outstanding AR by Payor



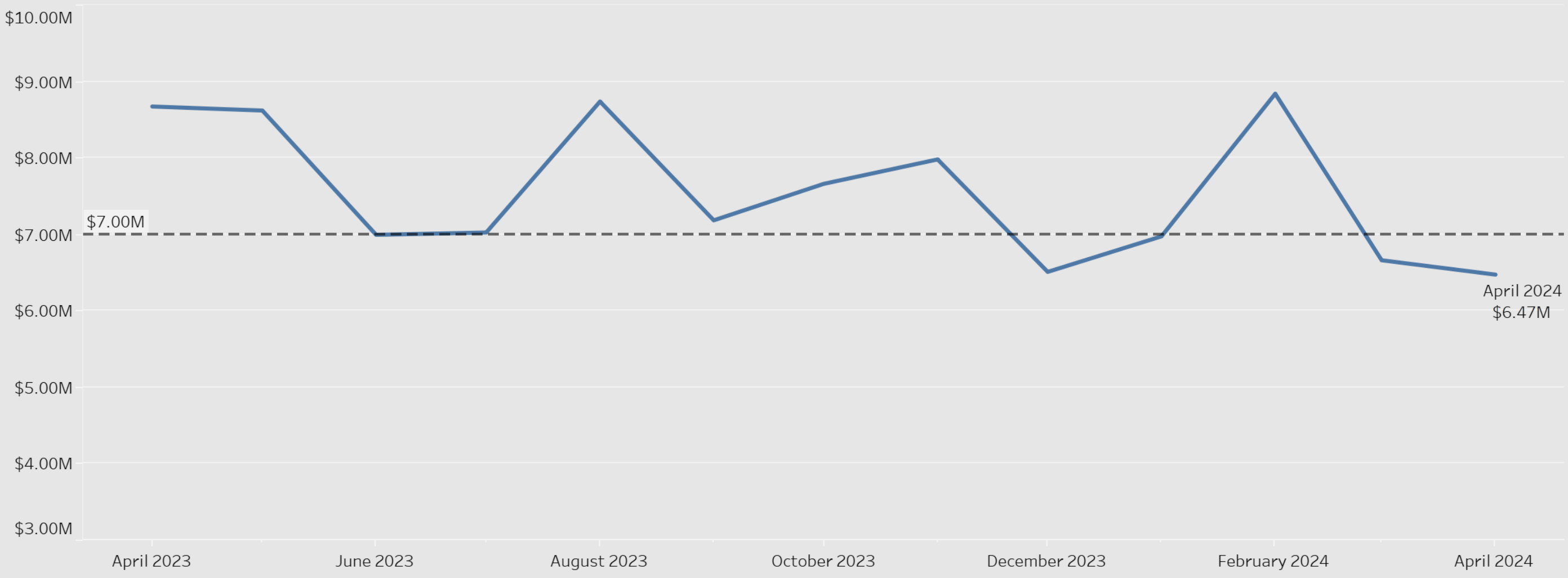
Aging All Payors less Self Pay



Cash Collections

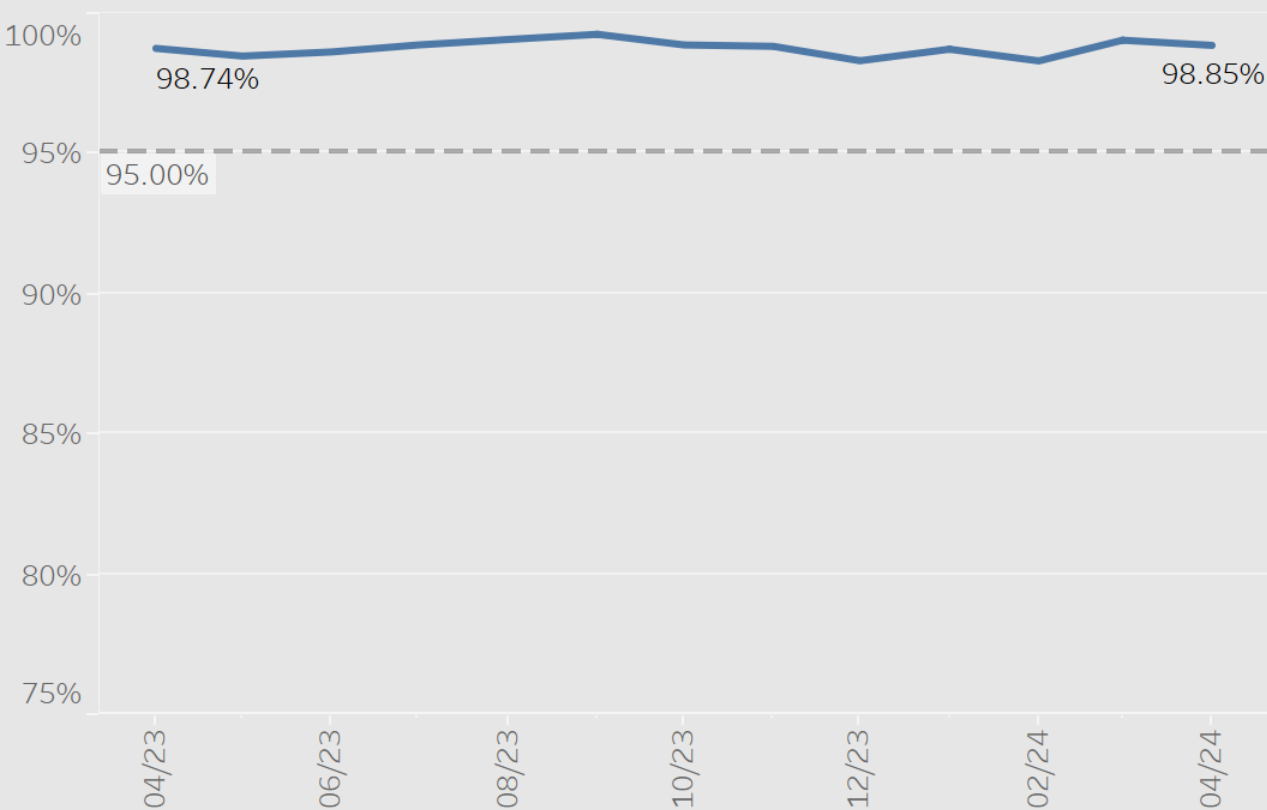
April 2024

\$6.47M

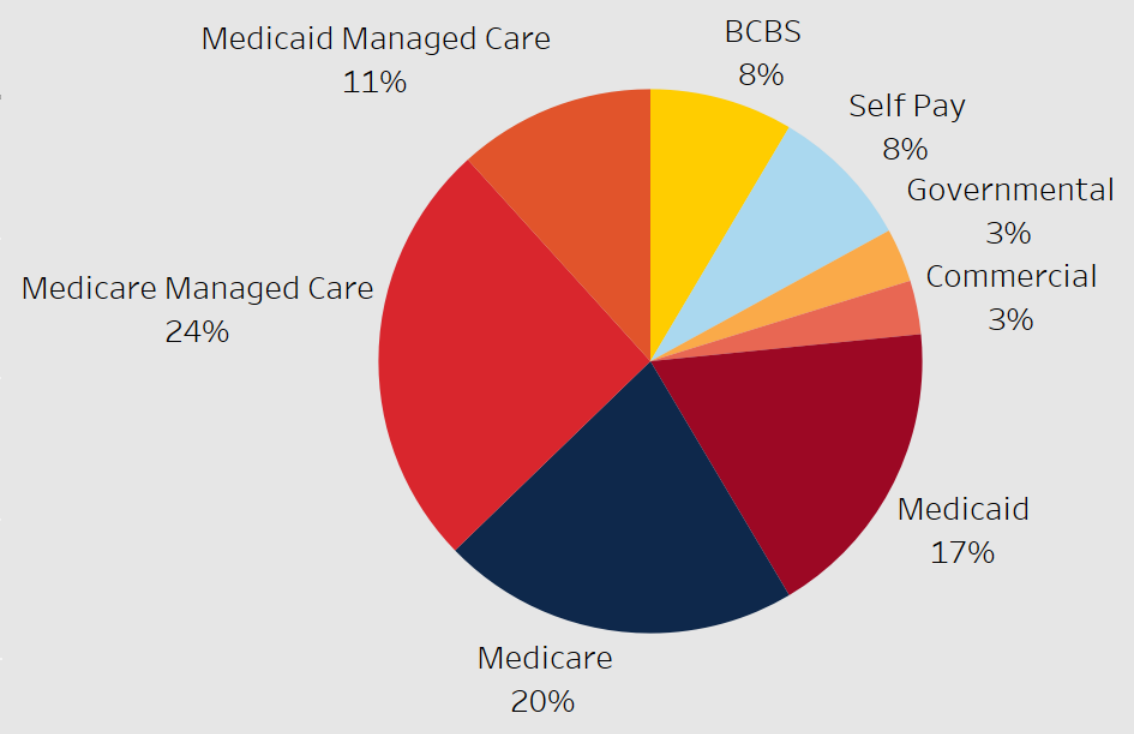


Cash Collections for April were lower than the target. Some delays in claims processing affected our cash collections. The percentage of clean claims remains above goal. Medicaid and Medicare Managed Care payors are now reflected in the payor mix.

Percent of Clean Claims



Payor Mix



Cost to Collect

