



BOARD PRESENTATION

2024

Presented for:

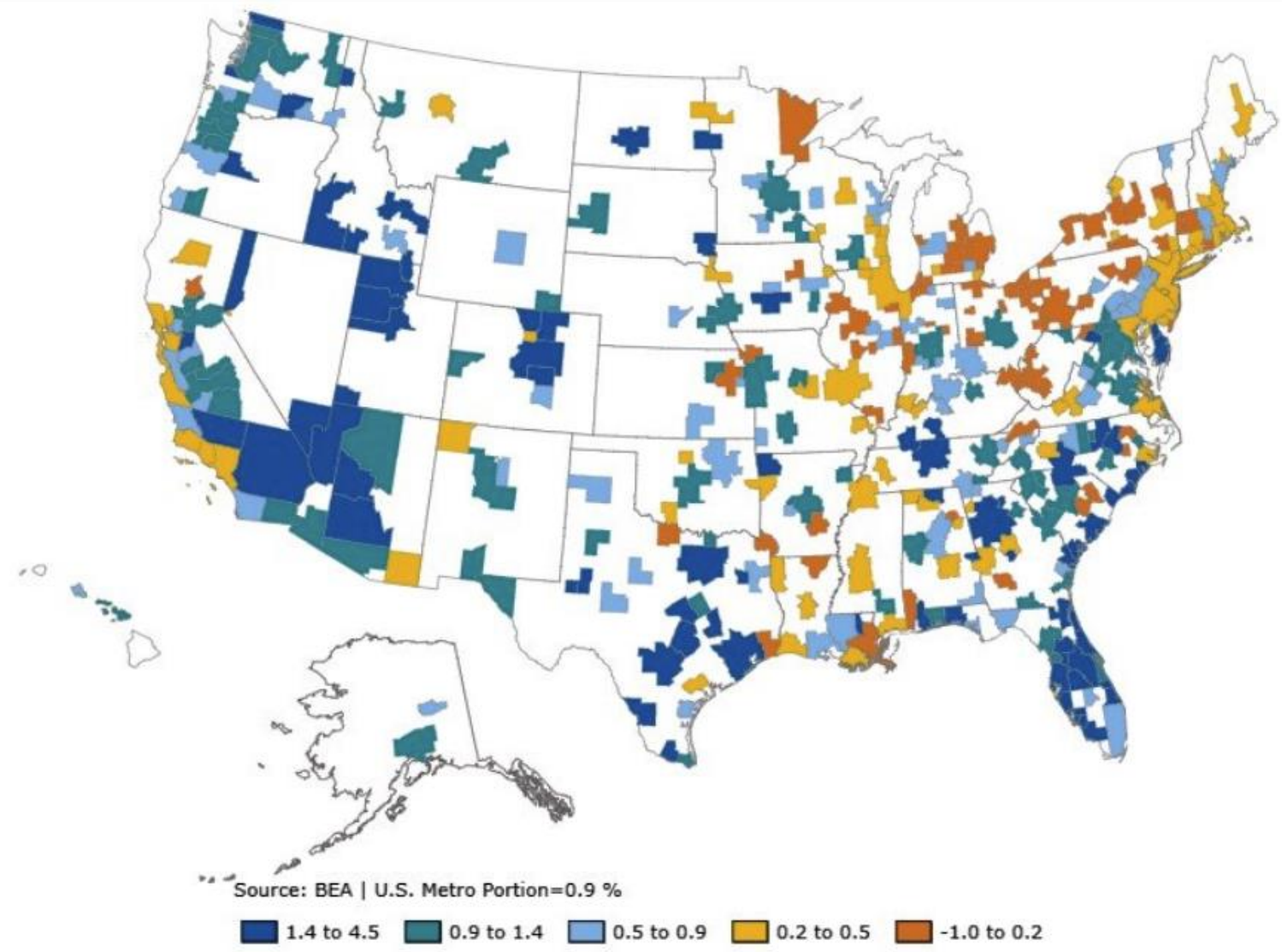
The Emergency Medical Services Authority of
Oklahoma



Presented by:

Dr. Russell Evans
Regional Economic Advisers

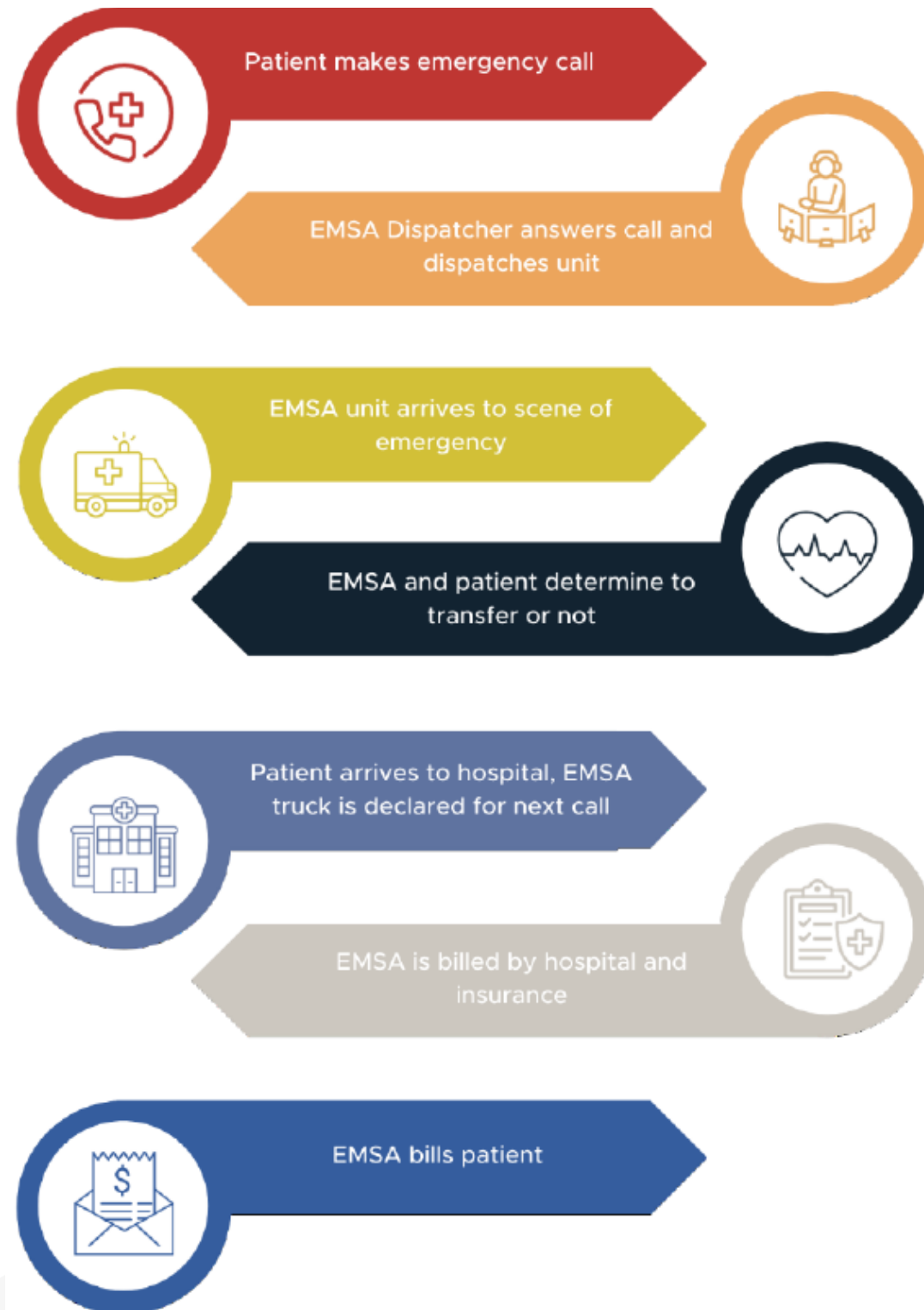
Economic Geography and the I-35 Corridor



KEY TAKEAWAYS

- People and economic activity are increasingly mobile and generally moving south and west
- Patterns of urbanization in Oklahoma will continue to concentrate people and economic activity in EMSA served markets

First Line of Care



KEY TAKEAWAYS

- EMSA dispatchers are trained paramedics and the ‘first on the scene’ medical professional
- EMSA crews work with first responders to provide critical pre-hospital care and emergency transportation

Transfer Transportation



KEY TAKEAWAYS

- EMSA crews provide both emergency and institutional patient transfer transportation
- EMSAcare enrollees face no out-of-pocket expenses for emergency transfer services

Workforce Training



EMSA Graduate Earnings Comparison			
Occupation Title	Median Earnings Worker Age 25-34*	EMT Premium	Paramedic Premium
EMSA			
Emergency Medical Technicians	\$36,460	-	-
Paramedics	\$50,190	-	-
Highest Job Openings, 2022 - 2032			
Home Health and Personal Care Aides	\$24,595	\$11,865	\$25,595
Stockers and Order Fillers	\$27,620	\$8,840	\$22,570
Customer Service Representatives	\$31,300	\$5,160	\$18,890
Office Clerks, General	\$30,790	\$5,670	\$19,400
Secretaries and Administrative Assistants, Except Legal, Medical, and Executive	\$32,490	\$3,970	\$17,700
First-Line Supervisors of Food Preparation and Serving Workers	\$27,360	\$9,100	\$22,830
Maintenance and Repair Workers, General	\$41,630	-\$5,170	\$8,560

KEY TAKEAWAYS

- EMSA Advantage, a free training program for aspiring healthcare professionals, trains EMTs and paramedics who often continue on in a healthcare field
- The lifetime earnings of EMTs and paramedics (\$1.7 Million to \$2.7 million) represent a significant premium to common occupations available to high school graduates

EMSA Impacts

EMSA Operations: Total Economic Impact			
Division	Employment	Income	Output
East	550	\$ 40,362,560	\$ 90,578,820
West	714	\$ 33,434,370	\$111,550,592
Total	1,264	\$ 73,796,930	\$ 202,129,412

