

EMSA



“To serve our communities’ pre-hospital needs through value-driven, compassionate, and clinically superior care.”

Revenue Cycle Update October 2023

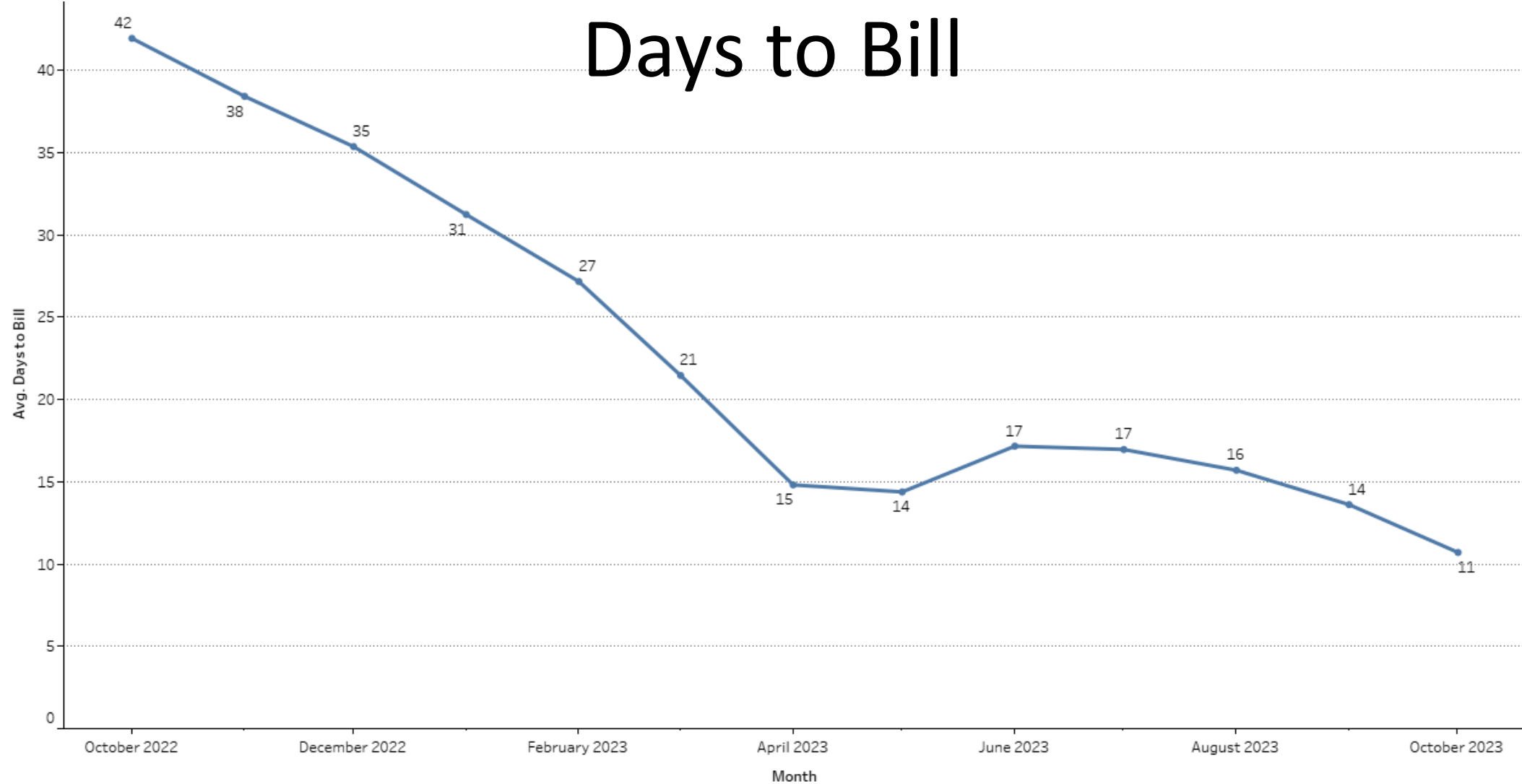
Sonia Coleman

Director of Revenue Cycle Management



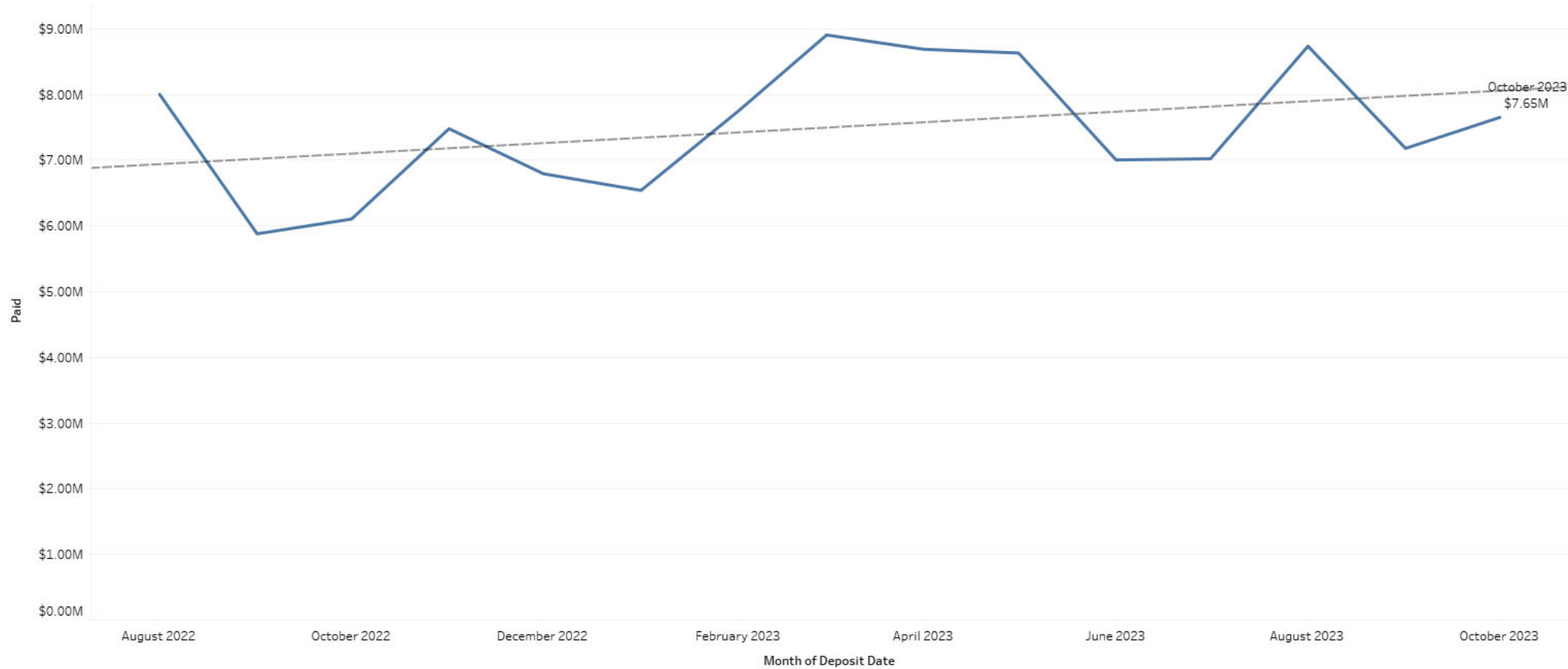
“To serve our communities’ pre-hospital needs through value-driven, compassionate, and clinically superior care.”

Days to Bill



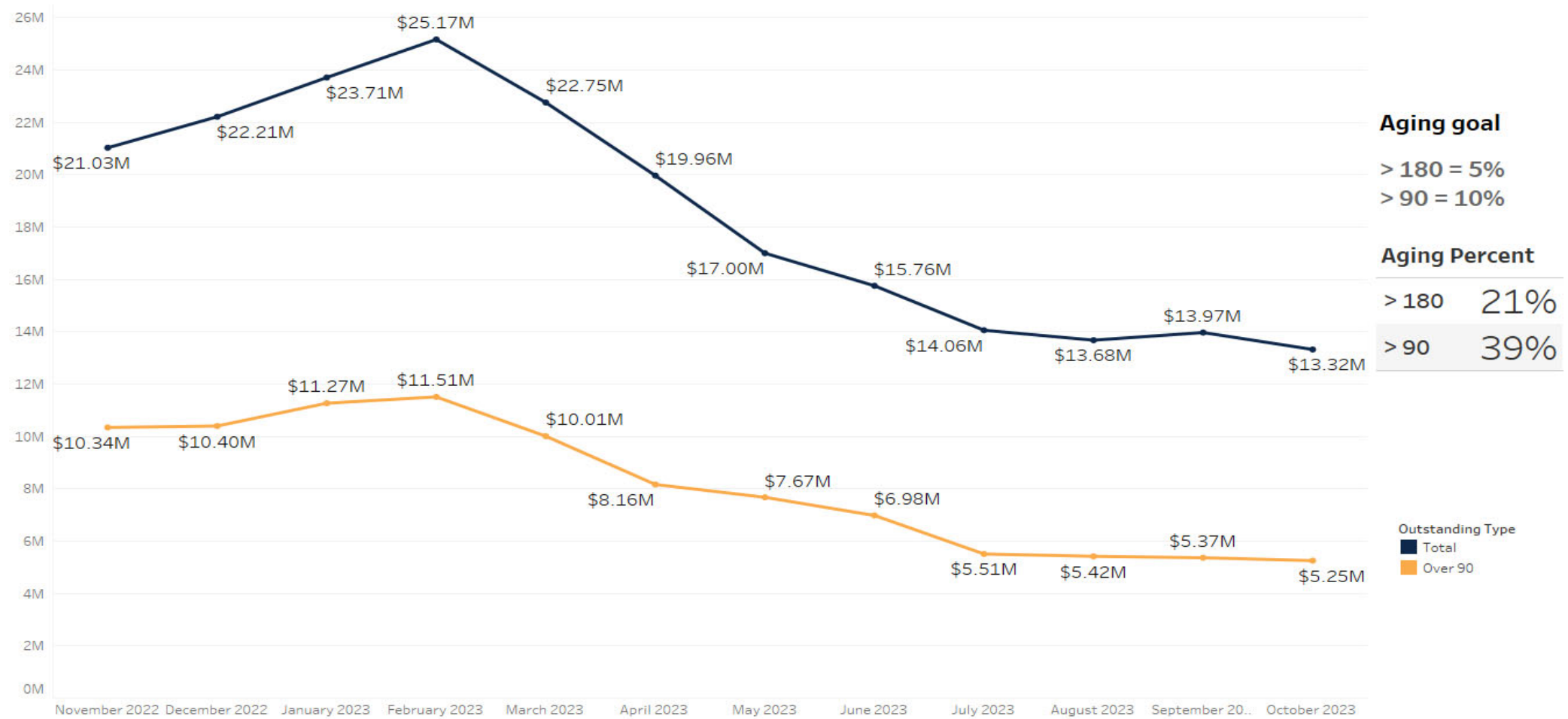
to serve our communities pre-hospital needs through value-driven, compassionate, and clinically superior care.”

Cash Received



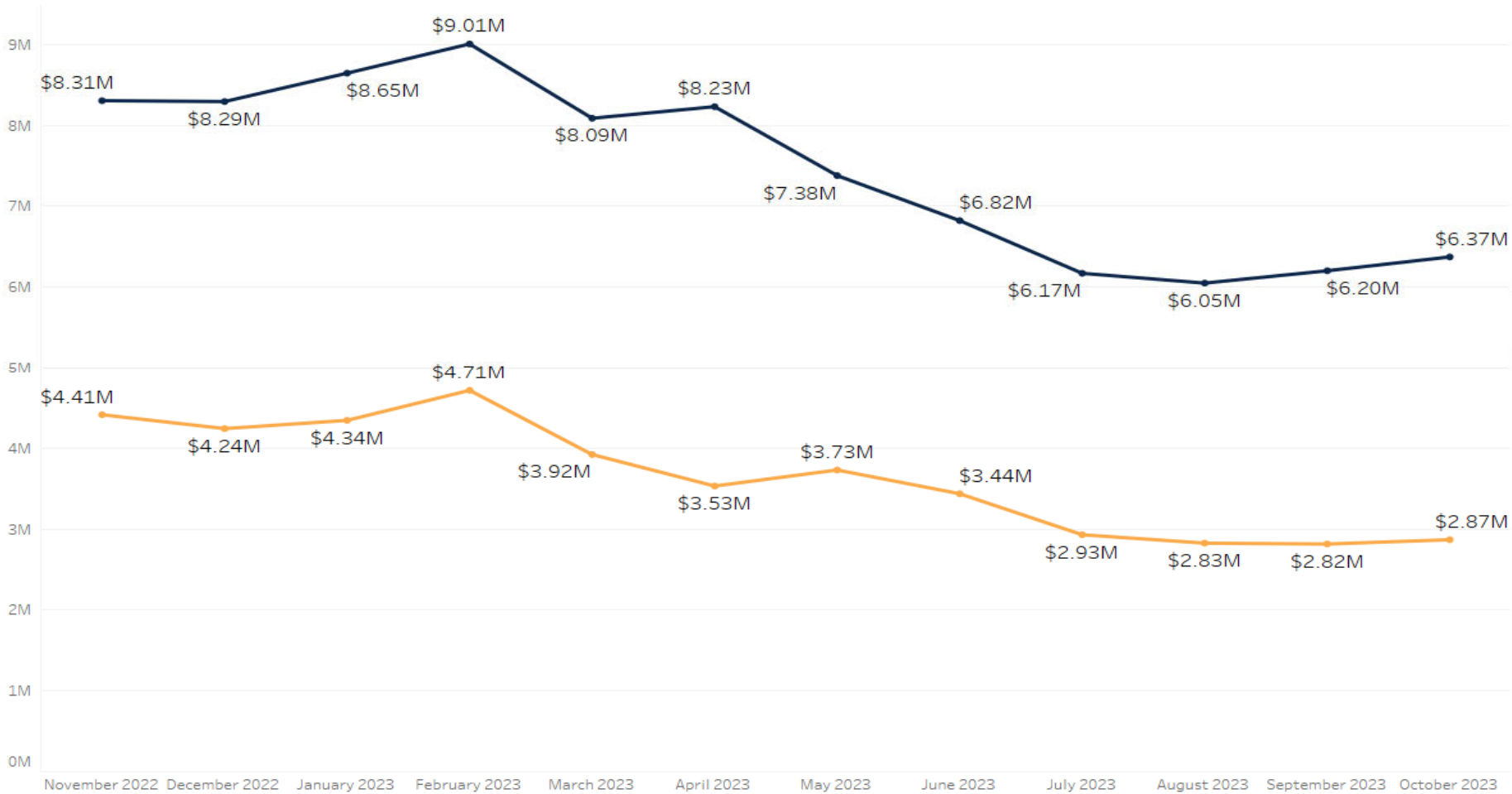
“To serve our communities’ pre-hospital needs through value-driven, compassionate, and clinically superior care.”

Aging All Payors Less Self Pay



“To serve our communities’ pre-hospital needs through value-driven, compassionate, and clinically superior care.”

Aging Commercial Payors



Aging goal

> 180 = 5%
> 90 = 10%

Aging Percent

> 180 25%
> 90 45%

Measure Names
■ Total
■ Over 90



“To serve our communities’ pre-hospital needs through value-driven, compassionate, and clinically superior care.”

Aging Medicare



Aging goal

> 180 = 5%
> 90 = 10%

Aging Percent

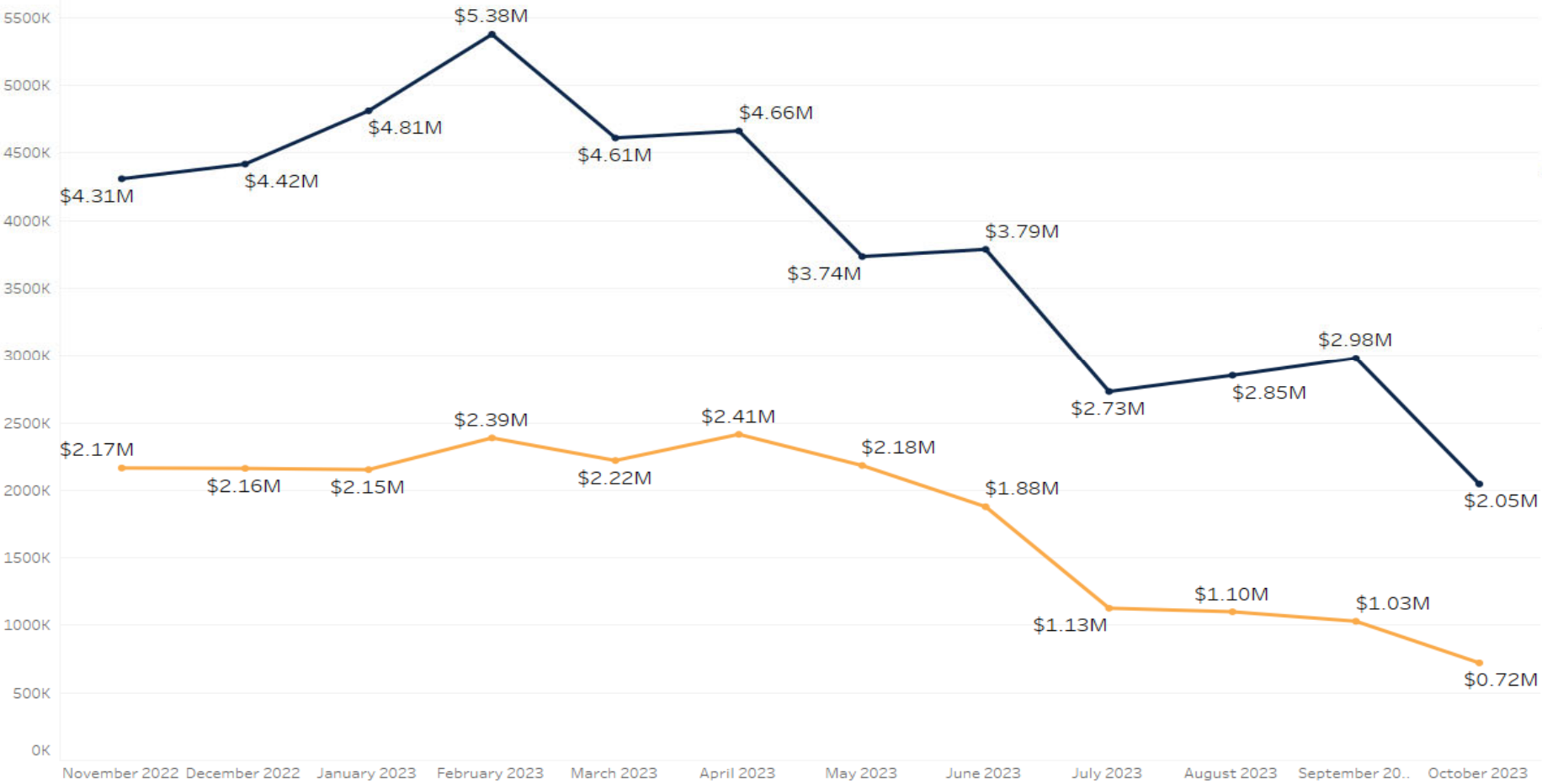
> 90 6%
> 180 -2%

Measure Names
■ Total
■ Over 90



“To serve our communities’ pre-hospital needs through value-driven, compassionate, and clinically superior care.”

Aging Medicaid



Aging goal

> 180 = 5%
> 90 = 10%

Aging Percent

> 90 35%
> 180 12%

Measure Names
■ Total
■ Over 90



“To serve our communities’ pre-hospital needs through value-driven, compassionate, and clinically superior care.”

EMSA



“To serve our communities’ pre-hospital needs through value-driven, compassionate, and clinically superior care.”