

EMSA



“To serve our communities’ pre-hospital needs through value-driven, compassionate, and clinically superior care.”

Operational Compliance Report October 2023

Johna Easley
President & CEO



“To serve our communities’ pre-hospital needs through value-driven, compassionate, and clinically superior care.”

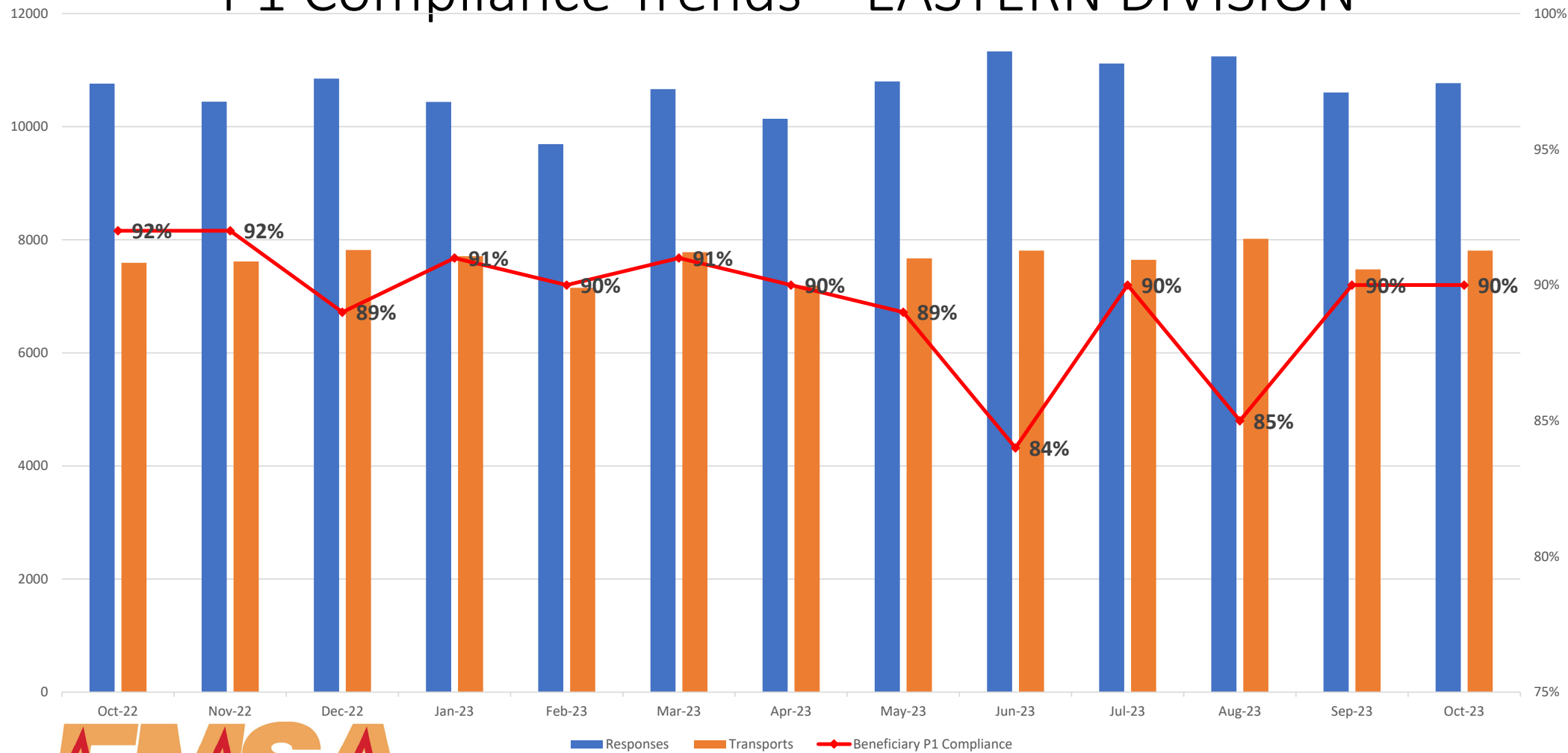
October 2023 Compliance Summary – Combined

	Priority 1	Priority 2	Priority 3	Priority 4
East Ben. Total	90%	93%	83%	100%
East NB Total	Priority 1&2	78%	100%	N/A
West Ben. Total	90%	97%	91%	100%
West NB Total	82%	96%	86%	100%



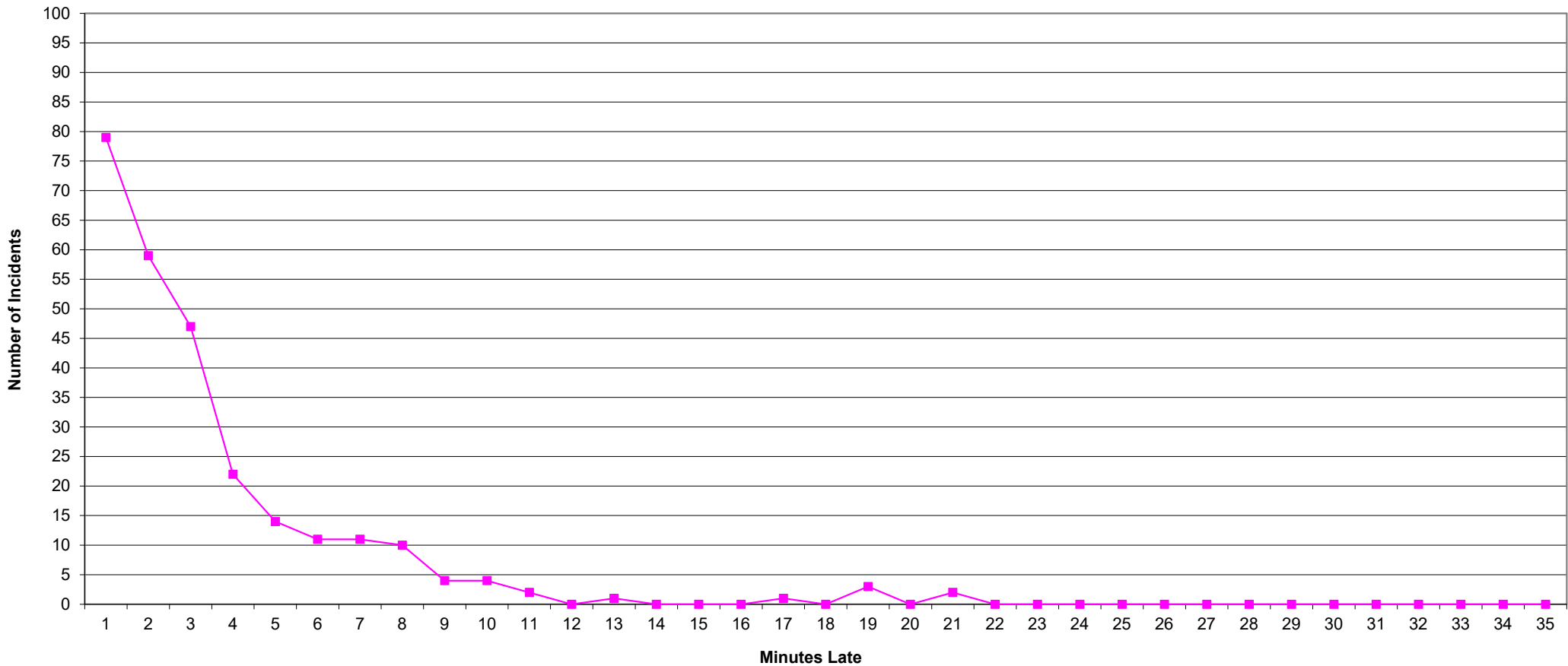
“To serve our communities’ pre-hospital needs through value-driven, compassionate, and clinically superior care.”

P1 Compliance Trends – EASTERN DIVISION



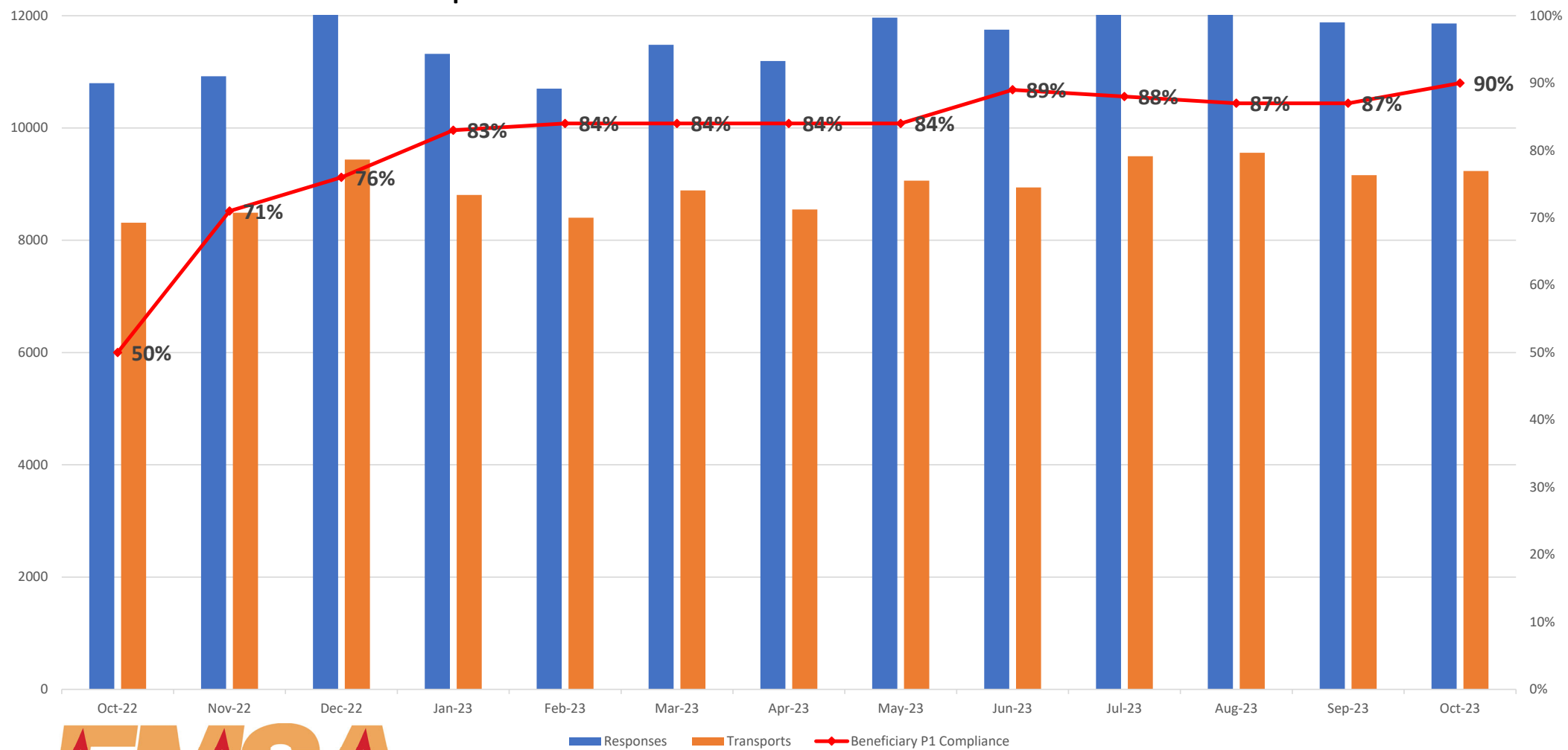
■ Responses ■ Transports ◆ Beneficiary P1 Compliance

Eastern Division Priority 1 Late Calls October 2023



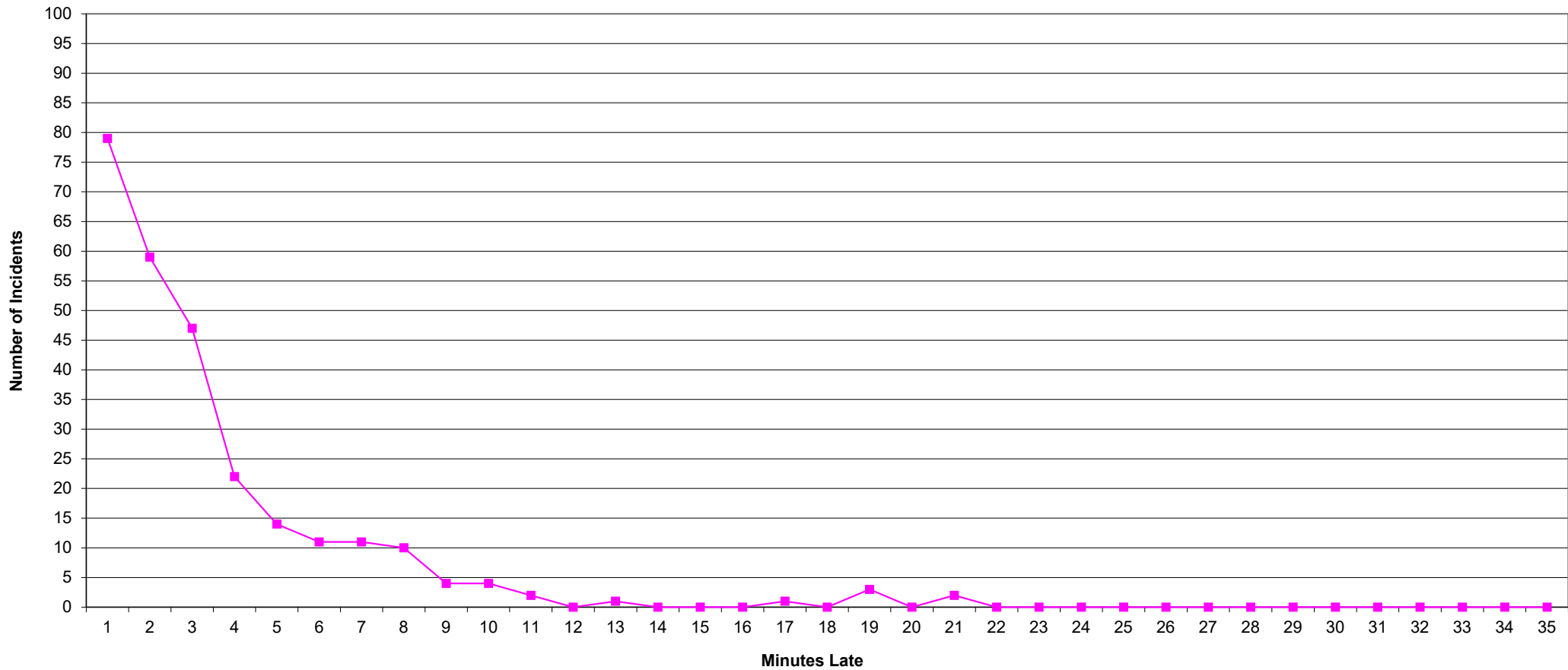
“To serve our communities’ pre-hospital needs through value-driven, compassionate, and clinically superior care.”

P1 Compliance Trends – WESTERN DIVISION

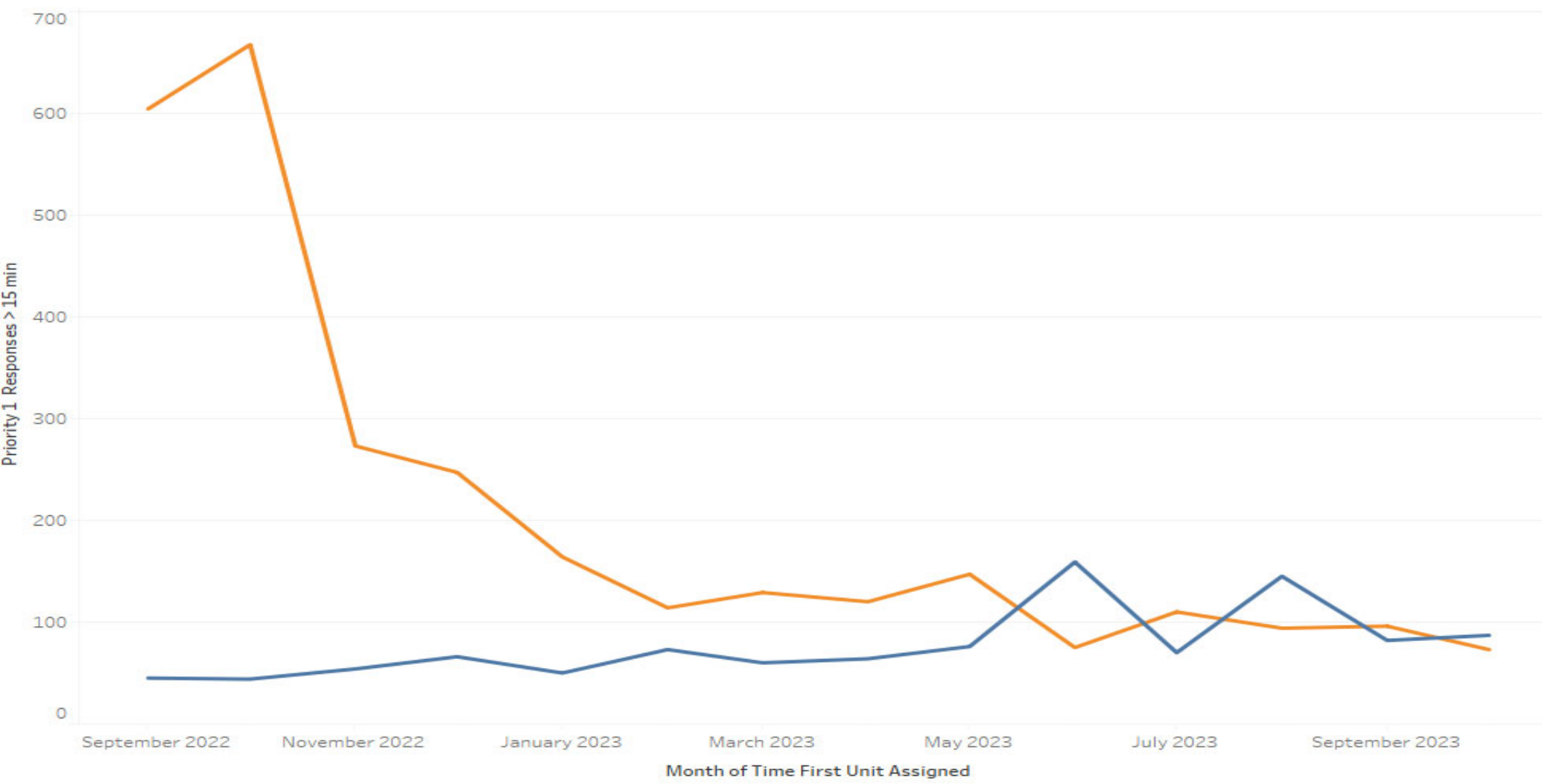


■ Responses ■ Transports ● Beneficiary P1 Compliance

Eastern Division Priority 1 Late Calls October 2023

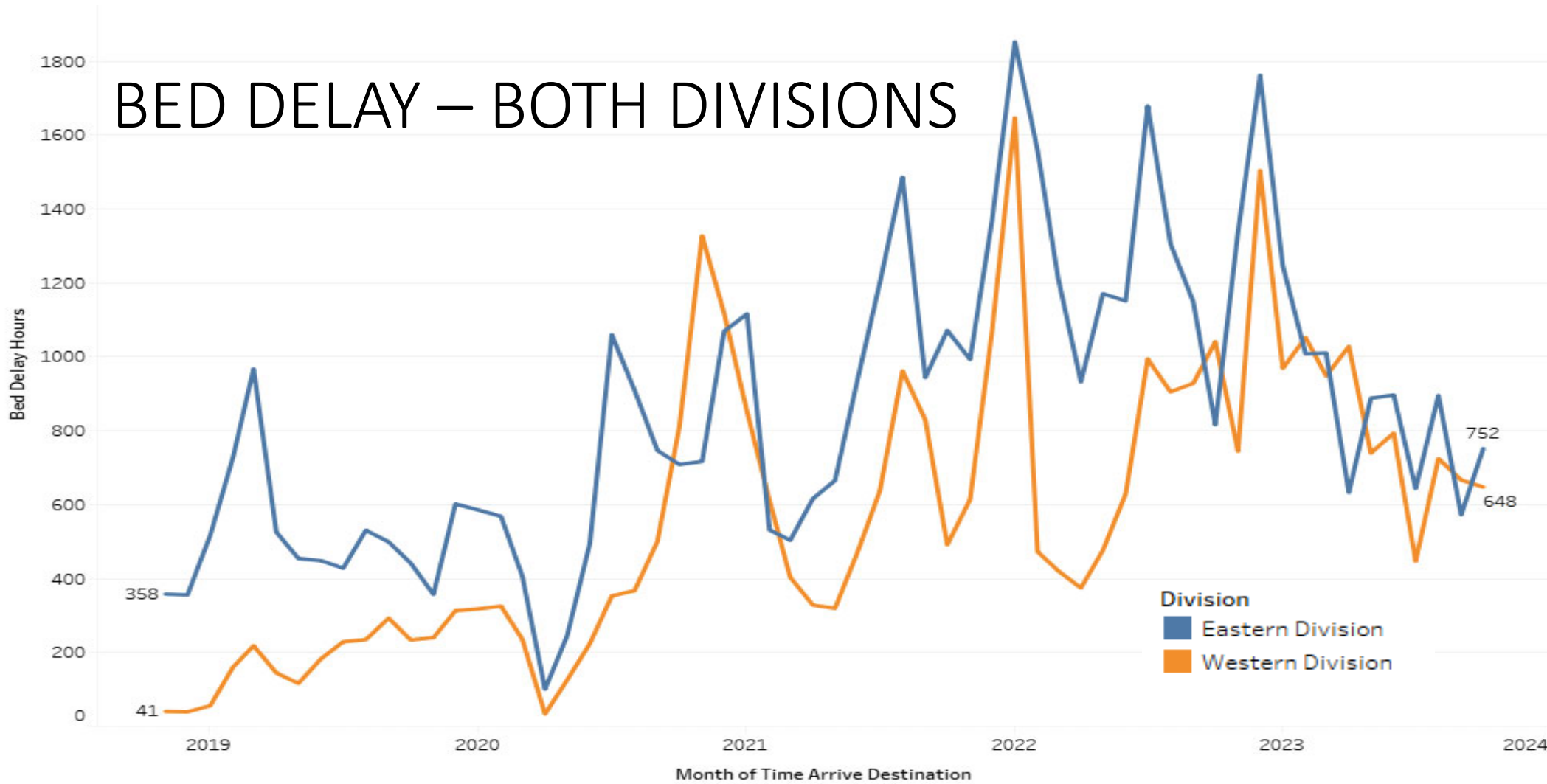


“To serve our communities’ pre-hospital needs through value-driven, compassionate, and clinically superior care.”



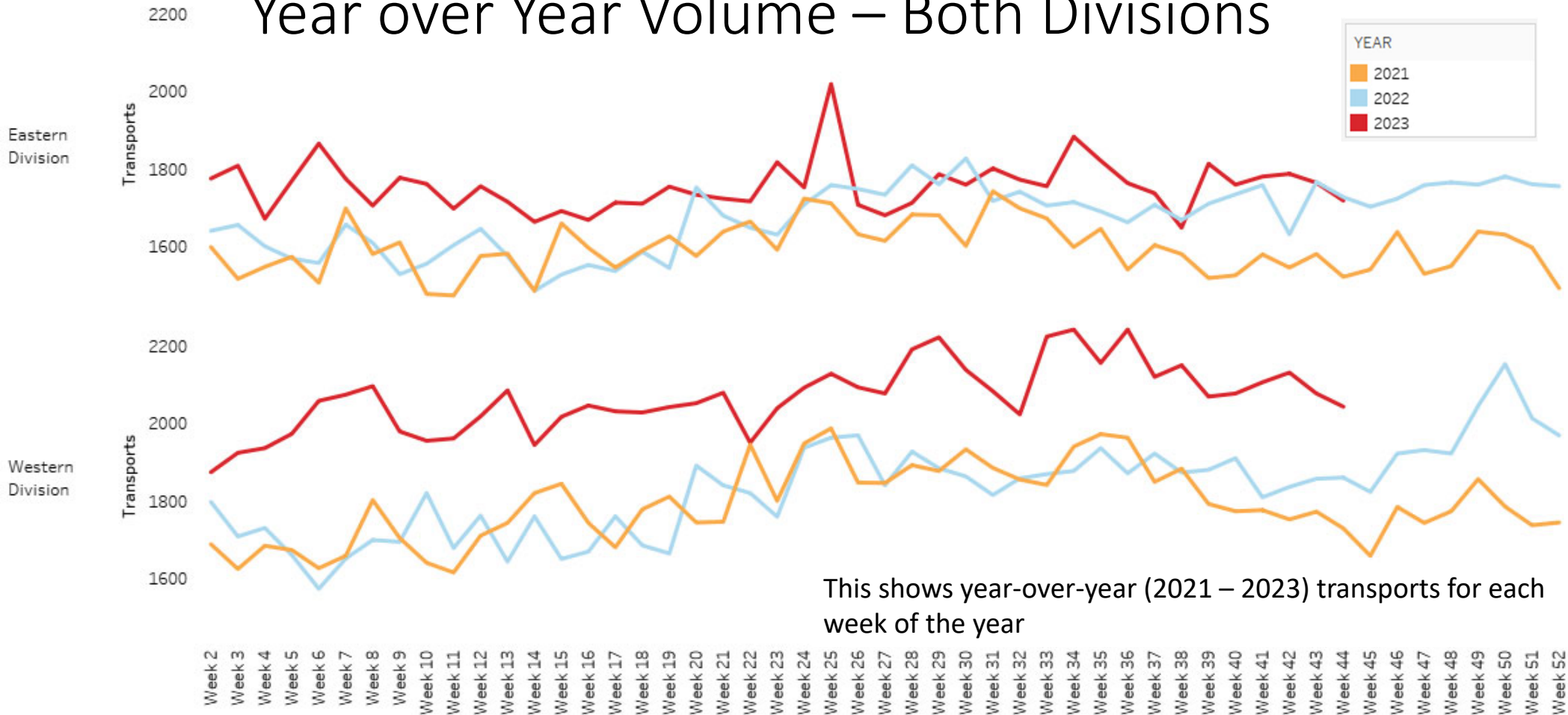
“To serve our communities’ pre-hospital needs through value-driven, compassionate, and clinically superior care.”

BED DELAY – BOTH DIVISIONS



“To serve our communities’ pre-hospital needs through value-driven, compassionate, and clinically superior care.”

Year over Year Volume – Both Divisions

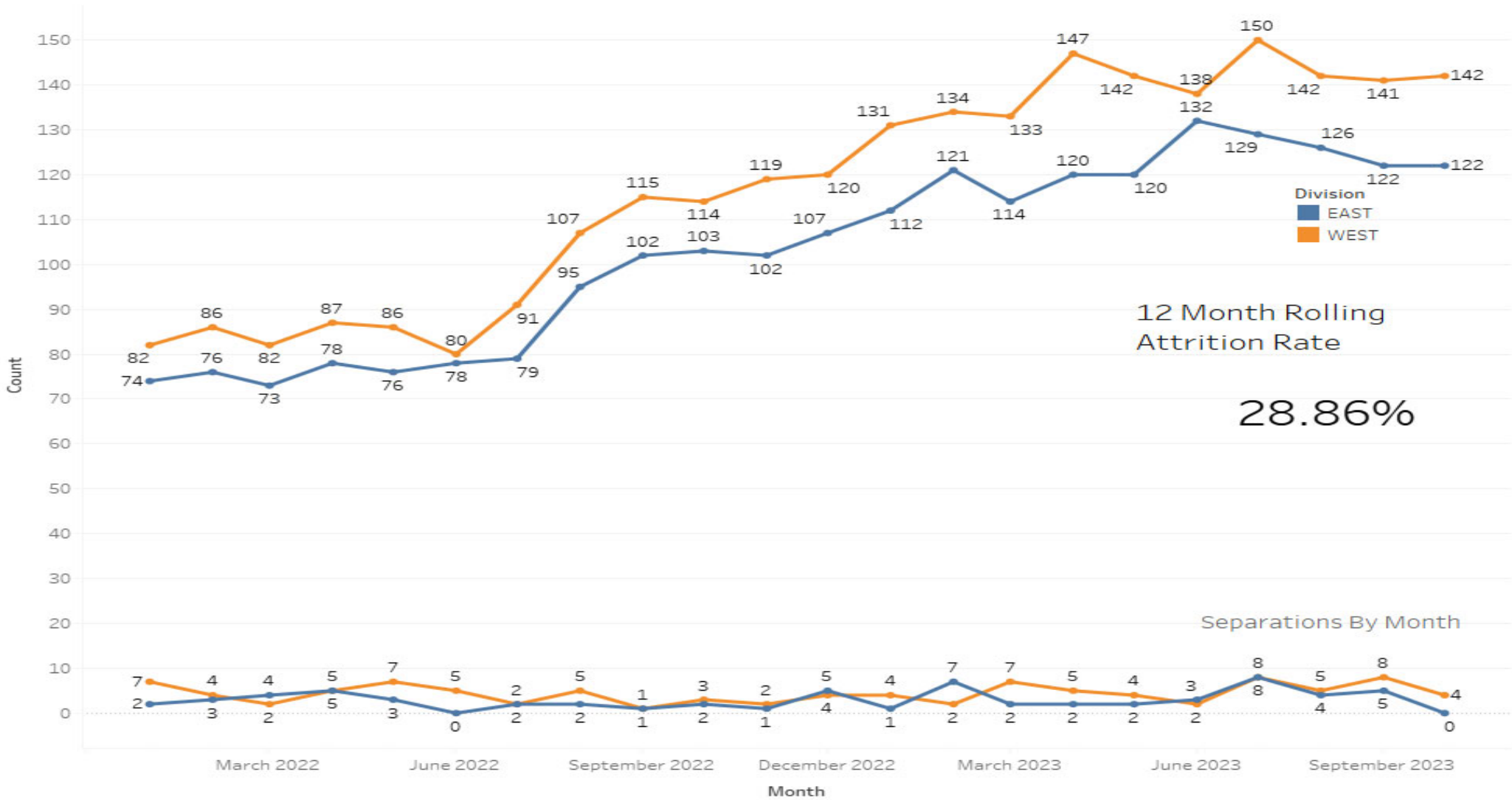


This shows year-over-year (2021 – 2023) transports for each week of the year

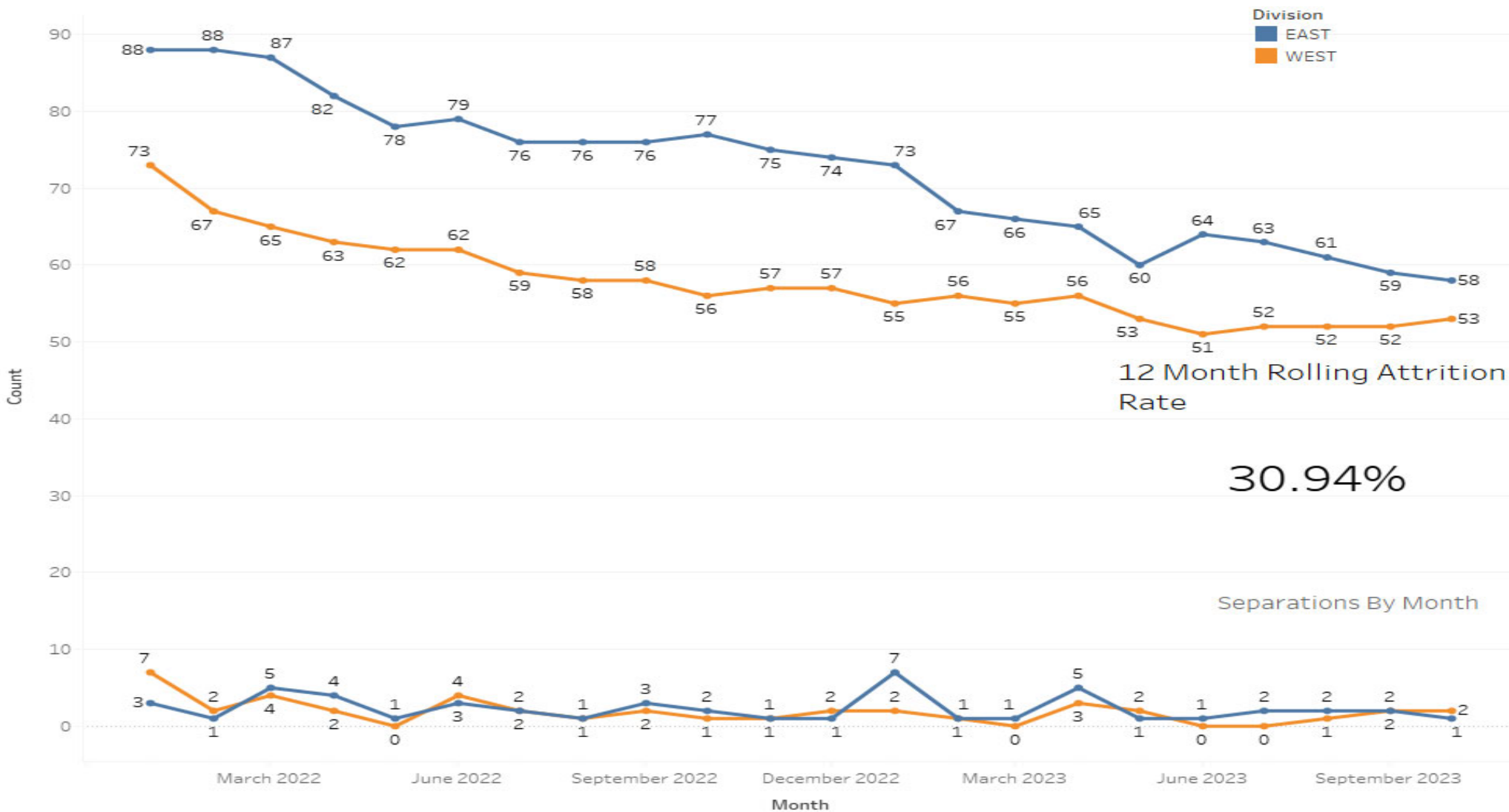


“To serve our communities’ pre-hospital needs through value-driven, compassionate, and clinically superior care.”

EMT Headcount Over Time



Paramedic Headcount over time



Headcount Dashboard



		FT Goal	Full Time	PT	Headcount Percent
EAST	911 - EMT	89	105	4	120%
	Communications	26	20	0	77%
	IFT - EMT	16	5	2	38%
	Logistics	22	25	0	114%
	Paramedic	75	56	13	83%
	Total	228	211	19	97%
WEST	911 - EMT	98	115	22	129%
	Communications	26	16	1	63%
	IFT - EMT	20	3	1	18%
	Logistics	22	19	3	93%
	Paramedic	80	50	6	66%
	Total	246	203	33	89%
Grand Total		474	414	52	93%



“To serve our communities’ pre-hospital needs through value-driven, compassionate, and clinically superior care.”

EMSA



“To serve our communities’ pre-hospital needs through value-driven, compassionate, and clinically superior care.”