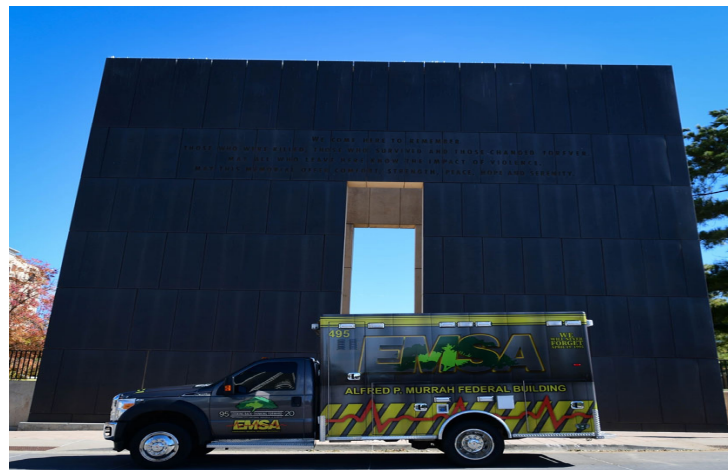


EMSA



“To serve our communities’ pre-hospital needs through value-driven, compassionate, and clinically superior care.”

Operational Compliance Report

March 2023

Johna Easley

President & CEO



“To serve our communities’ pre-hospital needs through value-driven, compassionate, and clinically superior care.”

March 2023 Compliance Summary – Combined

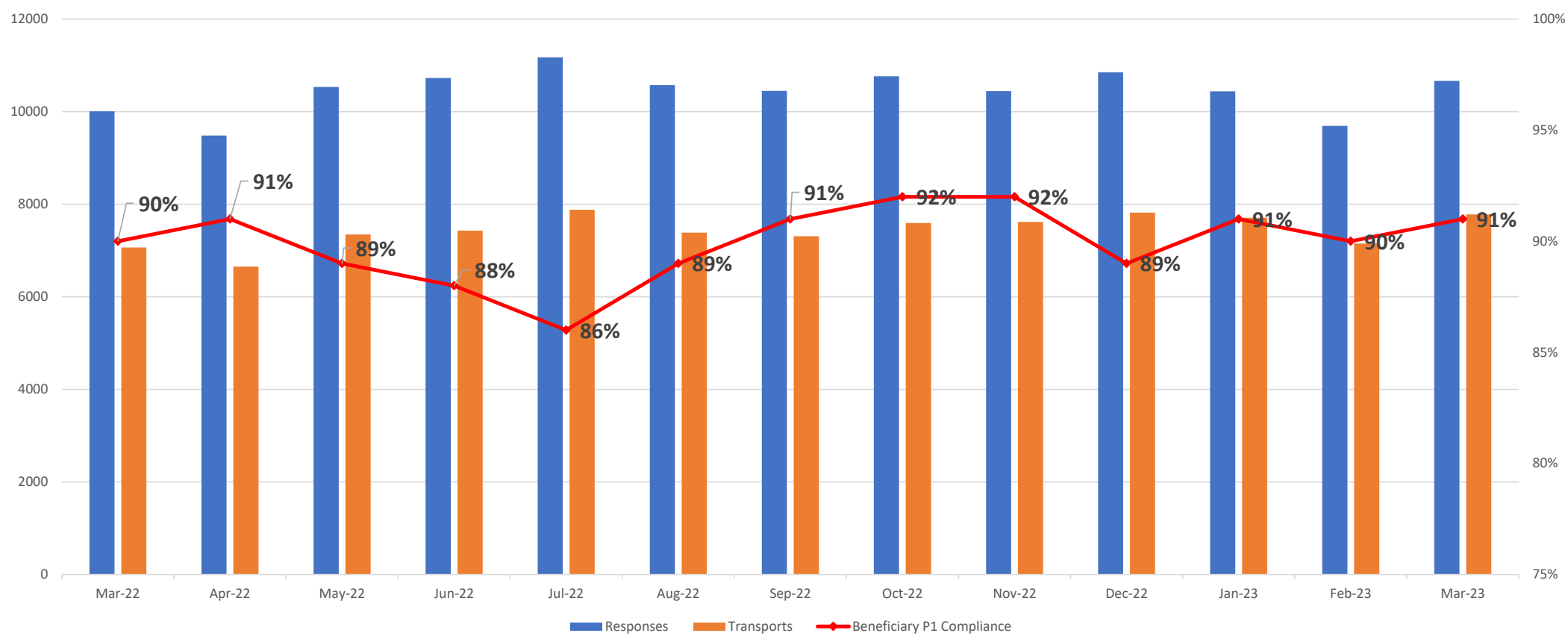
	Priority 1	Priority 2	Priority 3	Priority 4
East Ben. Total	91%	96%	82%	76%
East NB Total	Priority 1&2	85%	100%	N/A
West Ben. Total	84%	96%	82%	69%
West NB Total	79%	94%	76%	100%



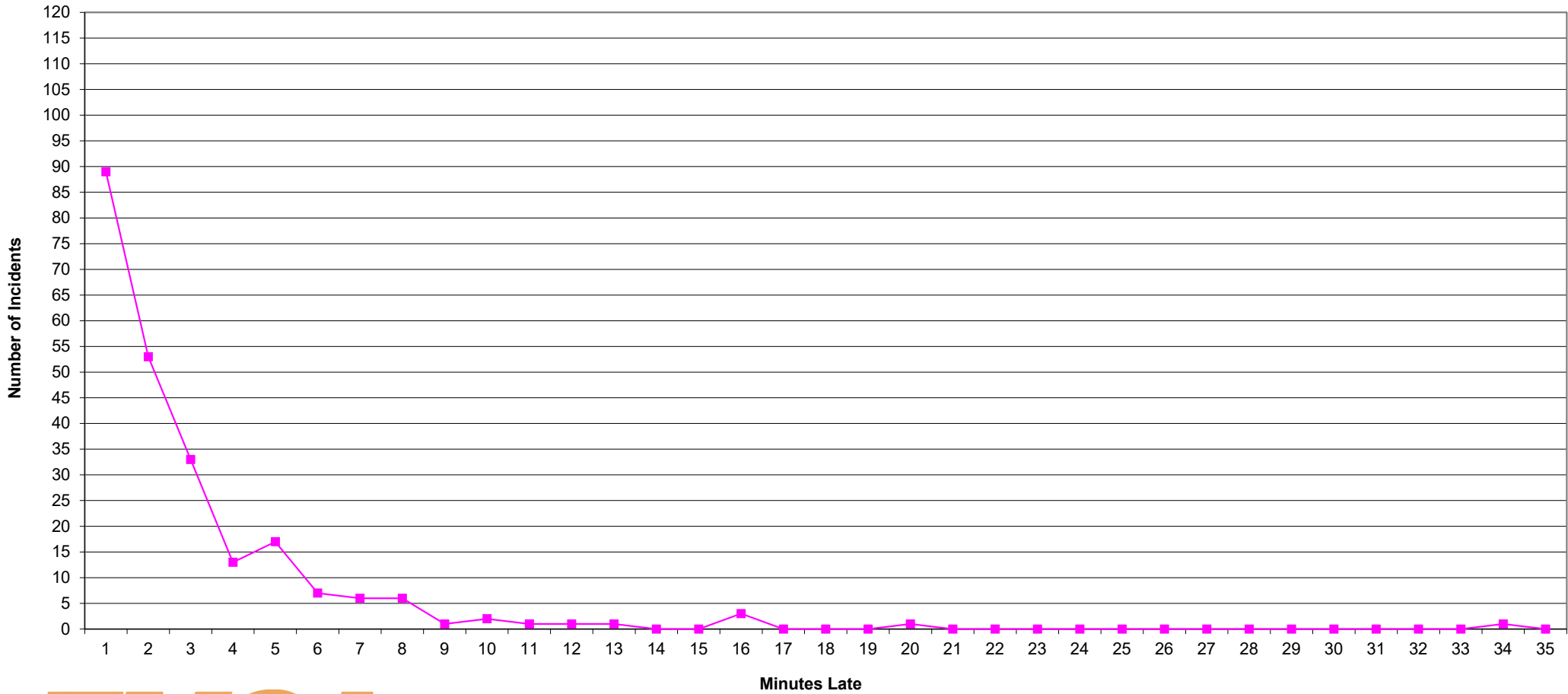
“To serve our communities’ pre-hospital needs through value-driven, compassionate, and clinically superior care.”

P1 Compliance Trends – EASTERN DIVISION

East Beneficiary Response Time Compliance with Response and Transport Totals



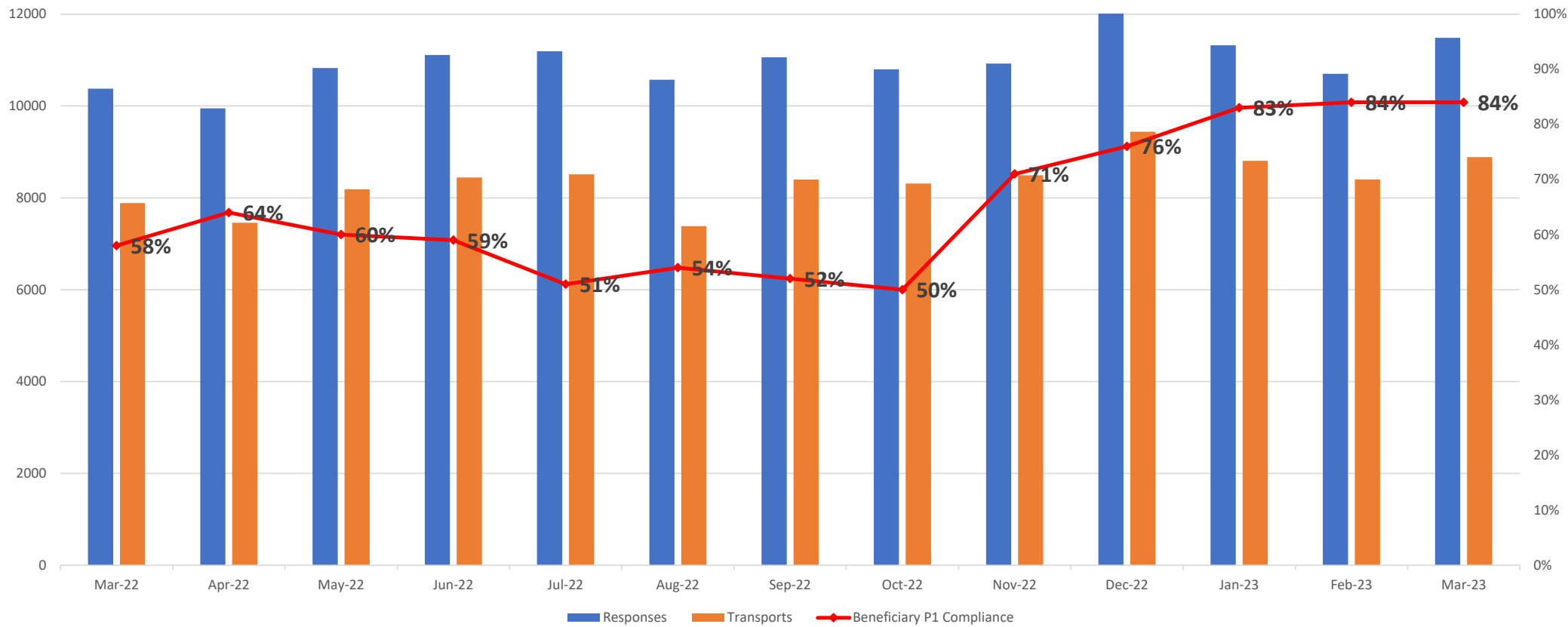
Eastern Division Priority 1 Late Calls March 2023



“To serve our communities’ pre-hospital needs through value-driven, compassionate, and clinically superior care.”

P1 Compliance Trends – WESTERN DIVISION

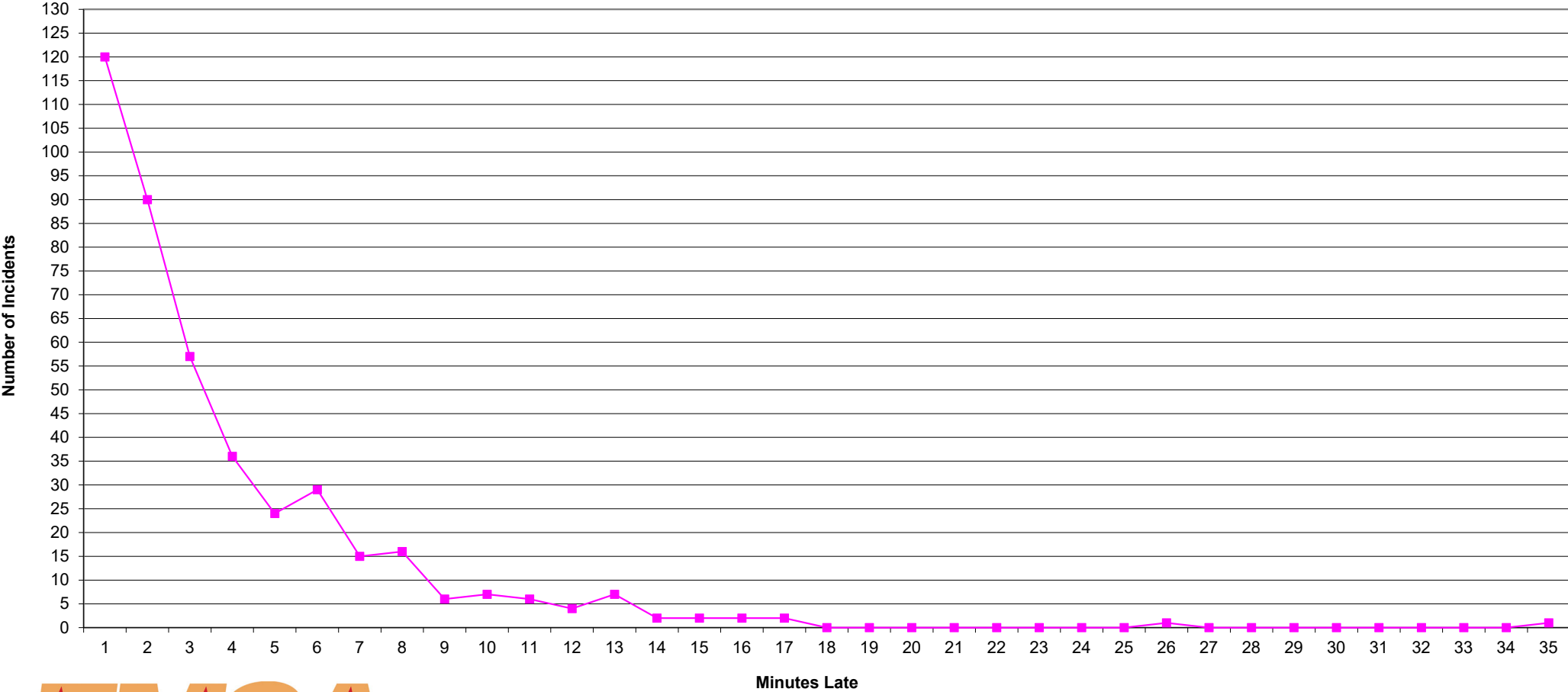
West Beneficiary Response Time Compliance with Response and Transport Totals



■ Responses ■ Transports ◆ Beneficiary P1 Compliance



**Western Division Priority 1 Late Calls
March 2023**

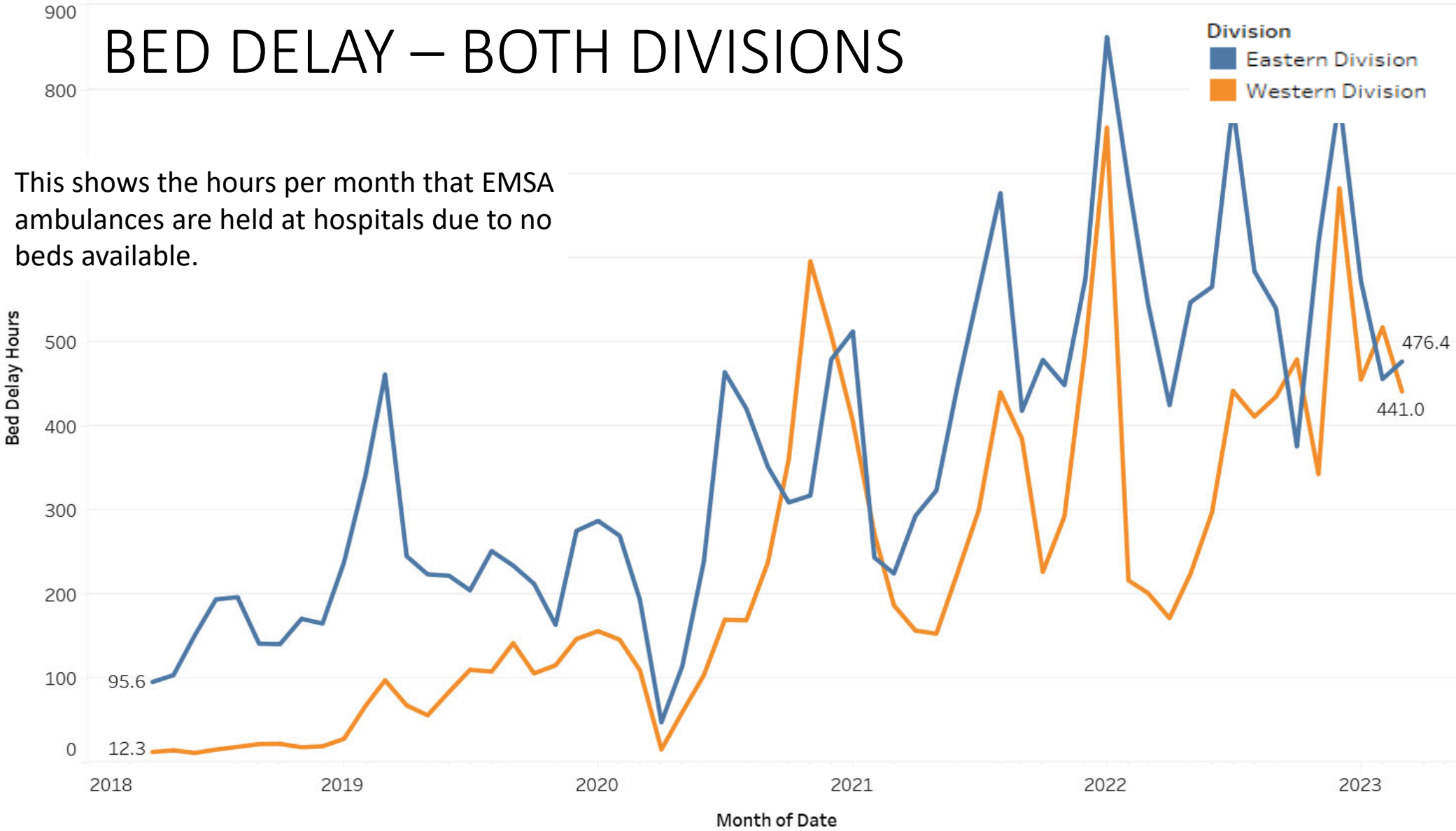


“To serve our communities’ pre-hospital needs through value-driven, compassionate, and clinically superior care.”

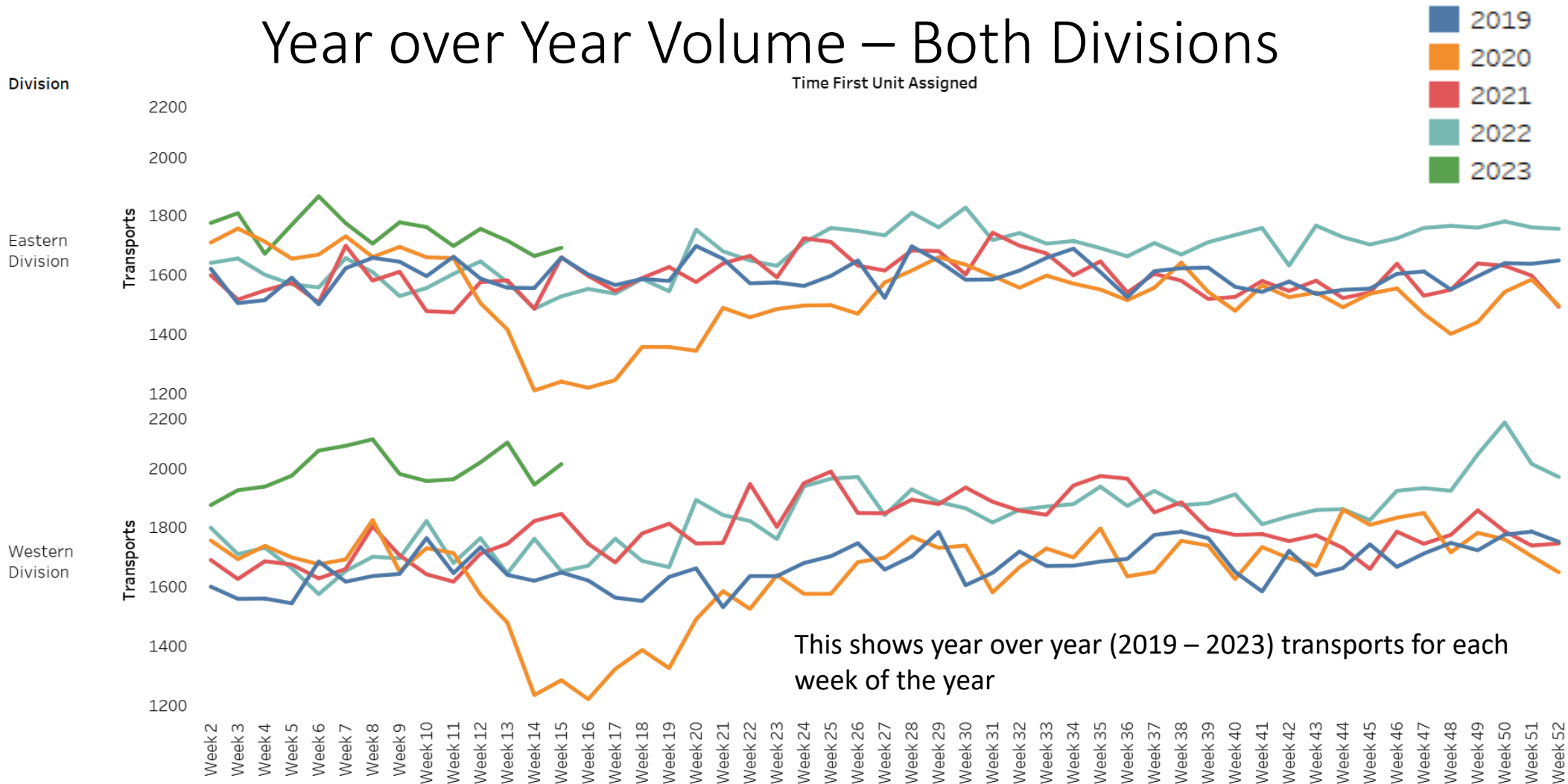
BED DELAY – BOTH DIVISIONS

This shows the hours per month that EMSA ambulances are held at hospitals due to no beds available.

Division
■ Eastern Division
■ Western Division



Year over Year Volume – Both Divisions



“To serve our communities’ pre-hospital needs through value-driven, compassionate, and clinically superior care.”

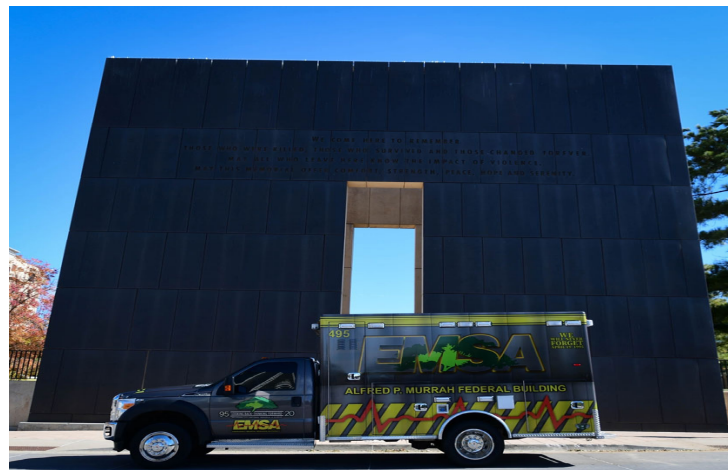
Headcount Dashboard



		FT Goal	Full Time	PT	Headcount Percent
EAST	911 - EMT	89	103	9	121%
	Communications	23	18	0	78%
	IFT - EMT	16	3	2	25%
	Logistics	22	24	1	111%
	Paramedic	75	59	17	90%
	Total	225	207	29	98%
WEST	911 - EMT	98	102	18	113%
	Communications	23	20	1	89%
	IFT - EMT	20	2	2	15%
	Logistics	22	24	5	120%
	Paramedic	80	56	7	74%
	Total	243	204	33	91%
Grand Total	468	411	62	94%	

**Not Including Contract Paramedics

EMSA



“To serve our communities’ pre-hospital needs through value-driven, compassionate, and clinically superior care.”