

EMSA



“To serve our communities’ pre-hospital needs through value-driven, compassionate, and clinically superior care.”

Revenue Cycle Management Update February 2023

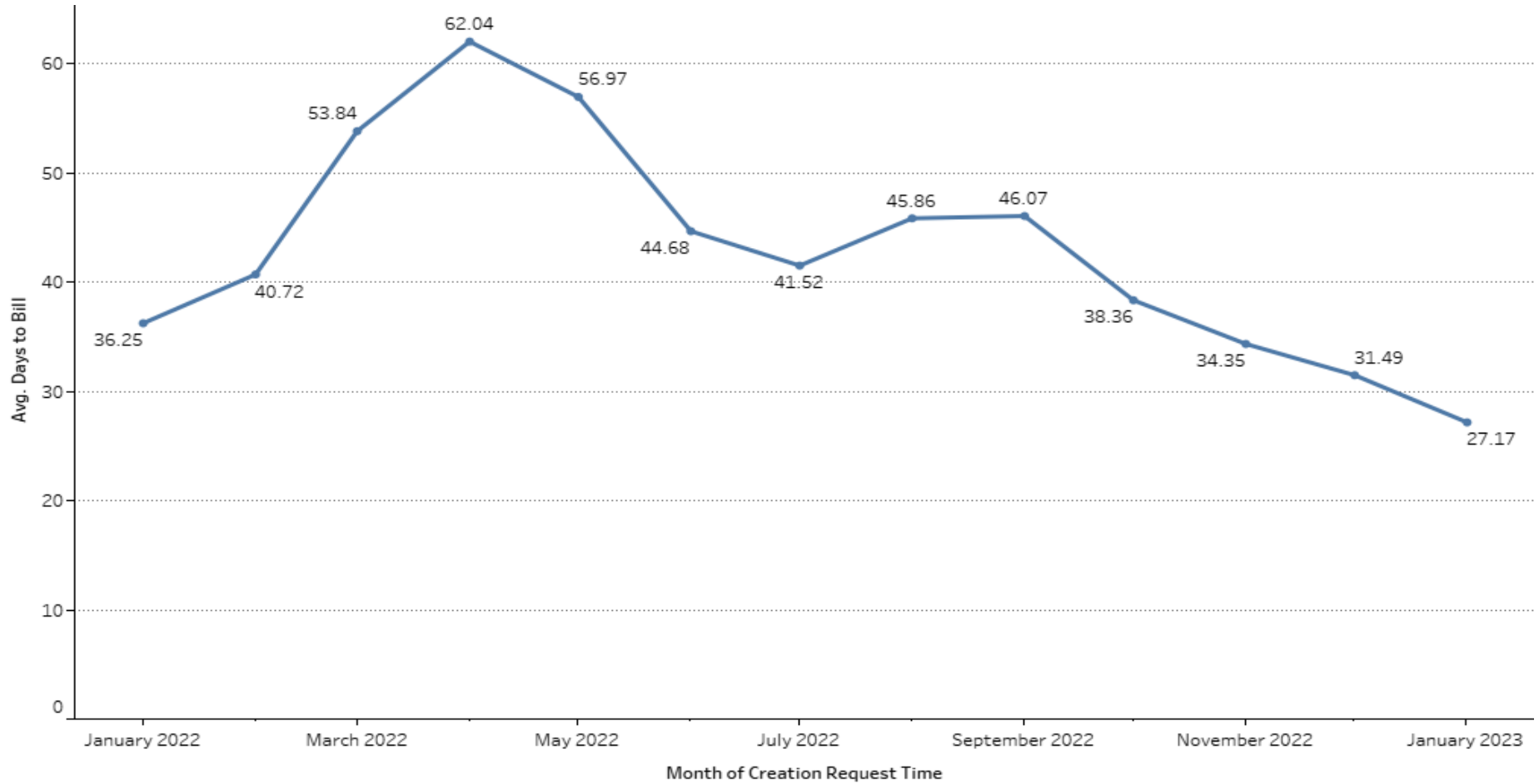
Sonia Coleman

Director of Revenue Cycle Management



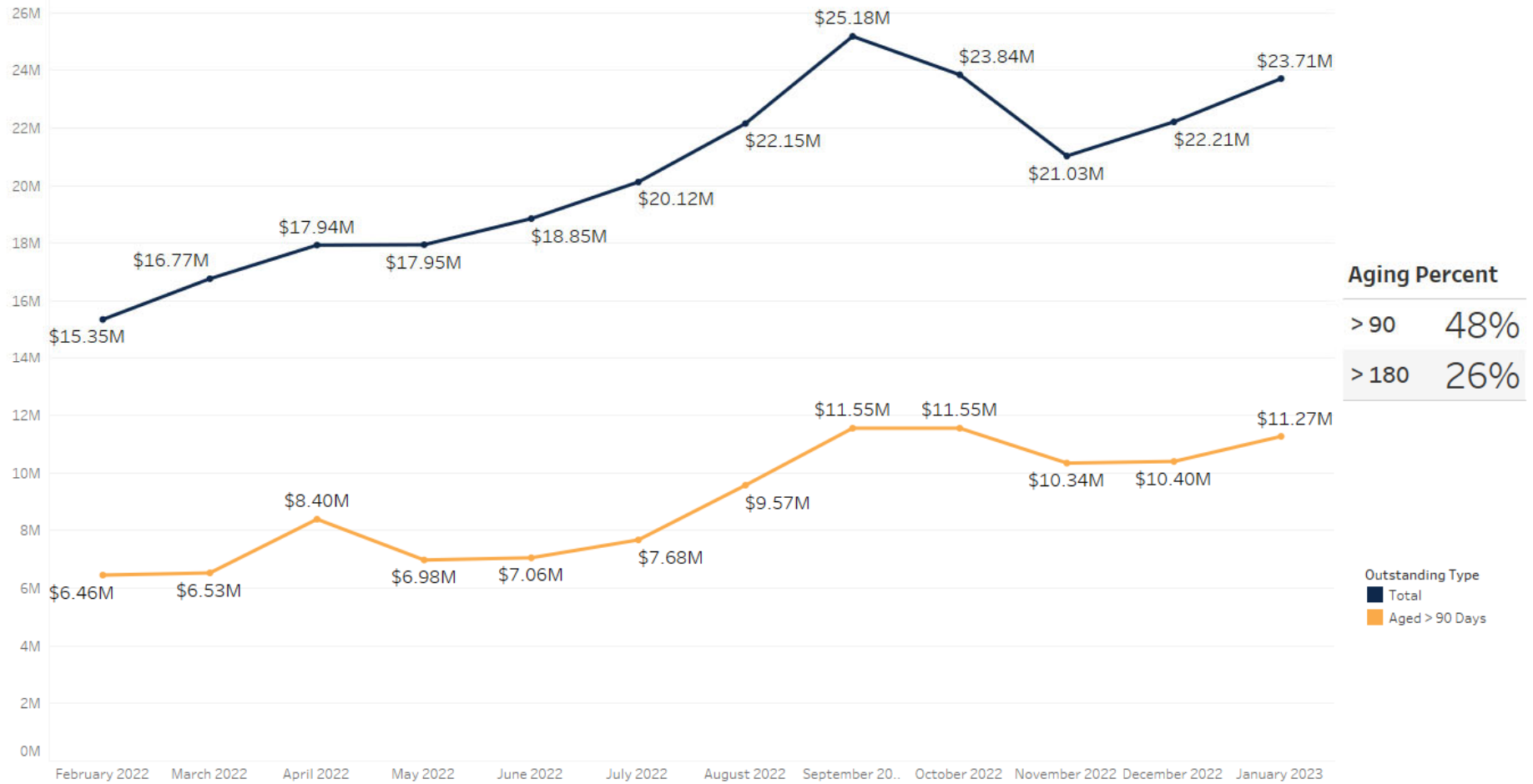
“To serve our communities’ pre-hospital needs through value-driven, compassionate, and clinically superior care.”

Days to Bill



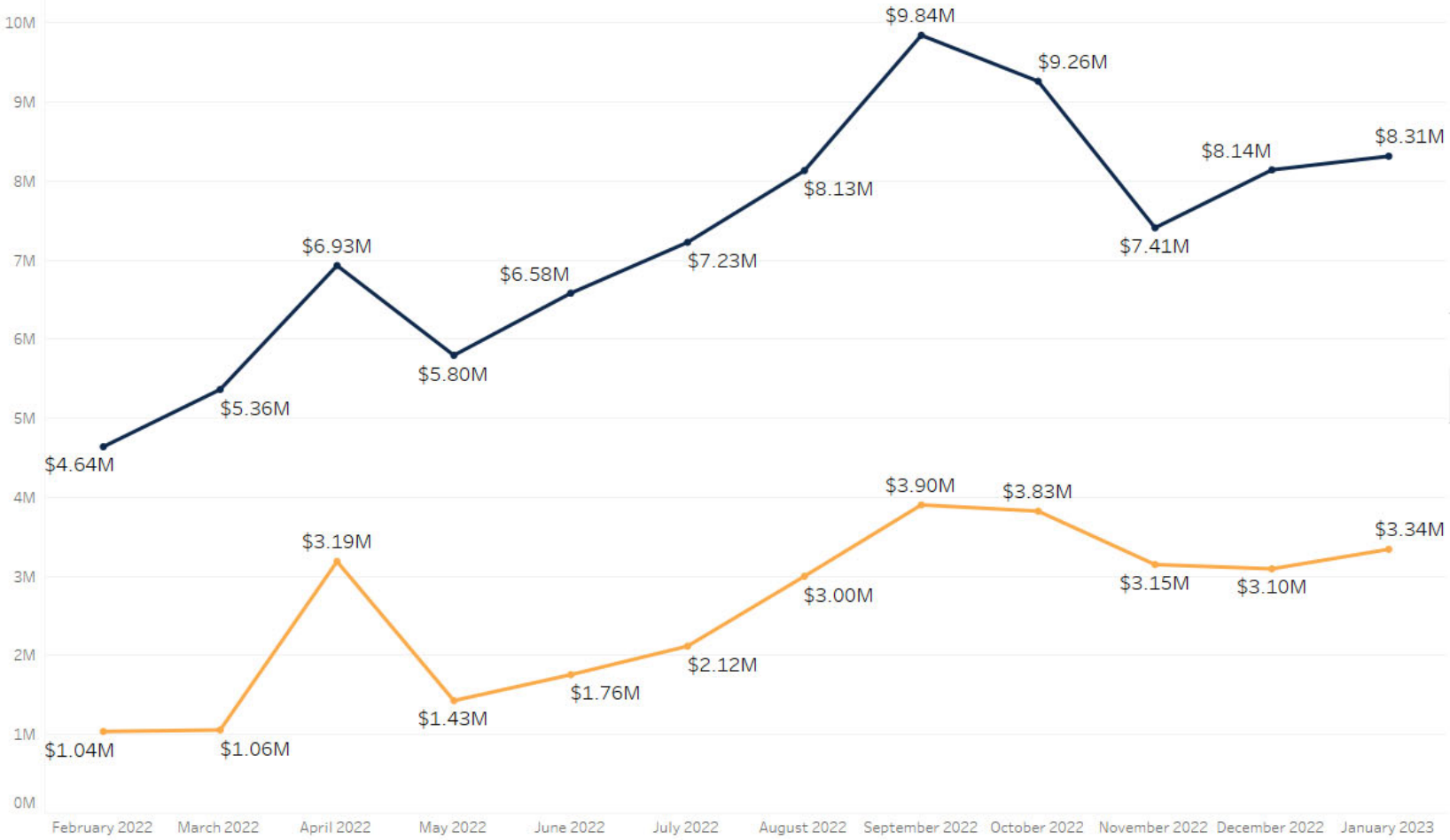
“To serve our communities’ pre-hospital needs through value-driven, compassionate, and clinically superior care.”

Aging All Payors Less Self Pay



“To serve our communities’ pre-hospital needs through value-driven, compassionate, and clinically superior care.”

Aging Medicare



Aging Percent

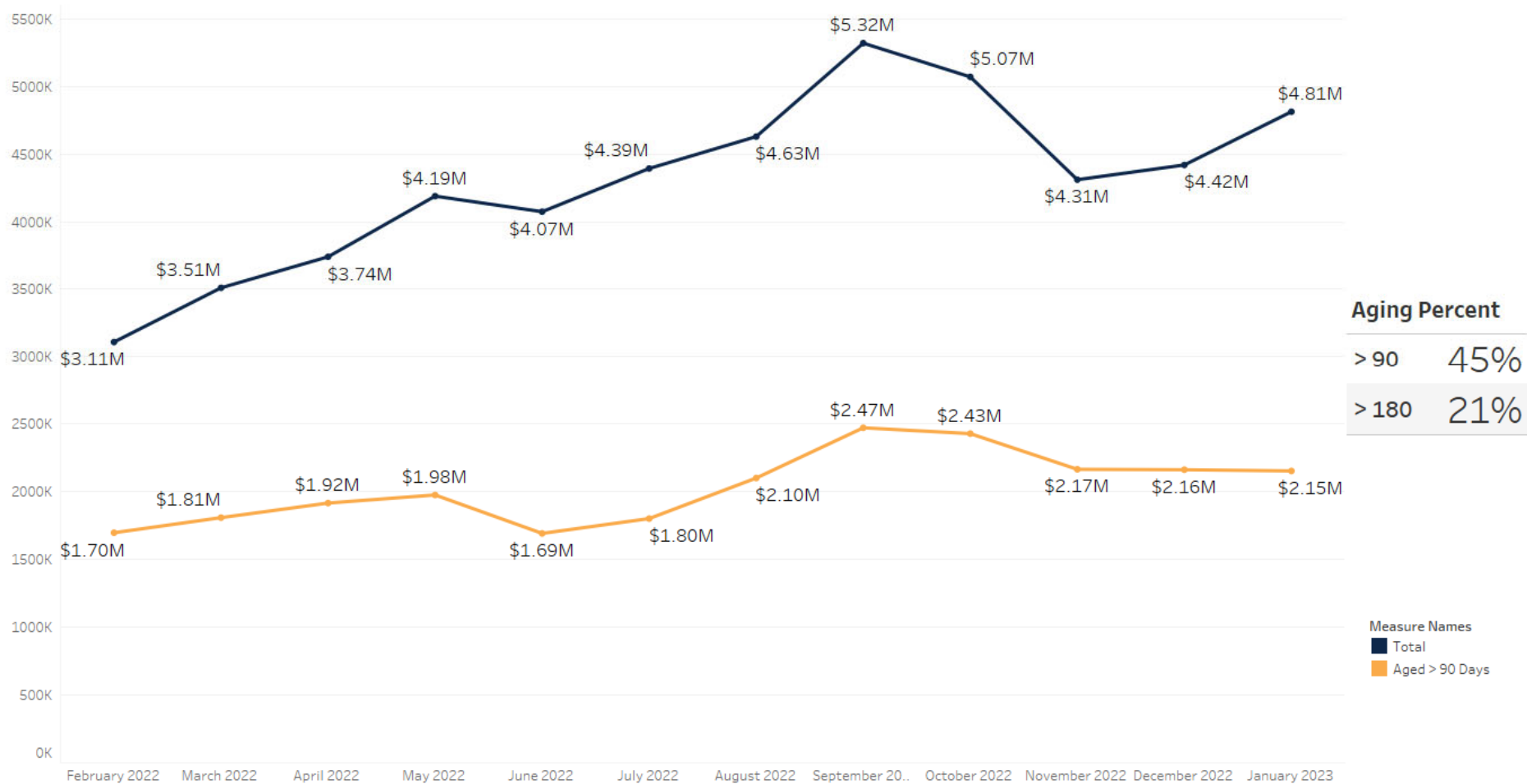
> 90	40%
> 180	26%

Measure Names
■ Total
■ Aged > 90 Days



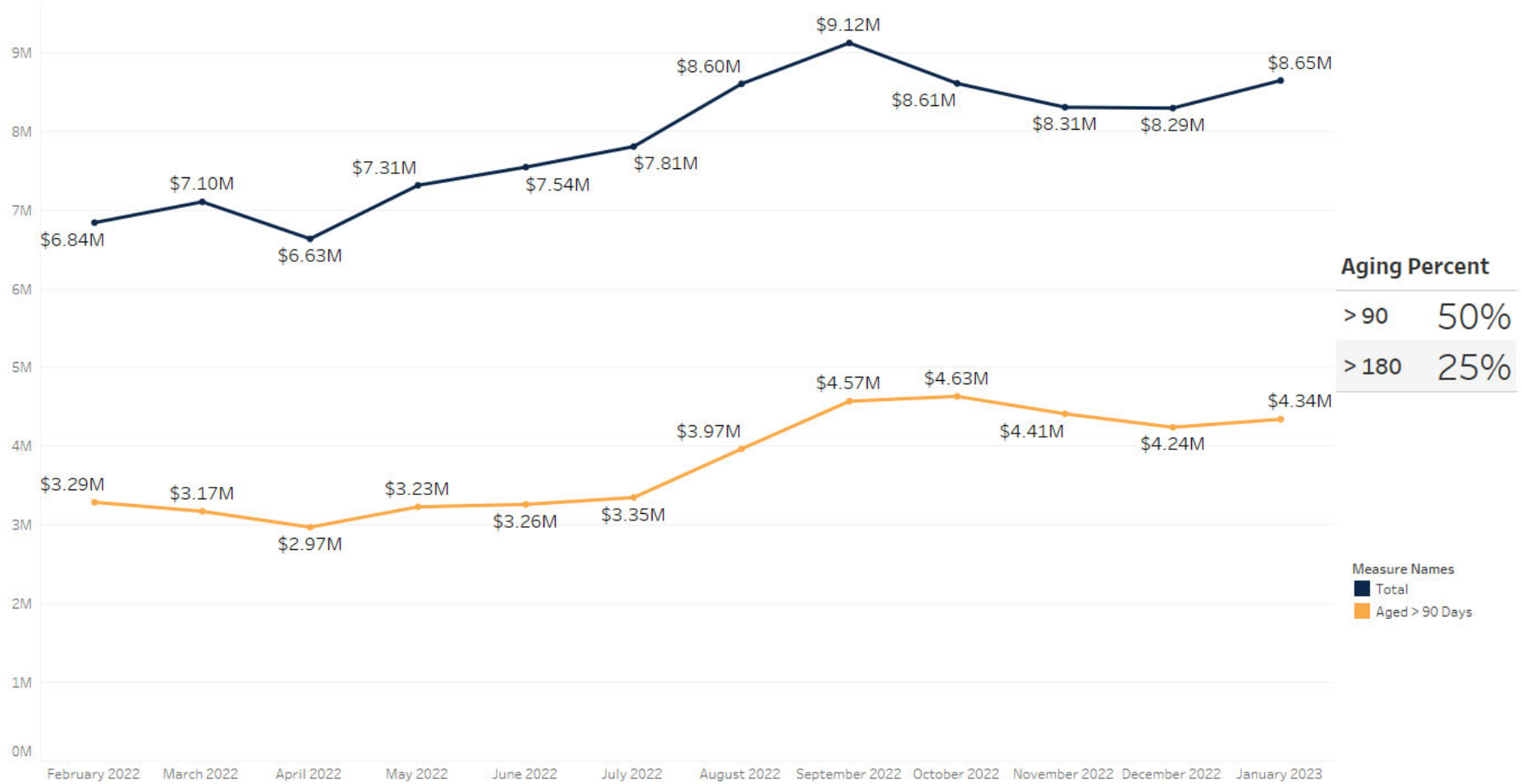
“To serve our communities’ pre-hospital needs through value-driven, compassionate, and clinically superior care.”

Aging Medicaid



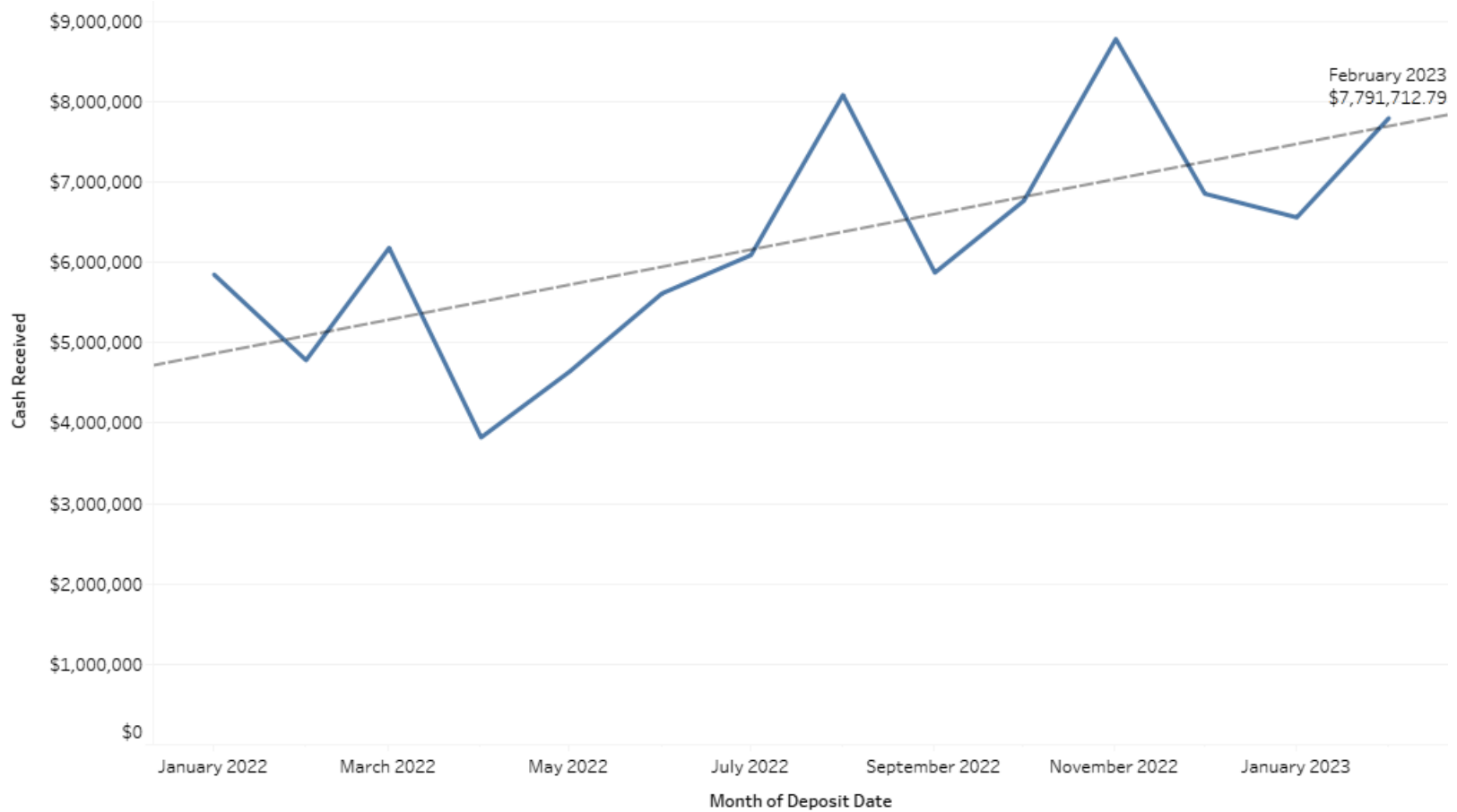
“To serve our communities’ pre-hospital needs through value-driven, compassionate, and clinically superior care.”

Aging Commercial Payors



“To serve our communities’ pre-hospital needs through value-driven, compassionate, and clinically superior care.”

Cash Collections



“To serve our communities’ pre-hospital needs through value-driven, compassionate, and clinically superior care.”

Revenue Cycle Progress Report

- Front End Optimization
 - Internal Hires
- Back End Optimization
 - Aging Cleanup
 - Cross training
 - Auditing



“To serve our communities’ pre-hospital needs through value-driven, compassionate, and clinically superior care.”