

# Compliance Summary

From June 01, 2022 to June 30, 2022

## Eastern Division Overall Compliance

	Priority 1			Priority 2			Priority 3			Priority 4		
	Inc.	Late	%	Inc.	Late	%	Inc.	Late	%	Inc.	Late	%
Tulsa 1	649	75	88%	1,200	77	93%	493	66	86%	2	0	100%
Tulsa 2	529	57	89%	870	70	91%	6	0	100%	6	0	100%
Tulsa 3	799	89	88%	1,343	120	91%	643	95	85%	11	0	100%
<b>Tulsa Total</b>	<b>1,977</b>	<b>221</b>	<b>88%</b>	<b>3,413</b>	<b>267</b>	<b>92%</b>	<b>1,142</b>	<b>161</b>	<b>85%</b>	<b>19</b>	<b>0</b>	<b>100%</b>
Sand Springs	89	25		112	10	82%	0	0	N/A	0	0	N/A
Jenks	31	8		56	9	80%	1	0	100%	1	0	100%
Bixby	41	18		79	17	70%	0	0	N/A	0	0	N/A
<b>Total Non-Beneficiary</b>	<b>161</b>	<b>51</b>		<b>247</b>	<b>36</b>	<b>78%</b>	<b>1</b>	<b>0</b>	<b>100%</b>	<b>1</b>	<b>0</b>	<b>100%</b>

**Average Response Time Priority 1 & 2**

**Received to On Scene: 11:15**  
**Dispatched to On Scene: 9:30**

The beneficiary city of Tulsa must be above 90% each month. In the suburbs of Sand Springs, Jenks and Bixby, the total of Priority 1 and Priority 2 incidents are combined to get the compliance percentile each month. Each suburban city must be above 75% each month, and combined they must be over 90 %. Percentage figures above are rounded down as per the RFP.

# Compliance Summary

From June 01, 2022 to June 30, 2022

## Western Division Overall Compliance

	Priority 1			Priority 2			Priority 3			Priority 4		
	Inc.	Late	%	Inc.	Late	%	Inc.	Late	%	Inc.	Late	%
Oklahoma City 1	1,120	368	67%	1,886	373	80%	874	269	69%	10	3	70%
Oklahoma City 2	1,089	498	54%	1,740	424	75%	361	124	65%	7	2	71%
Edmond	195	119	38%	289	94	67%	108	46	57%	0	0	N/A
<b>Total OKC &amp; Edmond</b>	<b>2,404</b>	<b>985</b>	<b>59%</b>	<b>3,915</b>	<b>891</b>	<b>77%</b>	<b>1,343</b>	<b>439</b>	<b>67%</b>	<b>17</b>	<b>5</b>	<b>70%</b>
The Village	28	12		52	14	67%	1	0	100%	0	0	N/A
Nichols Hills	1	0		8	1	88%	0	0	N/A	0	0	N/A
<b>Total Non-Beneficiary</b>	<b>29</b>	<b>12</b>		<b>60</b>	<b>15</b>	<b>69%</b>	<b>1</b>	<b>0</b>	<b>100%</b>	<b>0</b>	<b>0</b>	<b>N/A</b>

**Average Response Time Priority 1 & 2**

**Received to On Scene: 16:45**  
**Dispatched to On Scene: 12:58**

The beneficiary city of Oklahoma City must be above 90% each month. In the suburbs of The Village and Nichols Hills, the total of Priority 1 and Priority 2 incidents are combined to get the compliance percentile each month. Each suburban city must be above 75% each month, and combined they must be over 90%. Percentages above are rounded down as per the RFP.

**Compliance Summary**  
**June 1, 2022 to June 30, 2022**

**Eastern Division**  
**Non-discrimination**

	<b>Priority 1</b>		
	<b>Inc.</b>	<b>Late</b>	<b>%</b>
<b>District 1</b>	649	75	88.4%
<b>District 2</b>	529	57	89.2%
<b>District 3</b>	799	89	88.9%

Each district within the Beneficiary City of Tulsa must be individually above 75% on Priority 1 transports (with a minimum of 100 incidents in each for measurement). Percentage figures above are rounded down as per the RFP.

**Western Division**  
**Non-discrimination**

	<b>Priority 1</b>		
	<b>Inc.</b>	<b>Late</b>	<b>%</b>
<b>District 1</b>	1120	368	67.1%
<b>District 2</b>	1089	498	54.3%
<b>Edmond</b>	195	119	39.0%

Each district of the Western Division must be individually above 75% on Priority 1 transports (with a minimum of 100 incidents in each for measurement). Percentage figures above are rounded down as per the RFP.

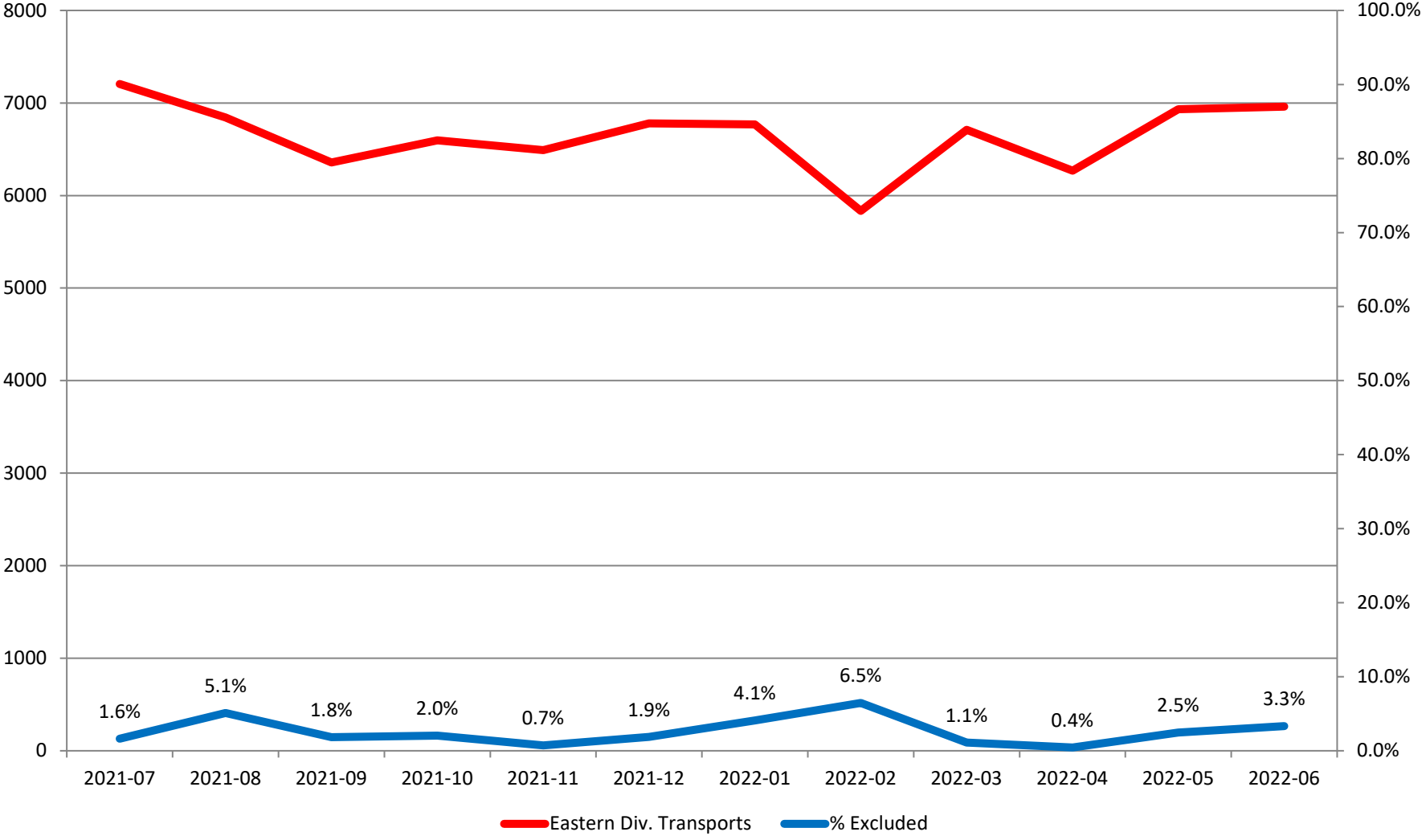
Response Time Exclusion Summary Report  
 Three Months ending June, 2022

	Month Priority	2022-04				2022-05				2022-06			
		1	2	3	4	1	2	3	4	1	2	3	4
<b>Eastern Division</b>													
Final Other													
Final Other Declared Disaster													
Final Other 2nd Unit													
Final Other Interfacility Transfer													
Final System Overload		13	11			56	82	1		84	145		
Final Weather		4				25	6			2	1		
<b>Eastern Exclusions Total</b>		<b>17</b>	<b>11</b>	<b>0</b>	<b>0</b>	<b>81</b>	<b>88</b>	<b>1</b>	<b>0</b>	<b>86</b>	<b>146</b>	<b>0</b>	<b>0</b>
<b>East Transports*</b>		1903	3404	944	16	2077	3798	1034	24	2138	3660	1143	20
<b>East Late</b>		198	179	142	4	260	310	173	3	272	303	161	0
<b>East % of Transports</b>		1%	0%	0%	0%	4%	2%	0%	0%	4%	4%	0%	0%
<b>East Compliance**</b>		89%	94%	84%	75%	87%	91%	83%	87%	87%	91%	85%	100%
<b>East Compliance W/O Exclusions**</b>		88%	94%	84%	75%	84%	89%	83%	87%	83%	88%	85%	100%
<b>Western Division</b>													
Final Other													
Final Other Declared Disaster													
Final Other 2nd Unit													
Final Other Interfacility Transfer													
Final System Overload		36	37	3		85	107	1		116	113	11	
Final Weather		22	18			61	32	5		30	24	9	1
<b>Western Exclusions Total</b>		<b>58</b>	<b>55</b>	<b>3</b>	<b>0</b>	<b>146</b>	<b>139</b>	<b>6</b>	<b>0</b>	<b>146</b>	<b>137</b>	<b>20</b>	<b>1</b>
<b>West Transports*</b>		2170	3725	1166	20	2404	3985	1303	18	2433	3975	1344	17
<b>West Late</b>		775	645	388	6	953	854	435	3	997	906	439	5
<b>West % of Transports</b>		3%	1%	0%	0%	6%	3%	0%	0%	6%	3%	1%	6%
<b>West Compliance**</b>		64%	82%	66%	70%	60%	78%	66%	83%	59%	77%	67%	70%
<b>West Compliance W/O Exclusions**</b>		62%	81%	66%	70%	56%	75%	66%	83%	55%	74%	66%	66%

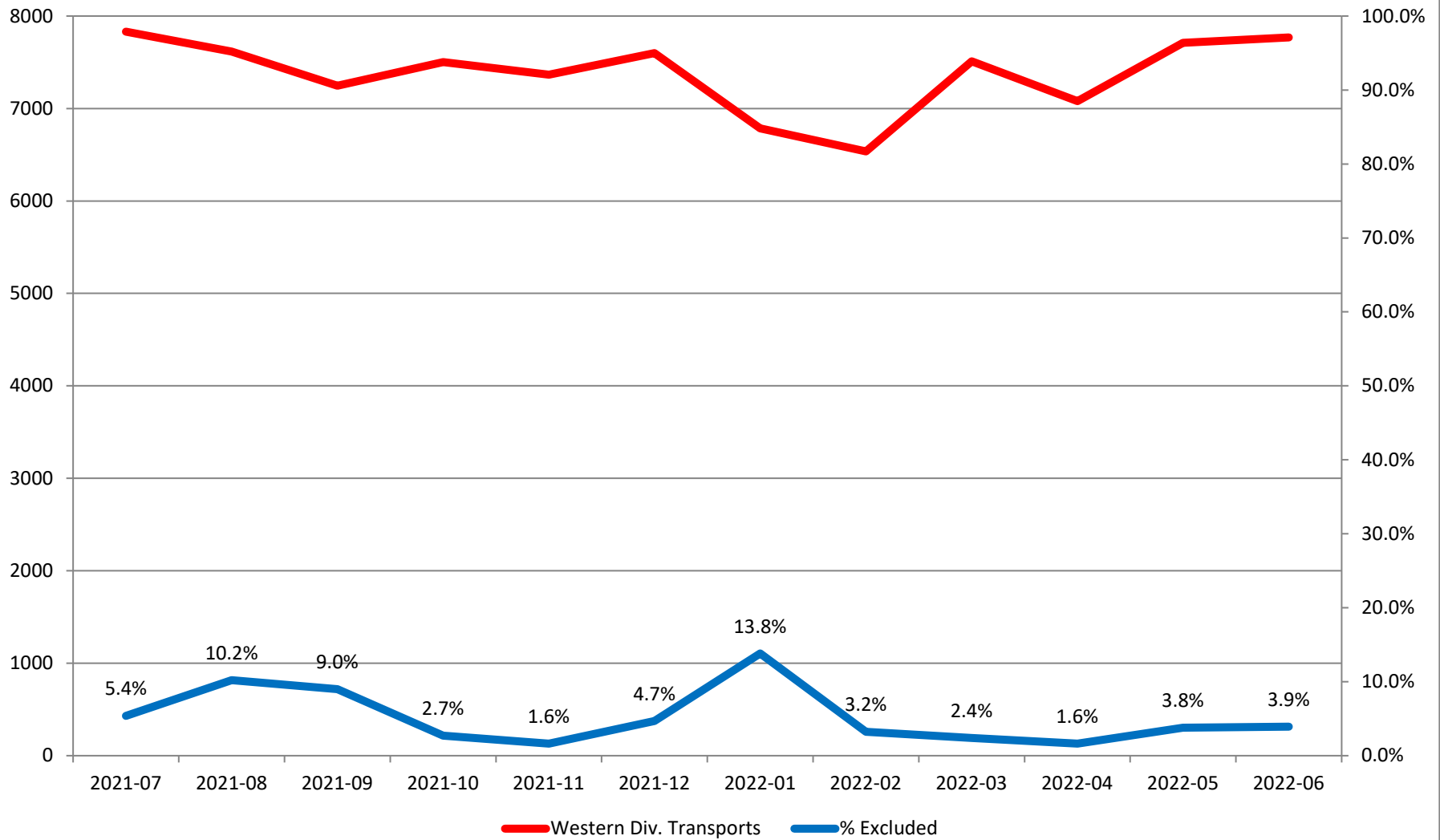
\* For the purposes of this report, transports means the number of transports that qualify for inclusion for compliance calculation purposes. Multi-unit response transports for greater than the first unit on

\*\* For the purposes of this report, beneficiary and non-beneficiary cities have been combined. Contract compliance measures them separately.

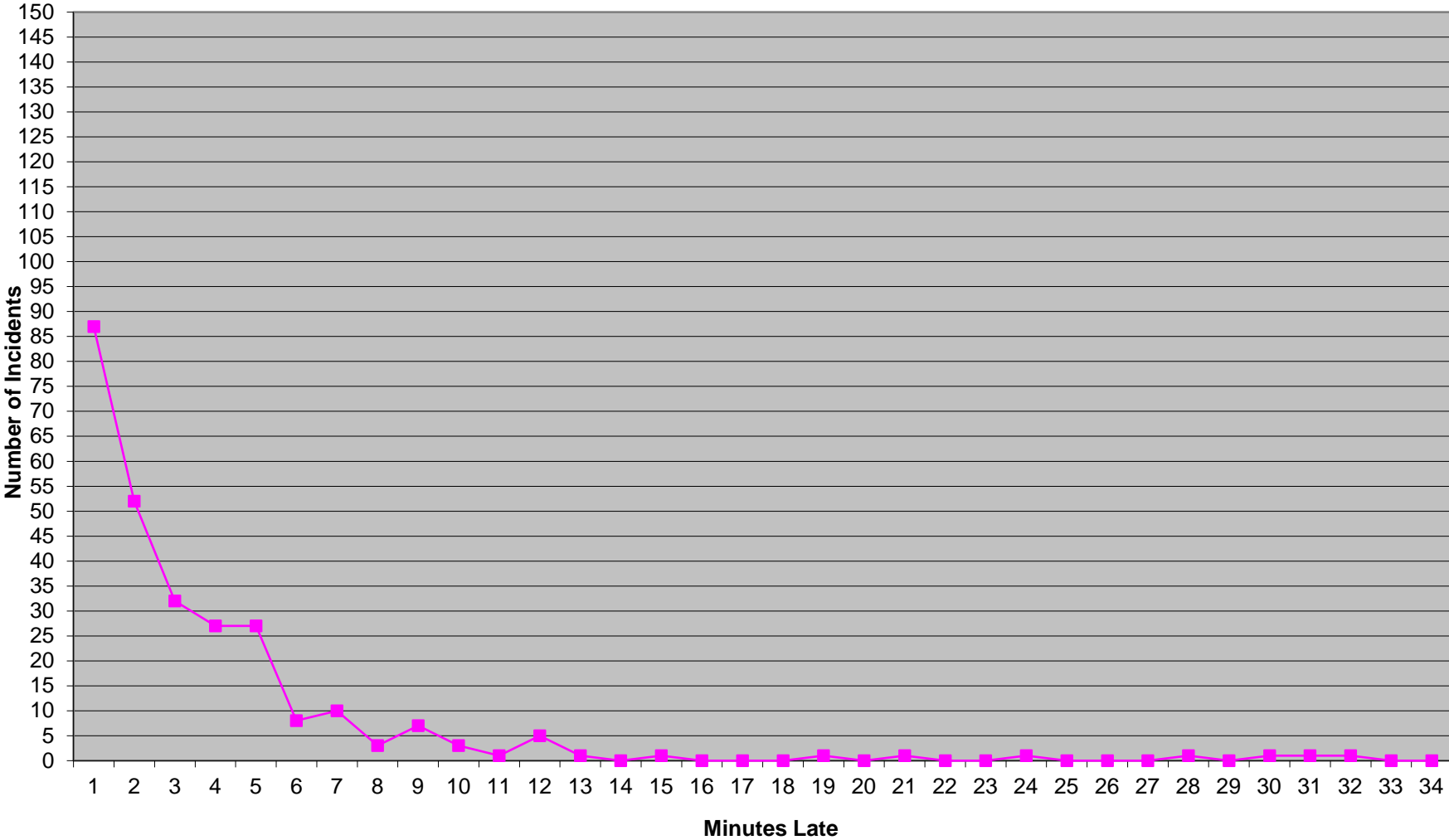
# Eastern Division Response Time Exclusions Twelve Months ending June, 2022



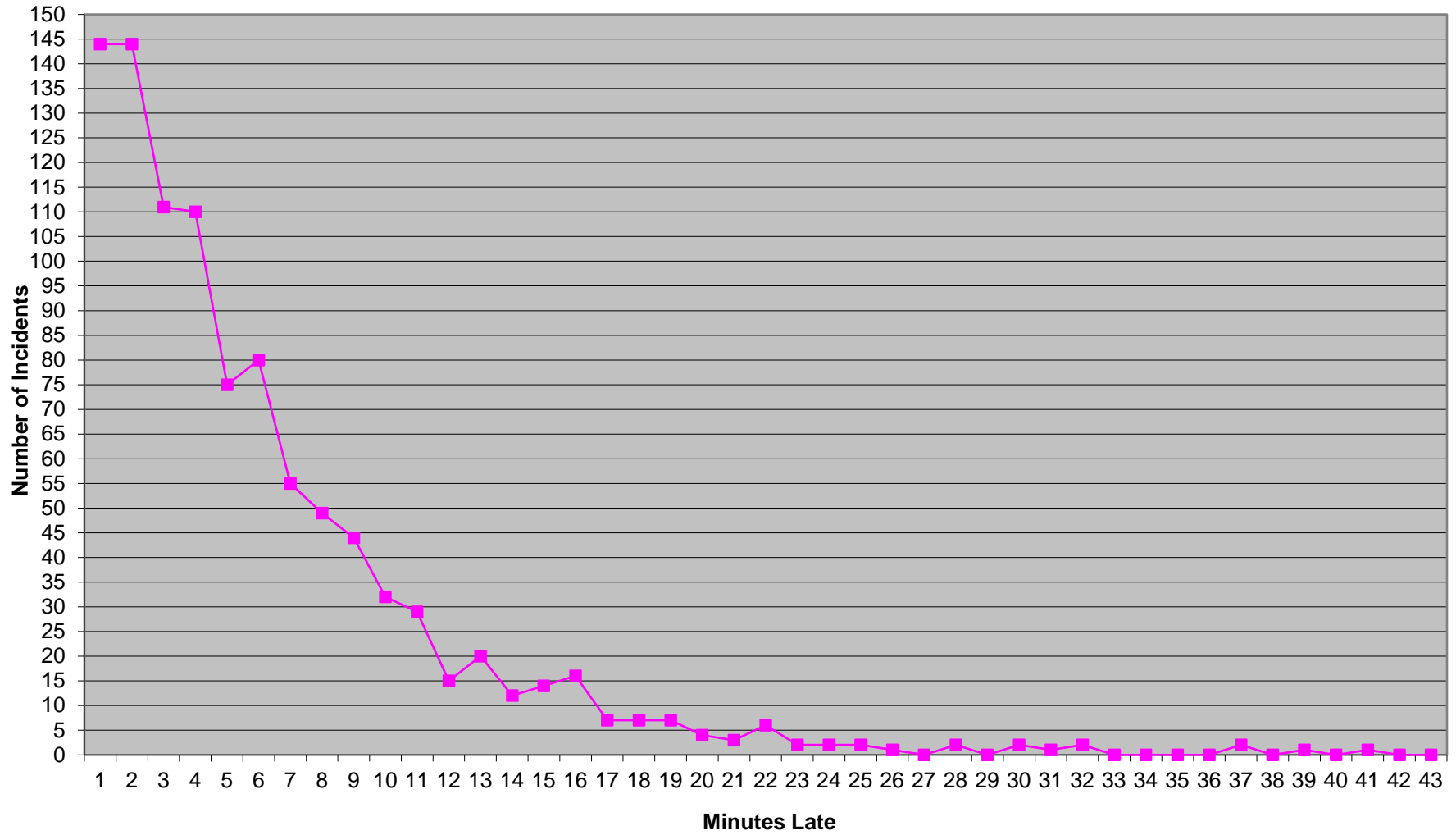
## Western Division Response Time Exclusions Twelve Months ending June, 2022



**Eastern Division Priority 1 Late Calls  
June 2022**



### Western Division Priority 1 Late Calls June 2022





# Edmond Priority 1 Late Calls June 2022

