

Operational Compliance Report

July 2021

Frank Gresh

Chief Information Officer



“To serve our communities’ pre-hospital needs through value-driven, compassionate, and clinically superior care.”

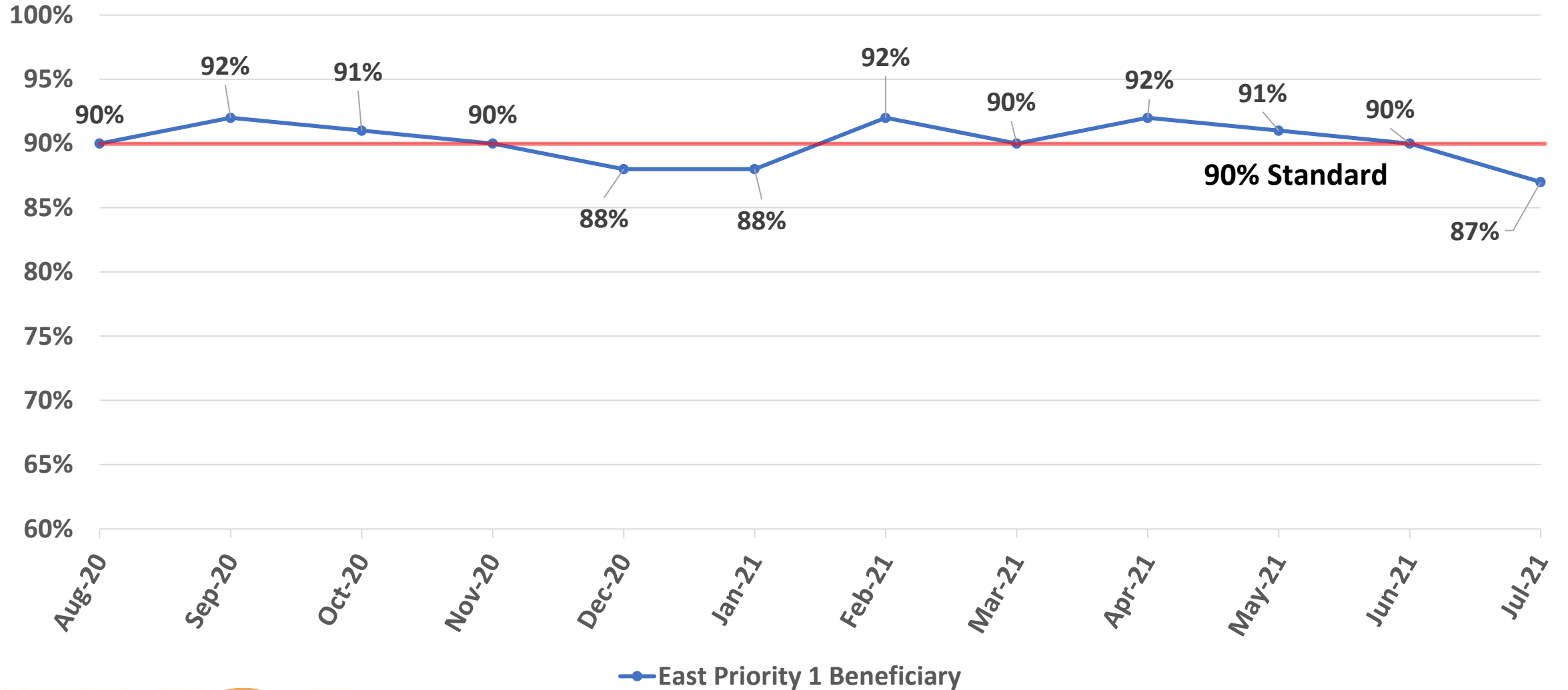
July 2021 Compliance Summary – Combined

	Priority 1	Priority 2	Priority 3	Priority 4
East Ben. Total	87%	90%	77%	88%
East NB Total	Priority 1&2	72%	N/A	N/A
West Ben. Total	58%	80%	57%	58%
West NB Total	Priority 1&2	60%	60%	100%



“To serve our communities’ pre-hospital needs through value-driven, compassionate, and clinically superior care.”

East Beneficiary Response Time Compliance

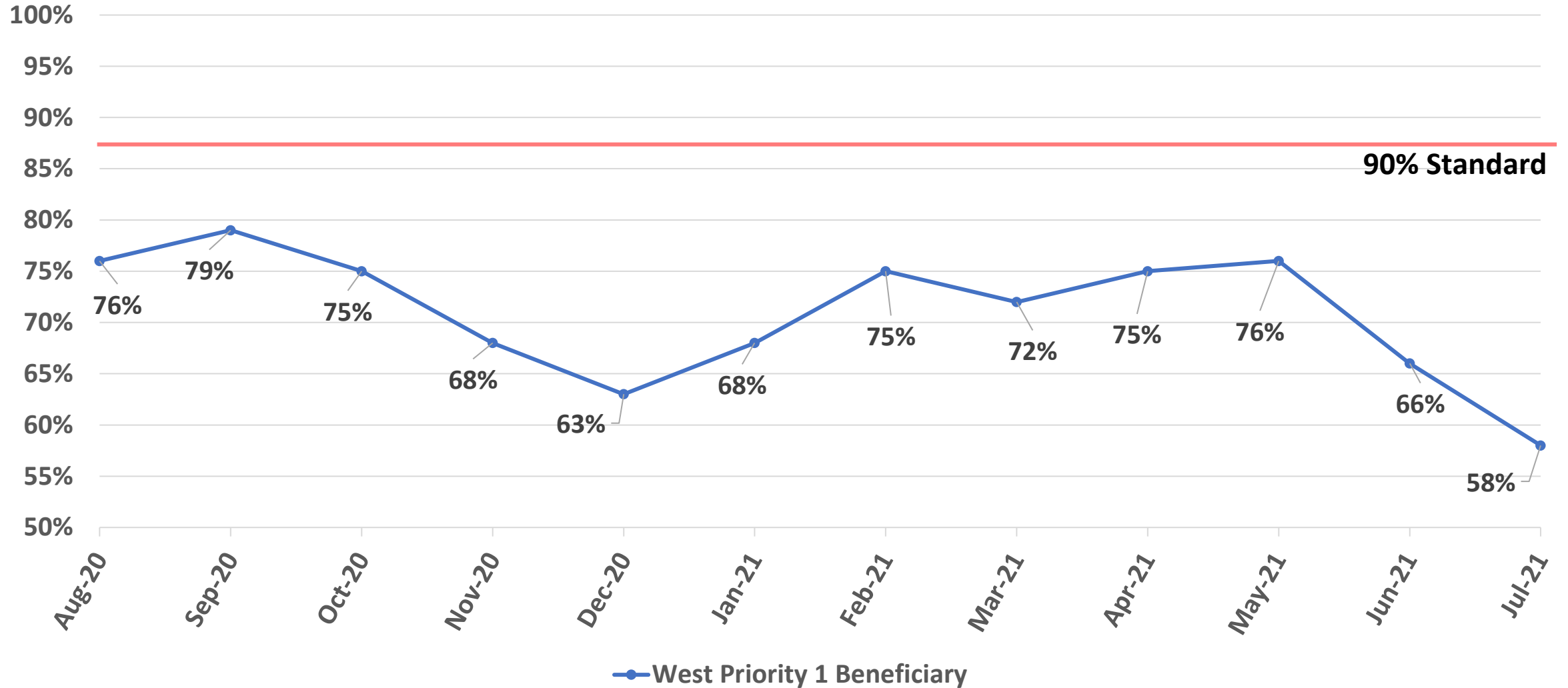


— East Priority 1 Beneficiary



“To serve our communities’ pre-hospital needs through value-driven, compassionate, and clinically superior care.”

West Beneficiary Response Time Compliance



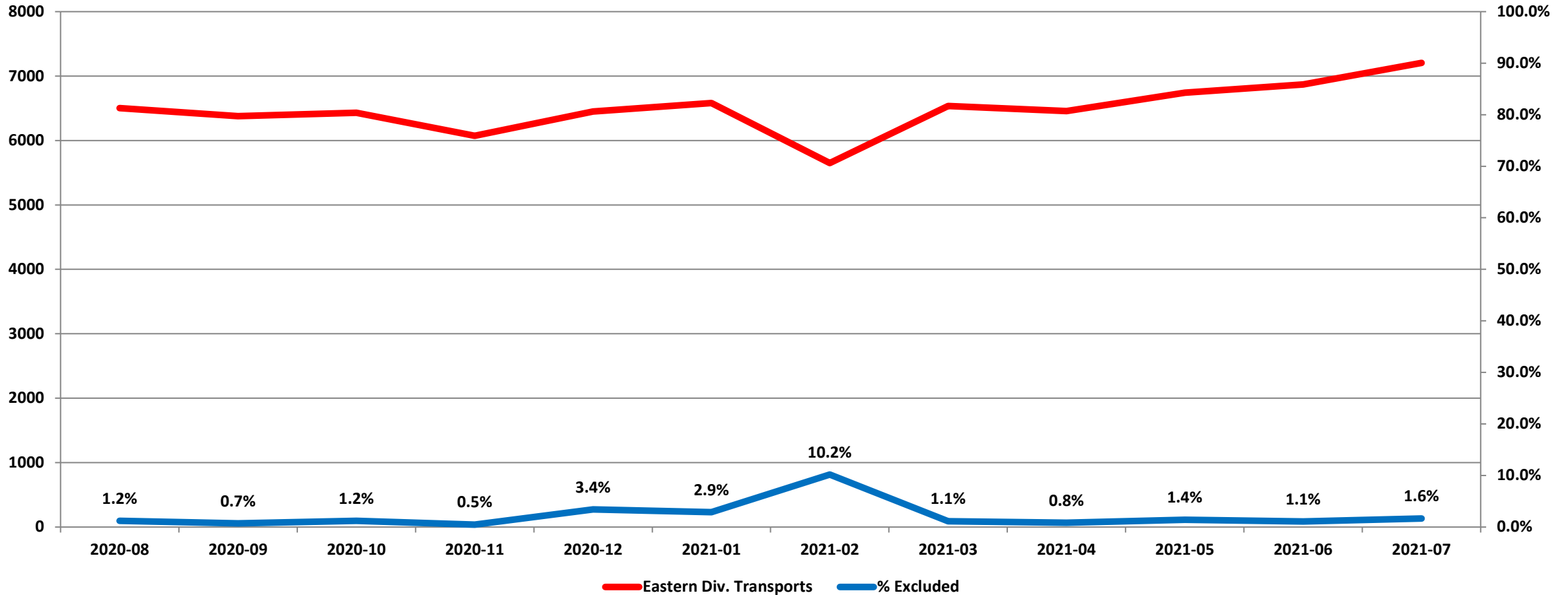
—● West Priority 1 Beneficiary



“To serve our communities’ pre-hospital needs through value-driven, compassionate, and clinically superior care.”

Exclusions

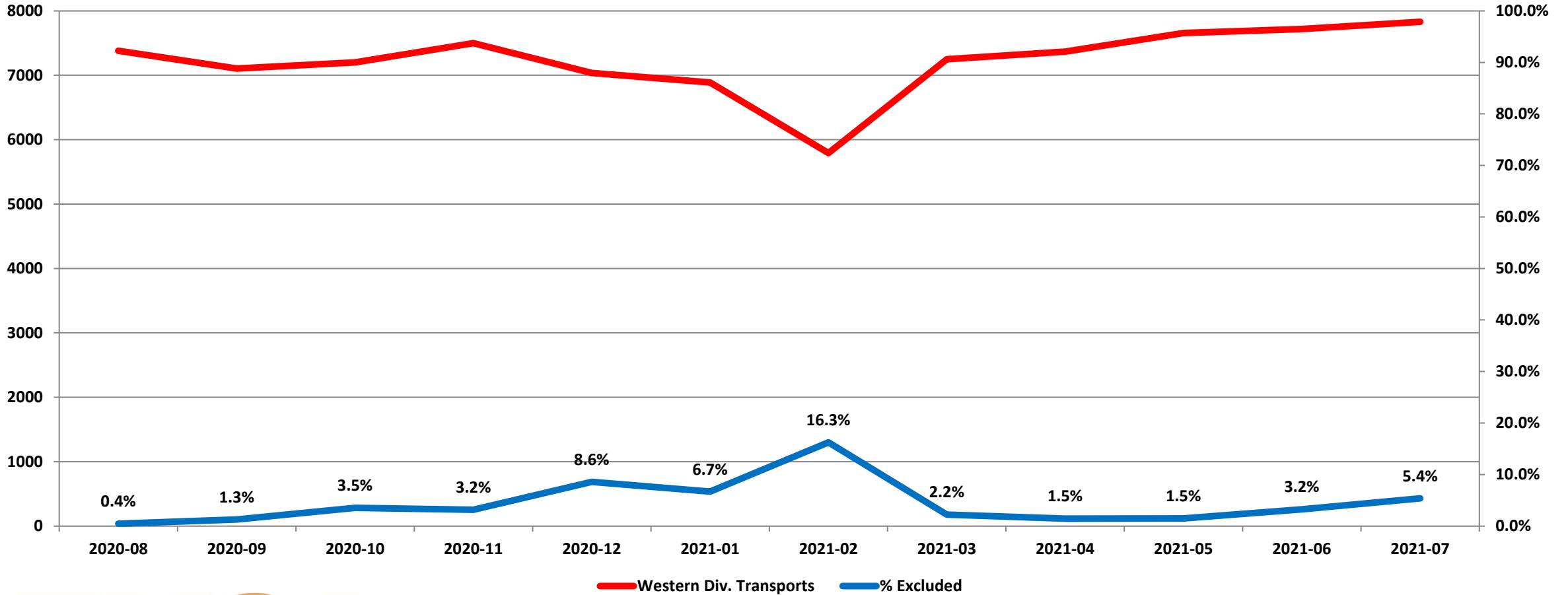
Eastern Division Response Time Exclusions Twelve Months ending July, 2021



“To serve our communities’ pre-hospital needs through value-driven, compassionate, and clinically superior care.”

Exclusions

Western Division Response Time Exclusions Twelve Months ending July, 2021



“To serve our communities’ pre-hospital needs through value-driven, compassionate, and clinically superior care.”