

Operational Compliance Report

April 2021

Frank Gresh

Chief Information Officer



“To serve our communities’ pre-hospital needs through value-driven, compassionate, and clinically superior care.”

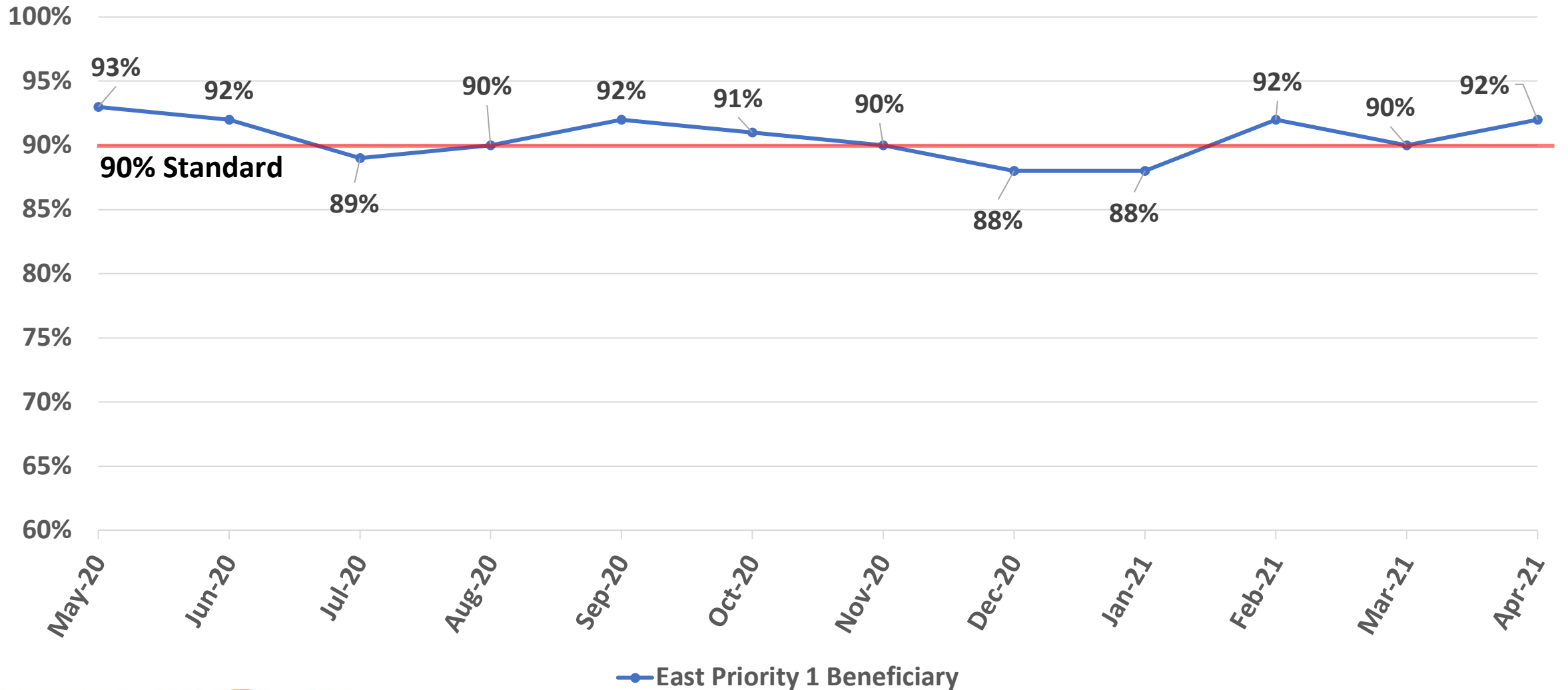
April 2021 Compliance Summary – Combined

	Priority 1	Priority 2	Priority 3	Priority 4
East Ben. Total	92%	96%	87%	100%
East NB Total	Priority 1&2	84%	100%	N/A
West Ben. Total	75%	91%	81%	72%
West NB Total	Priority 1&2	76%	41%	N/A



“To serve our communities’ pre-hospital needs through value-driven, compassionate, and clinically superior care.”

East Beneficiary Response Time Compliance

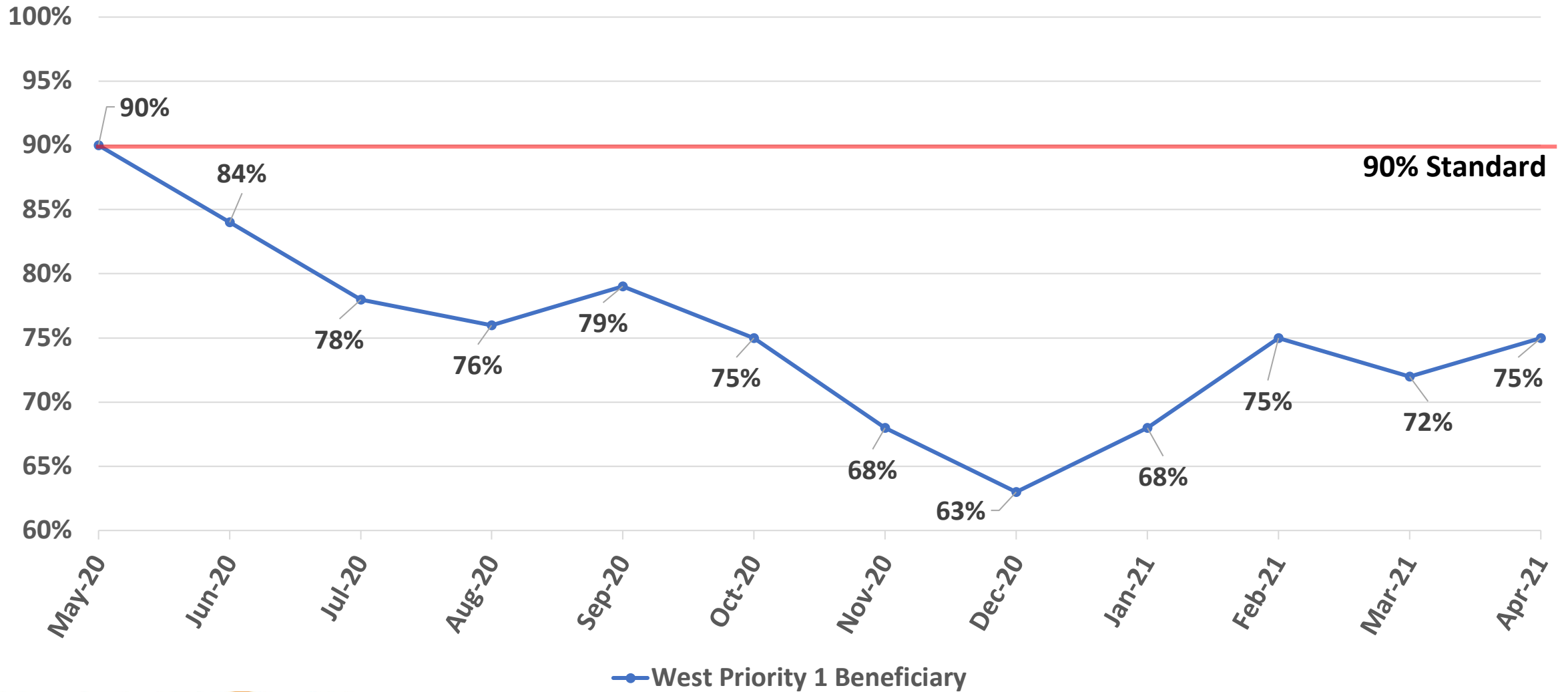


— East Priority 1 Beneficiary



“To serve our communities’ pre-hospital needs through value-driven, compassionate, and clinically superior care.”

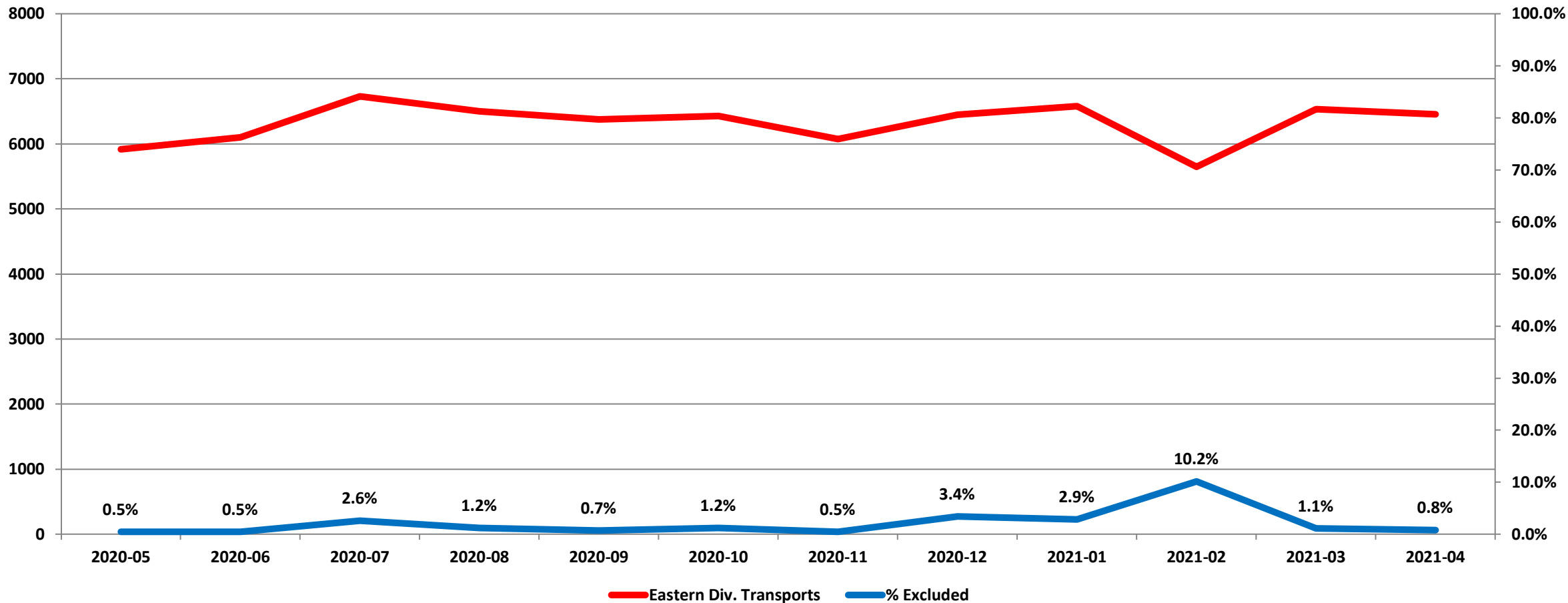
West Beneficiary Response Time Compliance



“To serve our communities’ pre-hospital needs through value-driven, compassionate, and clinically superior care.”

Exclusions

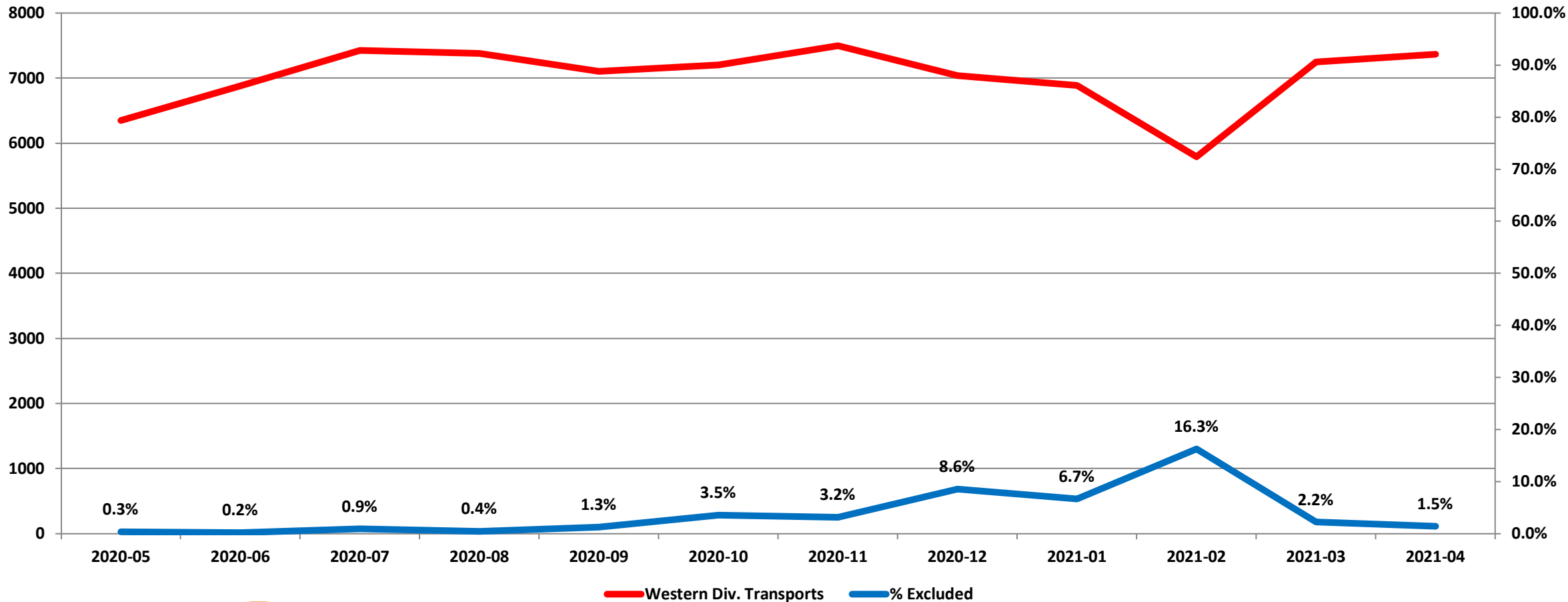
Eastern Division Response Time Exclusions Twelve Months ending April, 2021



“To serve our communities’ pre-hospital needs through value-driven, compassionate, and clinically superior care.”

Exclusions

Western Division Response Time Exclusions Twelve Months ending April, 2021



“To serve our communities’ pre-hospital needs through value-driven, compassionate, and clinically superior care.”