

# Patient Financial Services

## March 2021

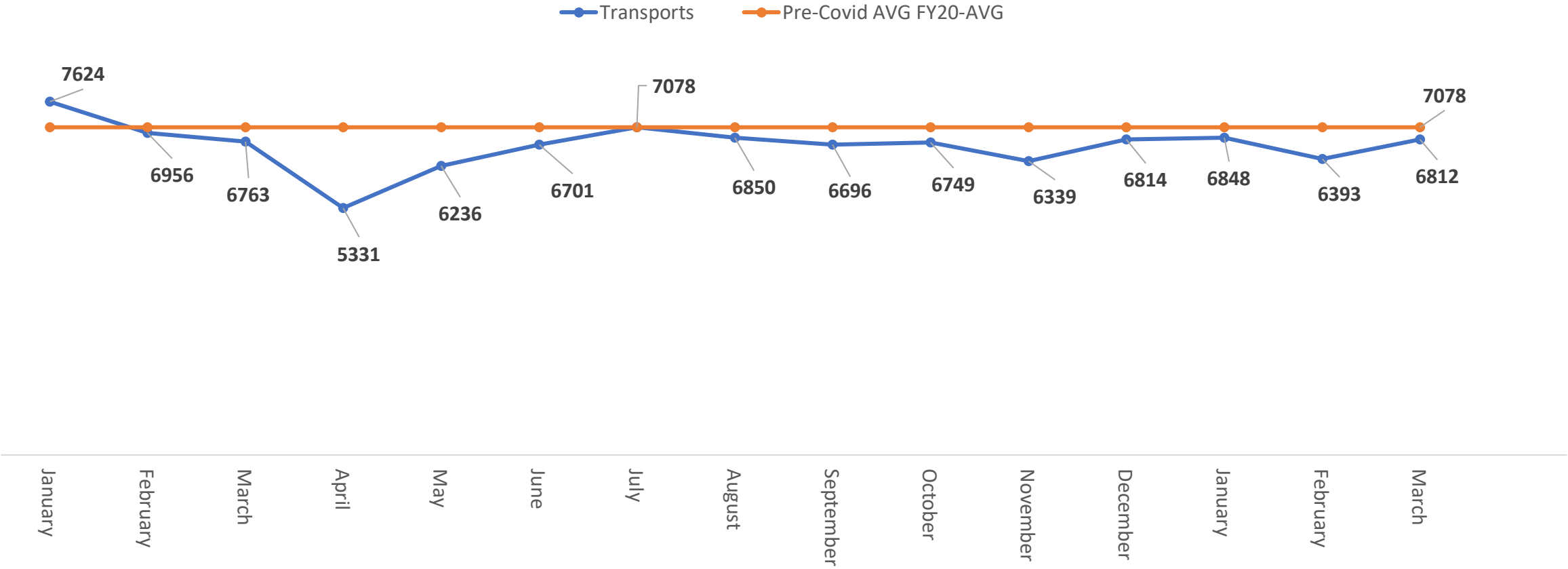
*Angela McLain-Johnson, MA, RHIA*  
*Chief Compliance/Revenue Officer*



**“To serve our communities’ pre-hospital needs through value-driven, compassionate, and clinically superior care.”**

# Eastern Division Call Volume

Total Call Volume

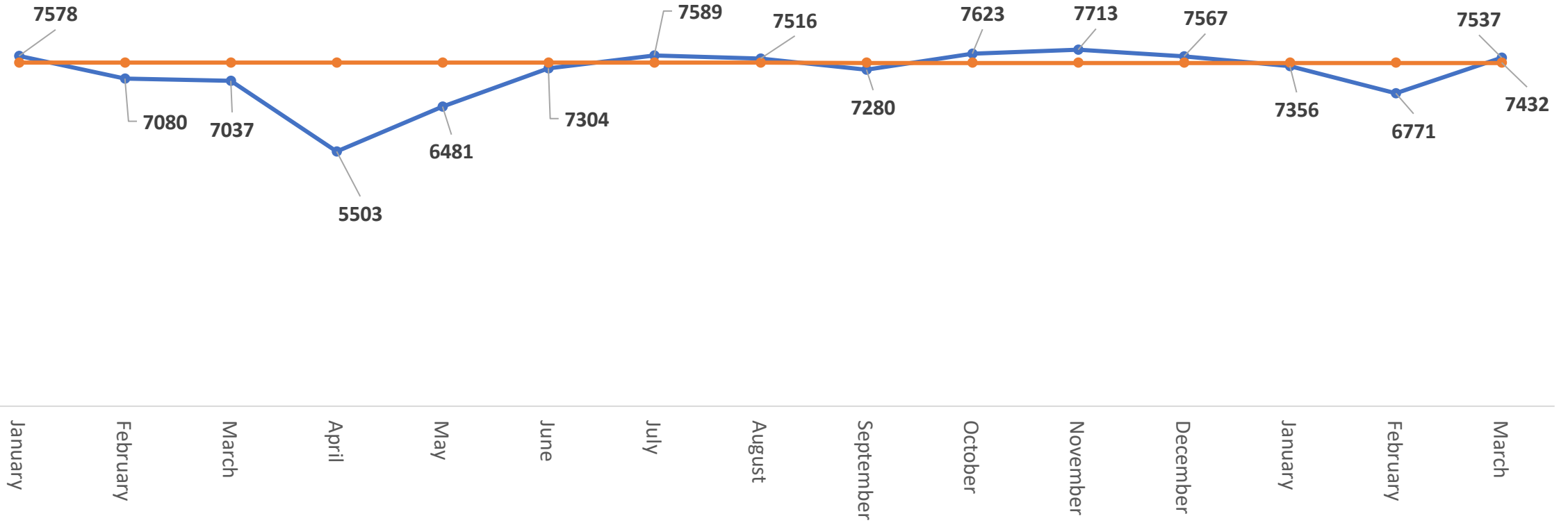


**“To serve our communities’ pre-hospital needs through value-driven, compassionate, and clinically superior care.”**

# Western Division Call Volume

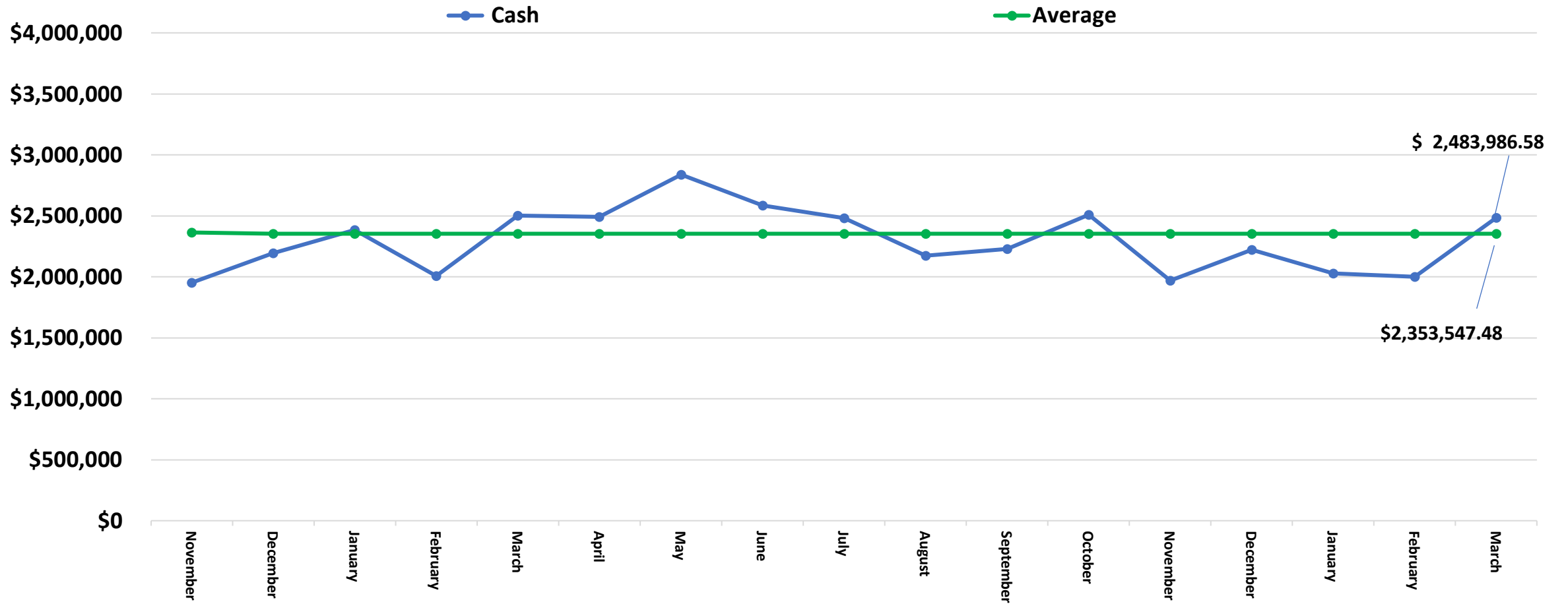
Total Call Volume

● Transports ● Pre-Covid AVG FY20-AVG



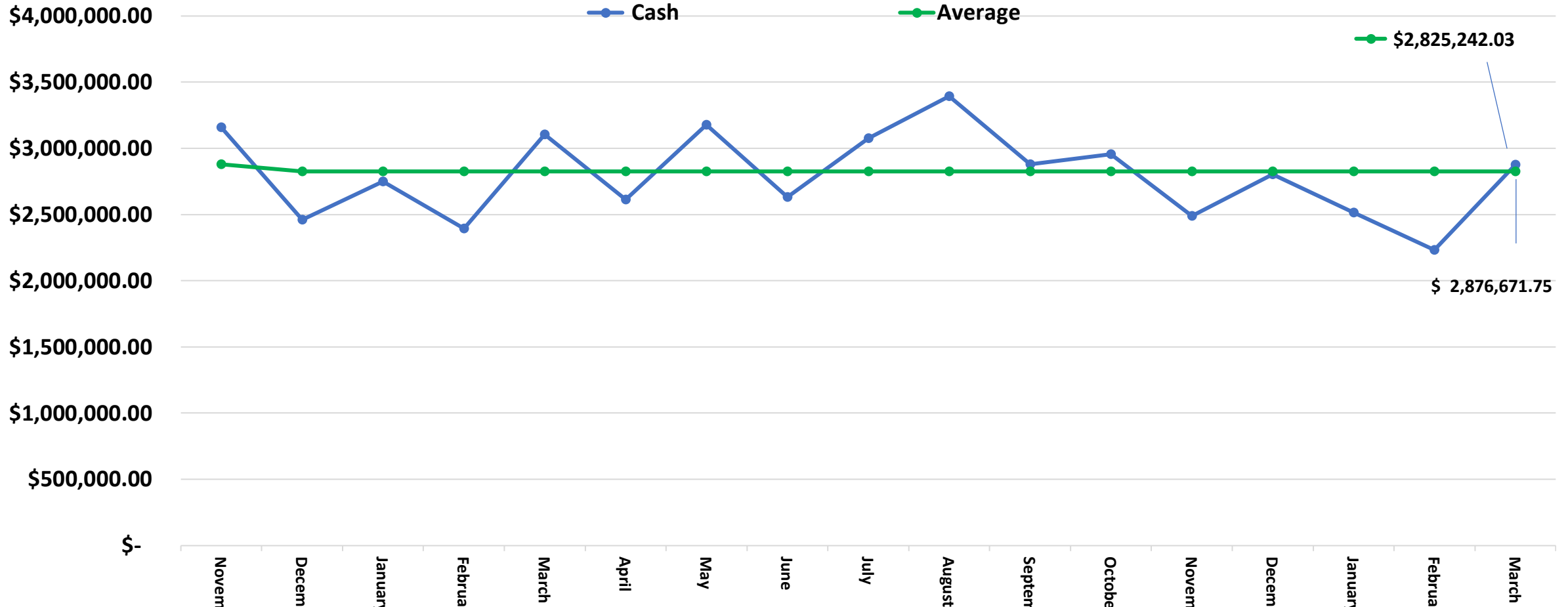
**“To serve our communities’ pre-hospital needs through value-driven, compassionate, and clinically superior care.”**

# Eastern Division Total Cash Collections



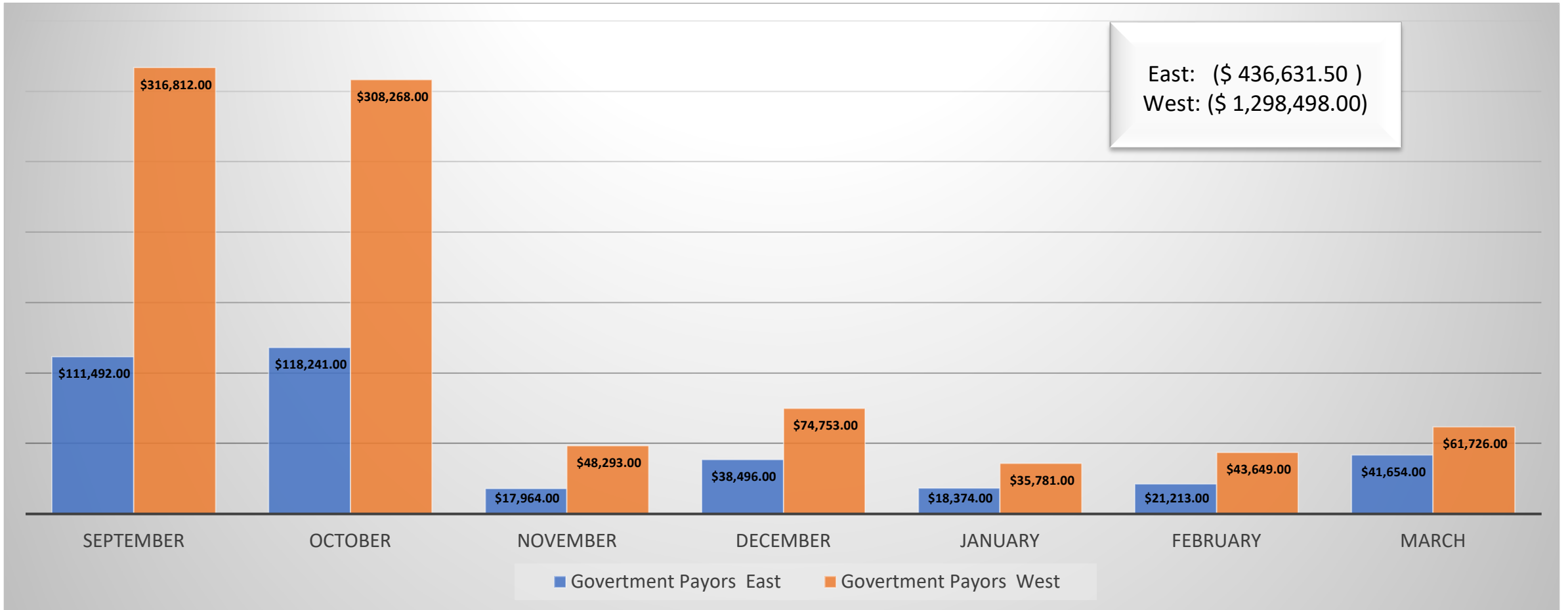
**“To serve our communities’ pre-hospital needs through value-driven, compassionate, and clinically superior care.”**

# Western Division Total Cash Collections



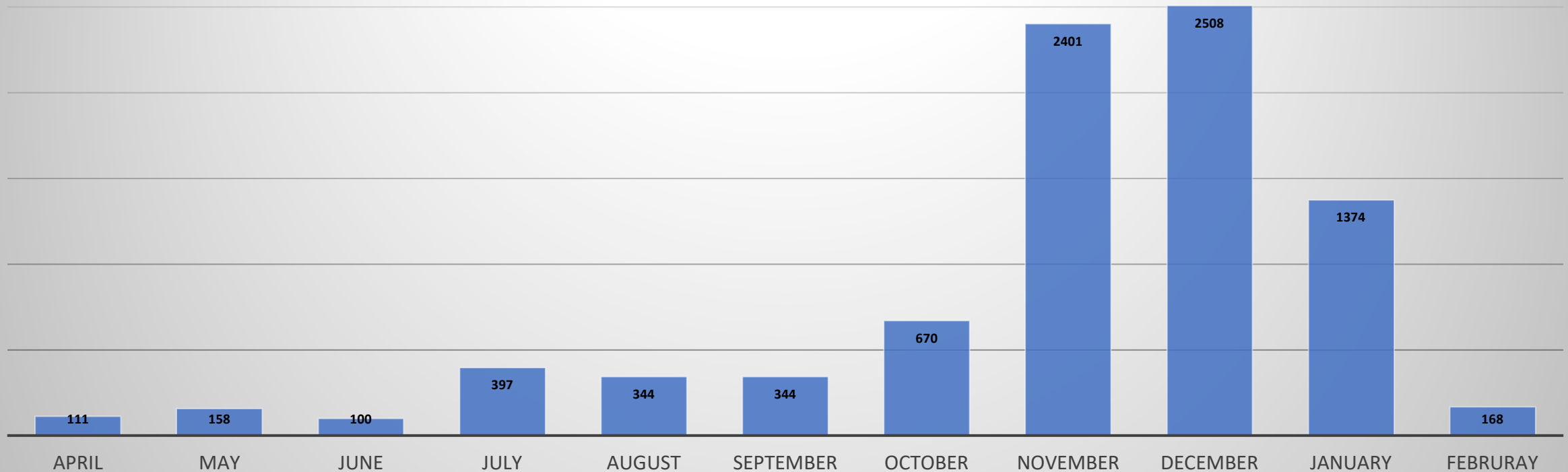
**“To serve our communities’ pre-hospital needs through value-driven, compassionate, and clinically superior care.”**

# VA Payment Concerns Eastern and Western Division



**“To serve our communities’ pre-hospital needs through value-driven, compassionate, and clinically superior care.”**

# Covid Confirmed Positive Transports Eastern and Western Division

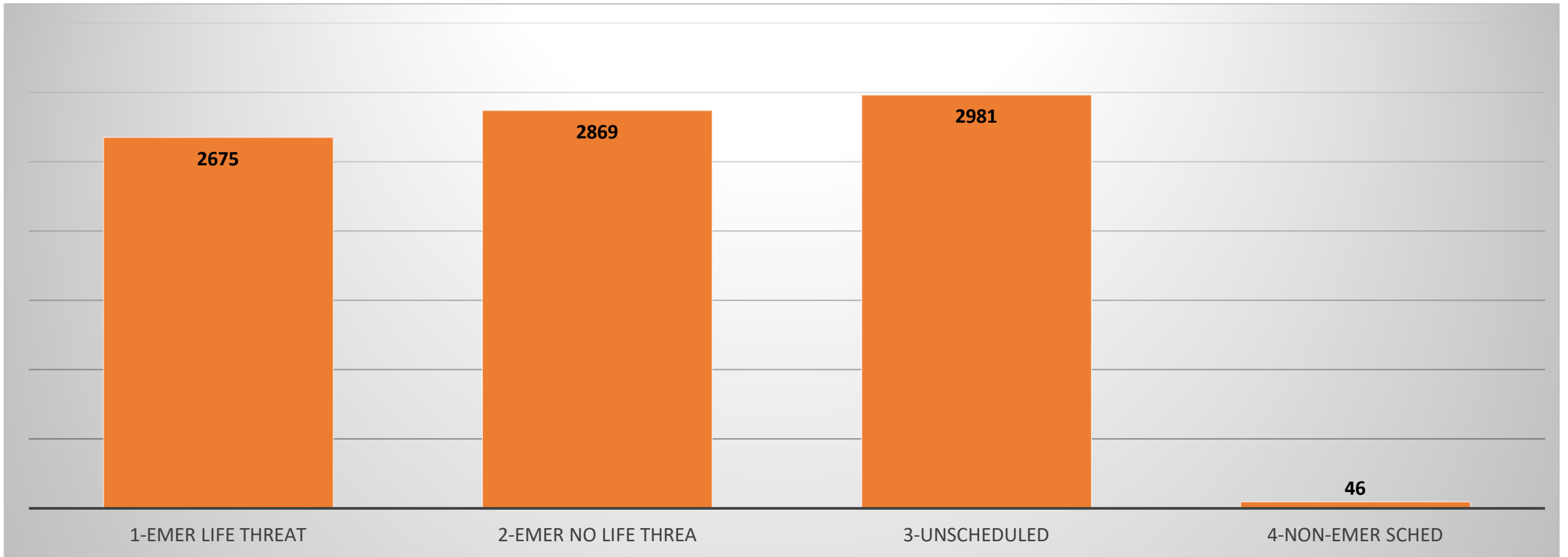


**Total Transports: 8,575 through 2021**



**“To serve our communities’ pre-hospital needs through value-driven, compassionate, and clinically superior care.”**

# Covid Confirmed Positive Transports-Call Type Eastern and Western Division



Total Transports: 8,575 through 2/2021



**“To serve our communities’ pre-hospital needs through value-driven, compassionate, and clinically superior care.”**