

Operational Compliance Report

March 2021

Frank Gresh

Chief Information Officer



“To serve our communities’ pre-hospital needs through value-driven, compassionate, and clinically superior care.”

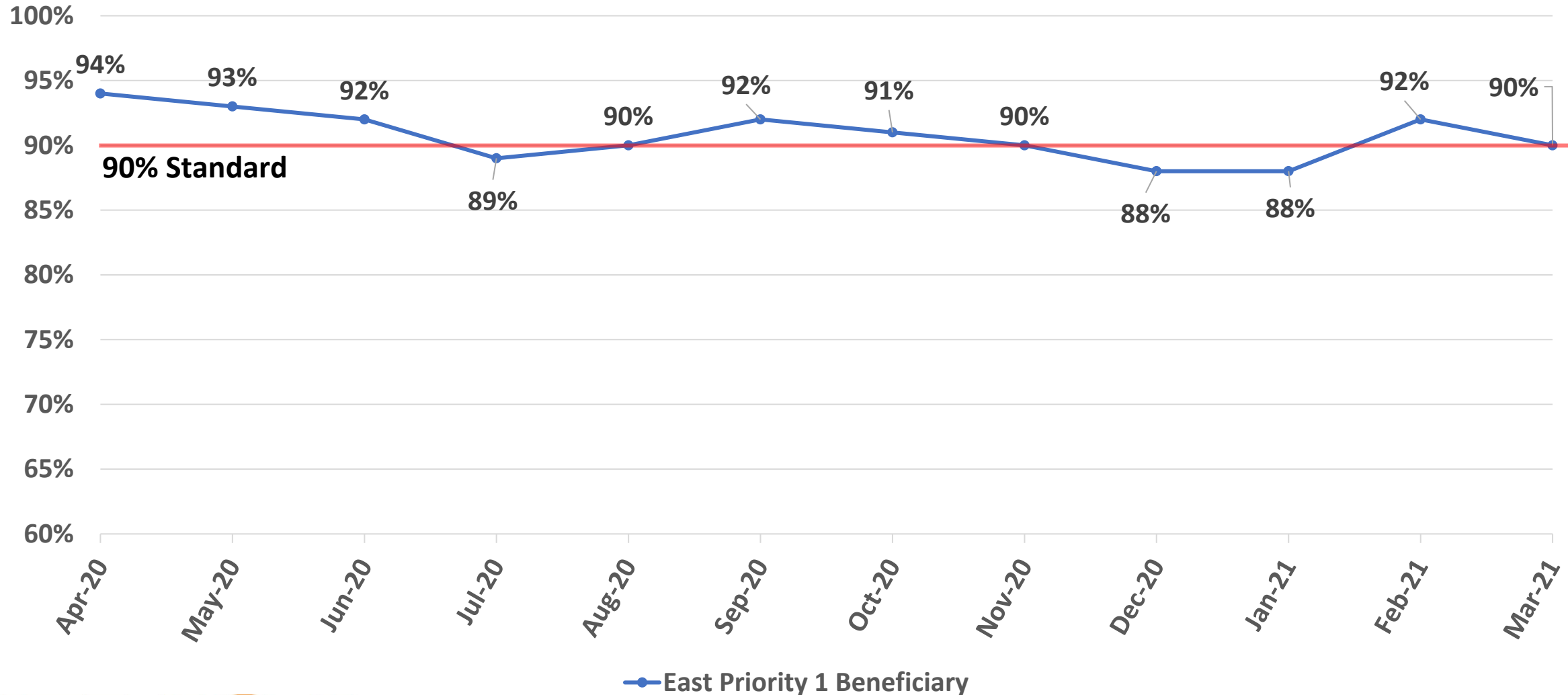
March 2021 Compliance Summary – Combined

	Priority 1	Priority 2	Priority 3	Priority 4
East Ben. Total	90%	95%	79%	75%
East NB Total	Priority 1&2	82%	100%	N/A
West Ben. Total	72%	90%	69%	72%
West NB Total	Priority 1&2	69%	57%	N/A



“To serve our communities’ pre-hospital needs through value-driven, compassionate, and clinically superior care.”

East Beneficiary Response Time Compliance

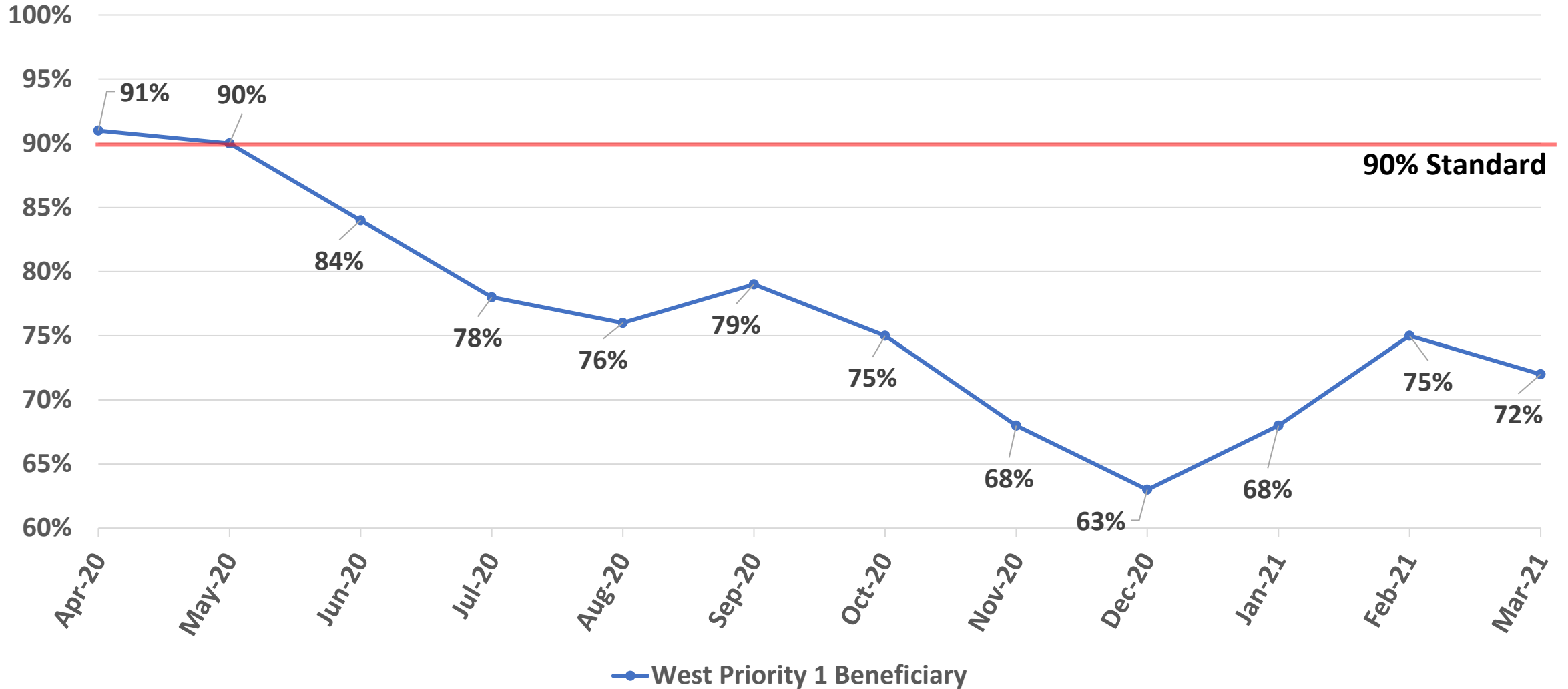


— East Priority 1 Beneficiary



“To serve our communities’ pre-hospital needs through value-driven, compassionate, and clinically superior care.”

West Beneficiary Response Time Compliance



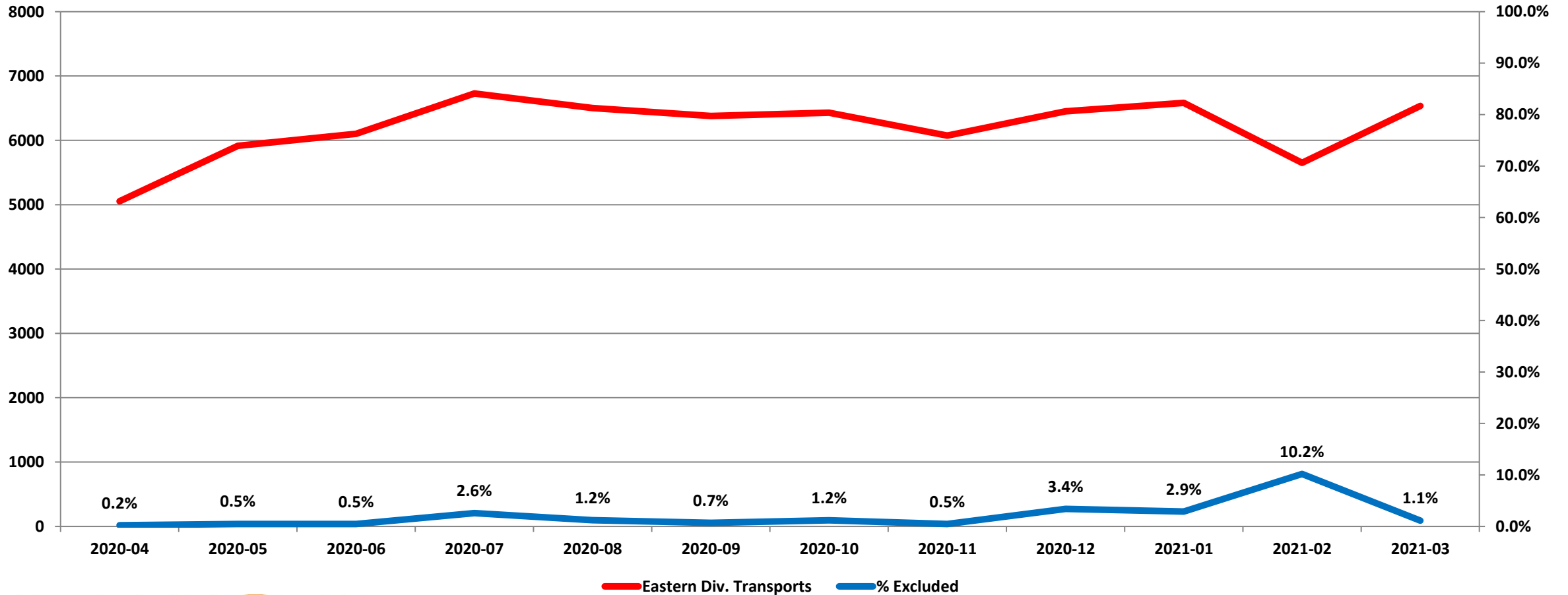
—● West Priority 1 Beneficiary



“To serve our communities’ pre-hospital needs through value-driven, compassionate, and clinically superior care.”

Exclusions

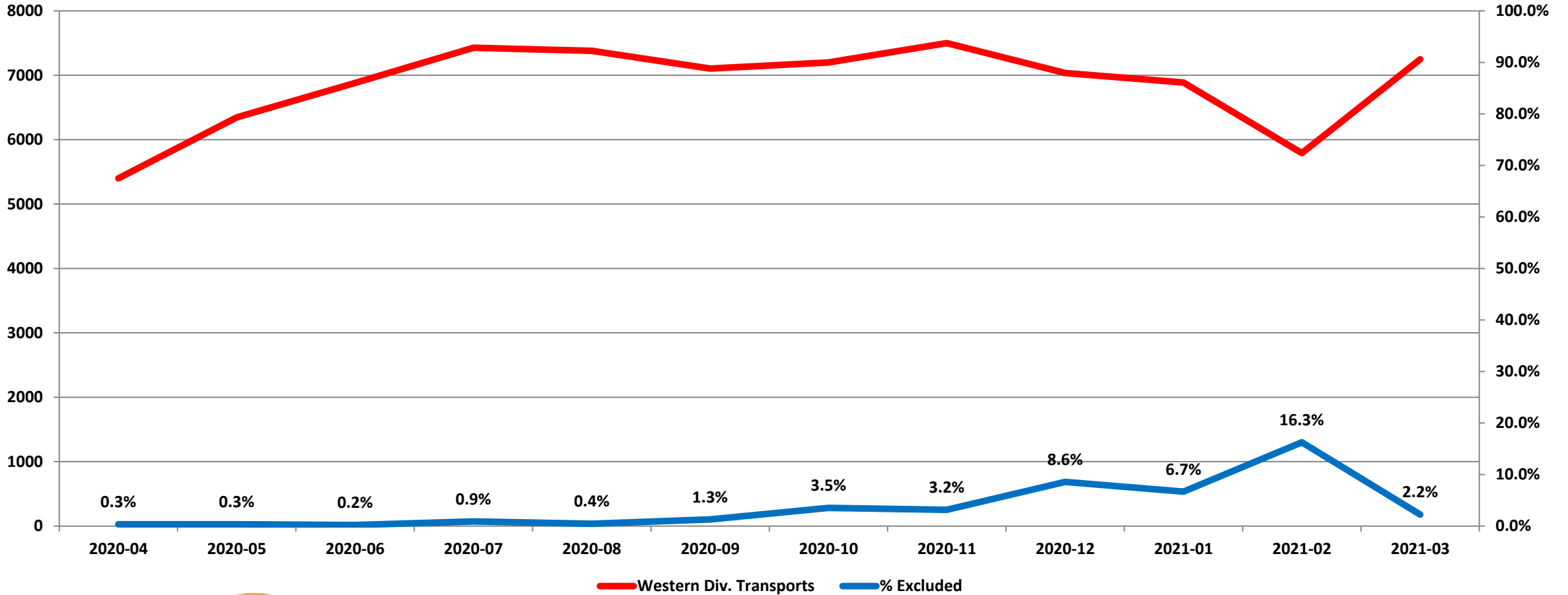
Eastern Division Response Time Exclusions Twelve Months ending March, 2021



“To serve our communities’ pre-hospital needs through value-driven, compassionate, and clinically superior care.”

Exclusions

Western Division Response Time Exclusions Twelve Months ending March, 2021



“To serve our communities’ pre-hospital needs through value-driven, compassionate, and clinically superior care.”