

Operational Compliance Report

February 2021

Frank Gresh

Chief Information Officer



“To serve our communities’ pre-hospital needs through value-driven, compassionate, and clinically superior care.”

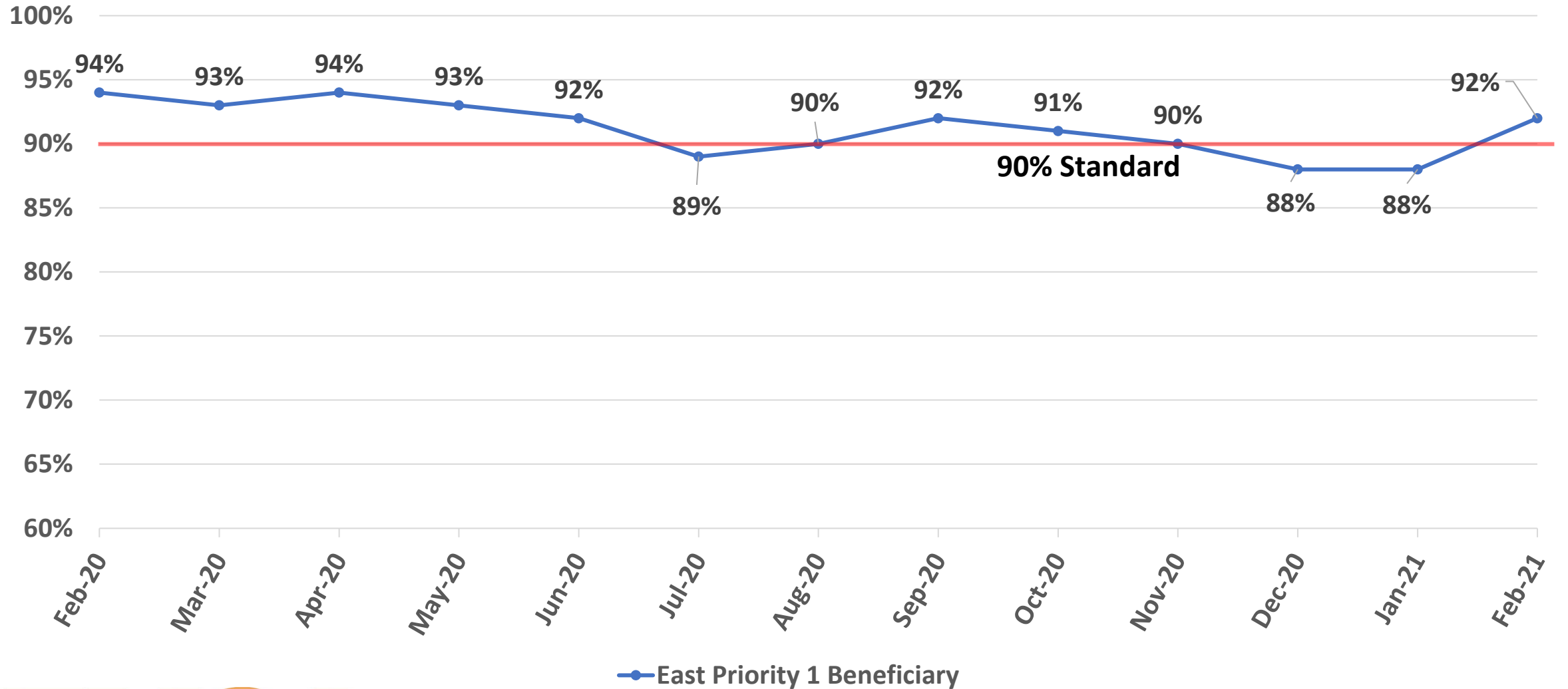
February 2021 Compliance Summary – Combined

	Priority 1	Priority 2	Priority 3	Priority 4
East Ben. Total	92%	96%	85%	95%
East NB Total	Priority 1&2	85%	100%	100%
West Ben. Total	75%	91%	71%	91%
West NB Total	Priority 1&2	75%	40%	N/A



“To serve our communities’ pre-hospital needs through value-driven, compassionate, and clinically superior care.”

East Beneficiary Response Time Compliance

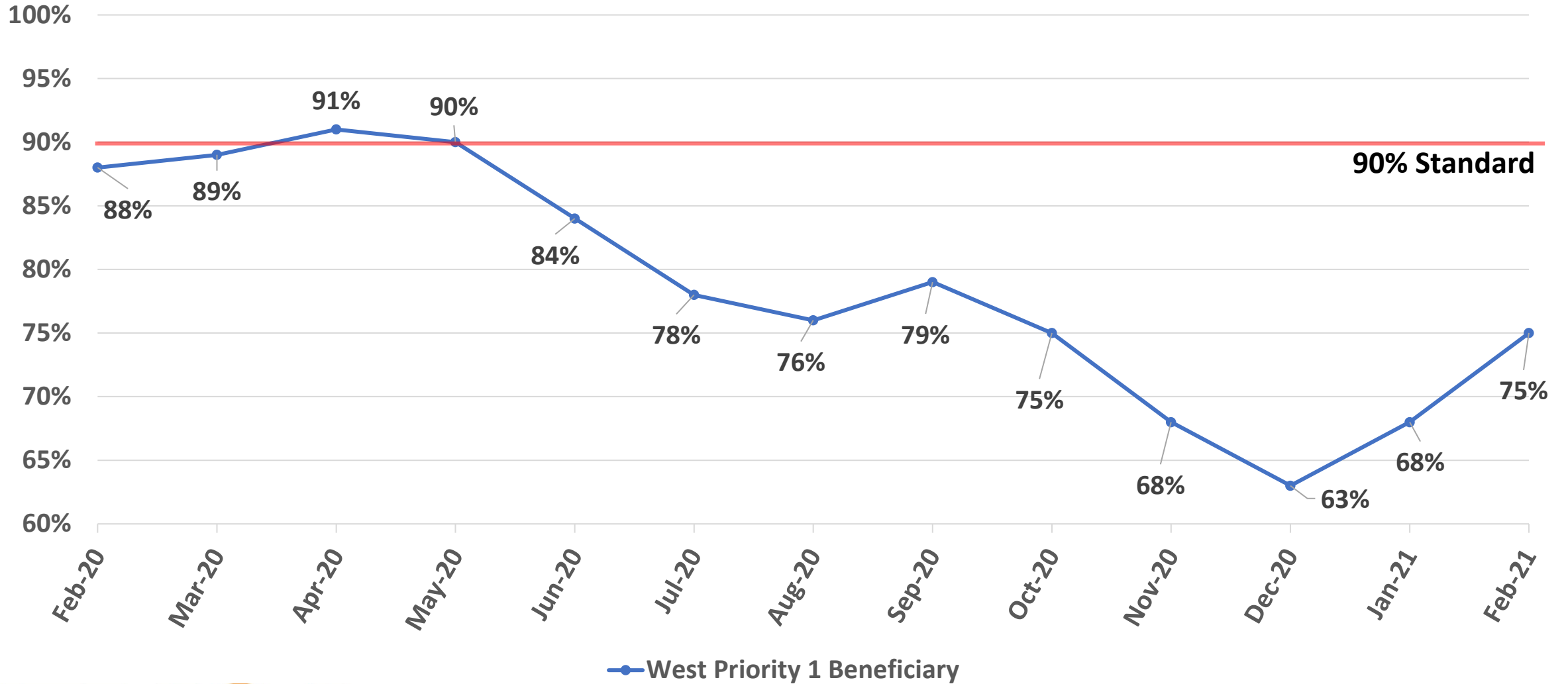


— East Priority 1 Beneficiary



“To serve our communities’ pre-hospital needs through value-driven, compassionate, and clinically superior care.”

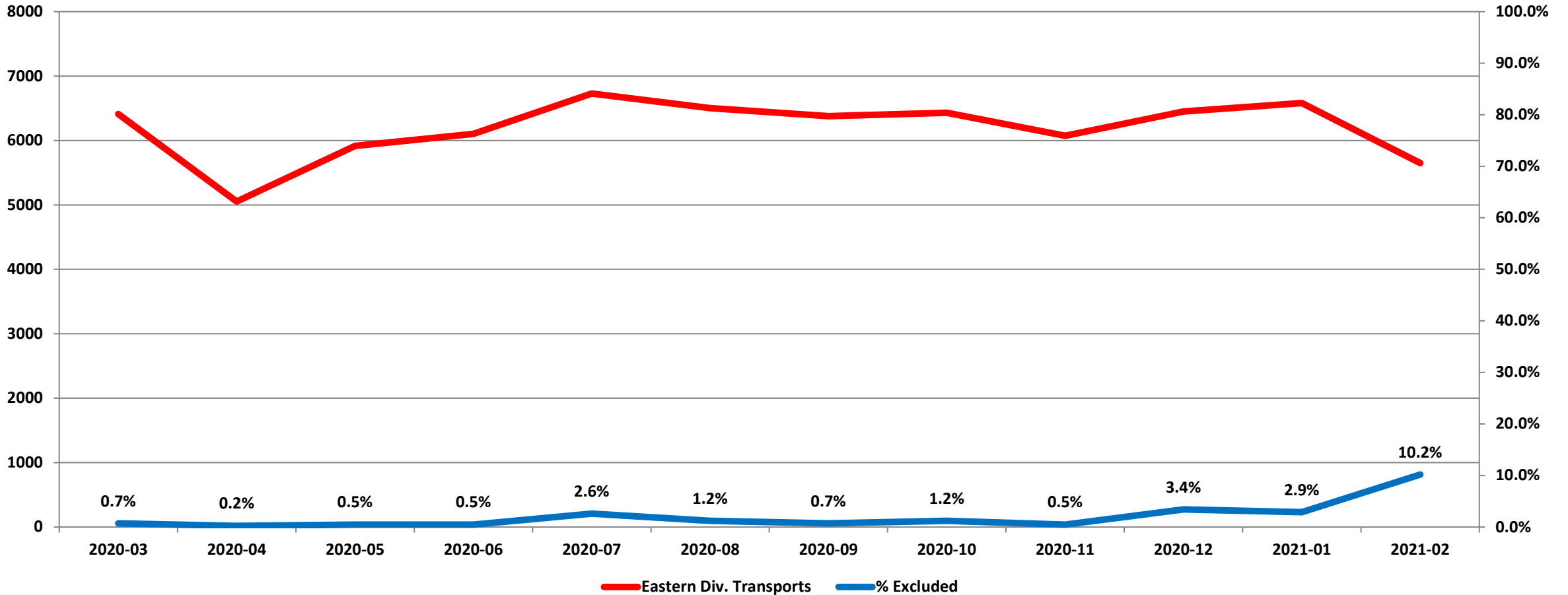
West Beneficiary Response Time Compliance



“To serve our communities’ pre-hospital needs through value-driven, compassionate, and clinically superior care.”

Exclusions

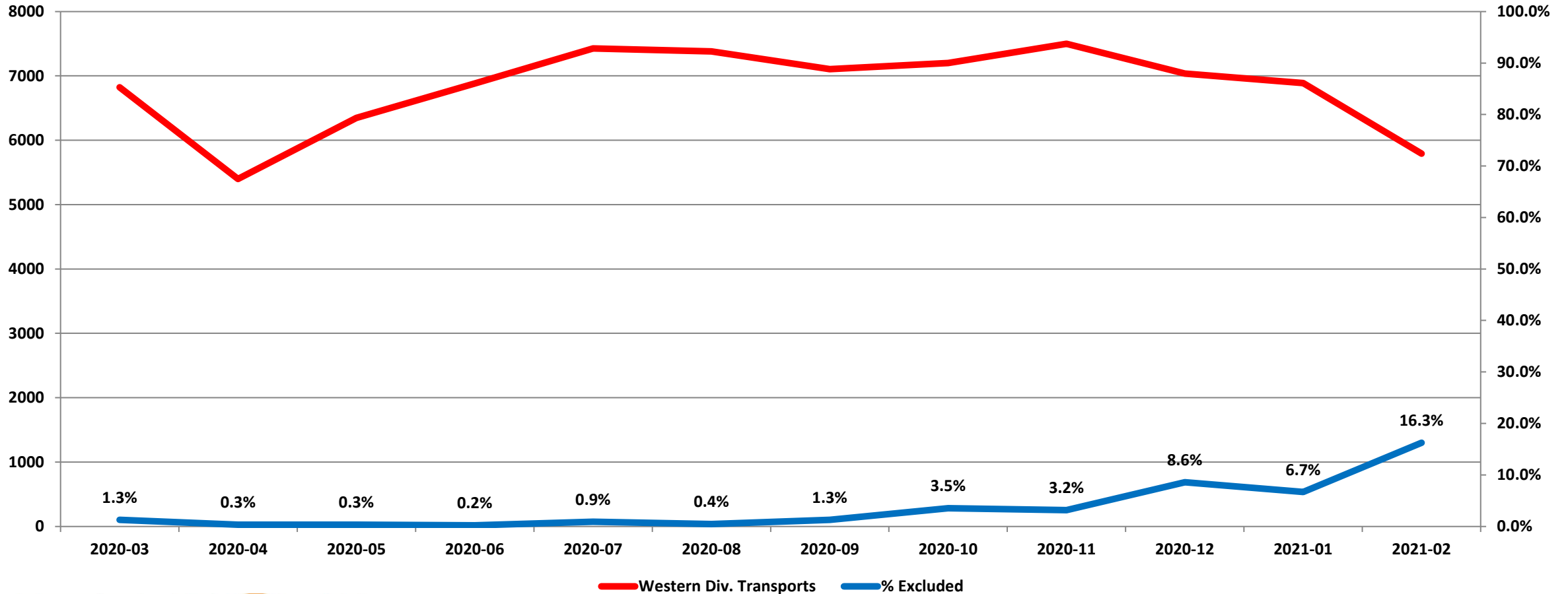
Eastern Division Response Time Exclusions Twelve Months ending February, 2021



“To serve our communities’ pre-hospital needs through value-driven, compassionate, and clinically superior care.”

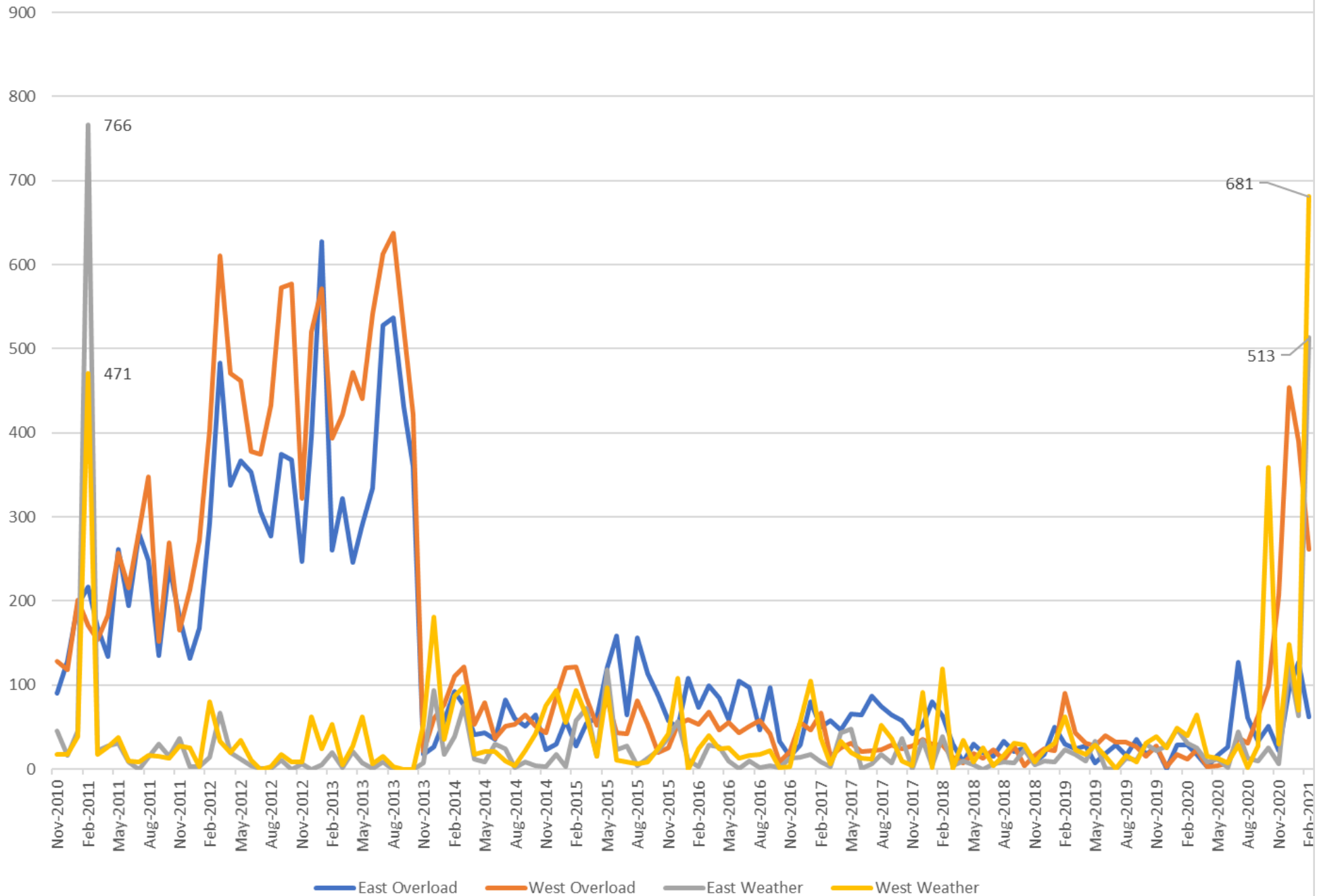
Exclusions

Western Division Response Time Exclusions Twelve Months ending February, 2021

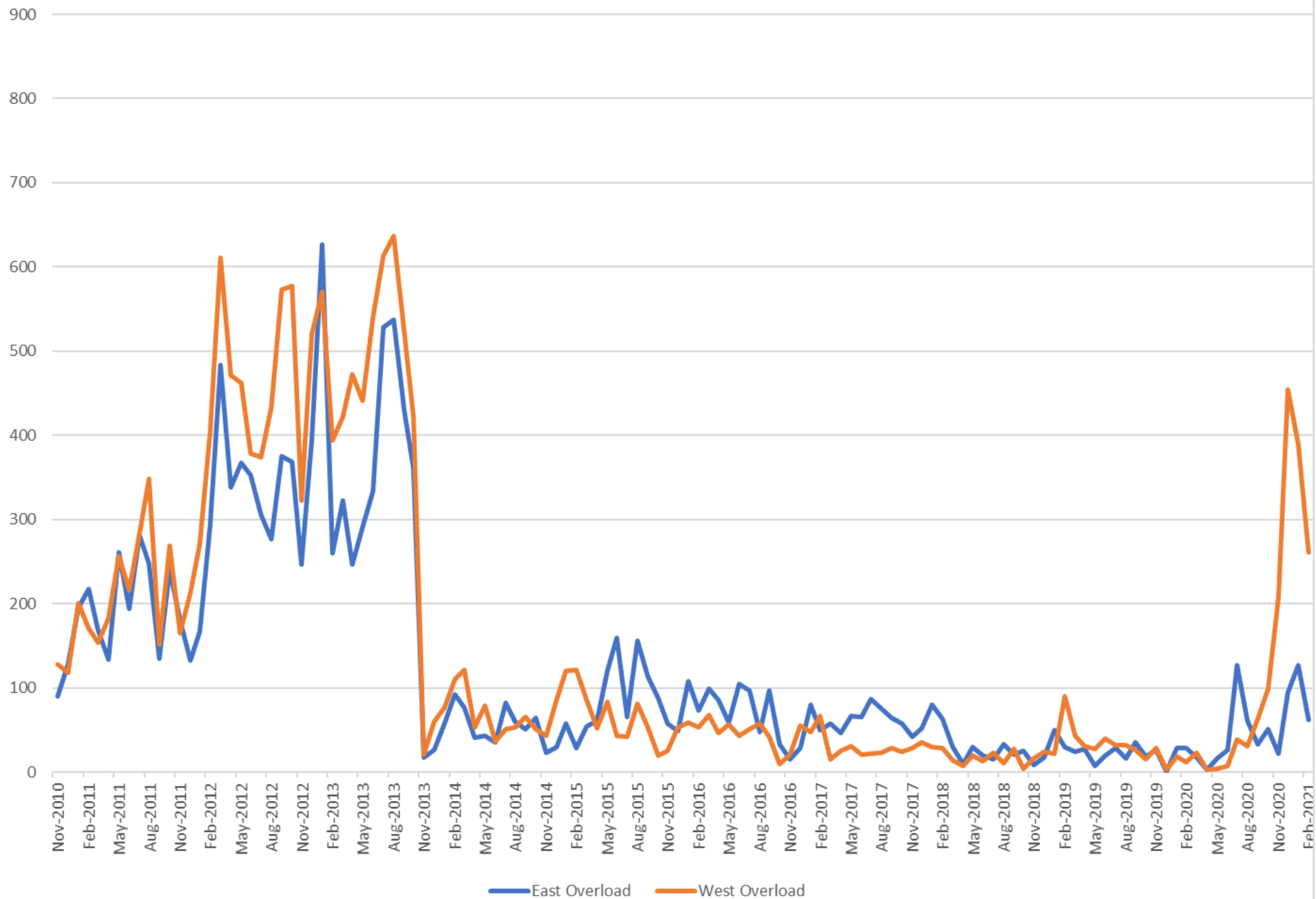


“To serve our communities’ pre-hospital needs through value-driven, compassionate, and clinically superior care.”

Volume of Exclusions Over Time



Volume of Overload Exclusions Over Time



Volume of Weather Exclusions Over Time

