

Patient Business Services

January 2021

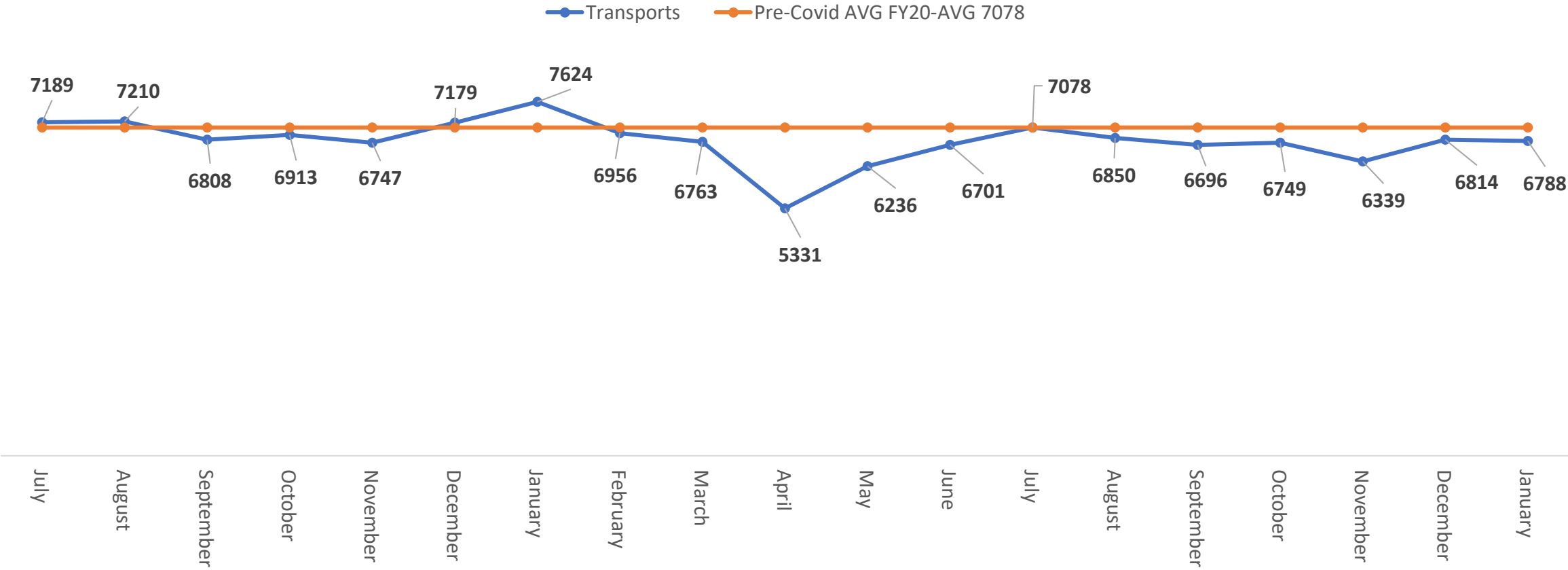
Angela McLain-Johnson, MA, RHIA
Chief Compliance/Revenue Officer



“To serve our communities’ pre-hospital needs through value-driven, compassionate, and clinically superior care.”

Eastern Division Call Volume

Total Call Volume

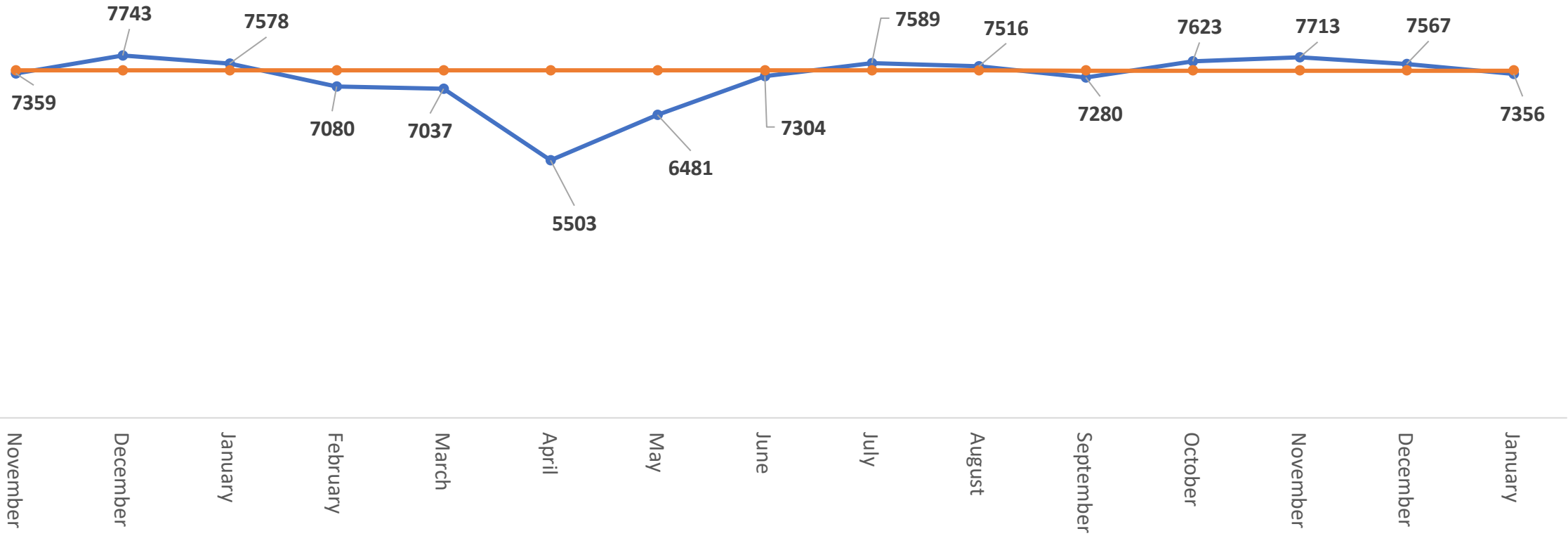


“To serve our communities’ pre-hospital needs through value-driven, compassionate, and clinically superior care.”

Western Division Call Volume

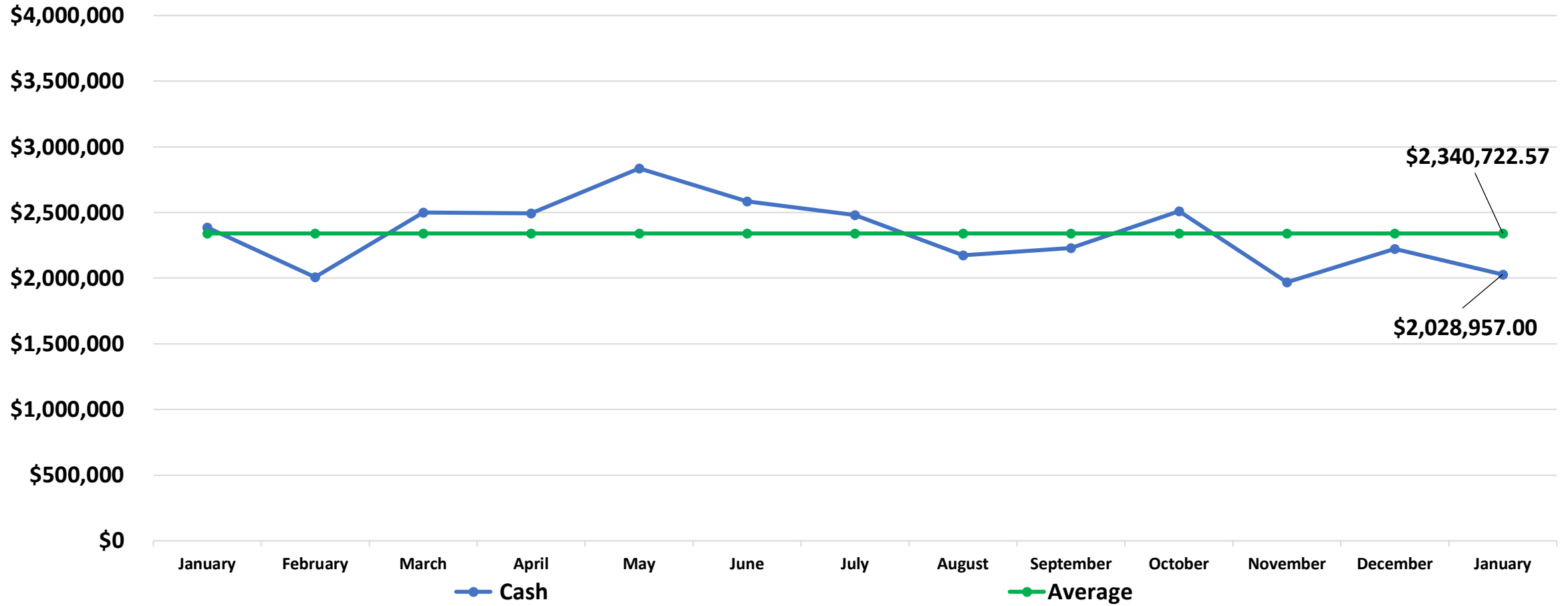
Total Call Volume

—●— Transports —●— Pre-Covid AVG FY20-AVG 7431



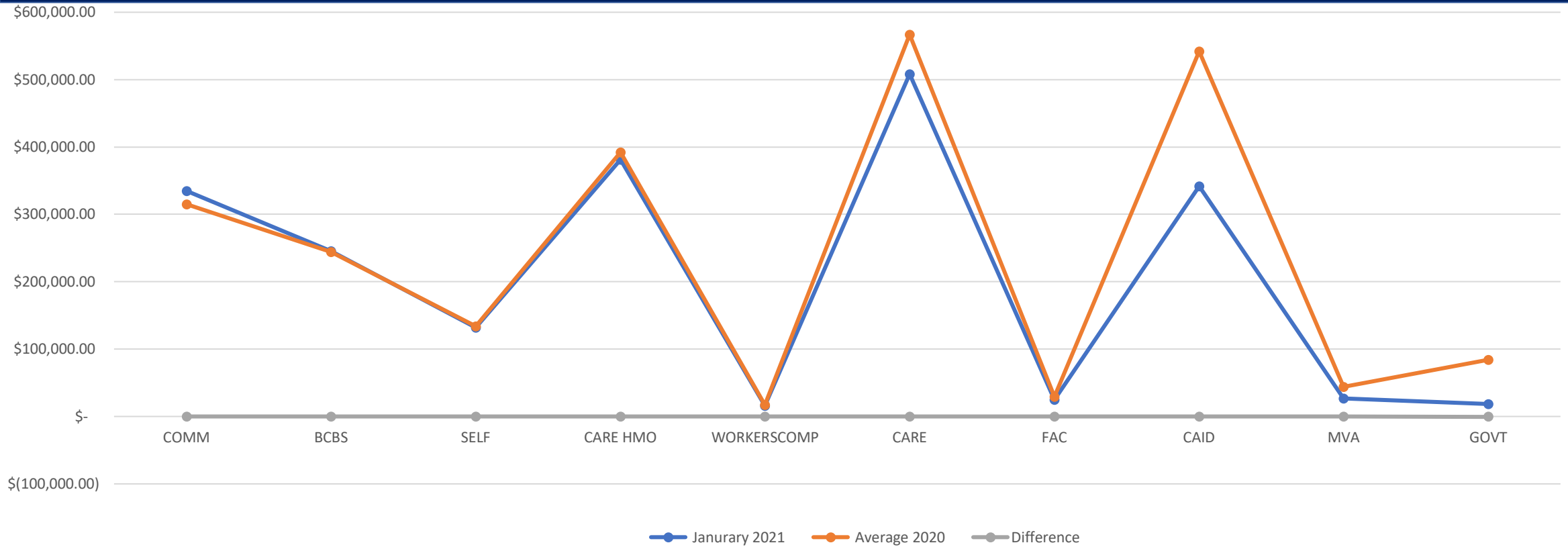
“To serve our communities’ pre-hospital needs through value-driven, compassionate, and clinically superior care.”

Eastern Division Total Cash Collections



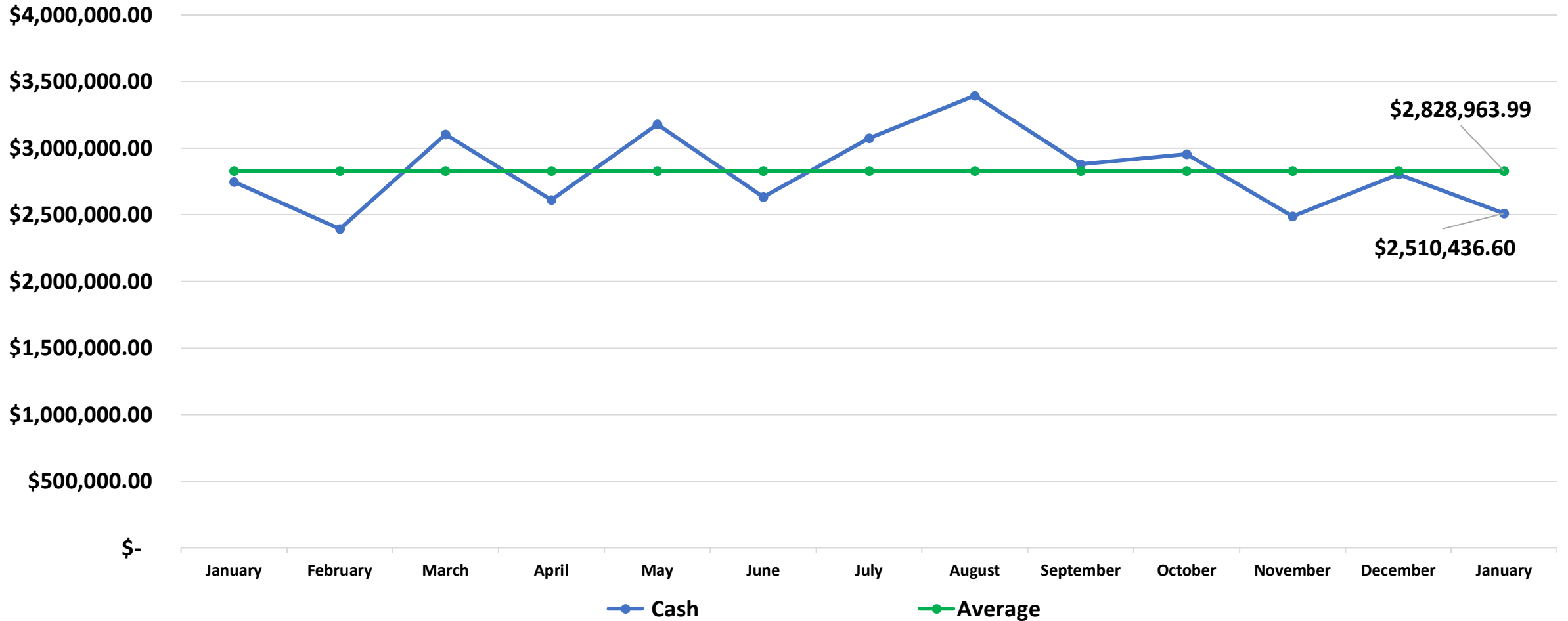
“To serve our communities’ pre-hospital needs through value-driven, compassionate, and clinically superior care.”

Eastern Division Total Cash Collections Comparison



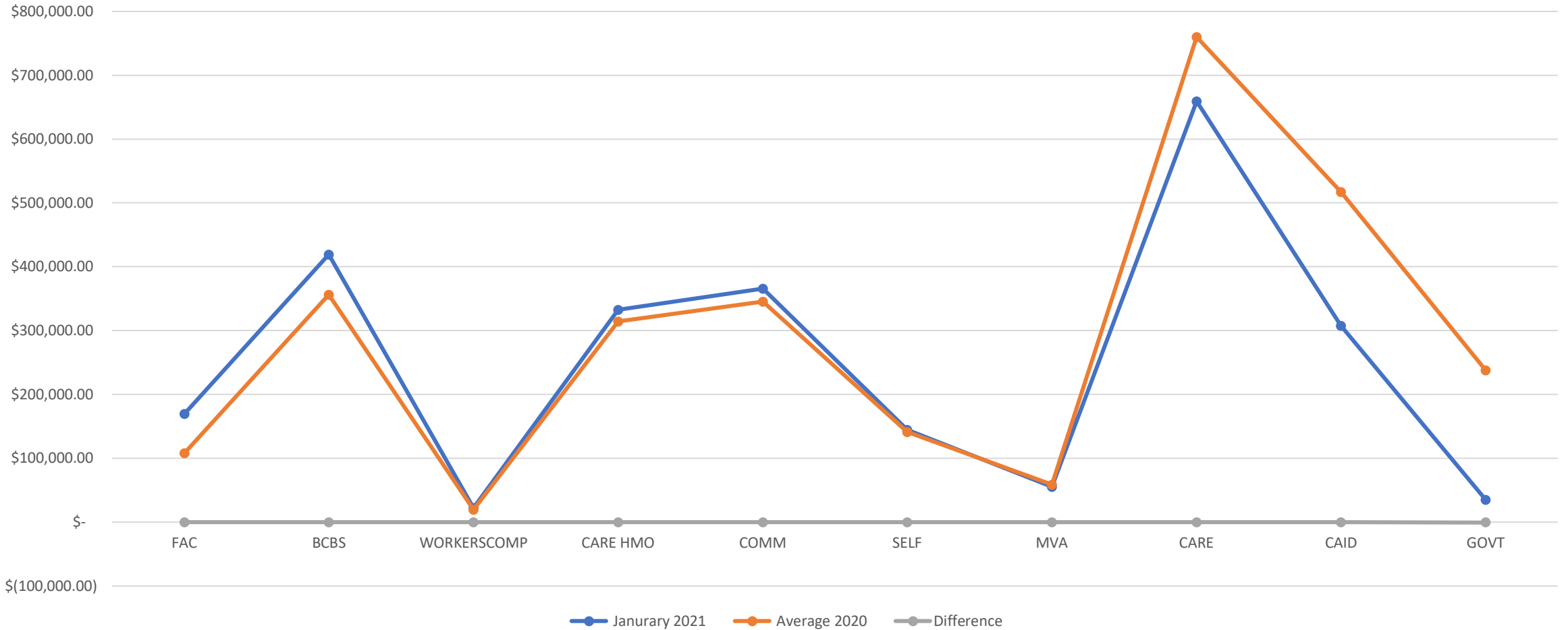
“To serve our communities’ pre-hospital needs through value-driven, compassionate, and clinically superior care.”

Western Division Total Cash Collections



“To serve our communities’ pre-hospital needs through value-driven, compassionate, and clinically superior care.”

Western Division Total Cash Collections Comparison



“To serve our communities’ pre-hospital needs through value-driven, compassionate, and clinically superior care.”

Total Cash Collections Comparison

	January 2021	Average 2020	Difference	
COMM	\$ 334,982.57	\$ 314,994.64	6%	\$ 19,987.93
BCBS	\$ 245,554.10	\$ 244,389.25	0%	\$ 1,164.85
SELF	\$ 132,208.60	\$ 133,905.37	-1%	\$ (1,696.77)
CARE HMO	\$ 381,053.97	\$ 392,078.45	-3%	\$ (11,024.48)
WORKERSCOMP	\$ 16,109.18	\$ 17,042.08	-5%	\$ (932.90)
CARE	\$ 507,789.70	\$ 566,975.60	-10%	\$ (59,185.90)
FAC	\$ 24,828.29	\$ 29,610.54	-16%	\$ (4,782.25)
CAID	\$ 341,464.68	\$ 541,915.46	-37%	\$ (200,450.78)
MVA	\$ 26,621.50	\$ 43,751.07	-39%	\$ (17,129.57)
GOVT	\$ 18,374.48	\$ 83,998.87	-78%	\$ (65,624.39)

East Overall

West Overall

	January 2021	Average 2020	Difference	
FAC	\$ 169,497.20	\$ 108,182.78	57%	\$ 61,314.42
BCBS	\$ 419,046.60	\$ 356,123.57	18%	\$ 62,923.03
WORKERSCOMP	\$ 22,103.75	\$ 19,225.12	15%	\$ 2,878.63
CARE HMO	\$ 332,655.40	\$ 314,032.75	6%	\$ 18,622.65
COMM	\$ 365,376.59	\$ 345,103.63	6%	\$ 20,272.96
SELF	\$ 144,536.80	\$ 141,352.79	2%	\$ 3,184.01
MVA	\$ 55,038.13	\$ 59,016.08	-7%	\$ (3,977.95)
CARE	\$ 659,242.80	\$ 759,828.04	-13%	\$ (100,585.24)
CAID	\$ 307,624.57	\$ 516,859.13	-40%	\$ (209,234.56)
GOVT	\$ 35,313.78	\$ 238,018.54	-85%	\$ (202,704.76)



“To serve our communities’ pre-hospital needs through value-driven, compassionate, and clinically superior care.”