

# Operational Compliance Report

## October 2020

*Frank Gresh*

*Chief Information Officer*



**“To serve our communities’ pre-hospital needs through value-driven, compassionate, and clinically superior care.”**

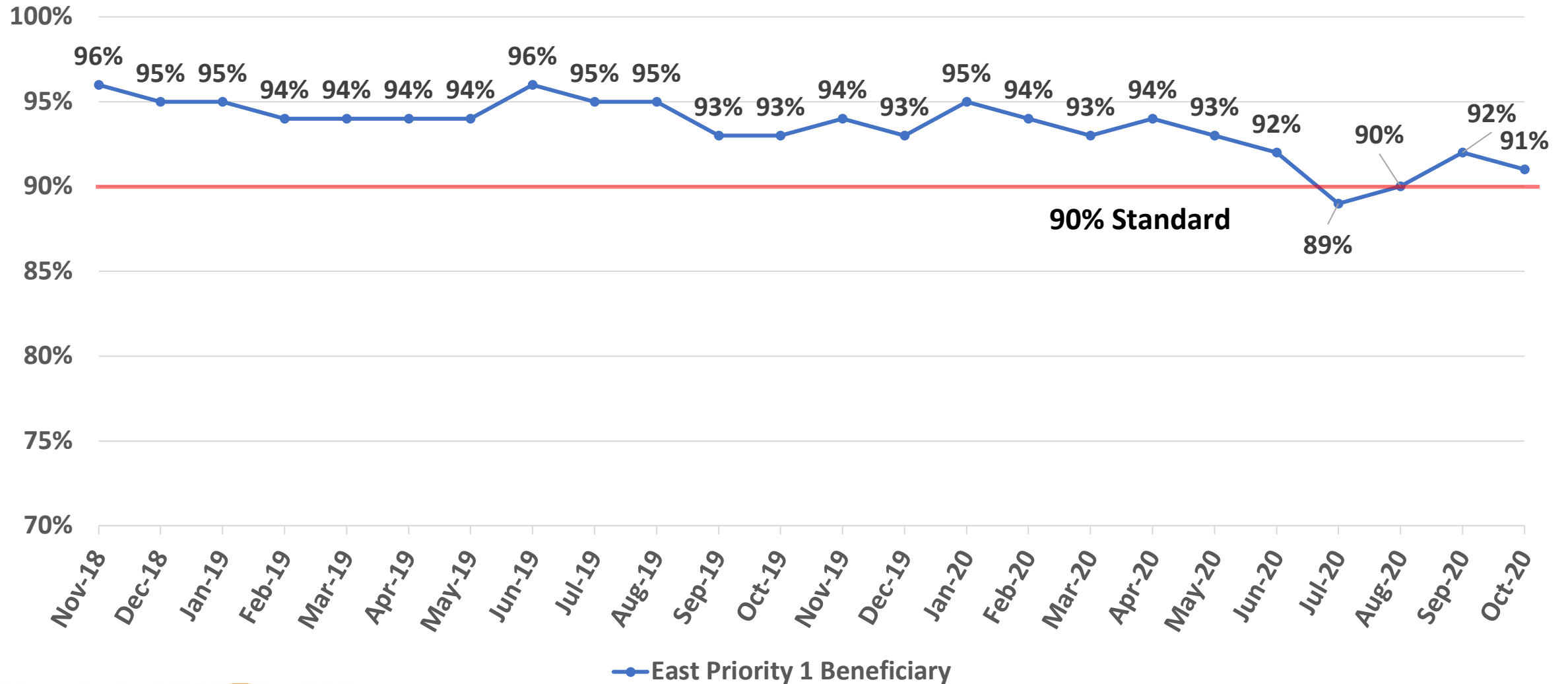
# October 2020 Compliance Summary – Combined

	Priority 1	Priority 2	Priority 3	Priority 4
East Ben. Total	91%	97%	<b>78%</b>	96%
East NB Total	Priority 1&2	<b>83%</b>	100%	<b>0%</b> <small>(0/1)</small>
West Ben. Total	<b>75%</b>	91%	<b>66%</b>	<b>88%</b>
West NB Total	Priority 1&2	<b>76%</b>	<b>10%</b>	N/A



“To serve our communities’ pre-hospital needs through value-driven, compassionate, and clinically superior care.”

# East Beneficiary Response Time Compliance

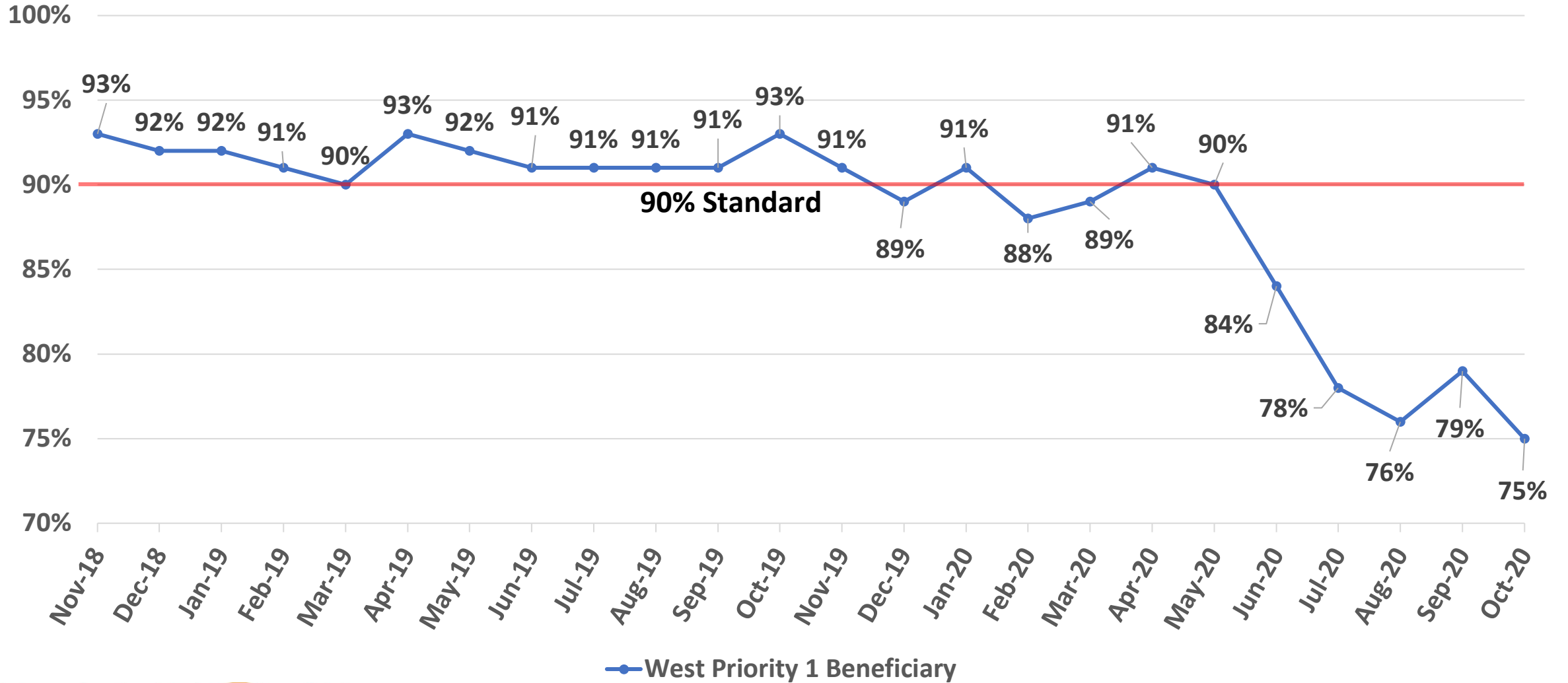


— East Priority 1 Beneficiary



**“To serve our communities’ pre-hospital needs through value-driven, compassionate, and clinically superior care.”**

# West Beneficiary Response Time Compliance



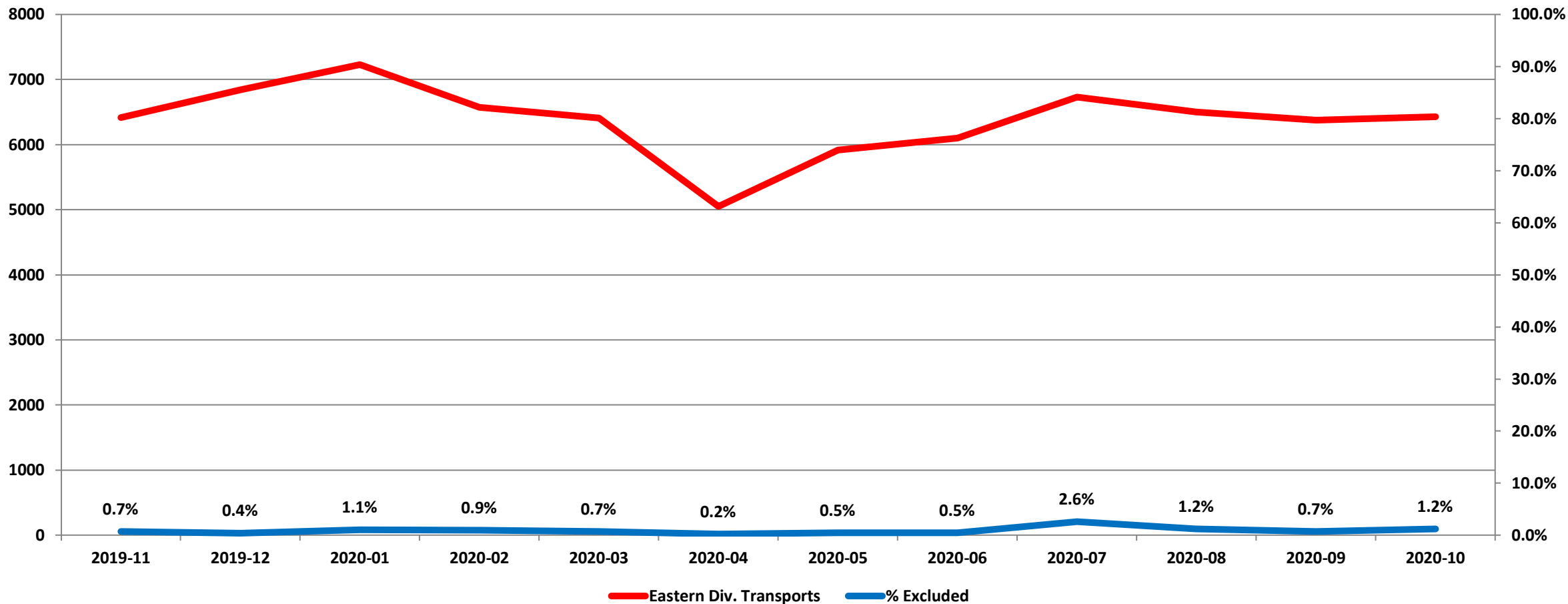
— West Priority 1 Beneficiary



**“To serve our communities’ pre-hospital needs through value-driven, compassionate, and clinically superior care.”**

# Exclusions

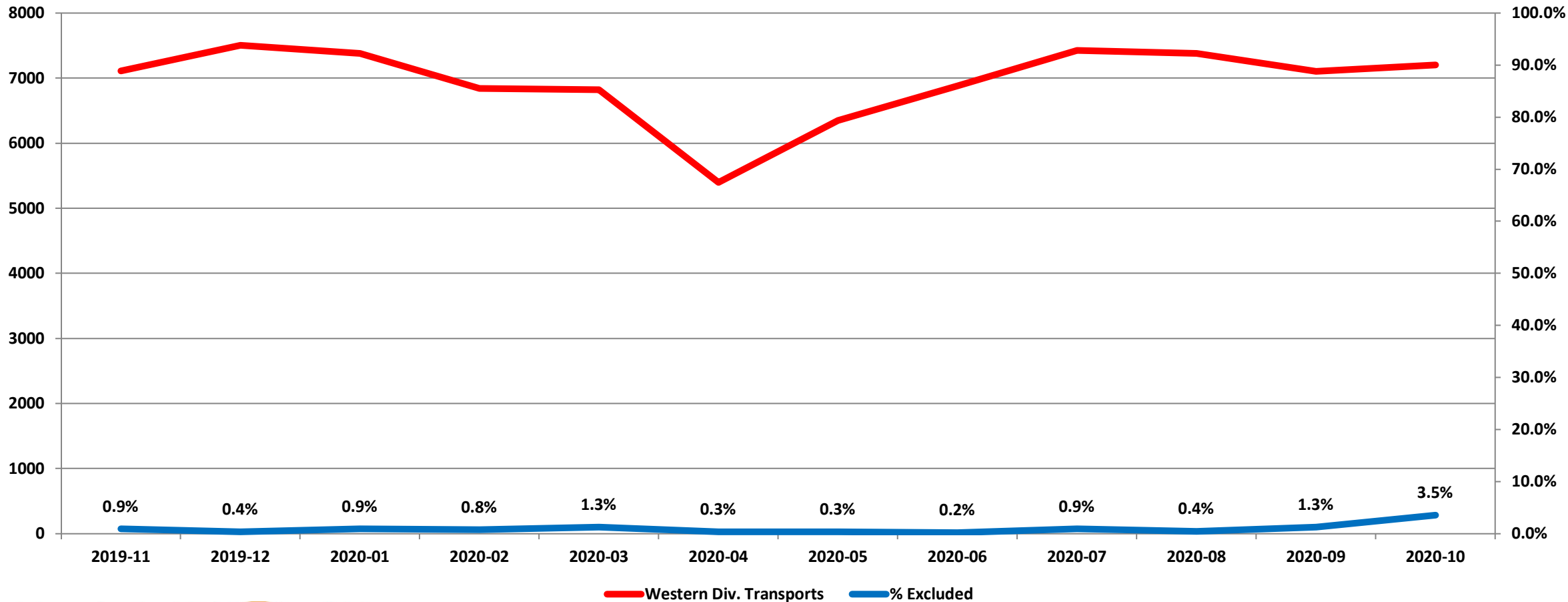
## Eastern Division Response Time Exclusions Twelve Months ending October, 2020



**“To serve our communities’ pre-hospital needs through value-driven, compassionate, and clinically superior care.”**

# Exclusions

## Western Division Response Time Exclusions Twelve Months ending October, 2020



**“To serve our communities’ pre-hospital needs through value-driven, compassionate, and clinically superior care.”**