

# Operational Compliance Report

## September 2020

*Frank Gresh*

*Chief Information Officer*



**“To serve our communities’ pre-hospital needs through value-driven, compassionate, and clinically superior care.”**

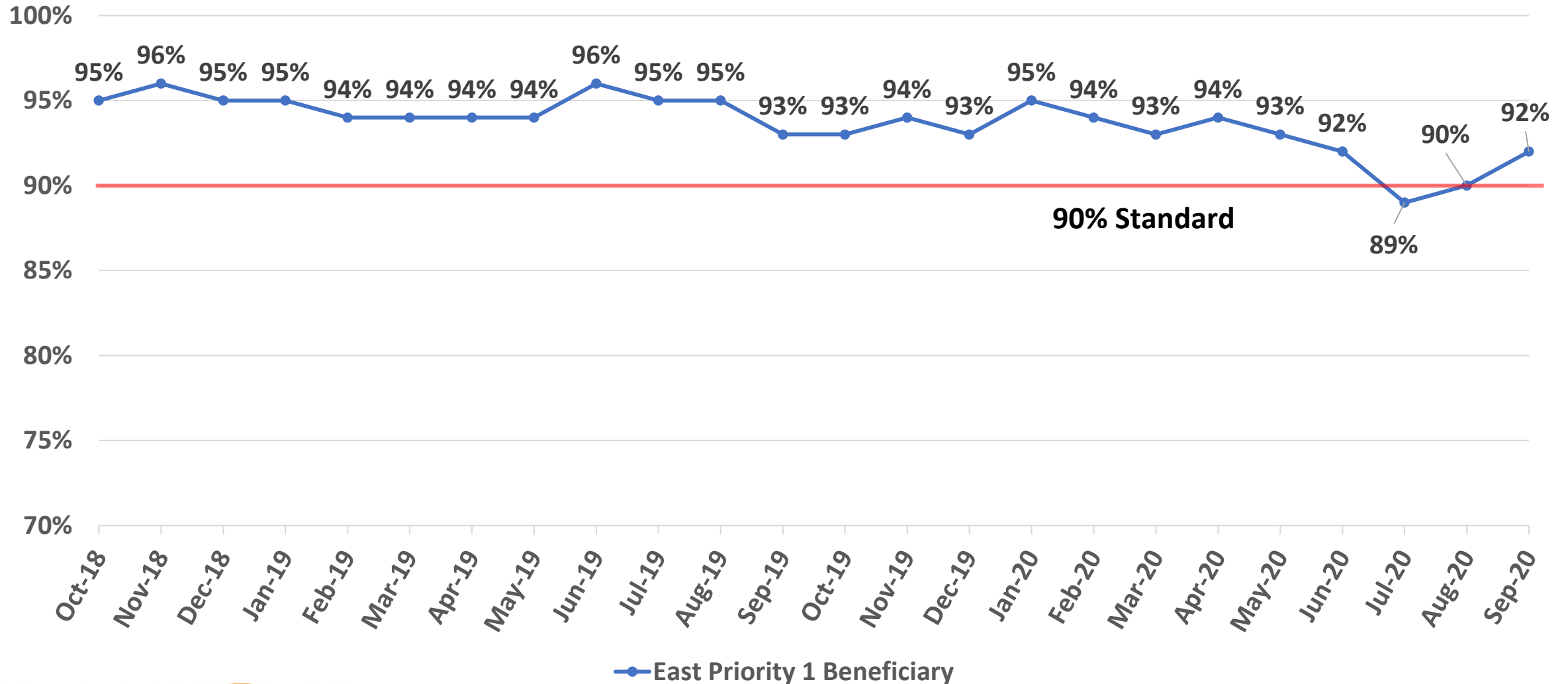
# September 2020 Compliance Summary – Combined

	Priority 1	Priority 2	Priority 3	Priority 4
<b>East Ben. Total</b>	92%	98%	<b>89%</b>	92%
<b>East NB Total</b>	Priority 1&2	<b>89%</b>	N/A	100%
<b>West Ben. Total</b>	<b>79%</b>	95%	<b>69%</b>	<b>58%</b>
<b>West NB Total</b>	Priority 1&2	<b>80%</b>	<b>66%</b>	N/A



**“To serve our communities’ pre-hospital needs through value-driven, compassionate, and clinically superior care.”**

# East Beneficiary Response Time Compliance

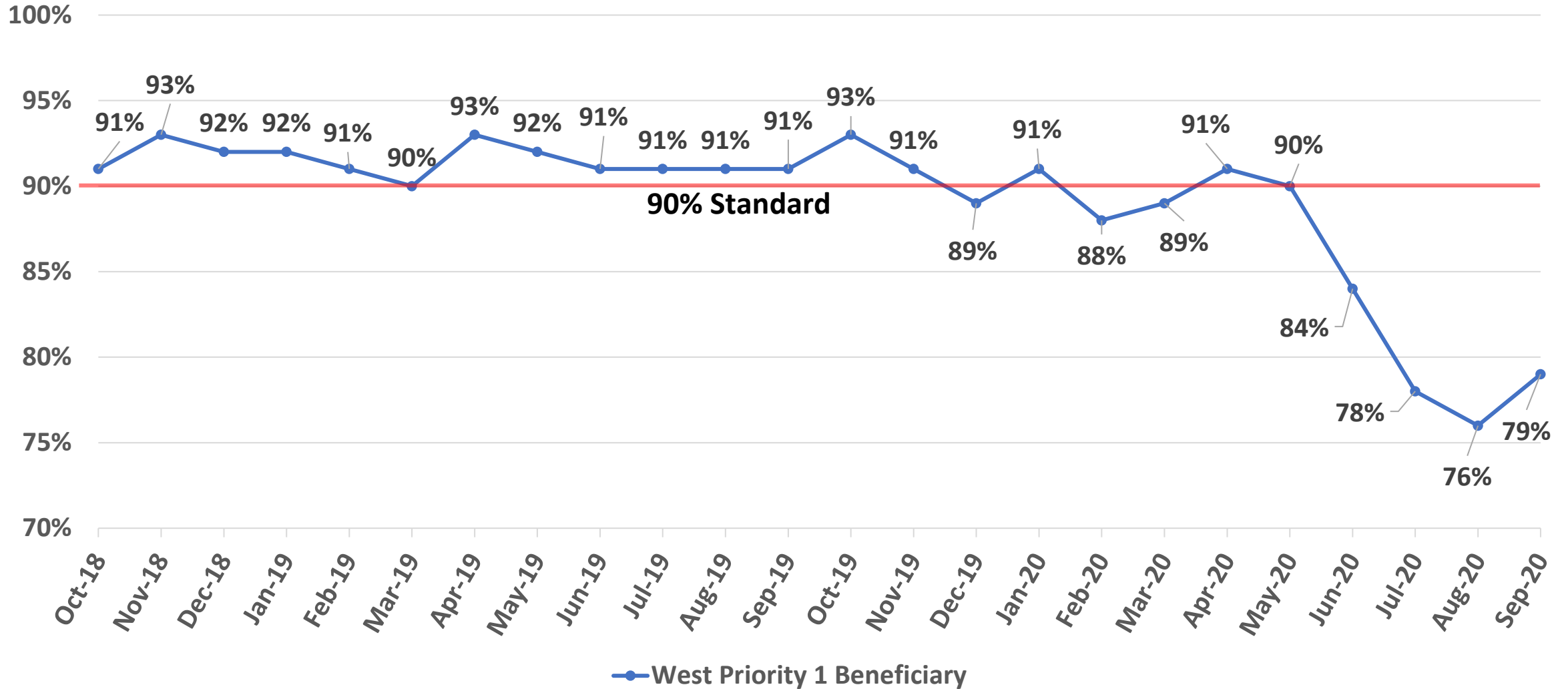


— East Priority 1 Beneficiary



**“To serve our communities’ pre-hospital needs through value-driven, compassionate, and clinically superior care.”**

# West Beneficiary Response Time Compliance



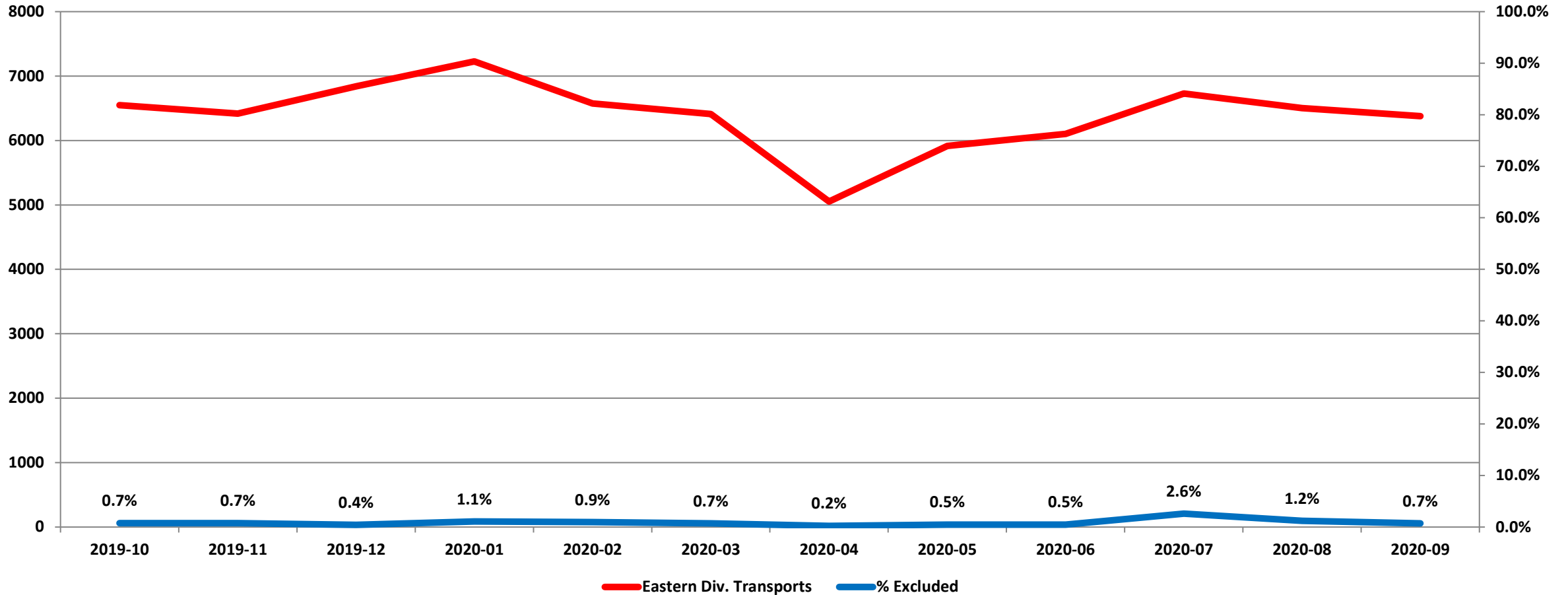
— West Priority 1 Beneficiary



**“To serve our communities’ pre-hospital needs through value-driven, compassionate, and clinically superior care.”**

# Exclusions

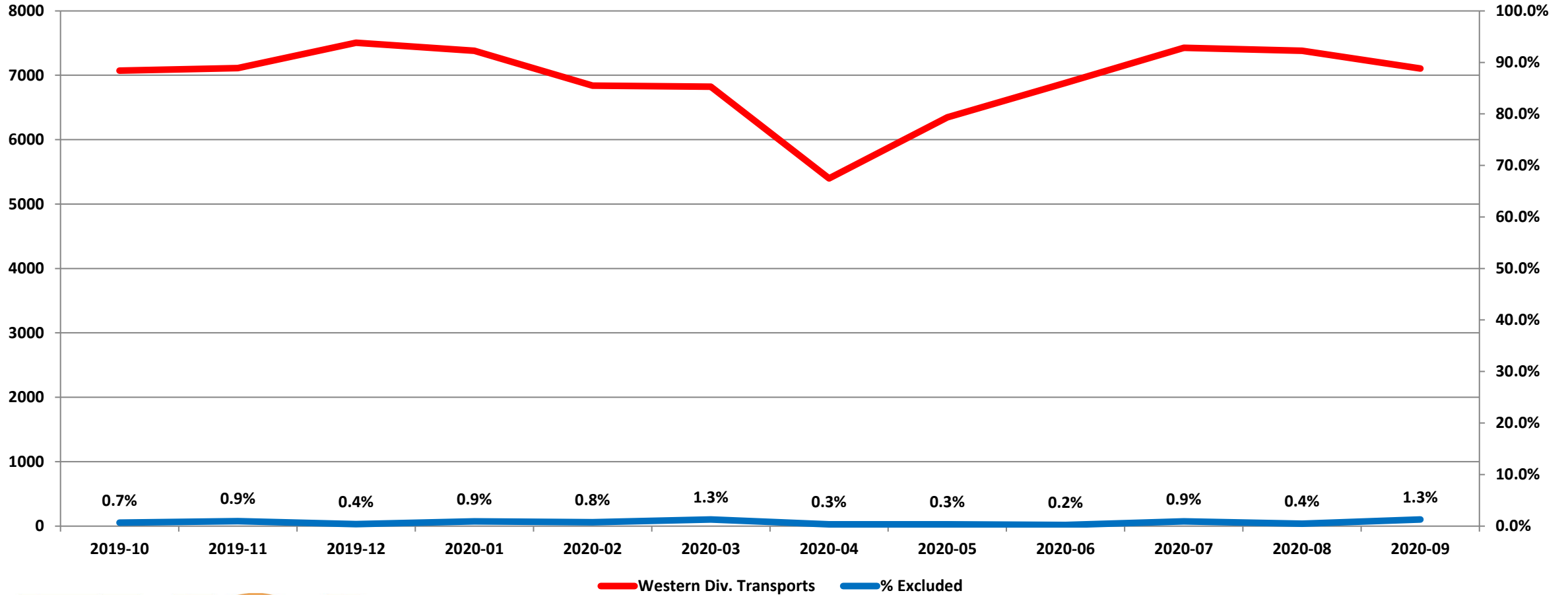
## Eastern Division Response Time Exclusions Twelve Months ending September, 2020



**“To serve our communities’ pre-hospital needs through value-driven, compassionate, and clinically superior care.”**

# Exclusions

## Western Division Response Time Exclusions Twelve Months ending September, 2020



**“To serve our communities’ pre-hospital needs through value-driven, compassionate, and clinically superior care.”**