

Operational Compliance Report

July 2020

Frank Gresh

Chief Information Officer



“To serve our communities’ pre-hospital needs through value-driven, compassionate, and clinically superior care.”

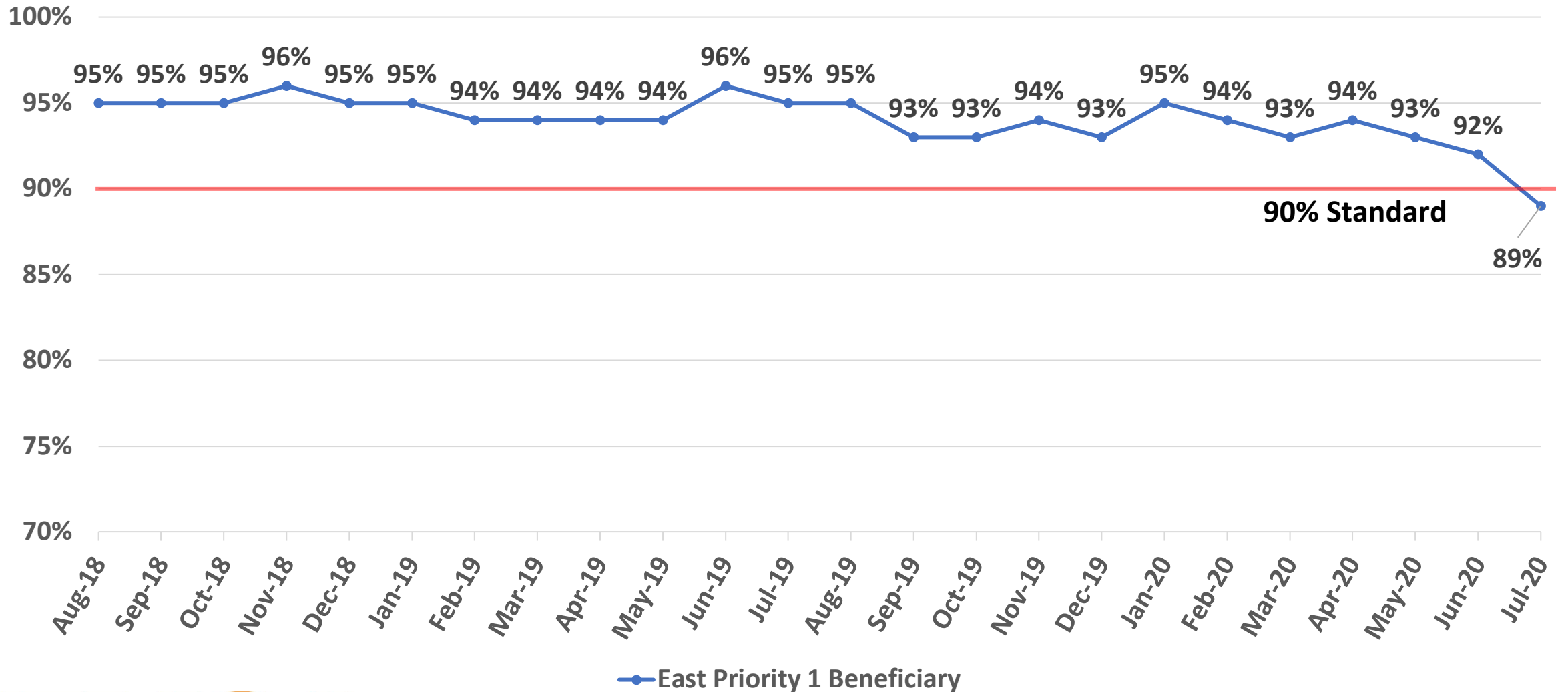
July 2020 Compliance Summary – Combined

	Priority 1	Priority 2	Priority 3	Priority 4
East Ben. Total	89%	96%	74%	93%
East NB Total	Priority 1&2	84%	100%	100%
West Ben. Total	78%	94%	61%	77%
West NB Total	Priority 1&2	79%	77% <small>(9/2)</small>	N/A



“To serve our communities’ pre-hospital needs through value-driven, compassionate, and clinically superior care.”

East Beneficiary Response Time Compliance

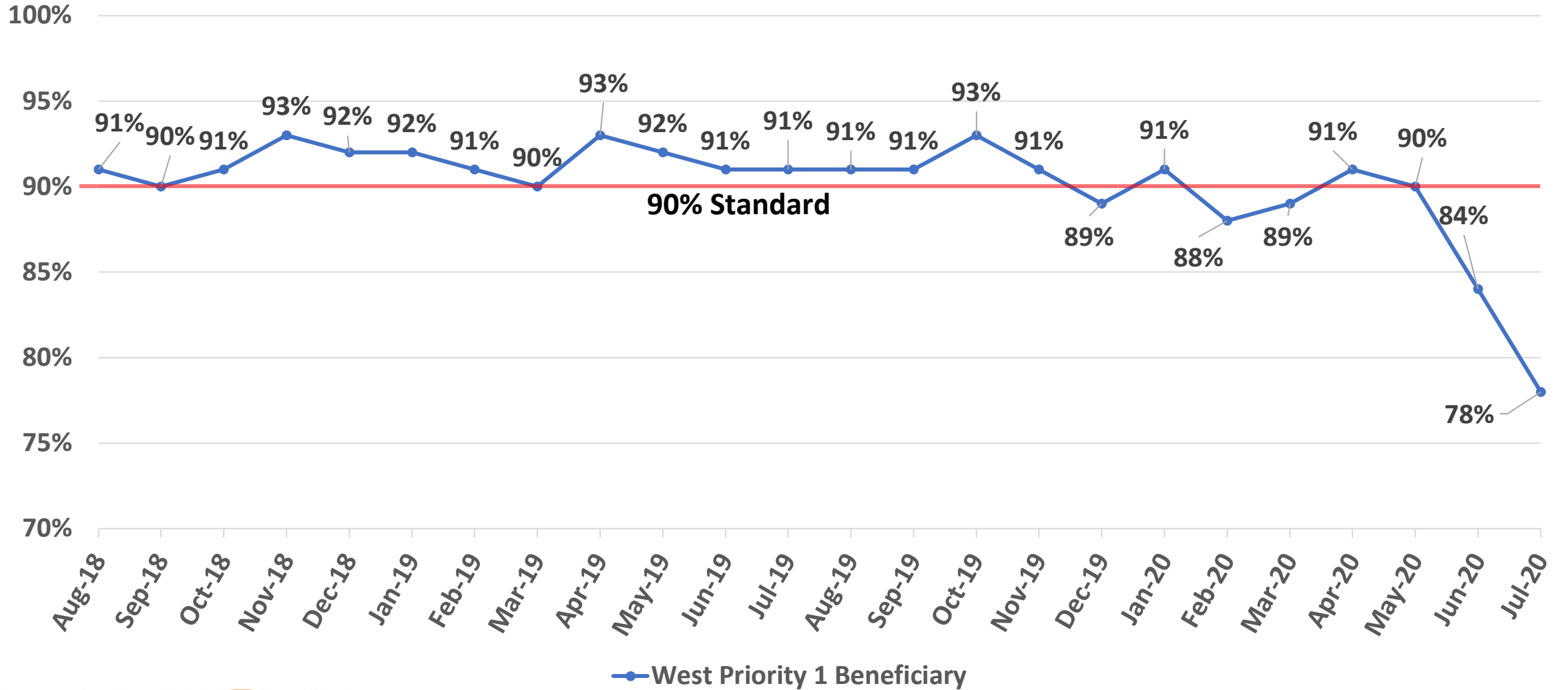


— East Priority 1 Beneficiary



“To serve our communities’ pre-hospital needs through value-driven, compassionate, and clinically superior care.”

West Beneficiary Response Time Compliance



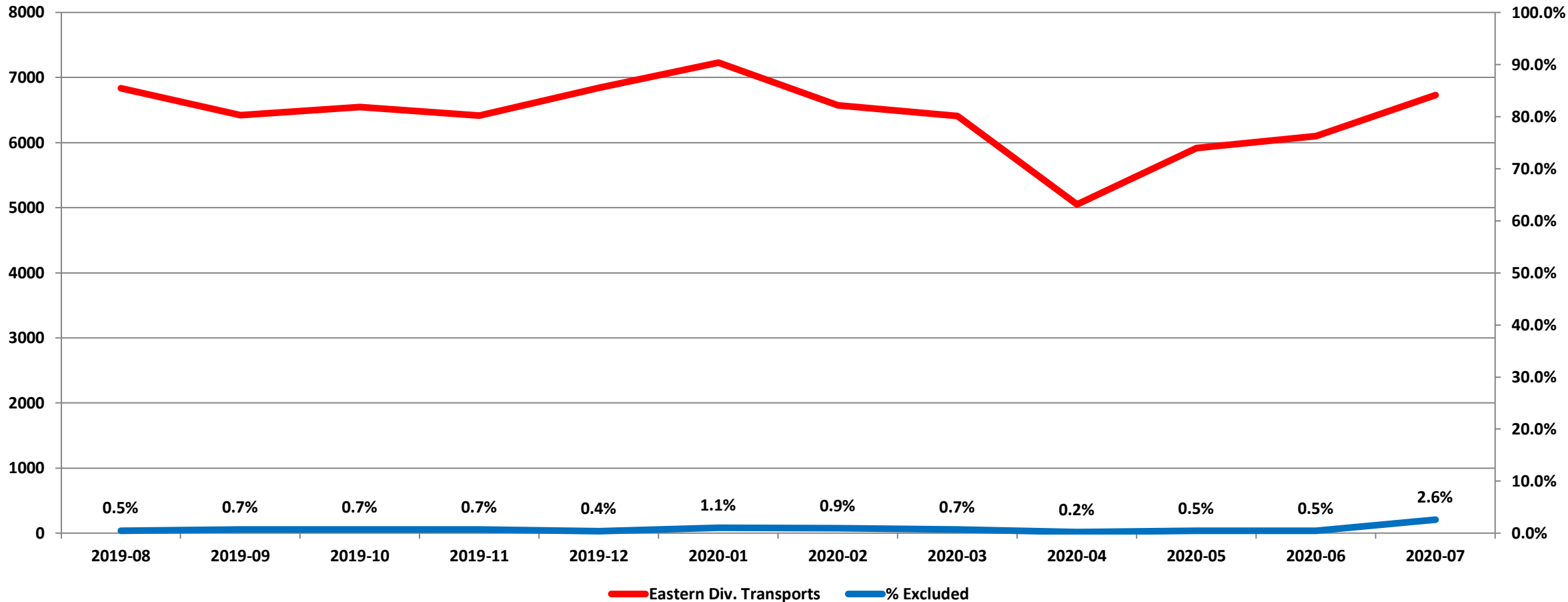
— West Priority 1 Beneficiary



“To serve our communities’ pre-hospital needs through value-driven, compassionate, and clinically superior care.”

Exclusions

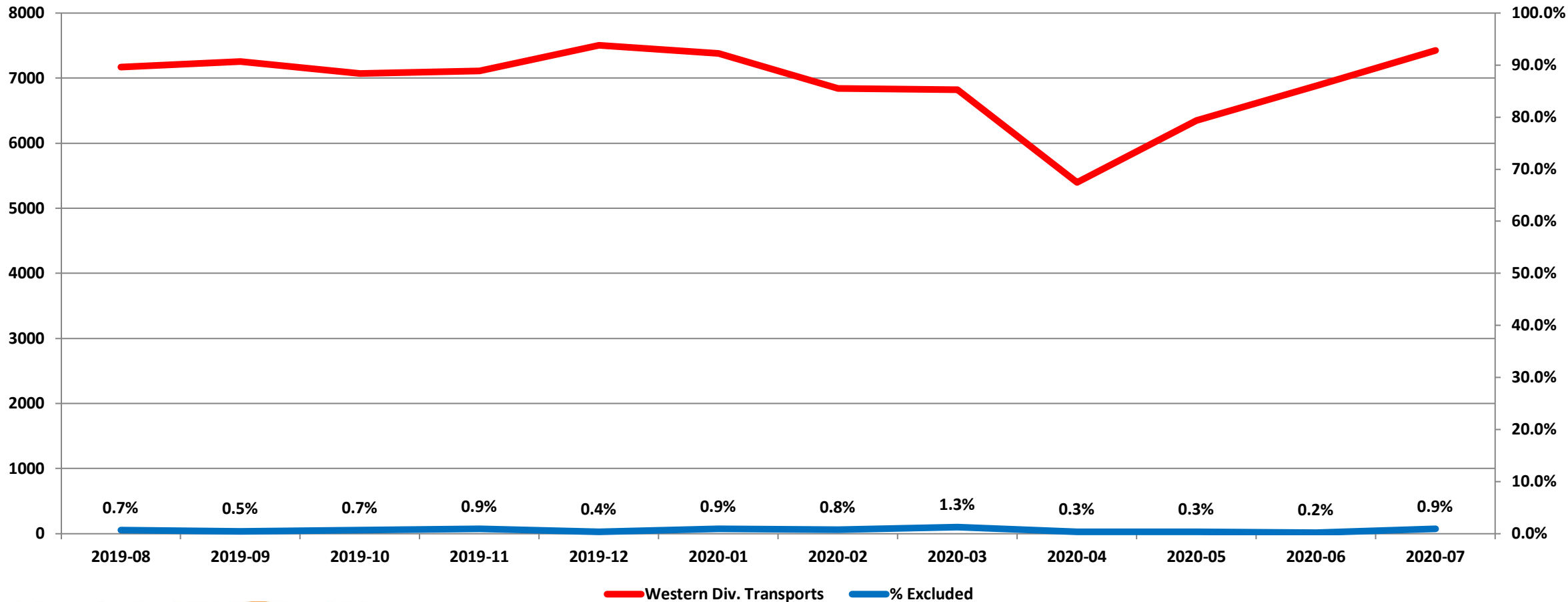
Eastern Division Response Time Exclusions Twelve Months ending July, 2020



“To serve our communities’ pre-hospital needs through value-driven, compassionate, and clinically superior care.”

Exclusions

Western Division Response Time Exclusions Twelve Months ending July, 2020



“To serve our communities’ pre-hospital needs through value-driven, compassionate, and clinically superior care.”