

# EMSA



**"To serve our communities' pre-hospital needs through value-driven, compassionate, and clinically superior care."**

# Patient Financial Services Report

## December 2019

(Data Through November Close)

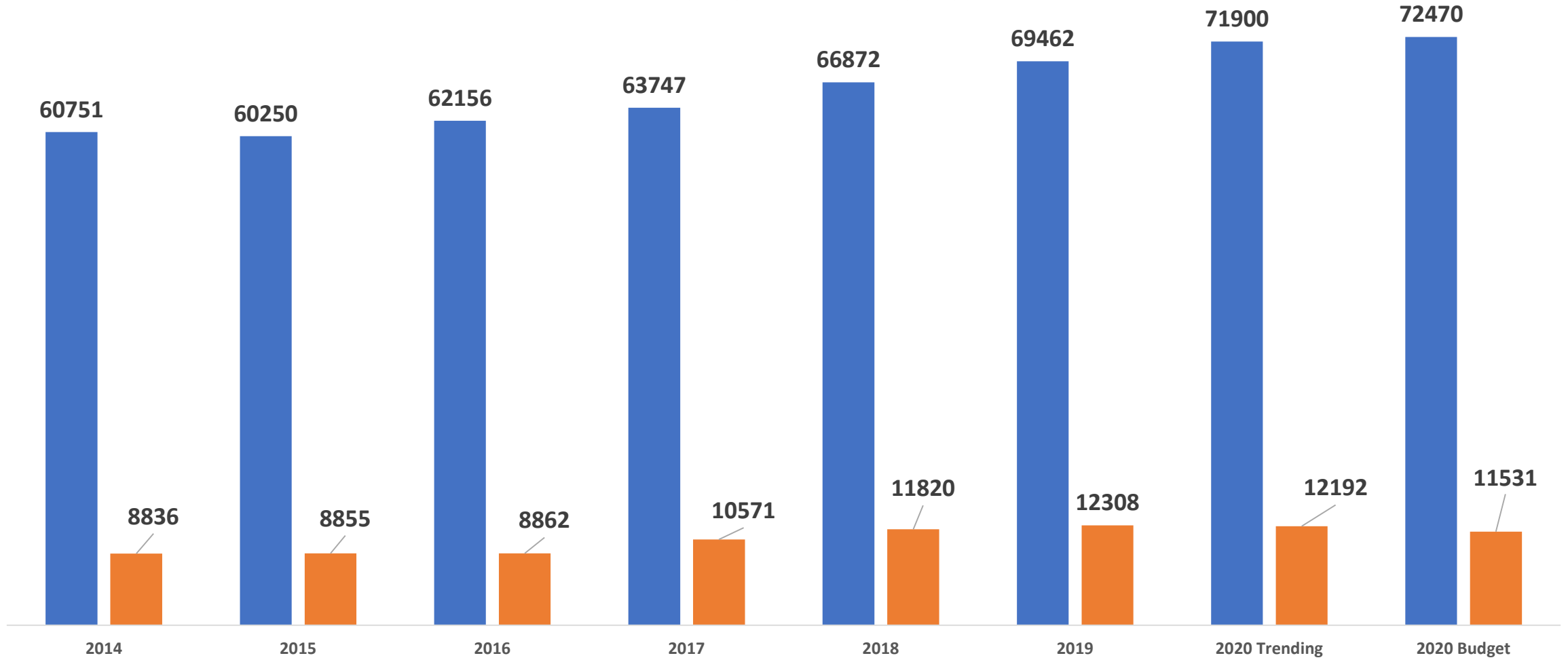
*Angela McLain-Johnson, MA, RHIA*  
*Chief Compliance/Revenue Officer*



**“To serve our communities’ pre-hospital needs through value-driven, compassionate, and clinically superior care.”**

# Eastern Division Call Volume

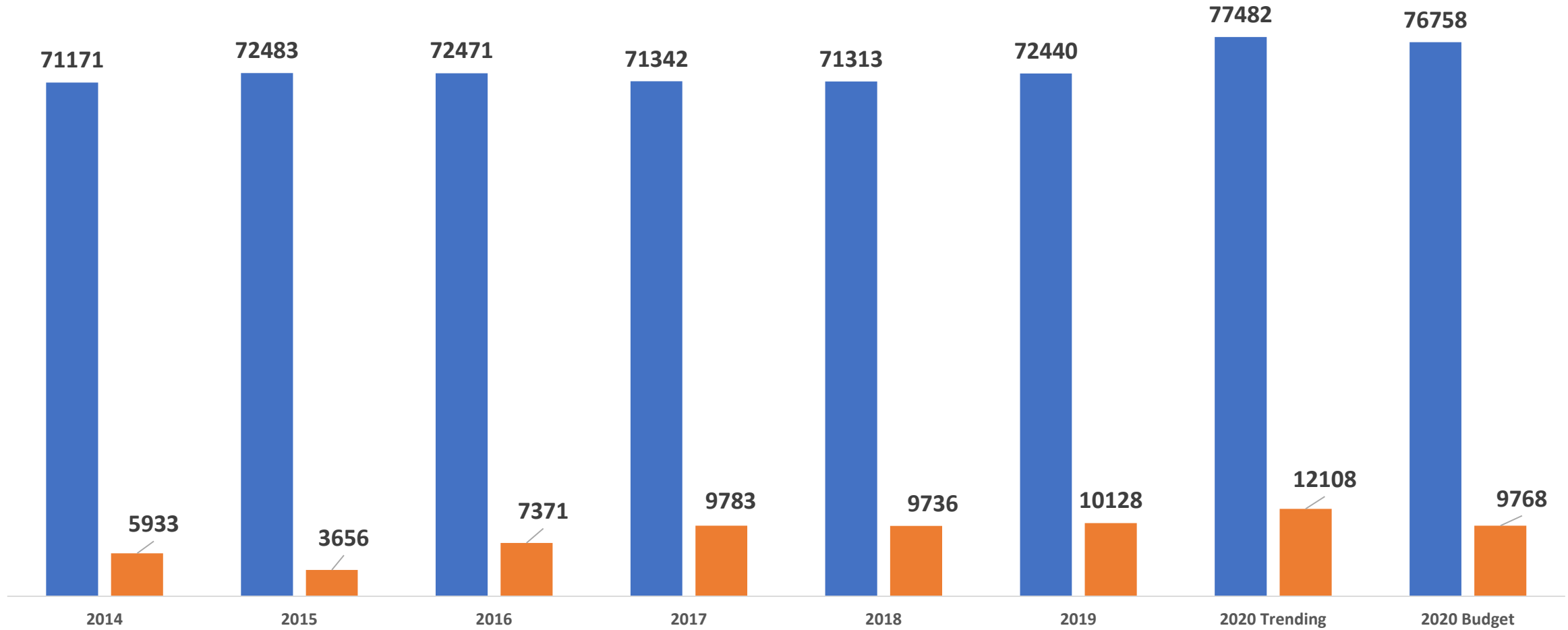
■ Emergency ■ Non-Emergency



**“To serve our communities’ pre-hospital needs through value-driven, compassionate, and clinically superior care.”**

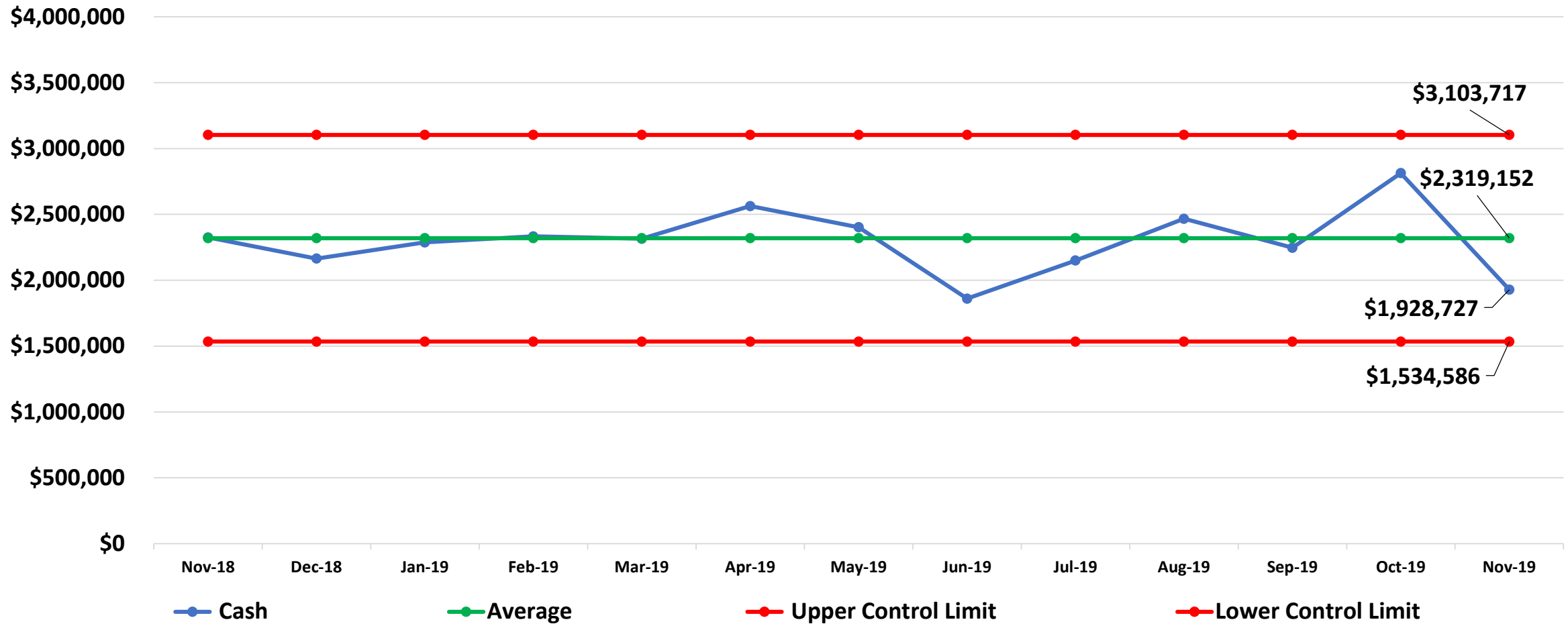
# Western Division Call Volume

■ Emergency ■ Non-Emergency



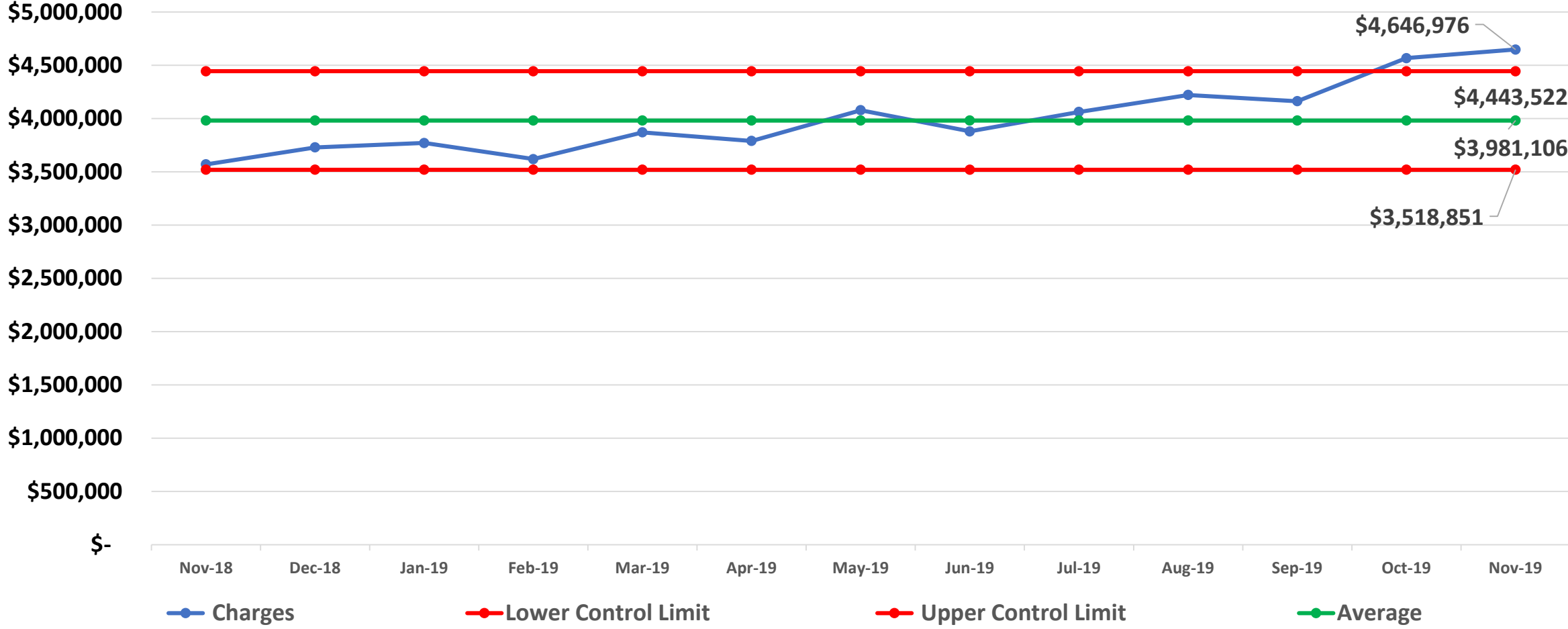
**“To serve our communities’ pre-hospital needs through value-driven, compassionate, and clinically superior care.”**

# Eastern Division Total Cash Collections



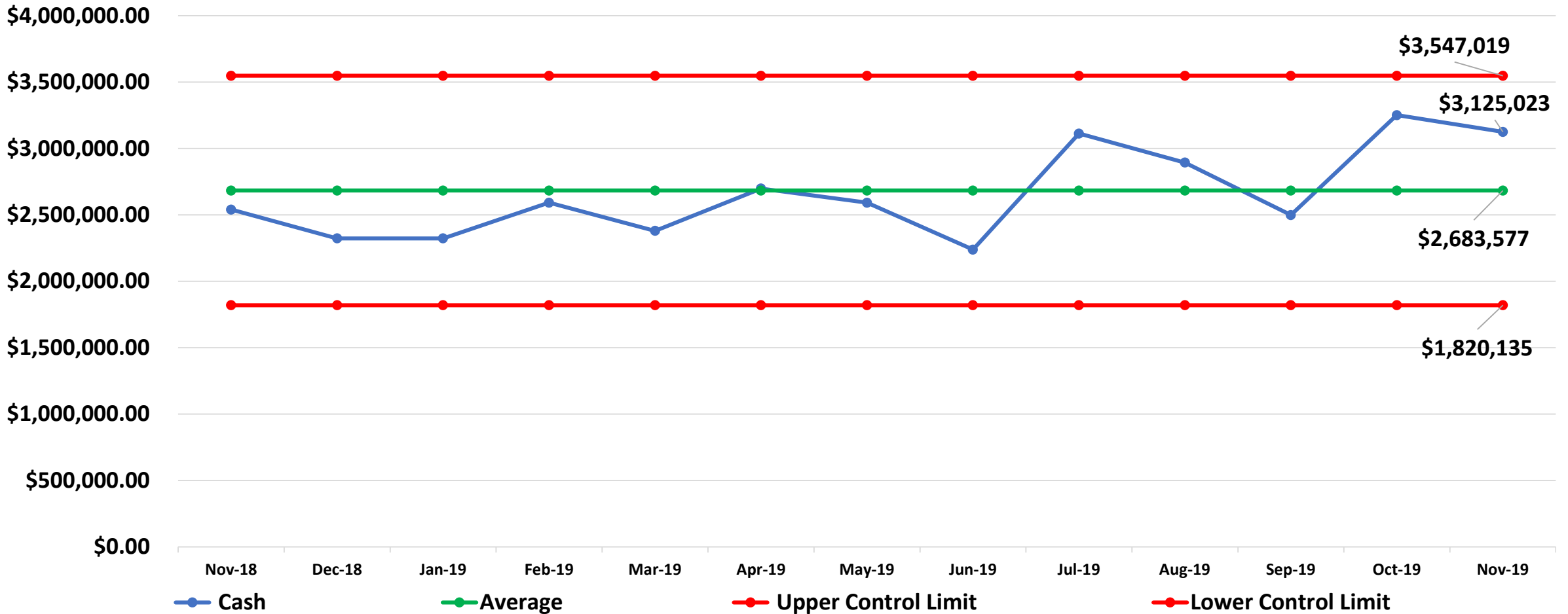
**“To serve our communities’ pre-hospital needs through value-driven, compassionate, and clinically superior care.”**

# Eastern Division Total Charges



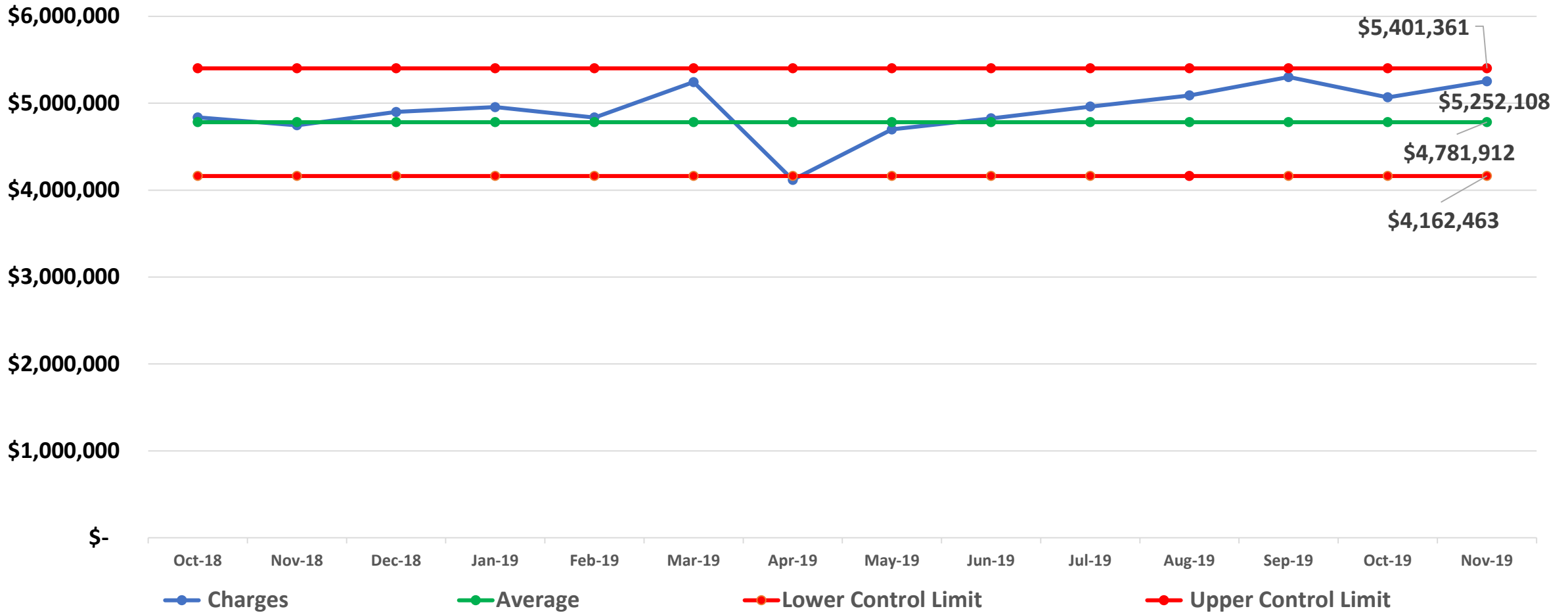
**“To serve our communities’ pre-hospital needs through value-driven, compassionate, and clinically superior care.”**

# Western Division Total Cash Collections



**“To serve our communities’ pre-hospital needs through value-driven, compassionate, and clinically superior care.”**

# Western Division Total Charges



**“To serve our communities’ pre-hospital needs through value-driven, compassionate, and clinically superior care.”**