

Patient Financial Services Report November 2019

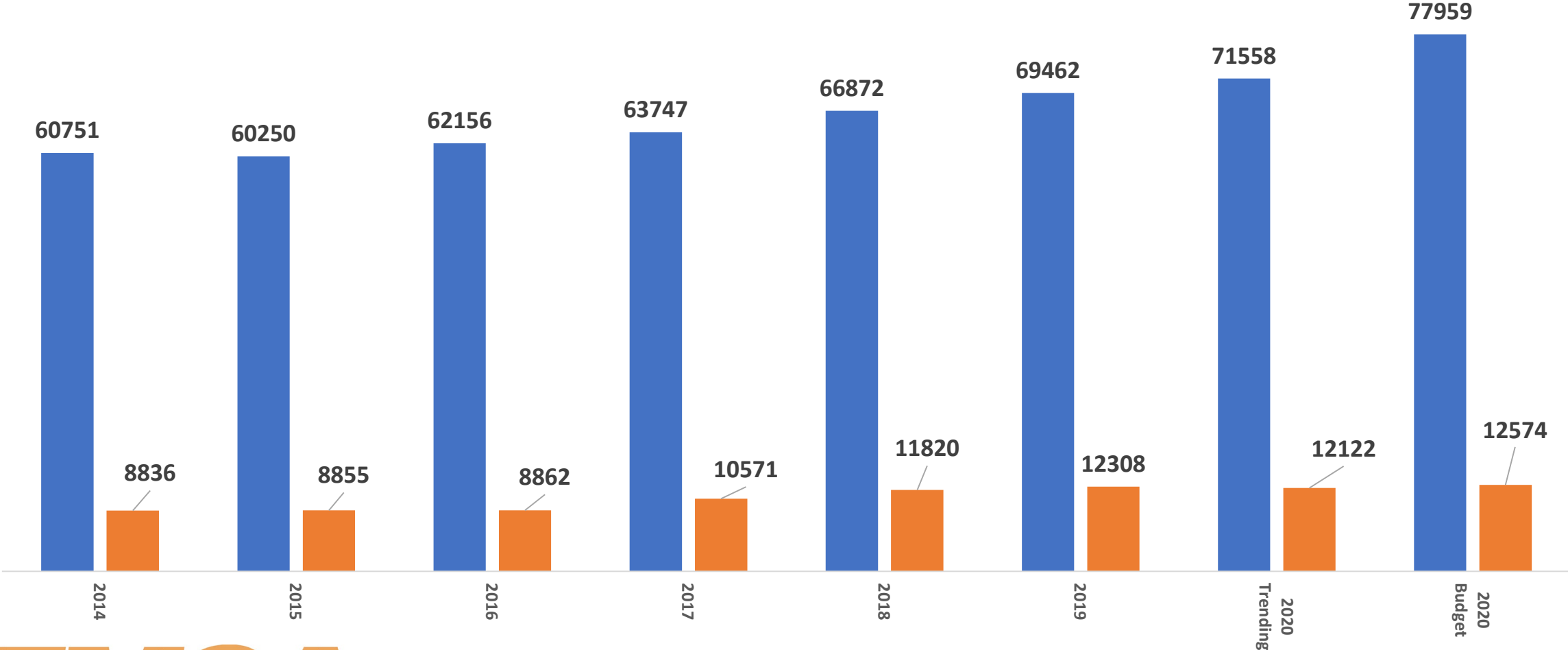
*Angela McLain-Johnson, MA, RHIA
Chief Compliance/Revenue Officer*



“To serve our communities’ pre-hospital needs through value-driven, compassionate, and clinically superior care.”

Eastern Division Call Volume

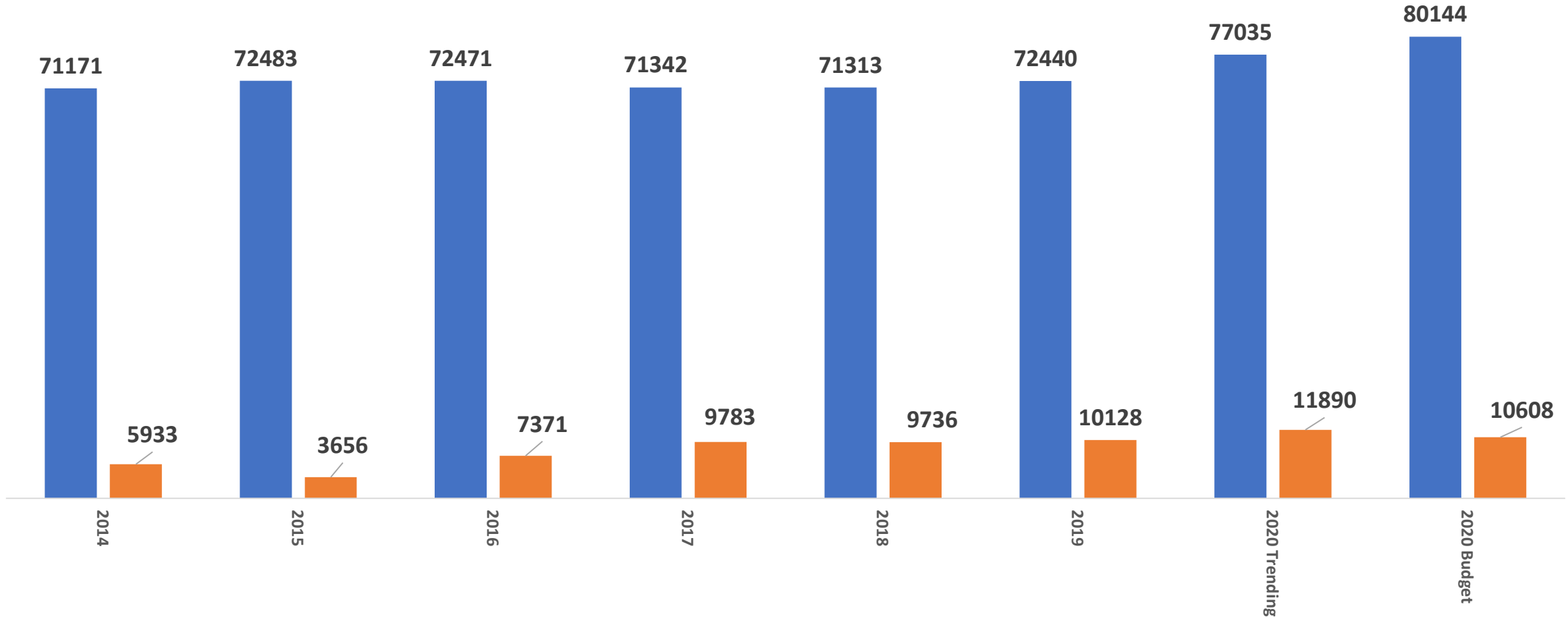
■ Emergency ■ Non-Emergency



“To serve our communities’ pre-hospital needs through value-driven, compassionate, and clinically superior care.”

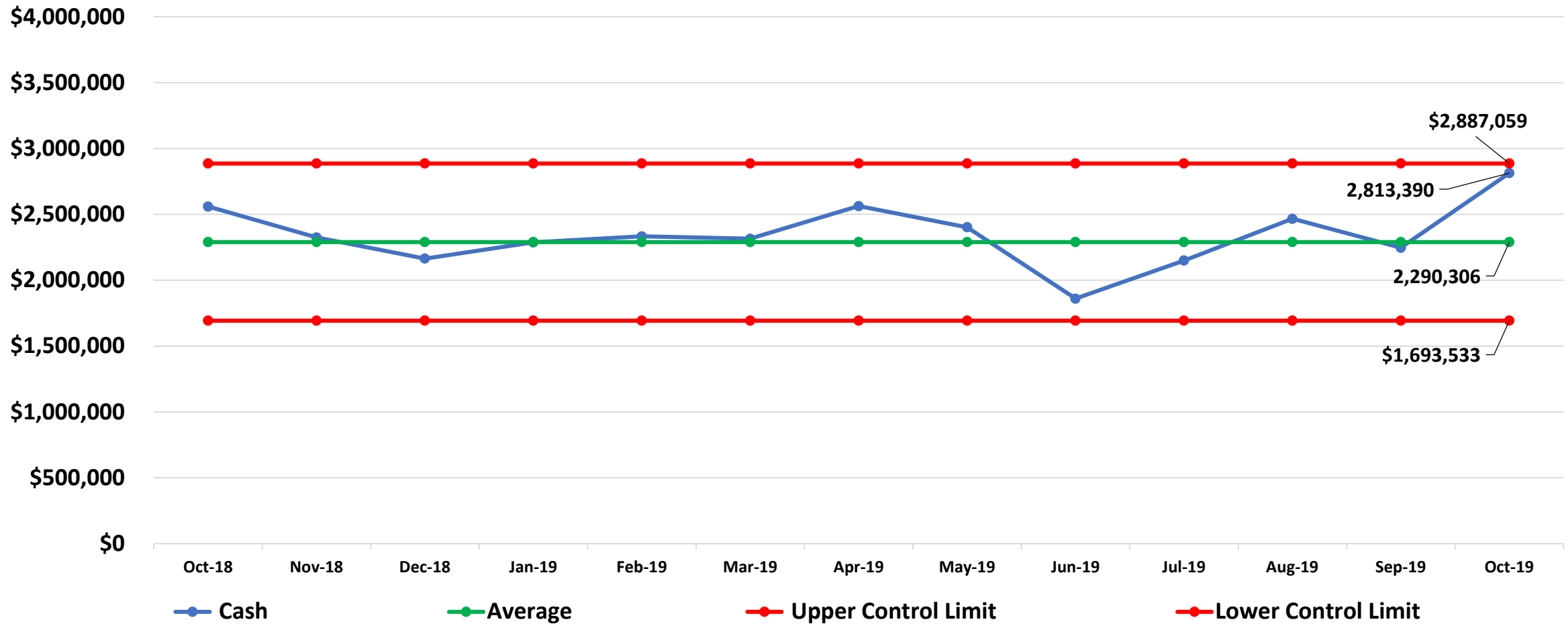
Western Division Call Volume

■ Emergency ■ Non-Emergency



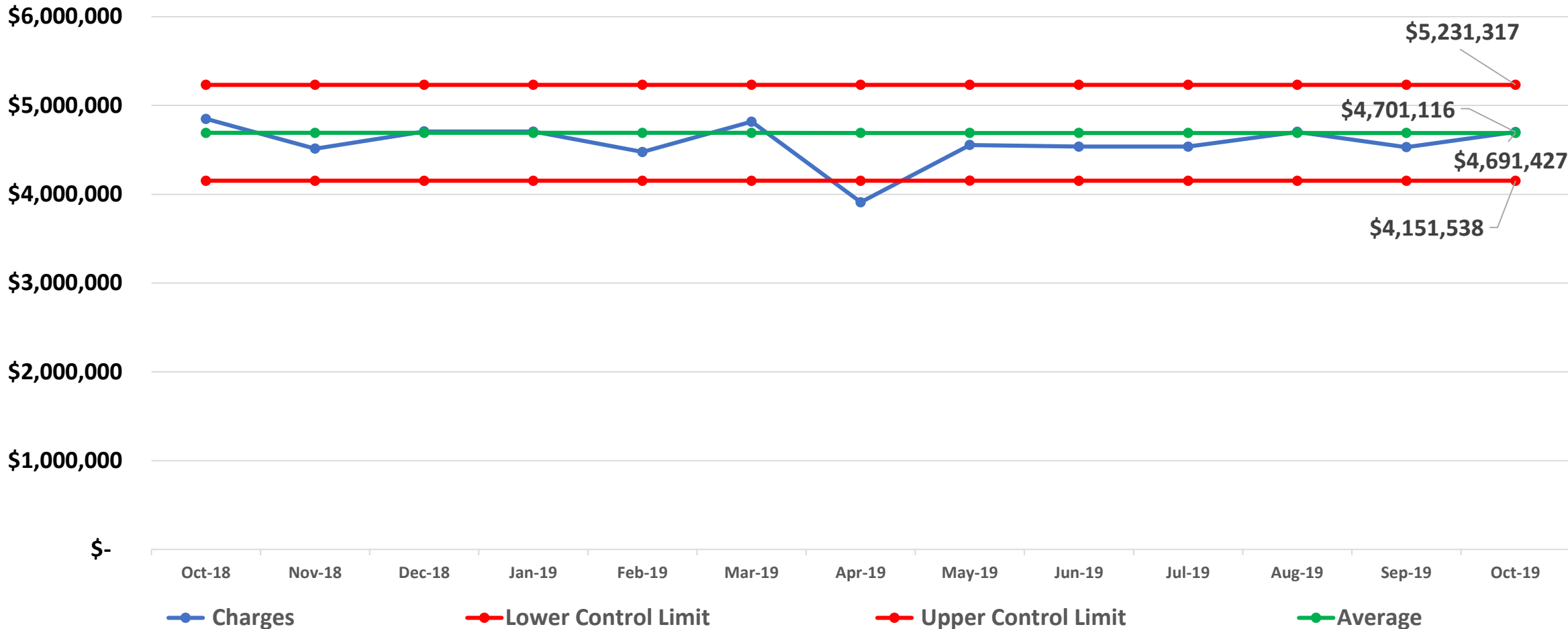
“To serve our communities’ pre-hospital needs through value-driven, compassionate, and clinically superior care.”

Eastern Division Total Cash Collections



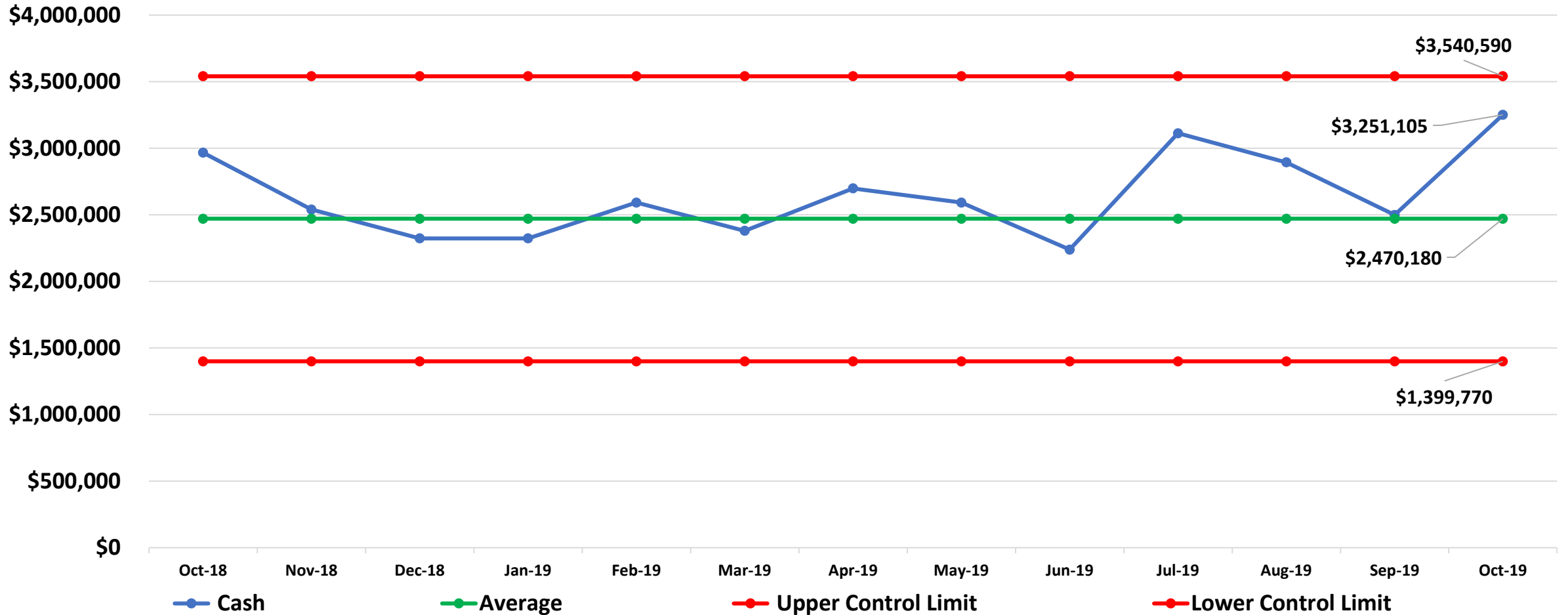
“To serve our communities’ pre-hospital needs through value-driven, compassionate, and clinically superior care.”

Eastern Division Total Charges



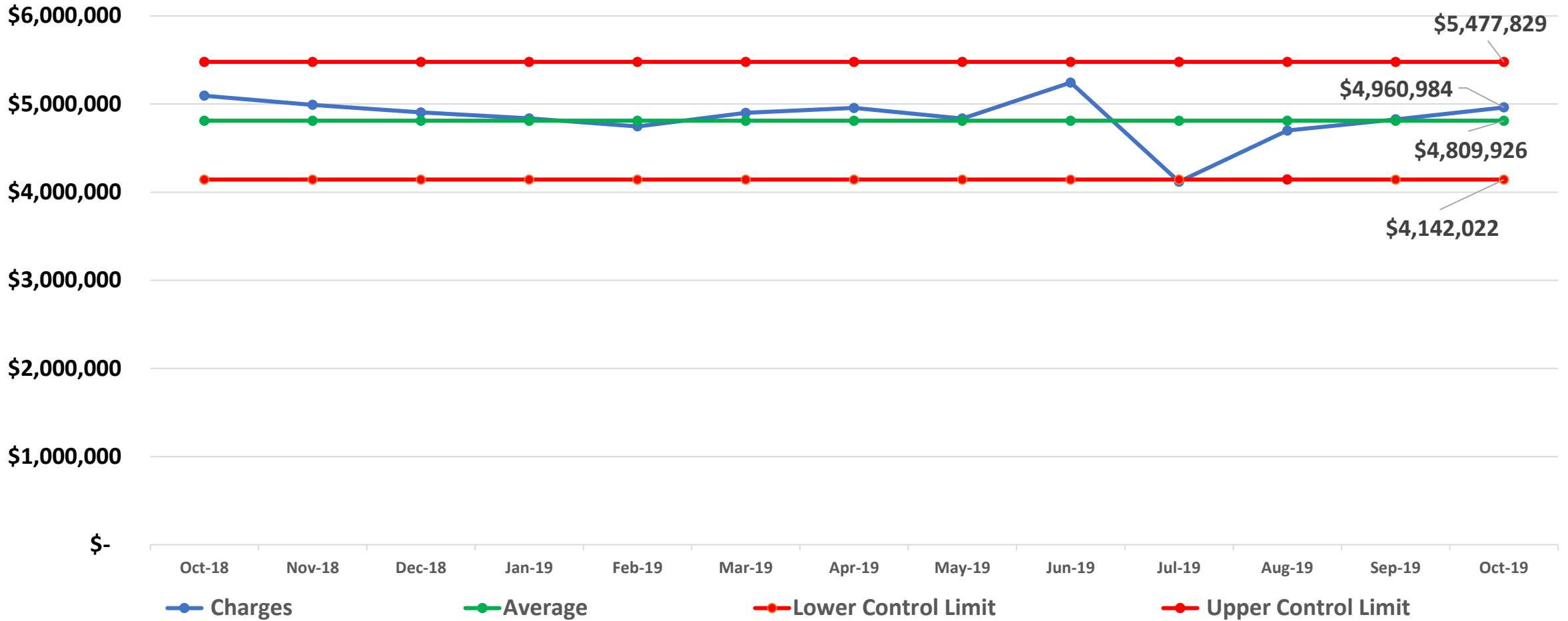
“To serve our communities’ pre-hospital needs through value-driven, compassionate, and clinically superior care.”

Western Division Total Cash Collections



“To serve our communities’ pre-hospital needs through value-driven, compassionate, and clinically superior care.”

Western Division Total Charges



“To serve our communities’ pre-hospital needs through value-driven, compassionate, and clinically superior care.”