

# President's Commentary

*Jim Winham*

*Chief Executive Officer*



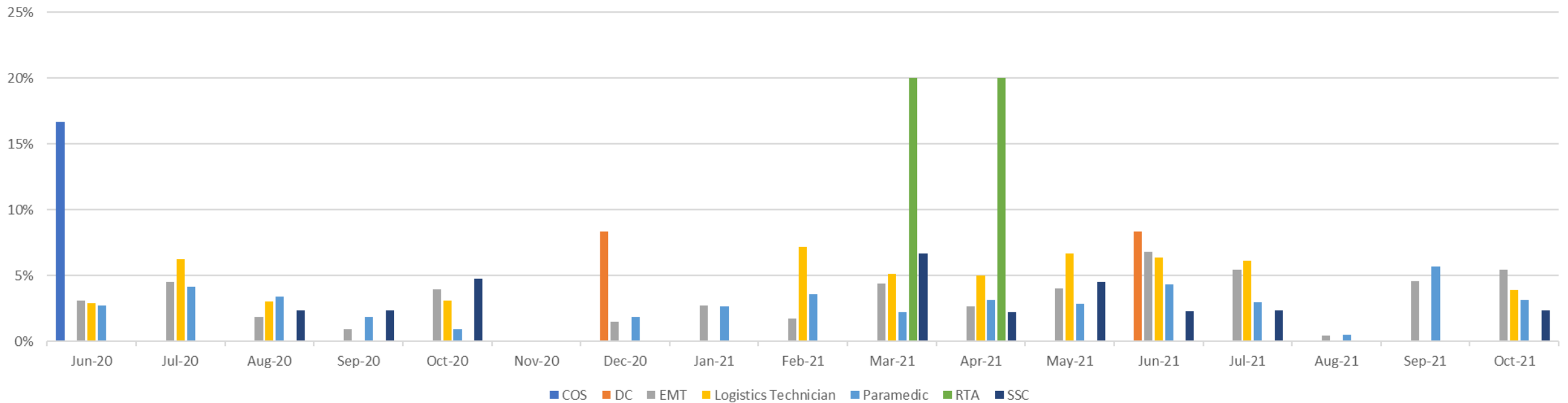
**“To serve our communities’ pre-hospital needs through value-driven, compassionate, and clinically superior care.”**

# Headcount Dashboard



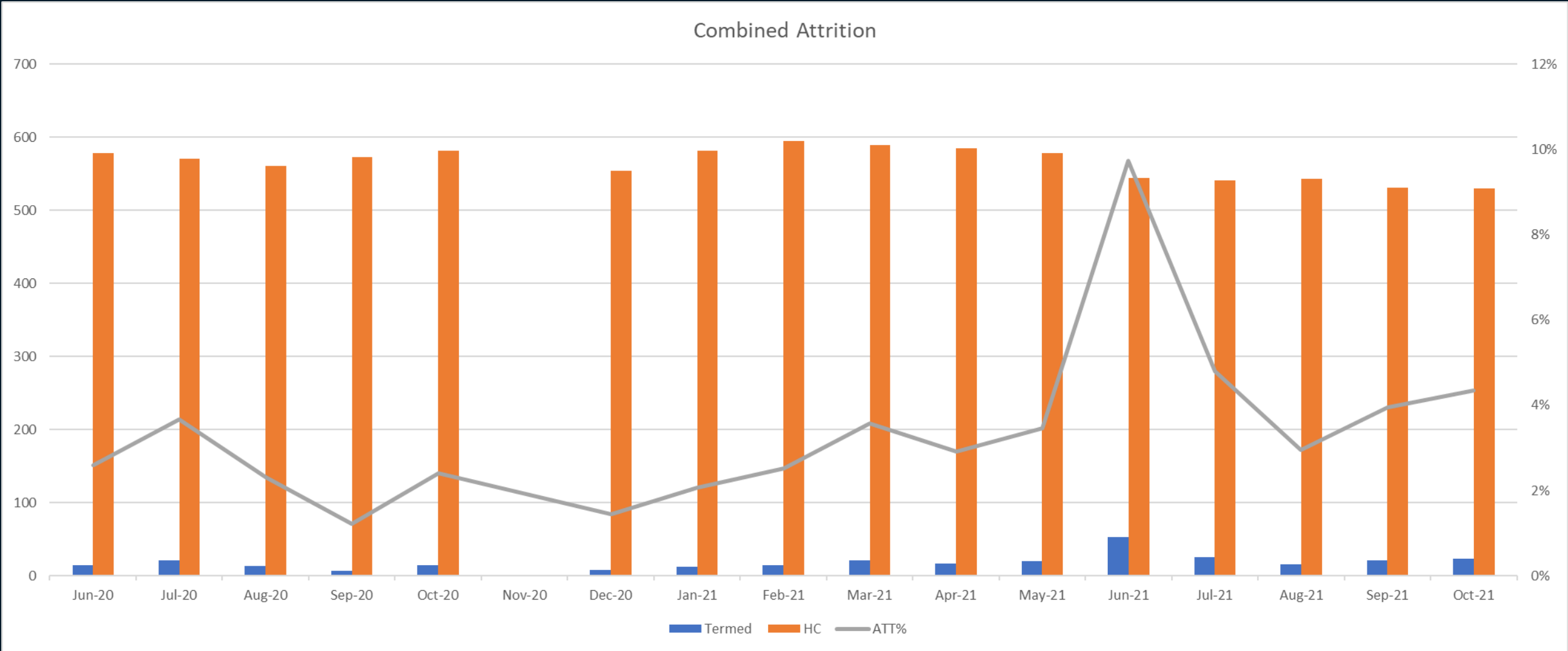
Division1	Position Type	Full Time	FT Goal	Percent Staffed	PT	PRN	LOA	OJI	Academy	FTO	Productive Headcount	Productive % Staffed
EAST	EMT	89	92	96.74%	2	7	2	0	6	9	74	80.49%
	Logistics	22	22	100.00%	0	0	0	0	0	0	22	100.00%
	Paramedic	76	89	85.39%	0	16	0	0	2	7	70	79.10%
	SSC	13	23	56.52%	0	2	0	0	1	0	12	53.48%
	<b>Total</b>	<b>200</b>	<b>226</b>	<b>88.50%</b>	<b>2</b>	<b>25</b>	<b>2</b>	<b>0</b>	<b>9</b>	<b>16</b>	<b>179</b>	<b>79.09%</b>
WEST	EMT	85	101	84.16%	4	11	0	3	7	4	75	73.91%
	Logistics	21	22	95.45%	0	2	1	0	0	0	20	92.27%
	Paramedic	71	113	62.83%	3	30	3	2	1	1	72	63.72%
	SSC	16	23	69.57%	0	2	0	0	0	3	13	57.83%
	<b>Total</b>	<b>193</b>	<b>259</b>	<b>74.52%</b>	<b>7</b>	<b>45</b>	<b>4</b>	<b>5</b>	<b>8</b>	<b>8</b>	<b>180</b>	<b>69.59%</b>
<b>Grand Total</b>		<b>393</b>	<b>485</b>	<b>81.03%</b>	<b>9</b>	<b>70</b>	<b>6</b>	<b>5</b>	<b>17</b>	<b>24</b>	<b>359</b>	<b>74.02%</b>

Attrition Rate by Position



## Attrition Rate By Position Month to Month – Operations/Coms (06/01/2020 – 10/31/2021)

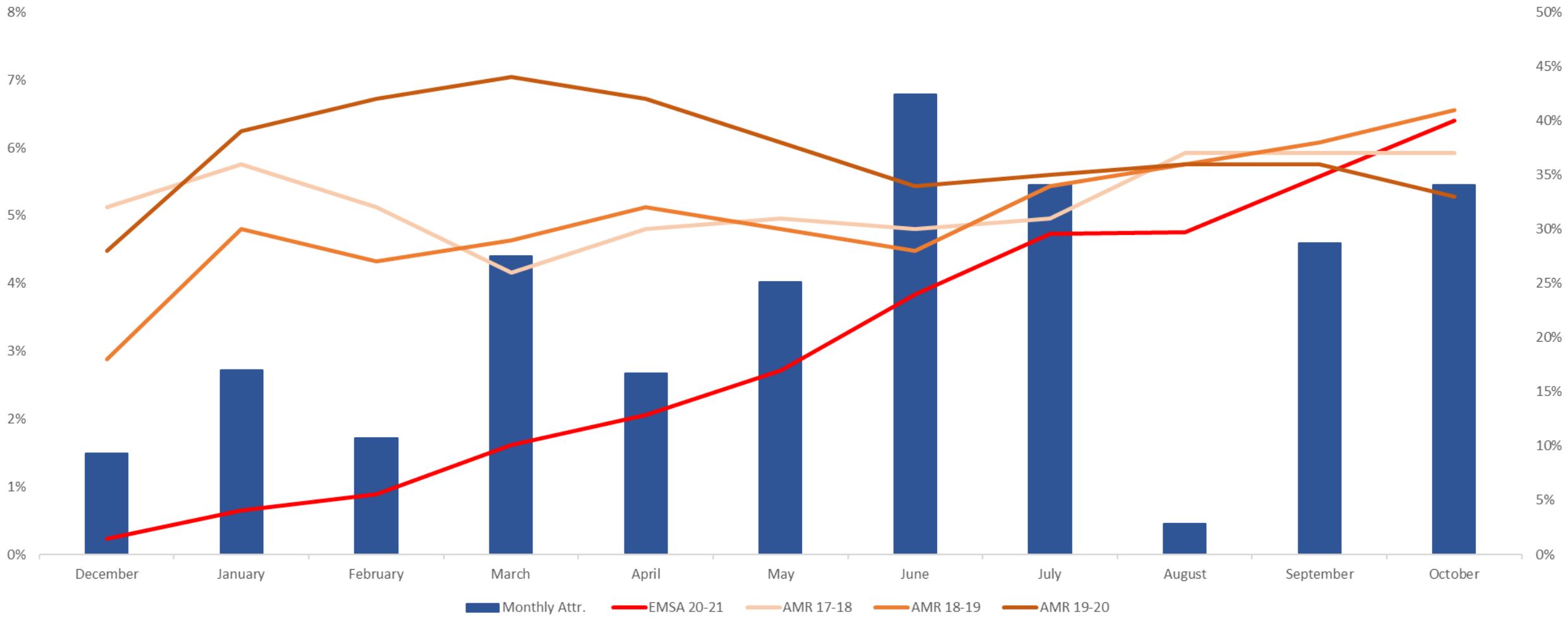
(Note that 11/2020 was removed as transitional adjustment in management and leadership would have skewed percentages)



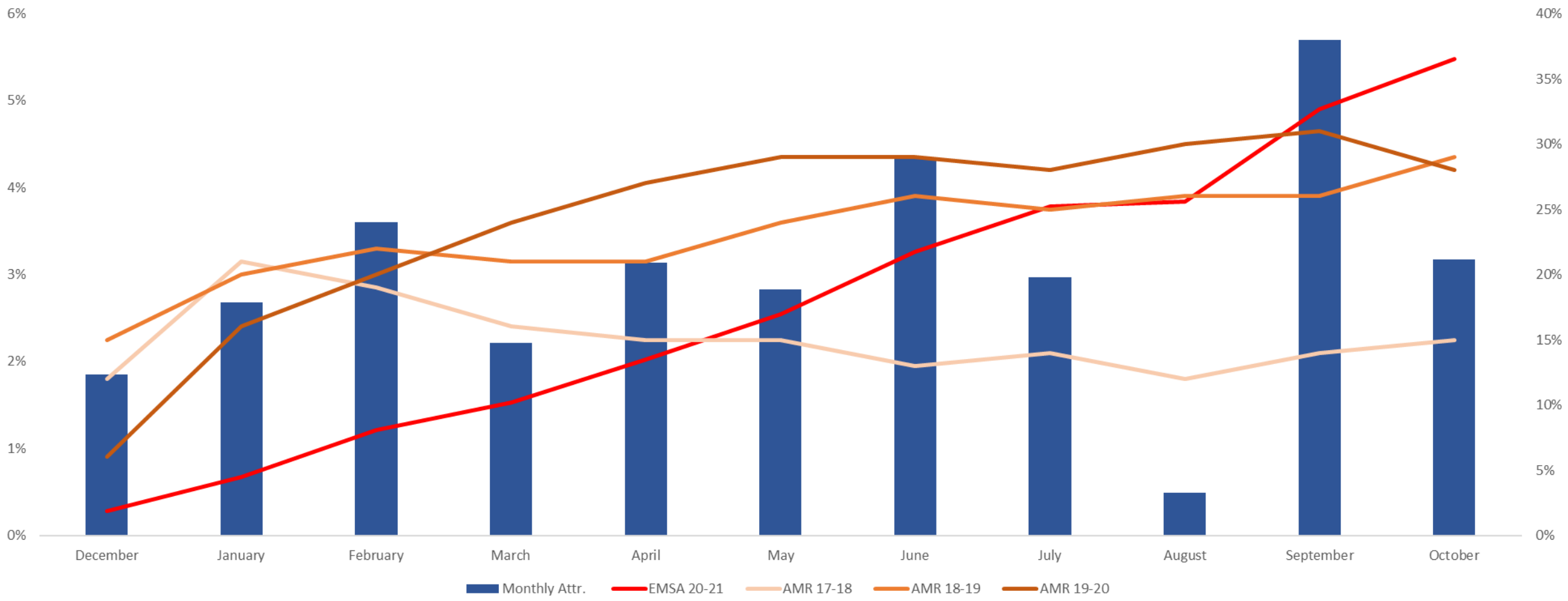
**Combined Attrition for Ops/Coms Positions Month to Month (06/01/2020 – 10/31/2021) – Attrition Rate 31%**

(Note that 11/2020 was removed as transitional adjustment in management and leadership would have skewed percentages)

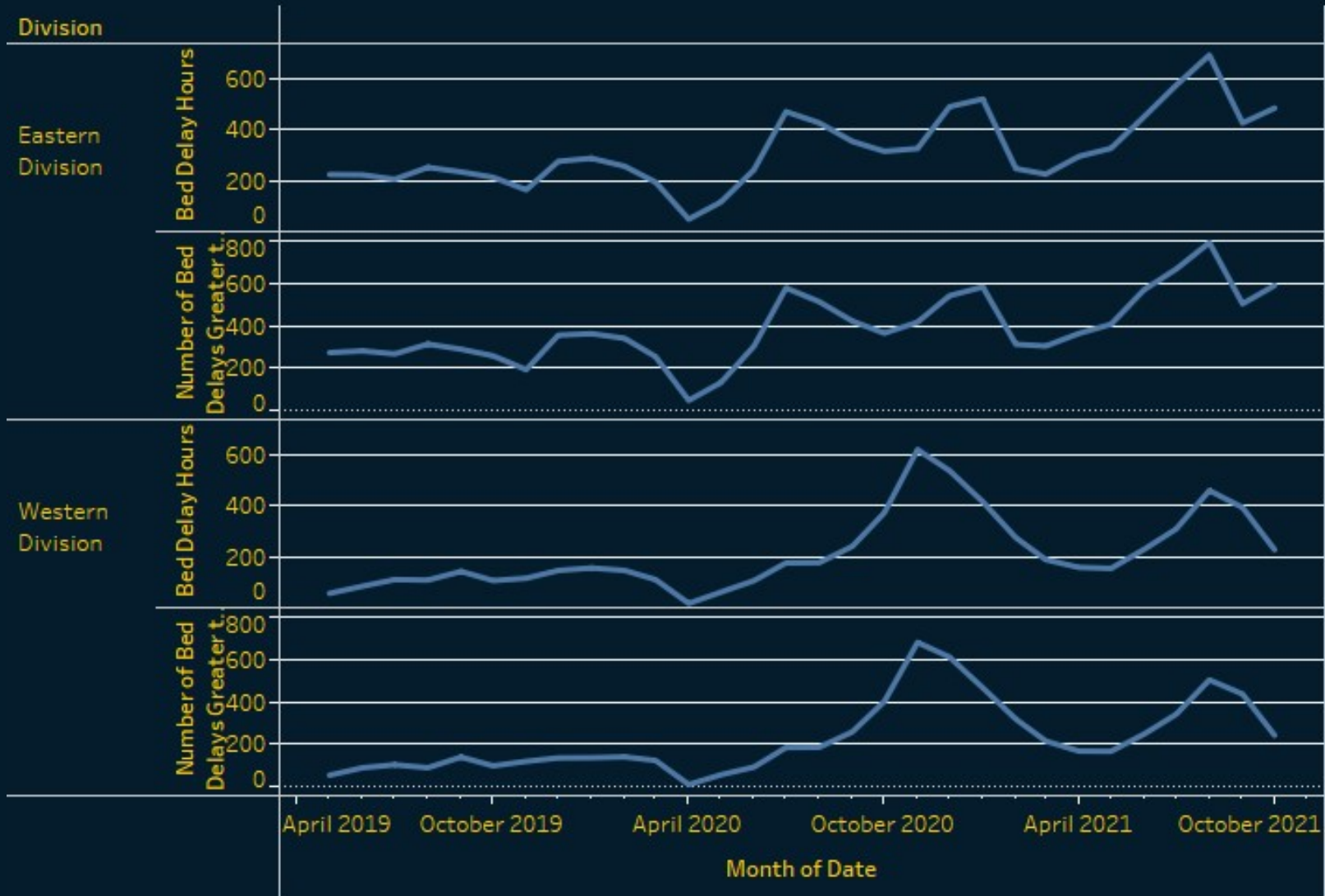
# EMT Monthly Attrition with Cumulative Attrition Percentage



## Paramedic Monthly Attrition with Cumulative Attrition Percentage

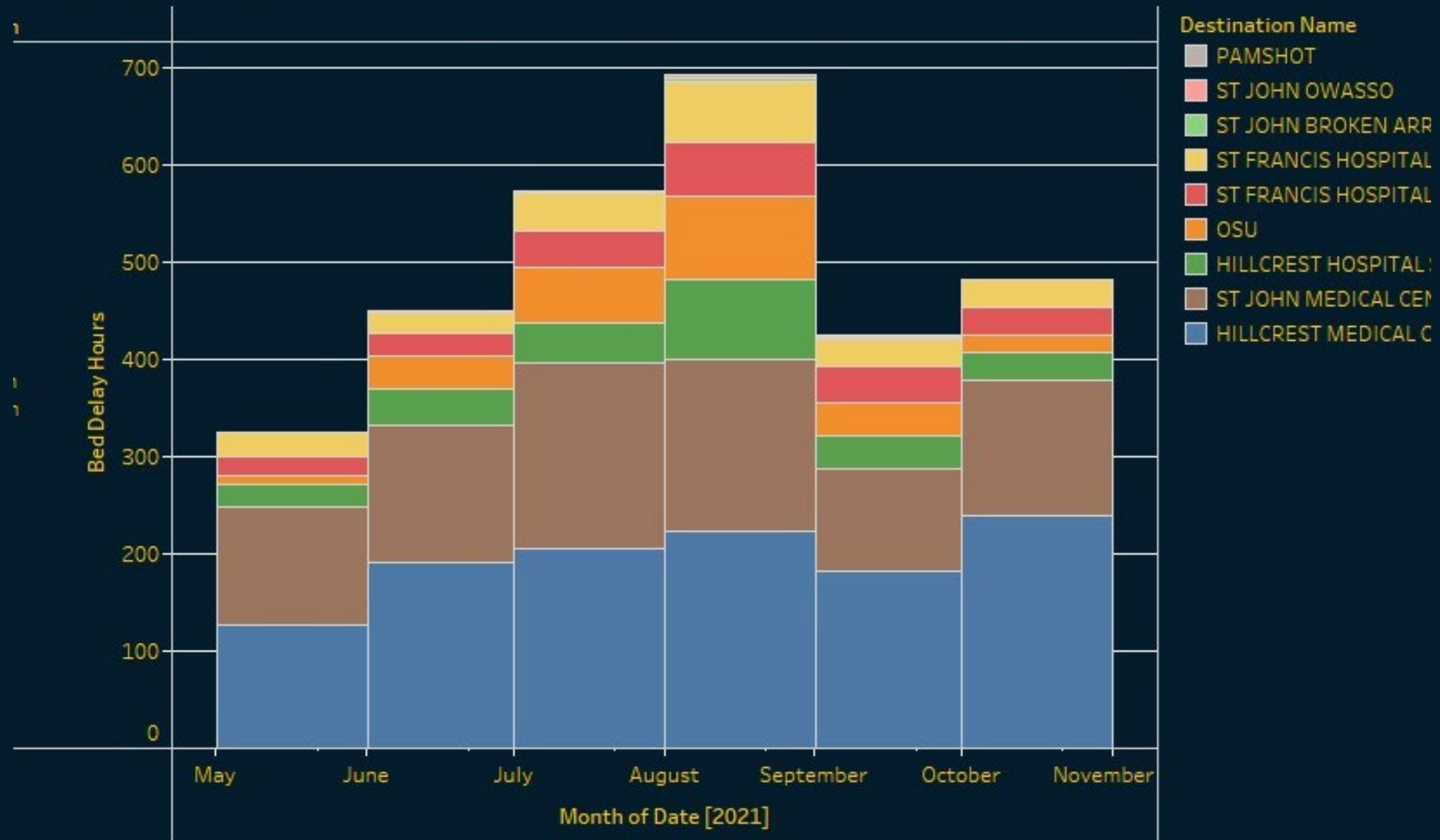


## Bed Delay Trends last 30 months



The trends of sum of Bed Delay Hours and Number of Bed Delays Greater than 20 Minutes for Date Month broken down by Division. The data is filtered on Date, which includes the last 30 months relative to 10/31/2021. The filter associated with this field ranges from 5/1/2019 to 10/31/2021. The view is filtered on Division, which keeps Eastern Division and Western Division.

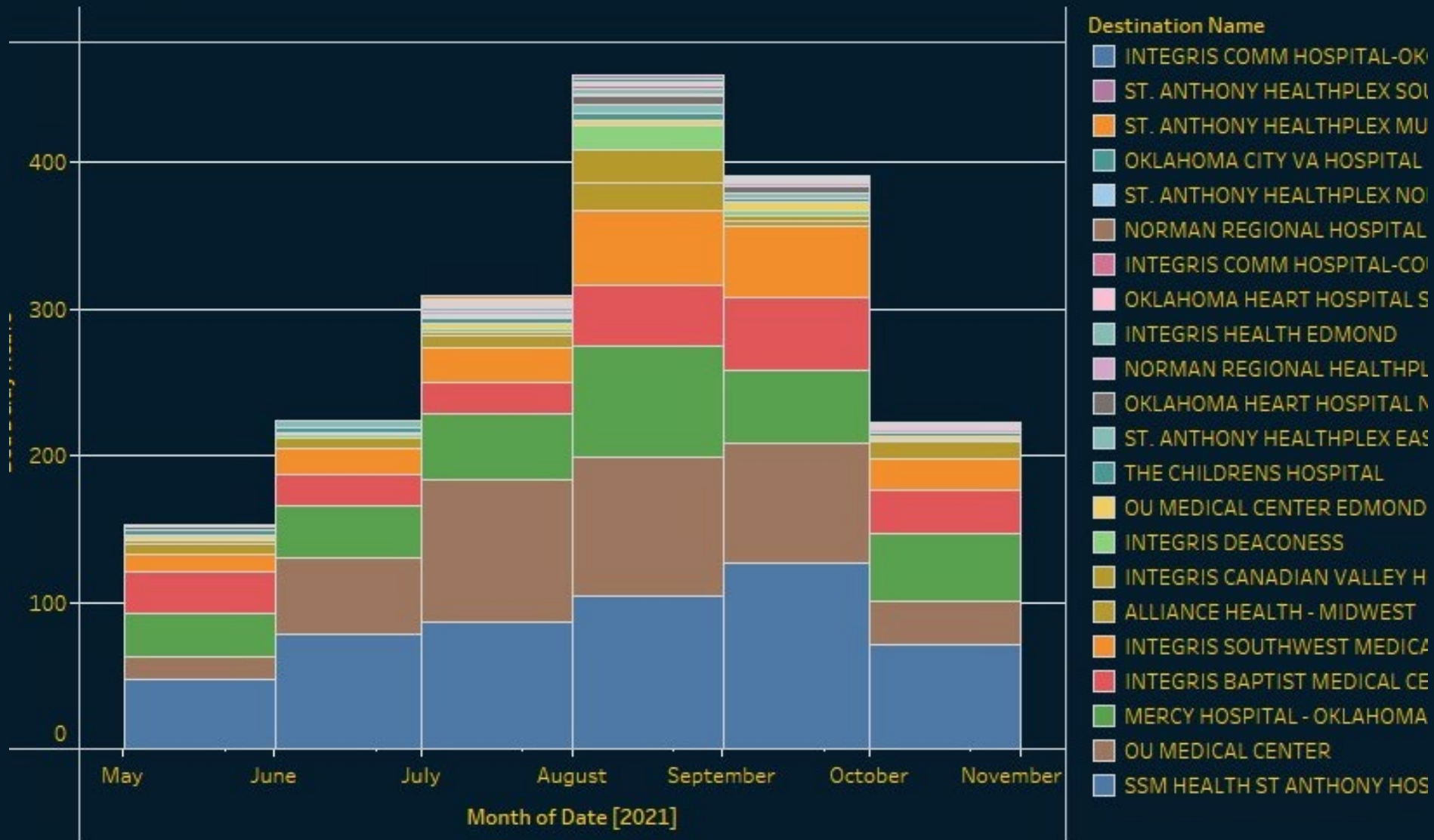
# Delay by Facility last 6 months East



of sum of Bed Delay Hours for Date Month broken down by Division. Color shows details about Destination Name. is filtered on Date, which includes the last 6 months relative to 10/31/2021. The filter associated with this field from 5/1/2021 to 10/31/2021. The view is filtered on Division and sum of Bed Delay Hours. The Division filter keeps Division. The sum of Bed Delay Hours filter includes values greater than or equal to 1.0.



## by Facility last 6 months West



Bed Delay Hours for Date Month broken down by Division. Color shows details about Destination Name. Filtered on Date, which includes the last 6 months relative to 10/31/2021. The filter associated with this field is Date from 10/1/2021 to 10/31/2021. The view is filtered on Division and sum of Bed Delay Hours. The Division filter keeps all divisions. The sum of Bed Delay Hours filter includes values greater than or equal to 1.0.