

# Operational Compliance Report

## October 2022

*Frank Gresh*

*Interim Chief Operating Officer*



**“To serve our communities’ pre-hospital needs through value-driven, compassionate, and clinically superior care.”**

# October 2022 Compliance Summary – Combined

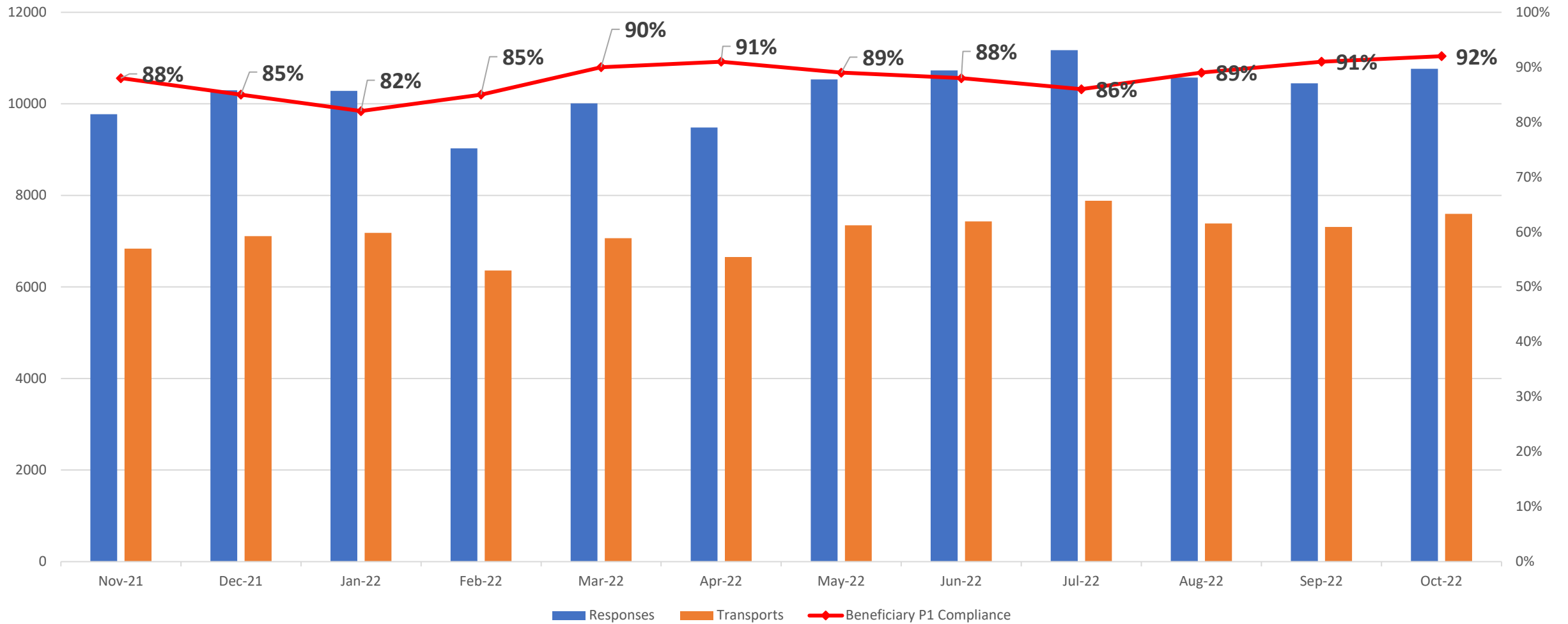
|                 | Priority 1   | Priority 2 | Priority 3 | Priority 4 |
|-----------------|--------------|------------|------------|------------|
| East Ben. Total | 92%          | 97%        | 91%        | 94%        |
| East NB Total   | Priority 1&2 | 87%        | 50%        | 100%       |
| West Ben. Total | 50%          | 74%        | 88%        | 63%        |
| West NB Total   | Priority 1&2 | 62%        | N/A        | 100%       |



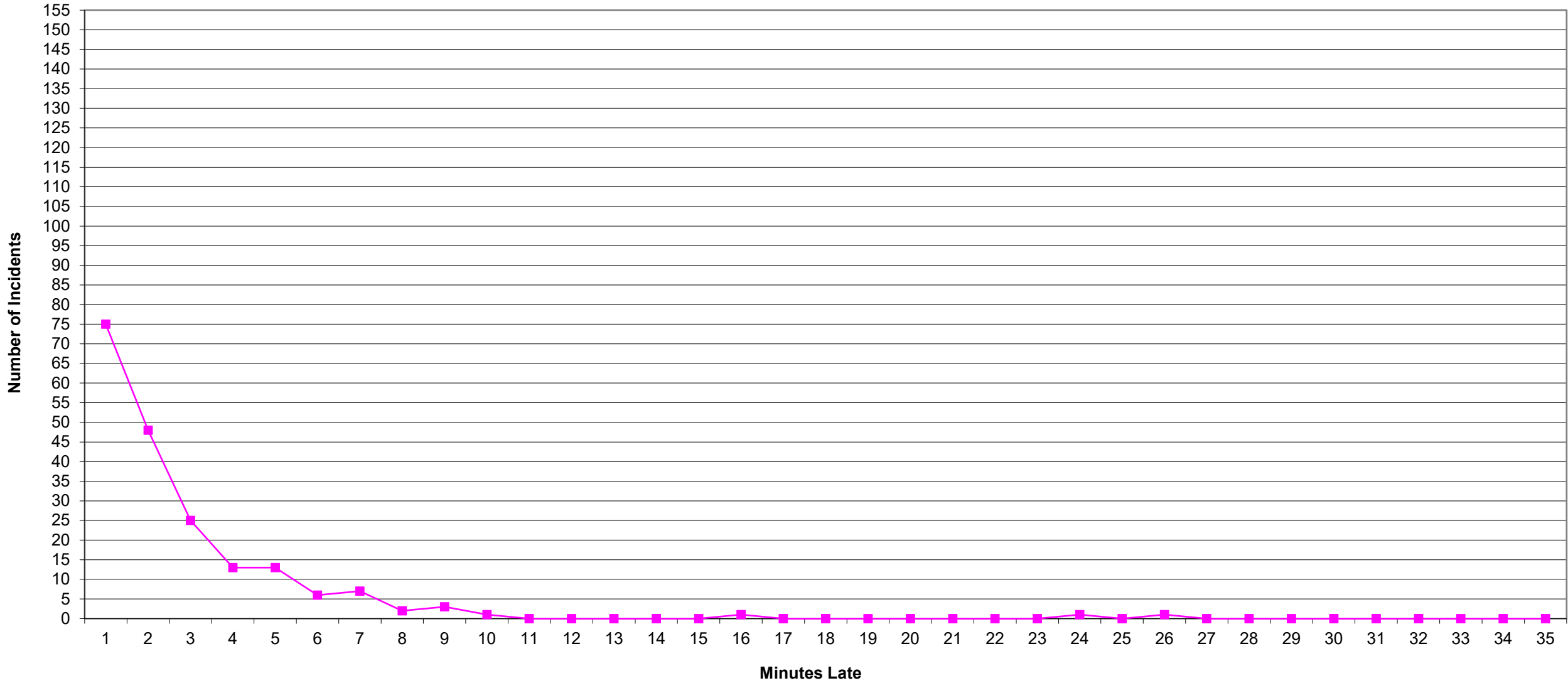
“To serve our communities’ pre-hospital needs through value-driven, compassionate, and clinically superior care.”

# P1 Compliance Trends – EASTERN DIVISION

East Beneficiary Response Time Compliance with Response and Transport Totals



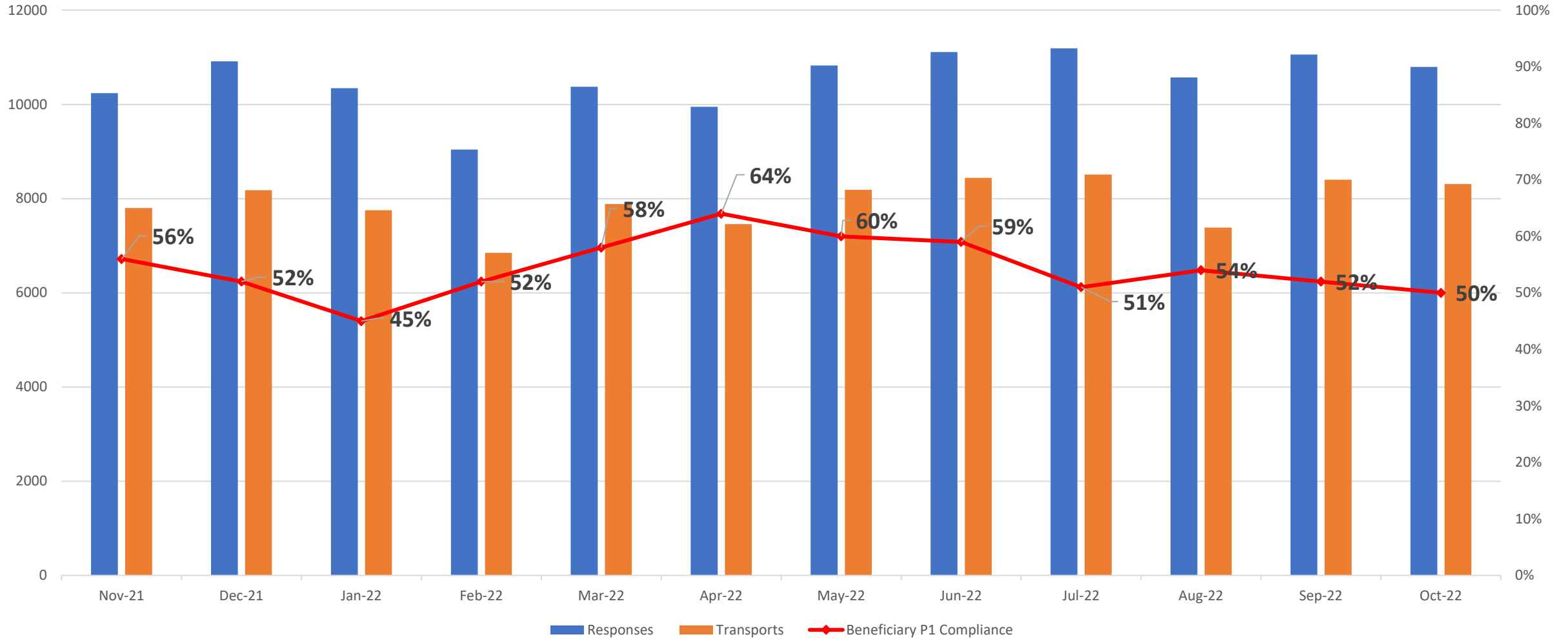
# Eastern Division Priority 1 Late Calls October 2022



**“To serve our communities’ pre-hospital needs through value-driven, compassionate, and clinically superior care.”**

# P1 Compliance Trends – WESTERN DIVISION

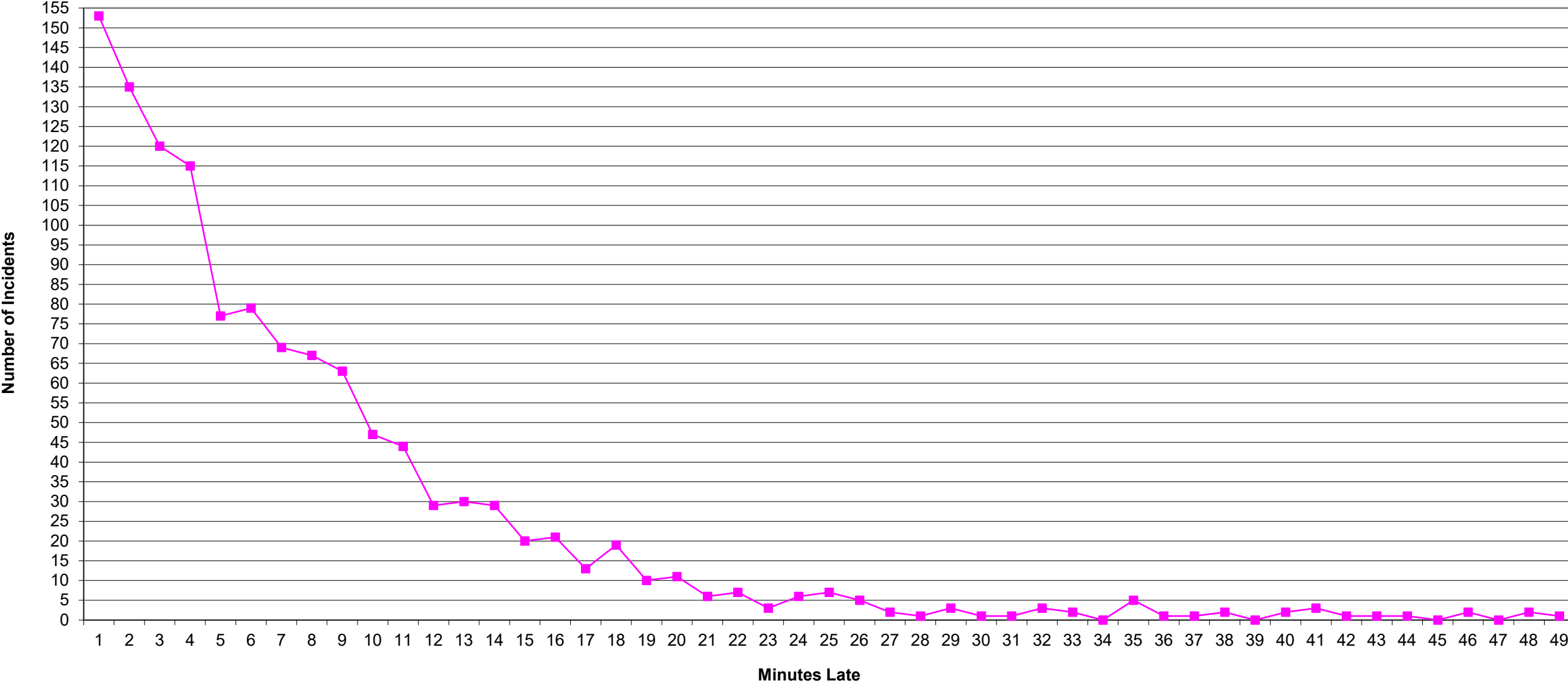
West Beneficiary Response Time Compliance with Response and Transport Totals



■ Responses ■ Transports —◆ Beneficiary P1 Compliance

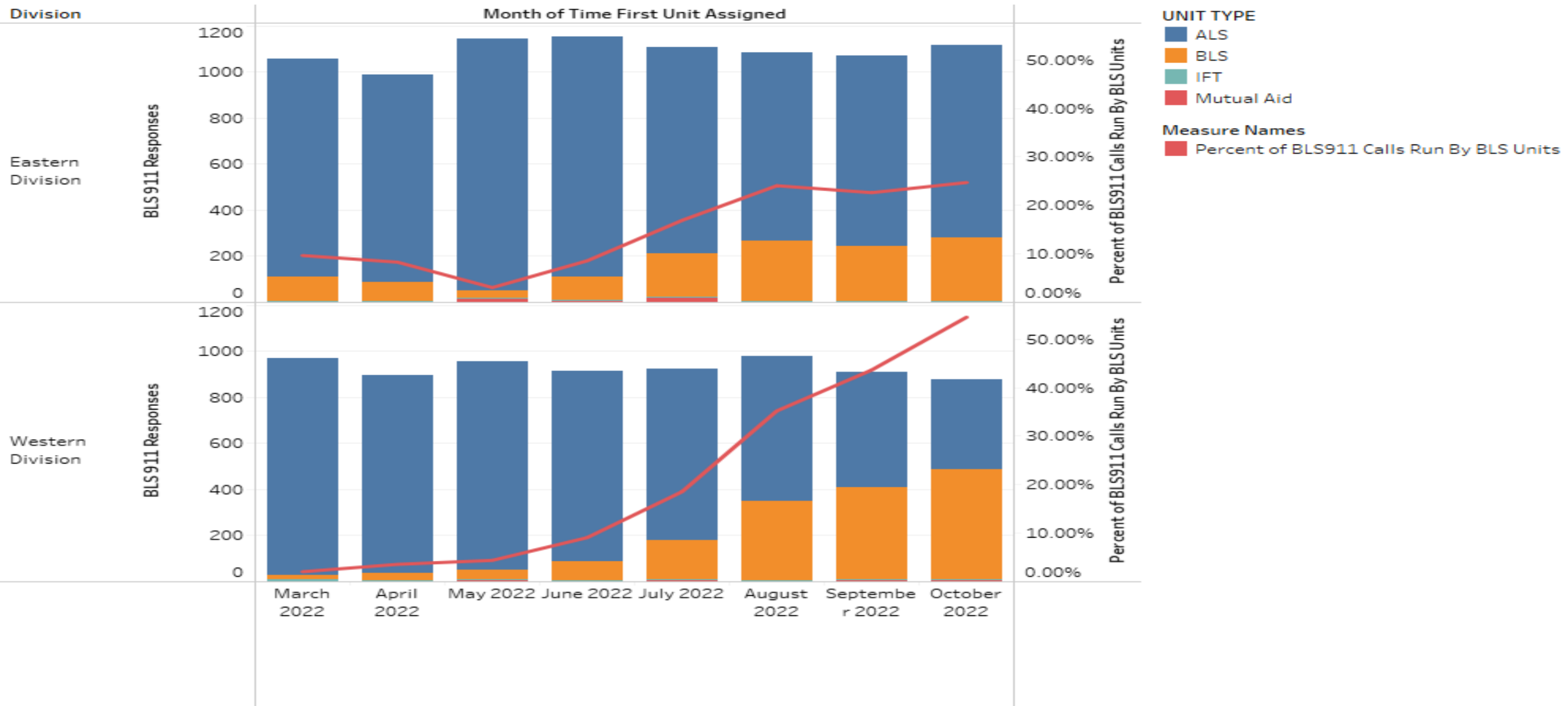


Western Division Priority 1 Late Calls  
October 2022



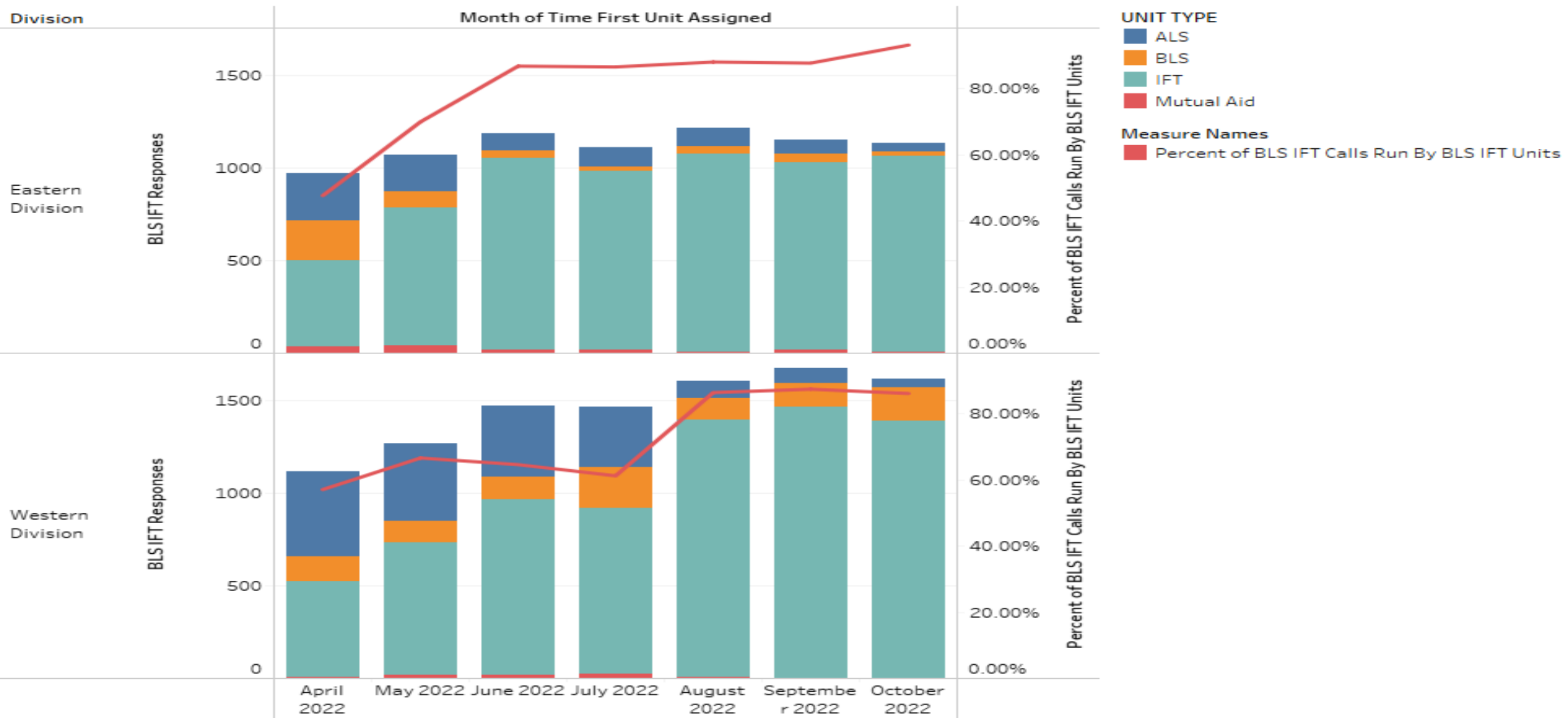
**“To serve our communities’ pre-hospital needs through value-driven, compassionate, and clinically superior care.”**

# BLS911 Utilization



The trends of BLS 911 Responses and Percent of BLS911 Calls Run By BLS Units for Time First Unit Assigned Month broken down by Division. For pane BLS 911 Responses: Color shows details about UNIT TYPE. For pane Percent of BLS911 Calls Run By BLS Units: Color shows details about Percent of BLS911 Calls Run By BLS Units. The data is filtered on Time First Unit Assigned, which includes the last 8 months relative to 10/31/2022. The filter associated with this field ranges from 3/1/2022 to 10/31/2022. The view is filtered on Division and Time First Unit Assigned Month. The Division filter keeps Eastern Division and Western Division. The Time First Unit Assigned Month filter excludes November 2021.

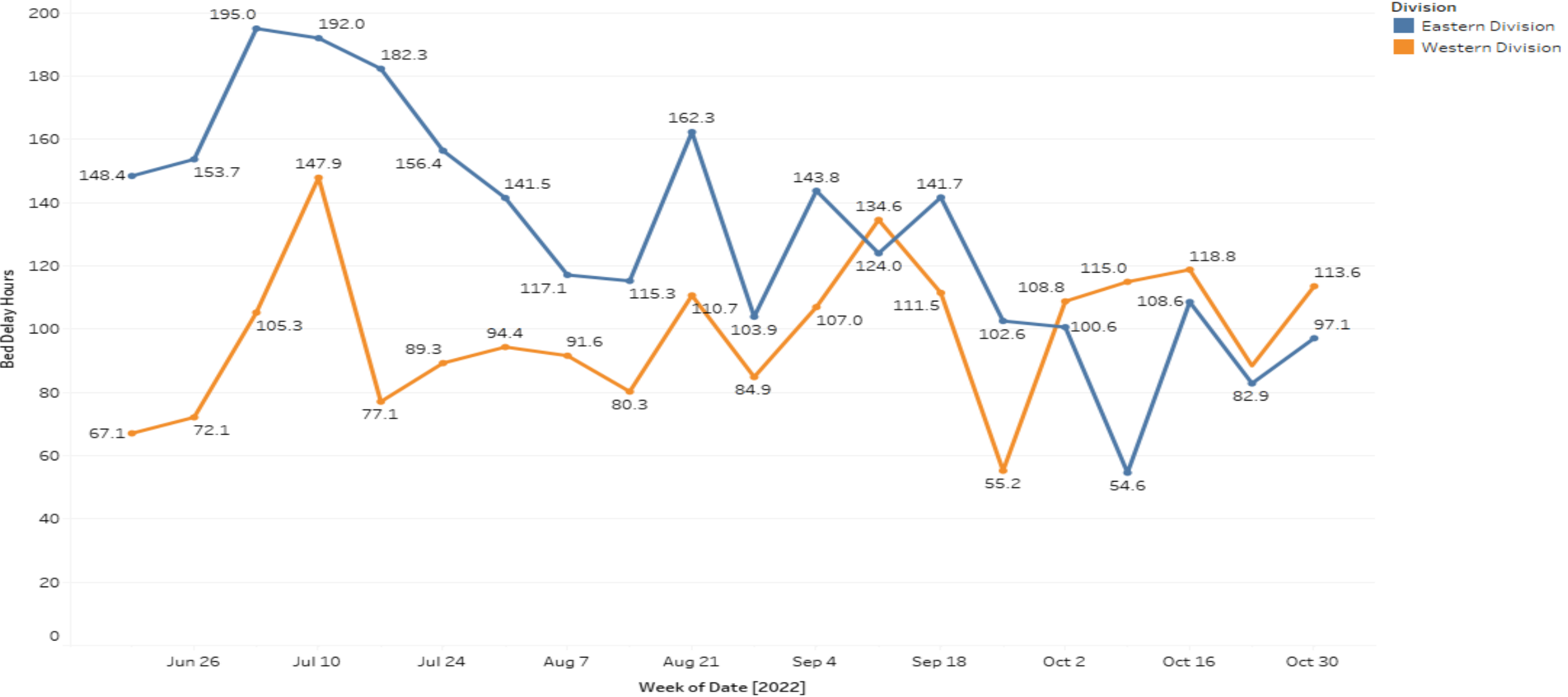
# BLS IFT Unit Utilization



The trends of BLS IFT Responses and Percent of BLS IFT Calls Run By BLS IFT Units for Time First Unit Assigned Month broken down by Division. For pane BLS IFT Responses: Color shows details about UNIT TYPE. For pane Percent of BLS IFT Calls Run By BLS IFT Units: Color shows details about Percent of BLS IFT Calls Run By BLS IFT Units. The data is filtered on Time First Unit Assigned, which includes the last 7 months relative to 10/31/2022. The filter associated with this field ranges from 4/1/2022 to 10/31/2022. The view is filtered on Division, which keeps Eastern Division and Western Division.



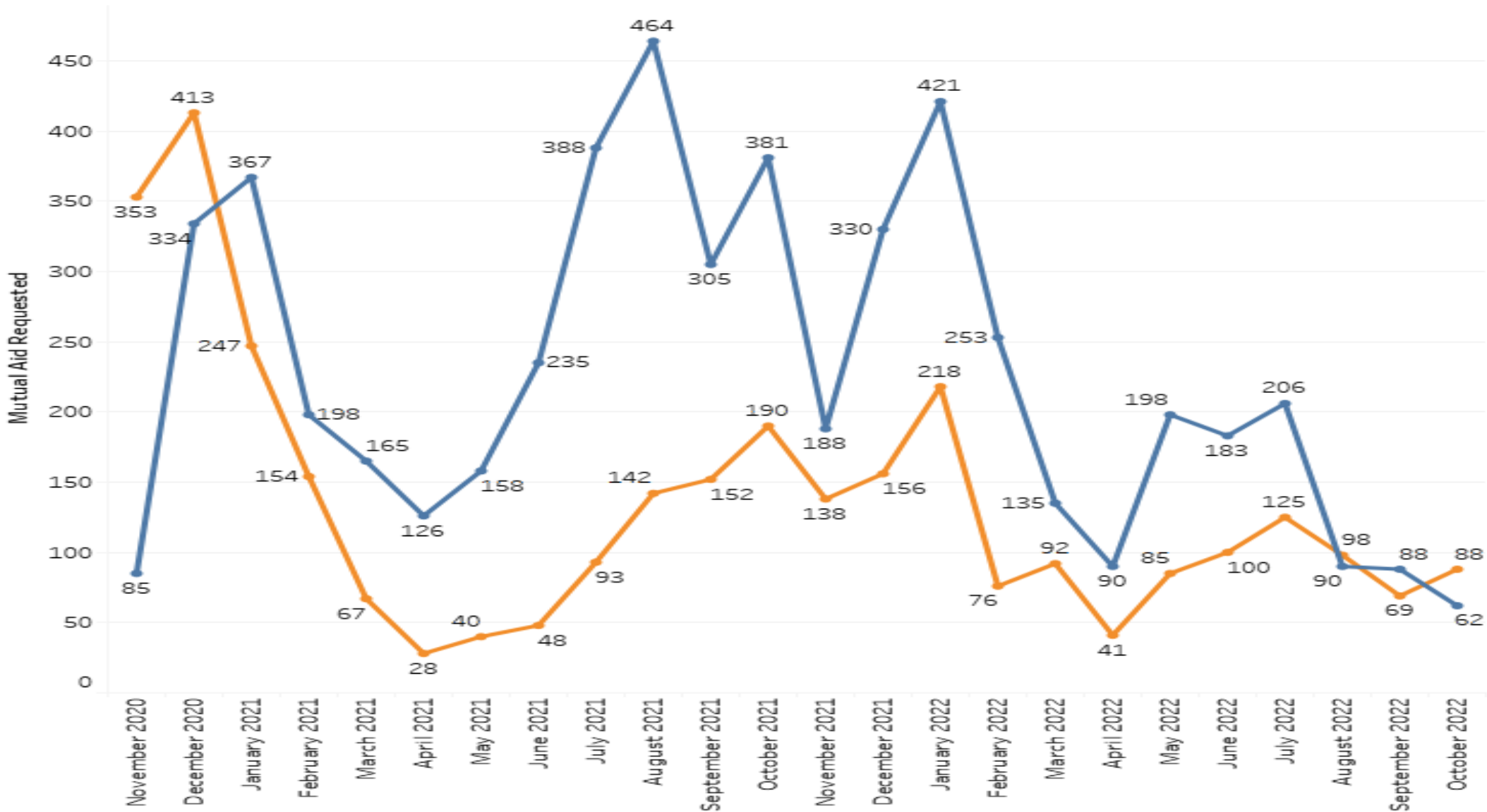
# BED DELAY – BOTH DIVISIONS



The trend of sum of Bed Delay Hours for Date Week. Color shows details about Division. The marks are labeled by sum of Bed Delay Hours. The data is filtered on Bed Delay Minutes and Date. The Bed Delay Minutes filter includes values greater than or equal to 1. The Date filter includes the last 20 weeks relative to 11/5/2022. The filter associated with this field ranges from 6/19/2022 to 11/5/2022. The view is filtered on Division, which keeps Eastern Division and Western Division.

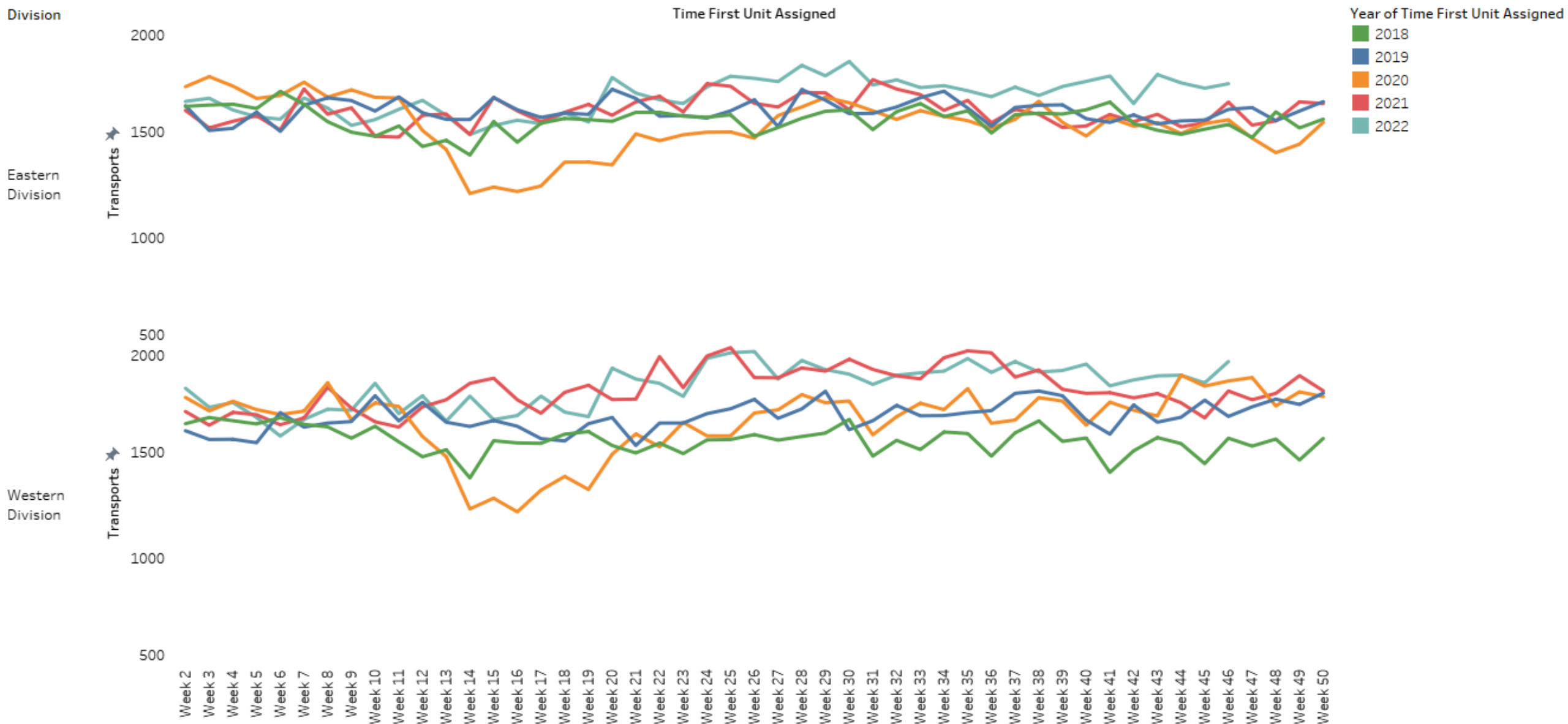
# Mutual Aid Utilization – Both Divisions

Division  
■ Eastern Division  
■ Western Division



The trend of Mutual Aid Requested for Time Assigned Month. Color shows details about Division. The data is filtered on Time Assigned, which includes the last 24 months relative to 10/31/2022. The filter associated with this field ranges from 11/1/2020 to 10/31/2022. The view is filtered on Division, which keeps Eastern Division and Western Division.

# Year over Year by week



The trend of Transports for Time First Unit Assigned Week broken down by Division. Color shows details about Time First Unit Assigned Year. The data is filtered on Time First Unit Assigned, which includes the last 5 years relative to 10/31/2022. The filter associated with this field ranges from 1/1/2018 to 12/31/2022. The view is filtered on Division, Time First Unit Assigned Week and Exclusions (Division,WEEK(Time First Unit Assigned),YEAR(Time First Unit Assigned)). The Division filter keeps Eastern Division and Western Division. The Time First Unit Assigned Week filter has multiple members selected. The Exclusions (Division,WEEK(Time First Unit Assigned),YEAR(Time First Unit Assigned)) filter keeps 1,758 members.