

EMSA



“To serve our communities’ pre-hospital needs through value-driven, compassionate, and clinically superior care.”

Operational Compliance Report February 2023

Christopher Jenkins
Director of Business Analytics



“To serve our communities’ pre-hospital needs through value-driven, compassionate, and clinically superior care.”

February 2023 Compliance Summary – Combined

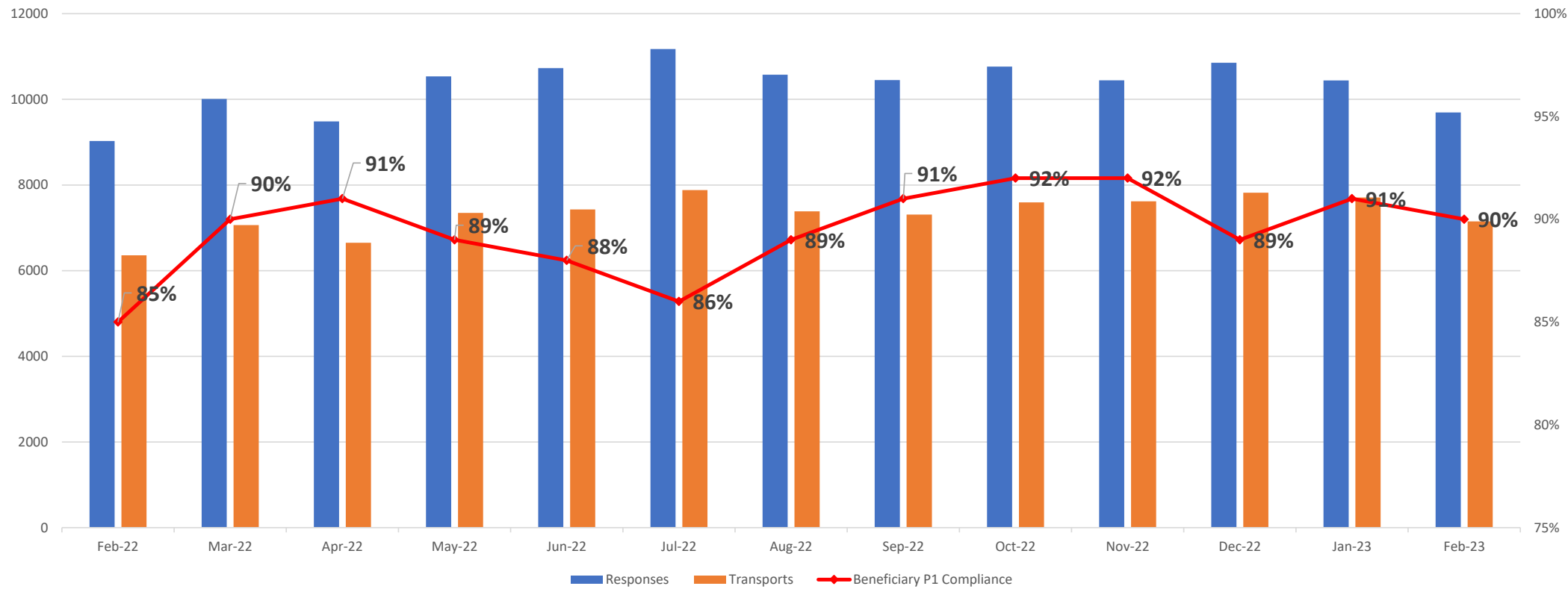
	Priority 1	Priority 2	Priority 3	Priority 4
East Ben. Total	90%	92%	79%	100%
East NB Total	Priority 1&2	74%	100%	N/A
West Ben. Total	84%	96%	82%	81%
West NB Total	73%	93%	78%	N/A



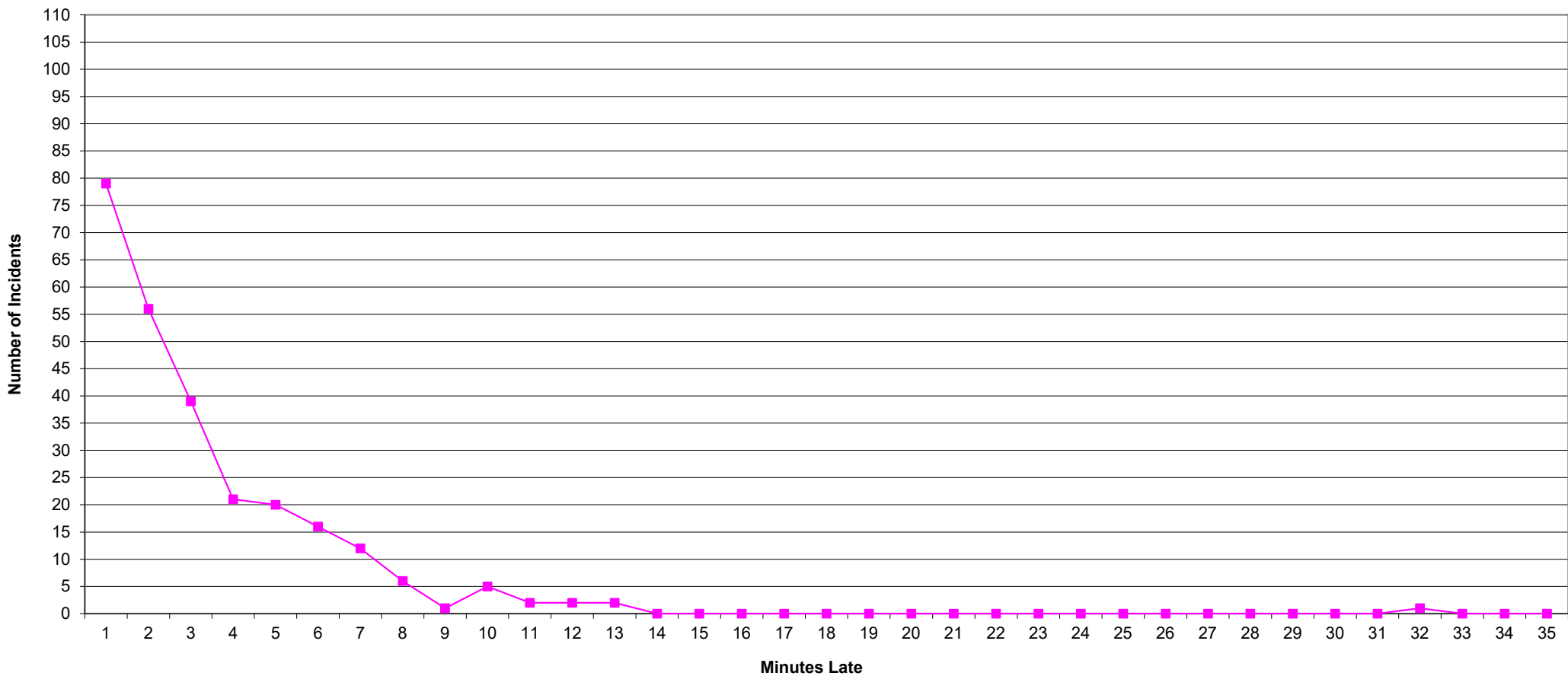
“To serve our communities’ pre-hospital needs through value-driven, compassionate, and clinically superior care.”

P1 Compliance Trends – EASTERN DIVISION

East Beneficiary Response Time Compliance with Response and Transport Totals



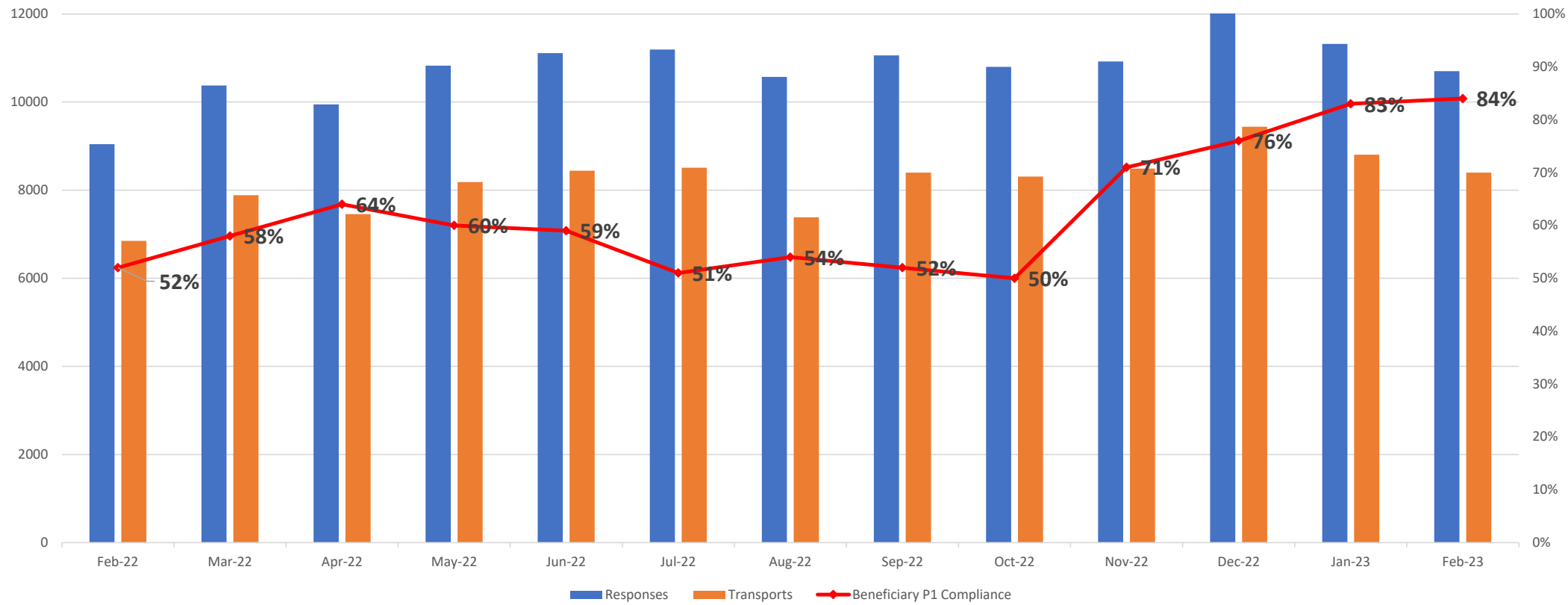
Eastern Division Priority 1 Late Calls February 2023



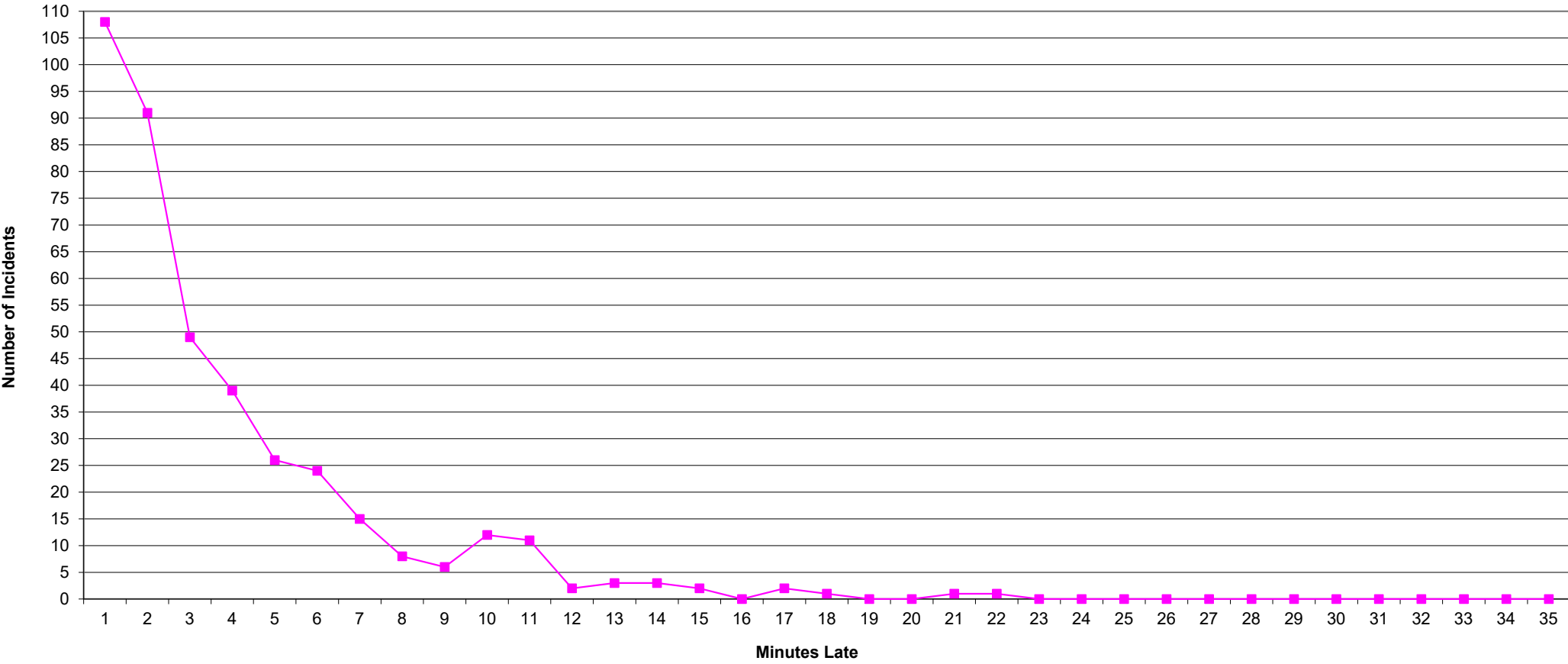
“To serve our communities’ pre-hospital needs through value-driven, compassionate, and clinically superior care.”

P1 Compliance Trends – WESTERN DIVISION

West Beneficiary Response Time Compliance with Response and Transport Totals



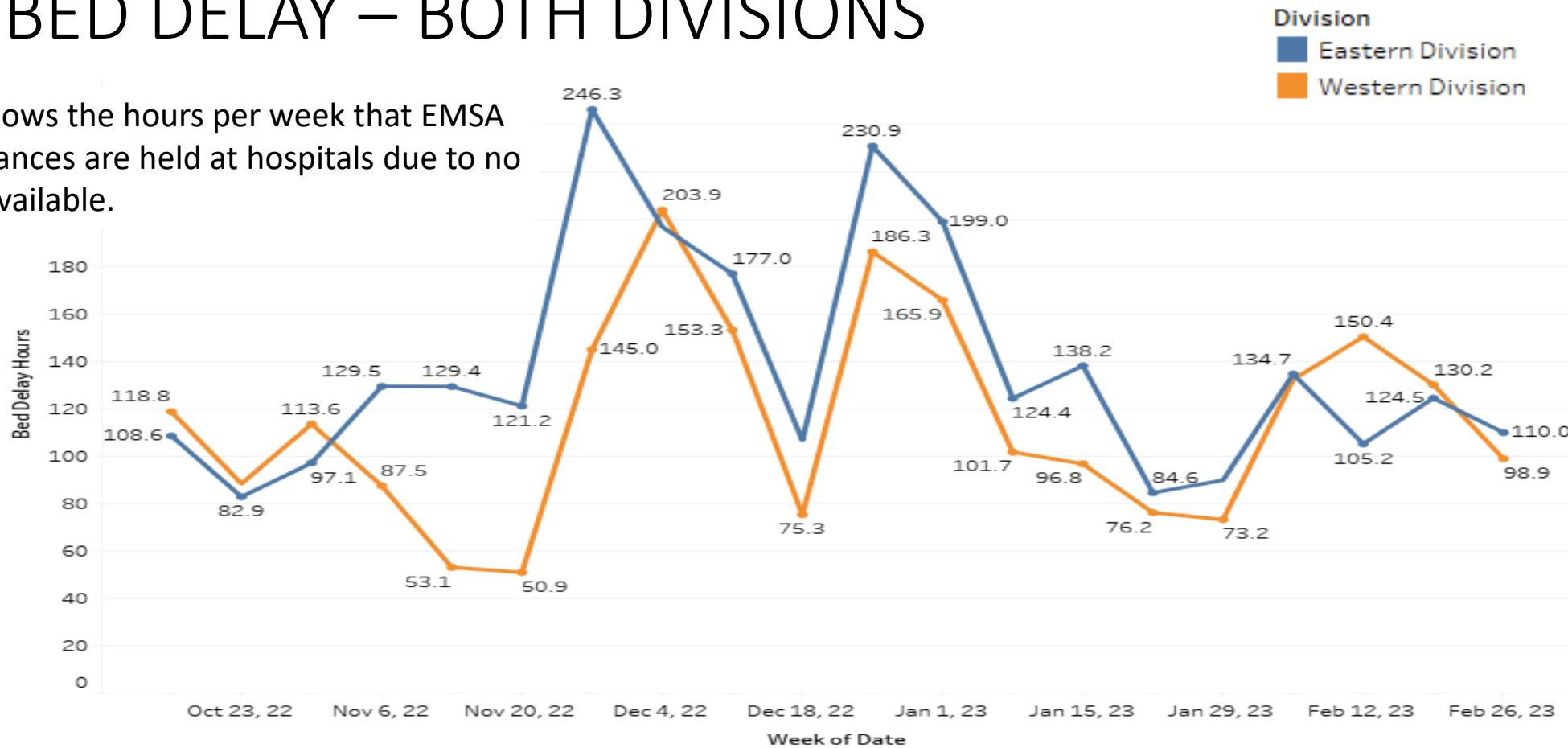
**Western Division Priority 1 Late Calls
February 2023**



“To serve our communities’ pre-hospital needs through value-driven, compassionate, and clinically superior care.”

BED DELAY – BOTH DIVISIONS

This shows the hours per week that EMSA ambulances are held at hospitals due to no beds available.



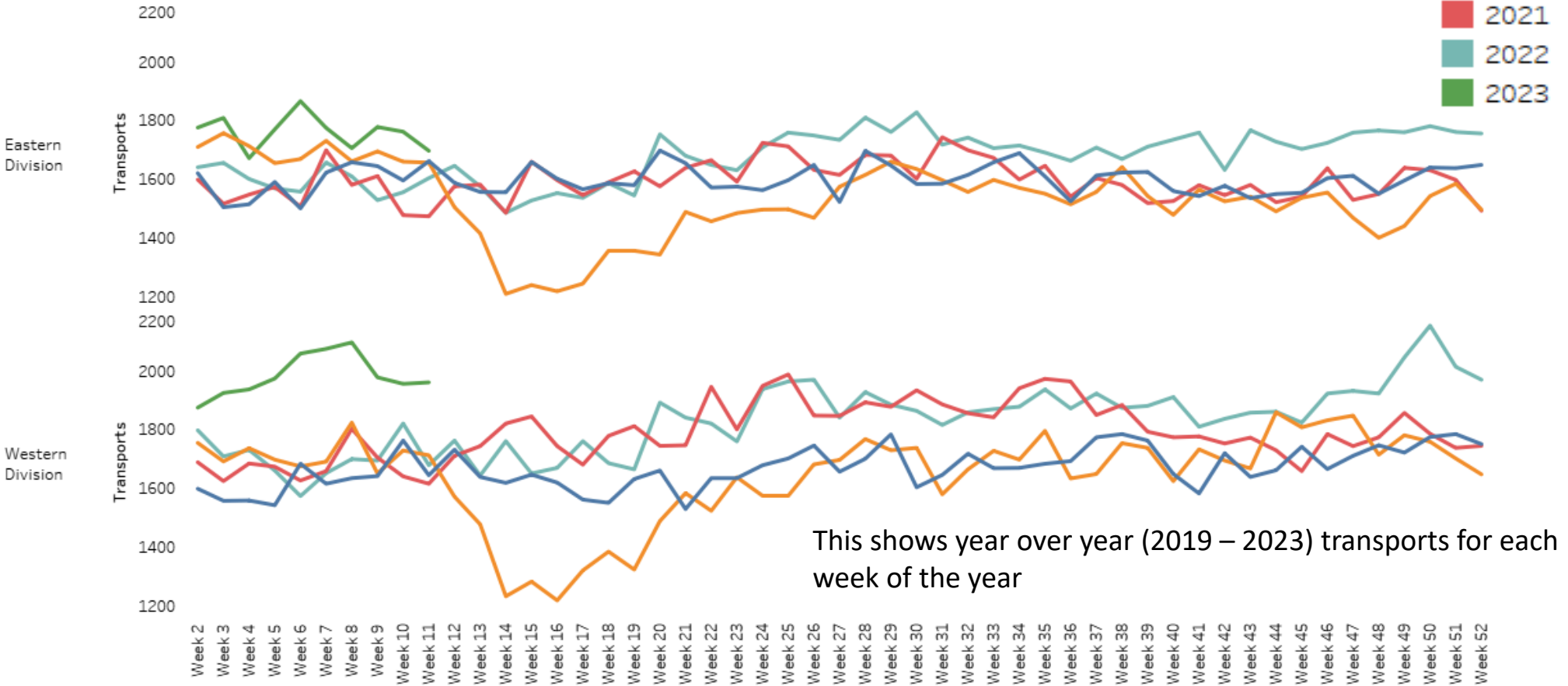
“To serve our communities’ pre-hospital needs through value-driven, compassionate, and clinically superior care.”

Year over Year Volume – Both Divisions

- 2019
- 2020
- 2021
- 2022
- 2023

Division

Time First Unit Assigned



This shows year over year (2019 – 2023) transports for each week of the year



“To serve our communities’ pre-hospital needs through value-driven, compassionate, and clinically superior care.”

Headcount Dashboard



		FT Goal	Full Time	PT	Headcount Percent
EAST	911 - EMT	89	117	9	137%
	Communications	23	20	0	87%
	IFT - EMT	16	3	2	25%
	Logistics	22	23	2	109%
	Paramedic	75	62	18	95%
	Total		225	225	31
WEST	911 - EMT	98	104	21	117%
	Communications	23	20	1	89%
	IFT - EMT	20	2	2	15%
	Logistics	22	23	5	116%
	Paramedic	80	58	8	78%
	Total		243	207	37
Grand Total		468	432	68	100%

**Not Including Contract Paramedics