

Patient Financial Services Report February 2019

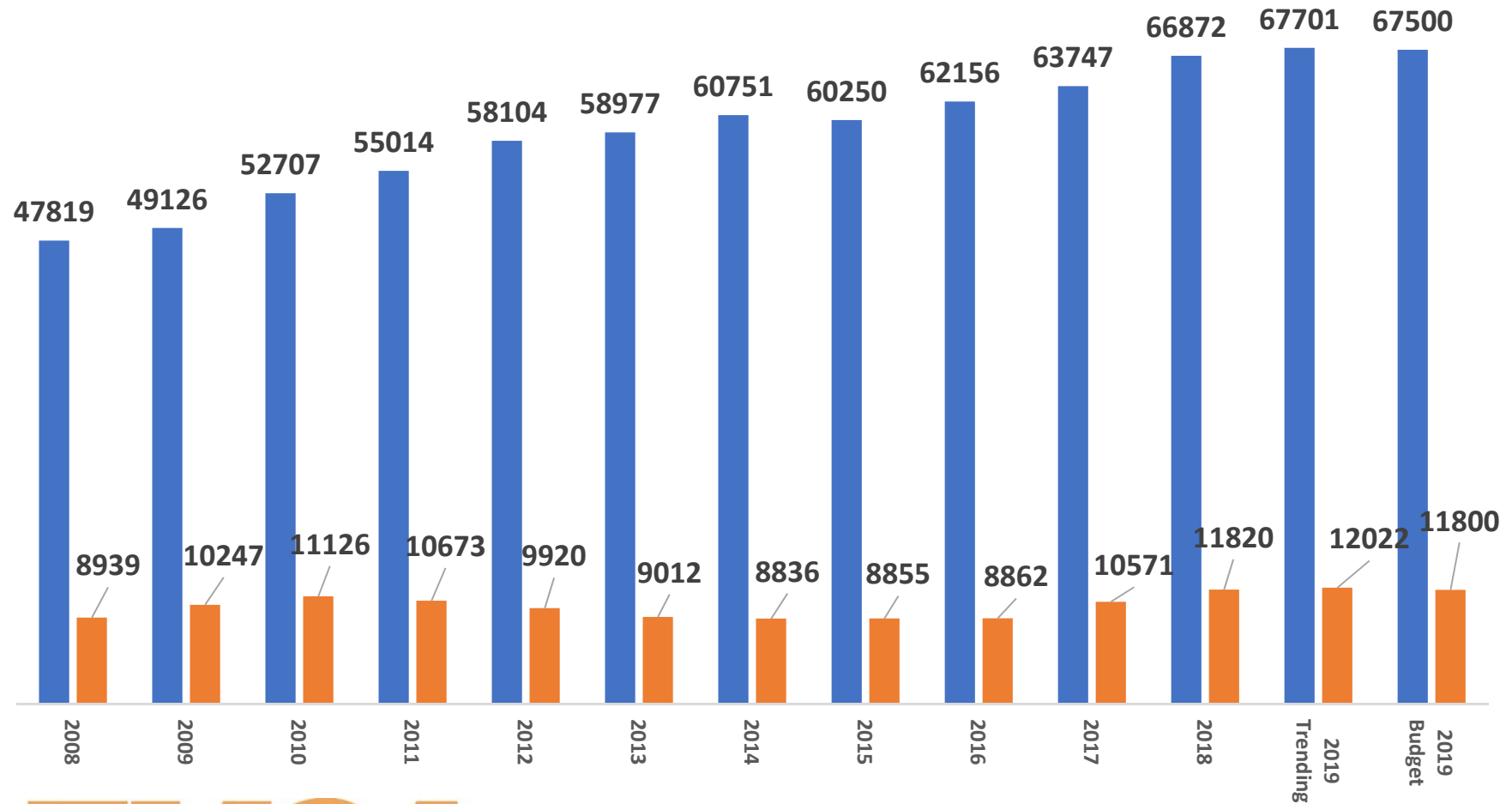
*Angela McLain, MA, RHIA
Chief Compliance/Revenue Officer*



“To serve our communities’ pre-hospital needs through value-driven, compassionate, and clinically superior care.”

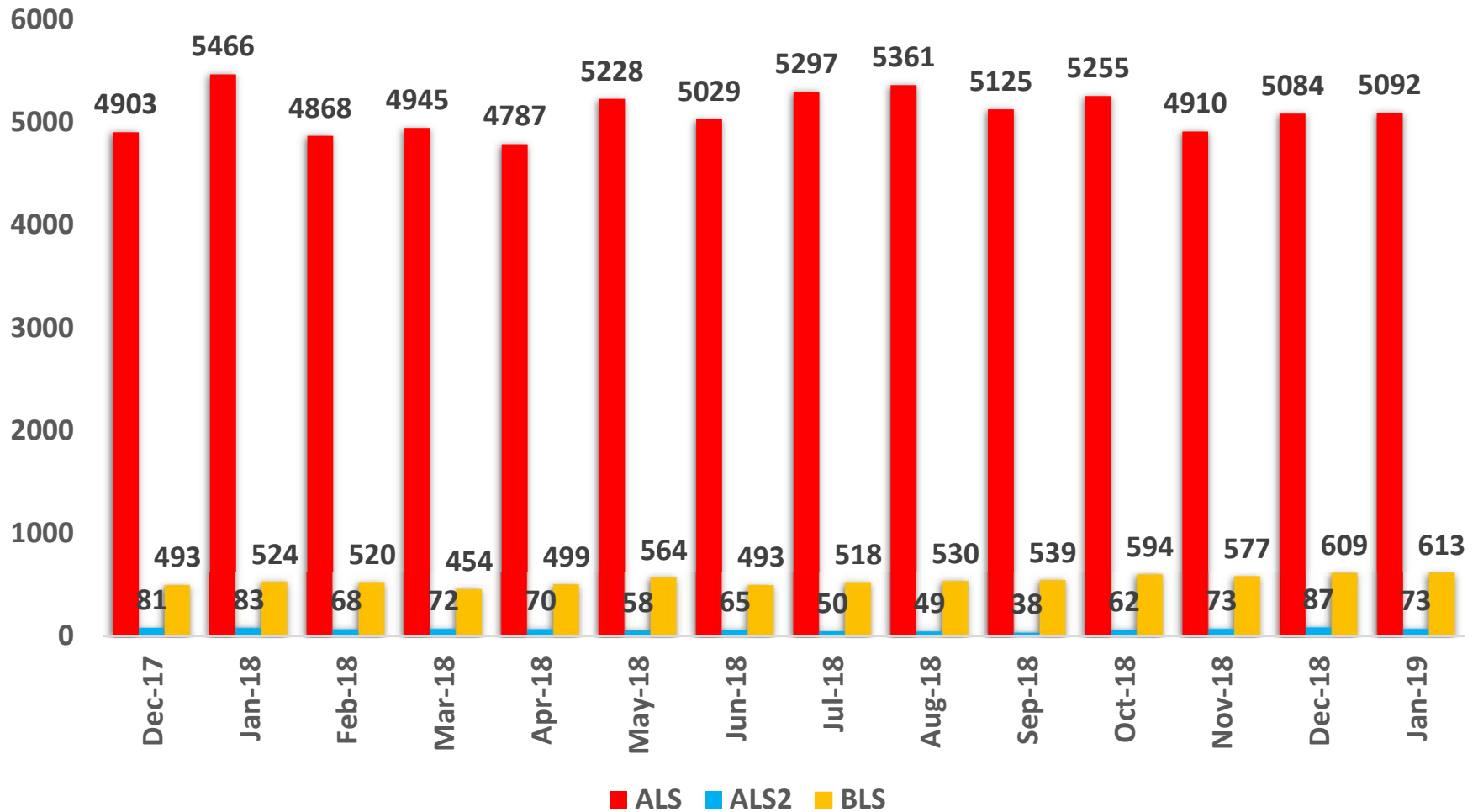
EMSA EASTERN DIVISION CALL VOLUME

■ Emergency ■ Non-Emergency



“To serve our communities’ pre-hospital needs through value-driven, compassionate, and clinically superior care.”

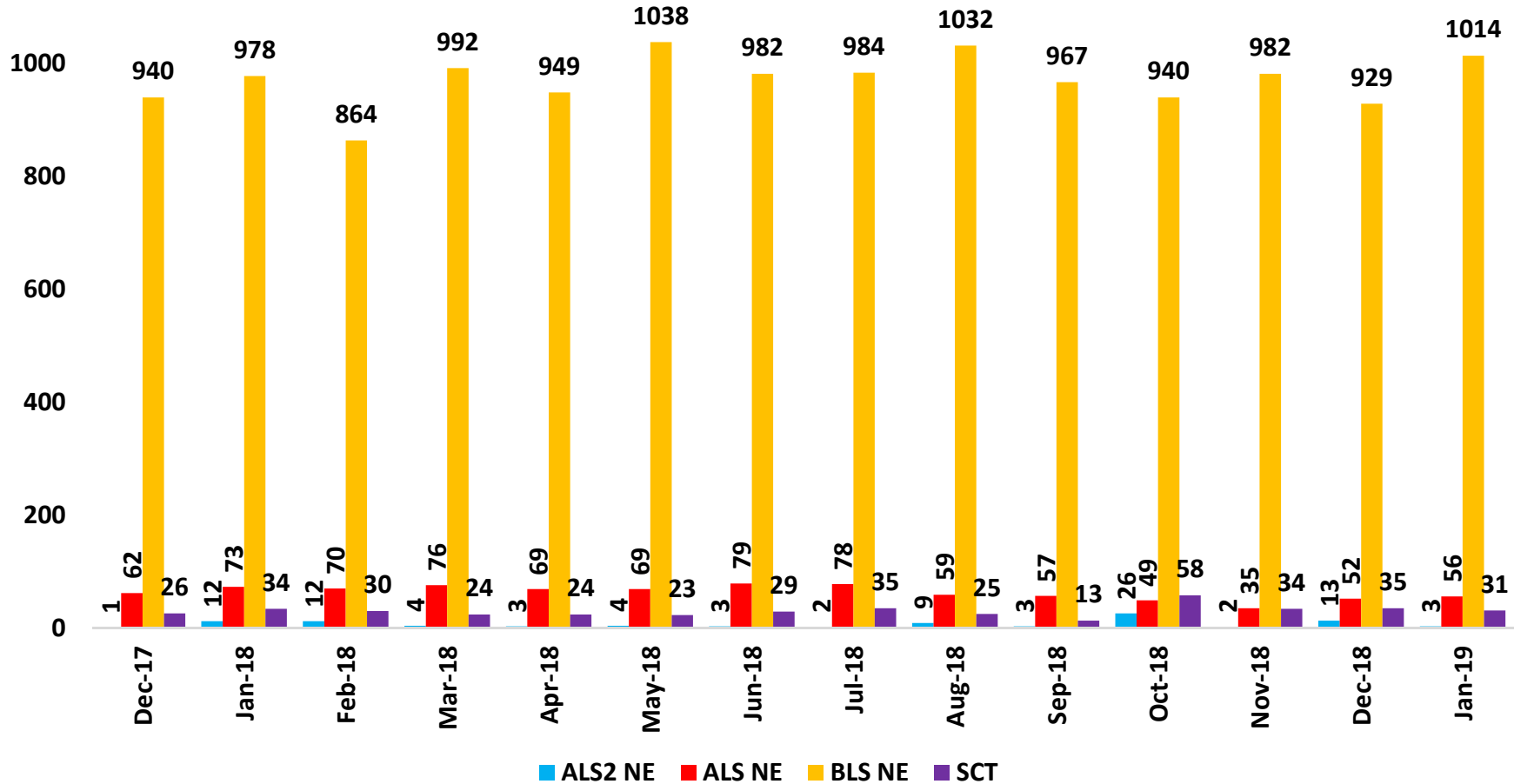
EMSA EASTERN DIVISION EMERGENCY CALLS



“To serve our communities’ pre-hospital needs through value-driven, compassionate, and clinically superior care.”

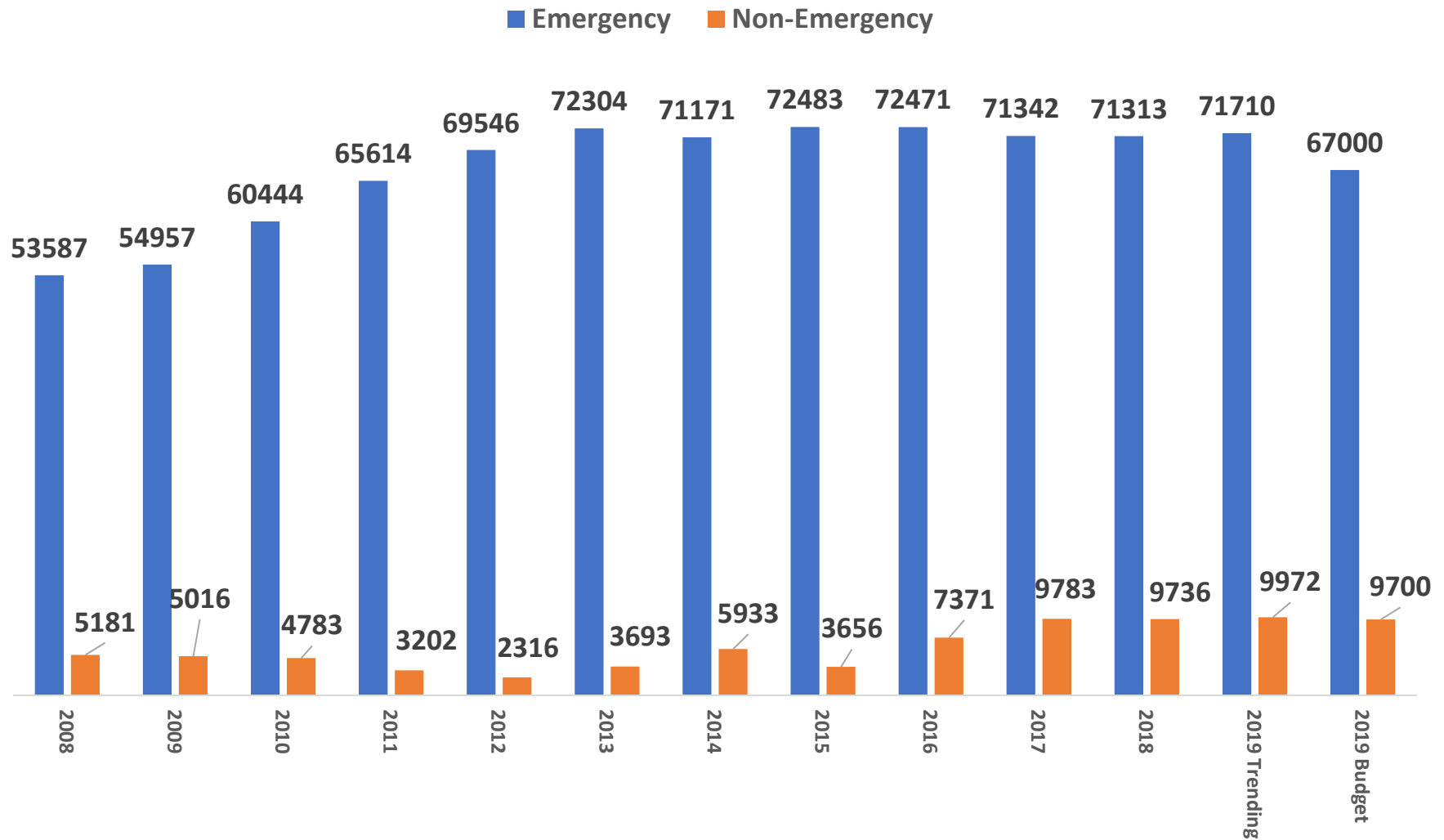
EMSA EASTERN DIVISION NON-EMERGENCY CALLS

1200



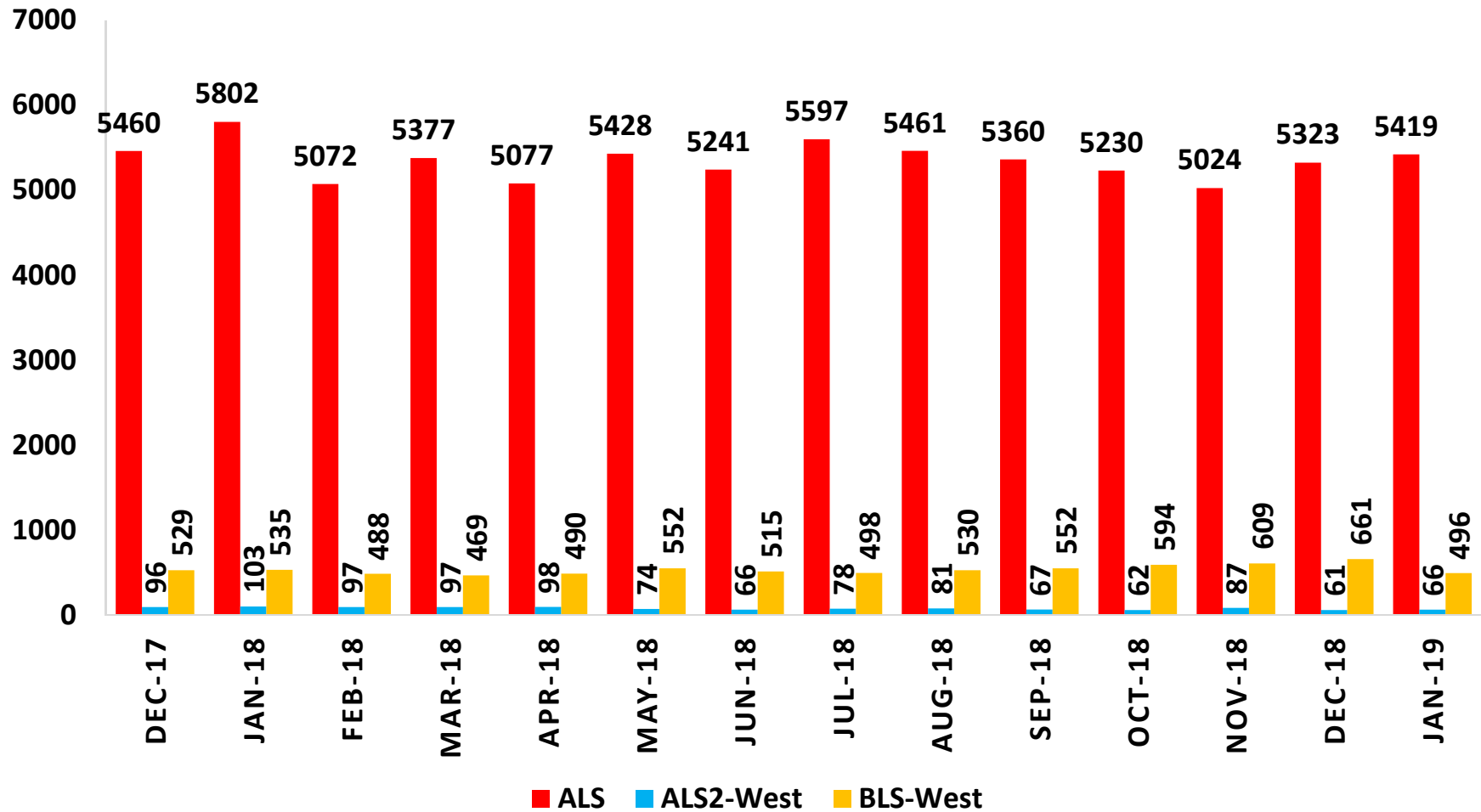
“To serve our communities’ pre-hospital needs through value-driven, compassionate, and clinically superior care.”

EMSA WESTERN DIVISION CALL VOLUME



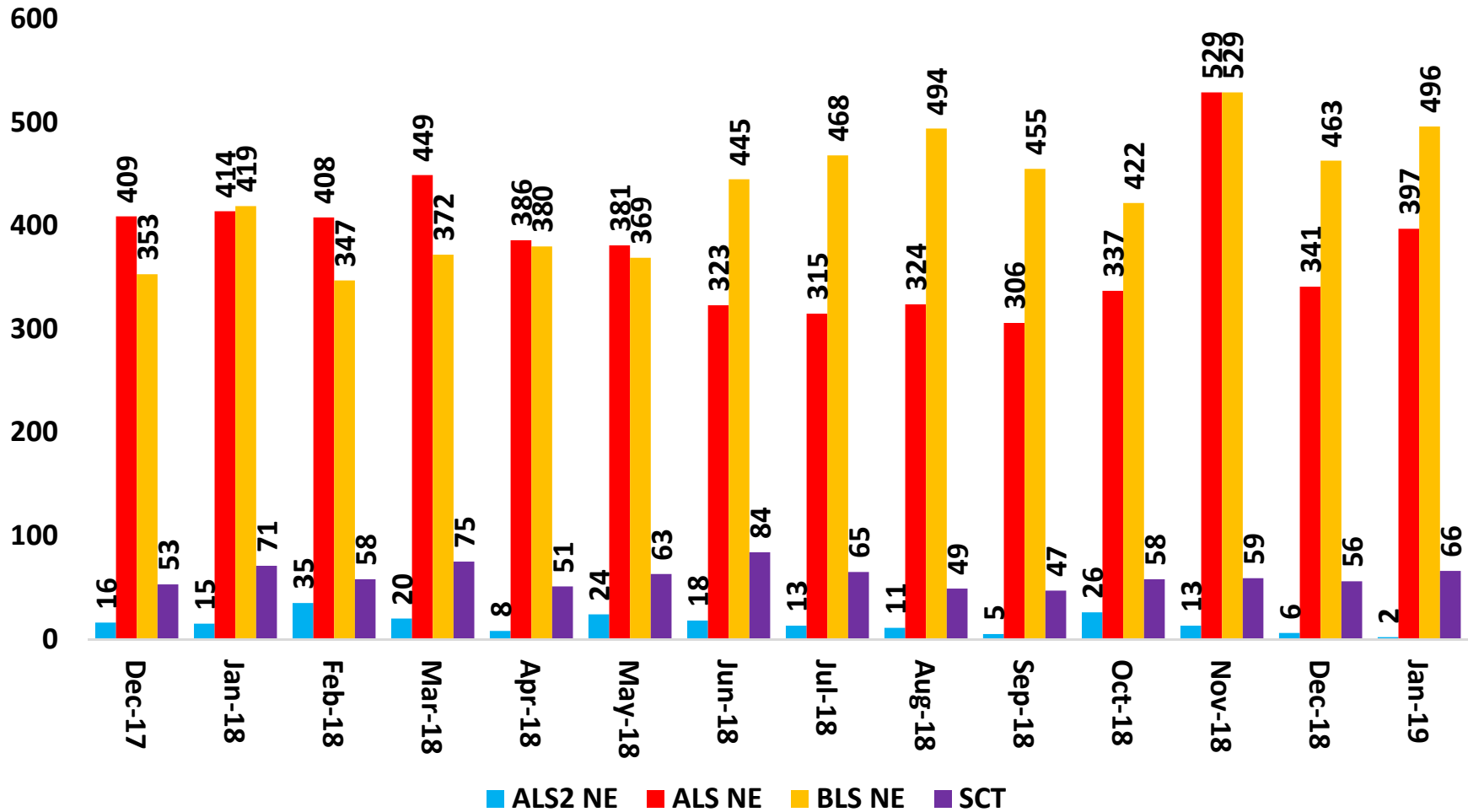
“To serve our communities’ pre-hospital needs through value-driven, compassionate, and clinically superior care.”

EMSA WESTERN DIVISION EMERGENCY CALL



“To serve our communities’ pre-hospital needs through value-driven, compassionate, and clinically superior care.”

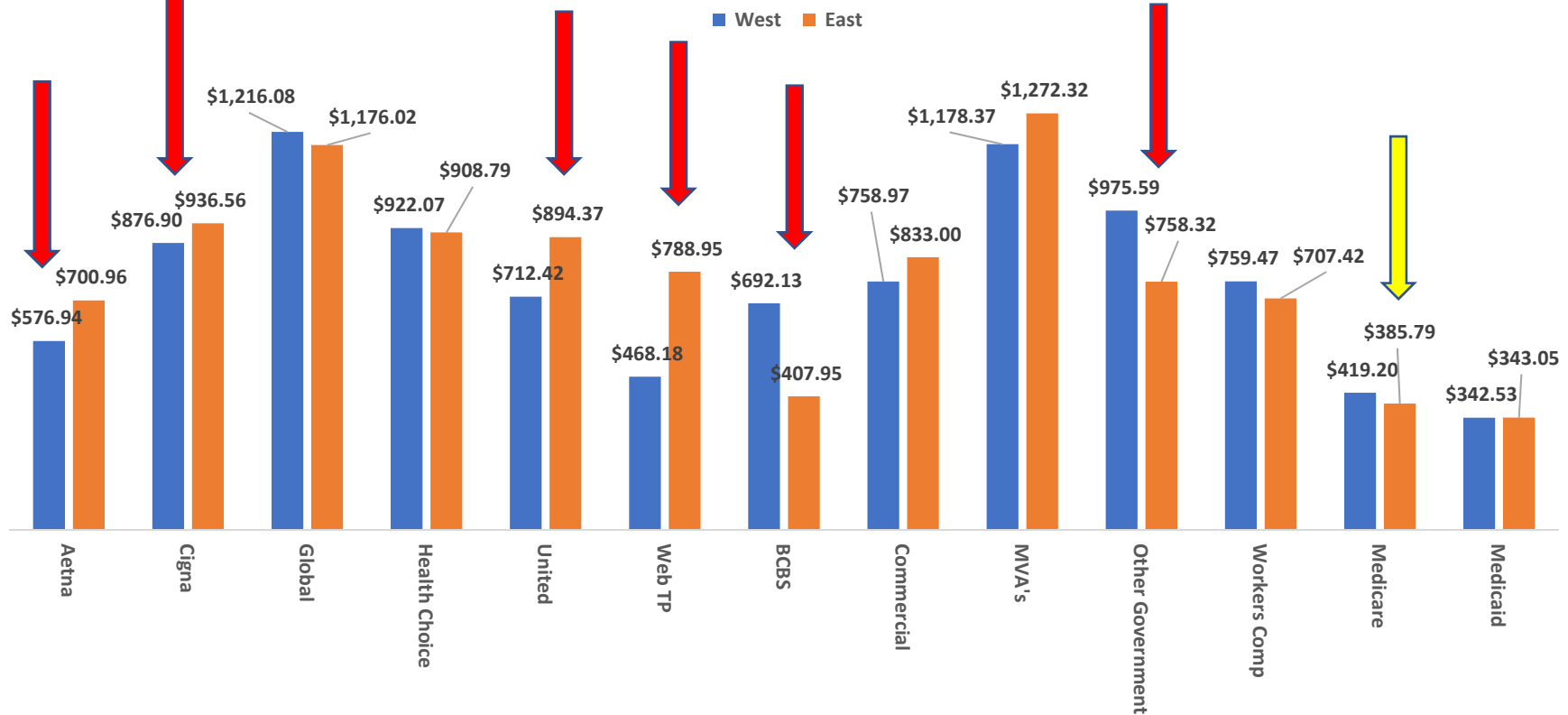
EMSA WESTERN DIVISION NON-EMERGENCY CALLS



“To serve our communities’ pre-hospital needs through value-driven, compassionate, and clinically superior care.”

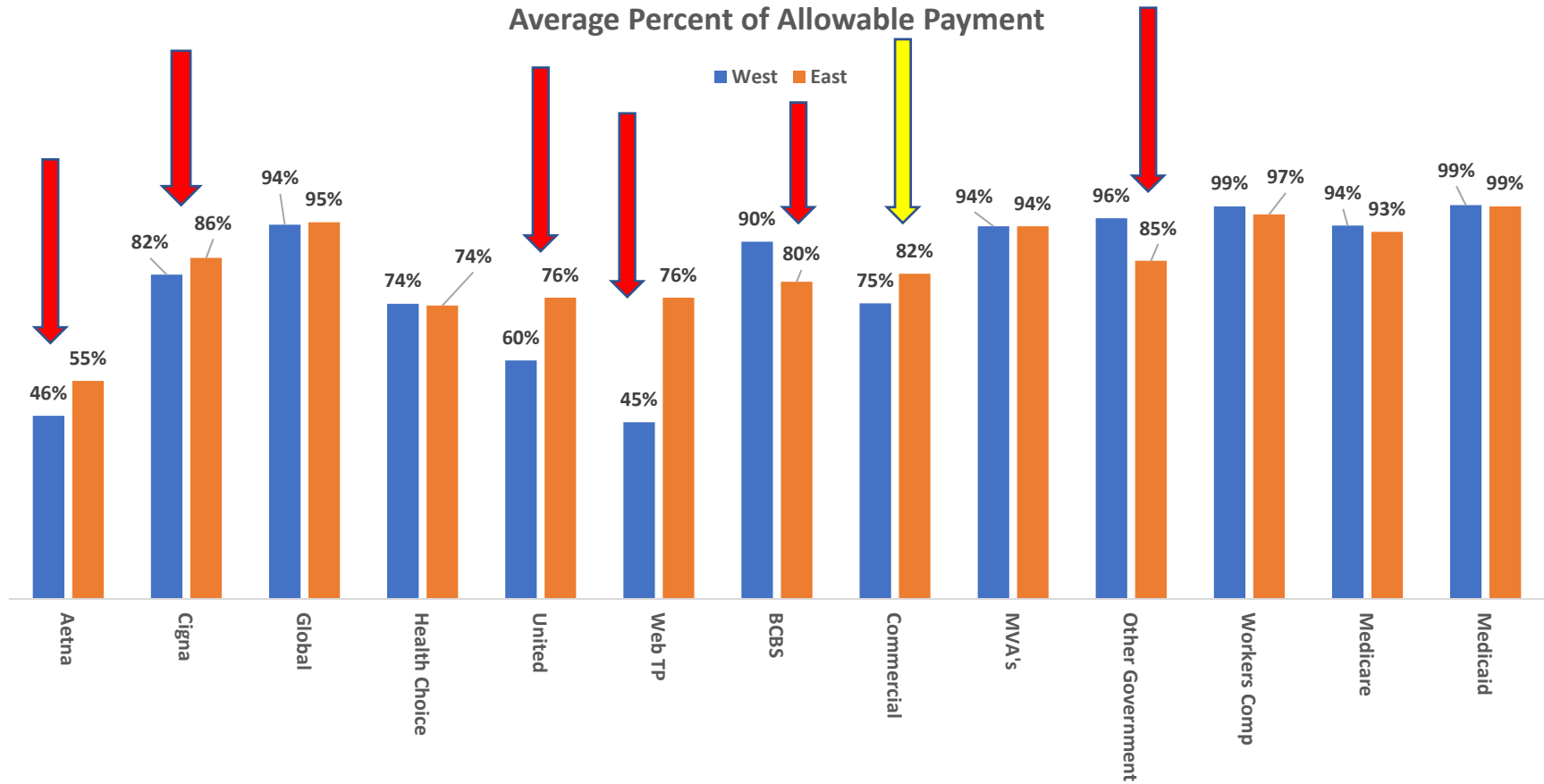
EMSA WESTERN DIVISION AVERAGE PAYMENT PER PAYOR

Average Dollar Paid Per Transport
(Does not include Secondary or Patient Payment)



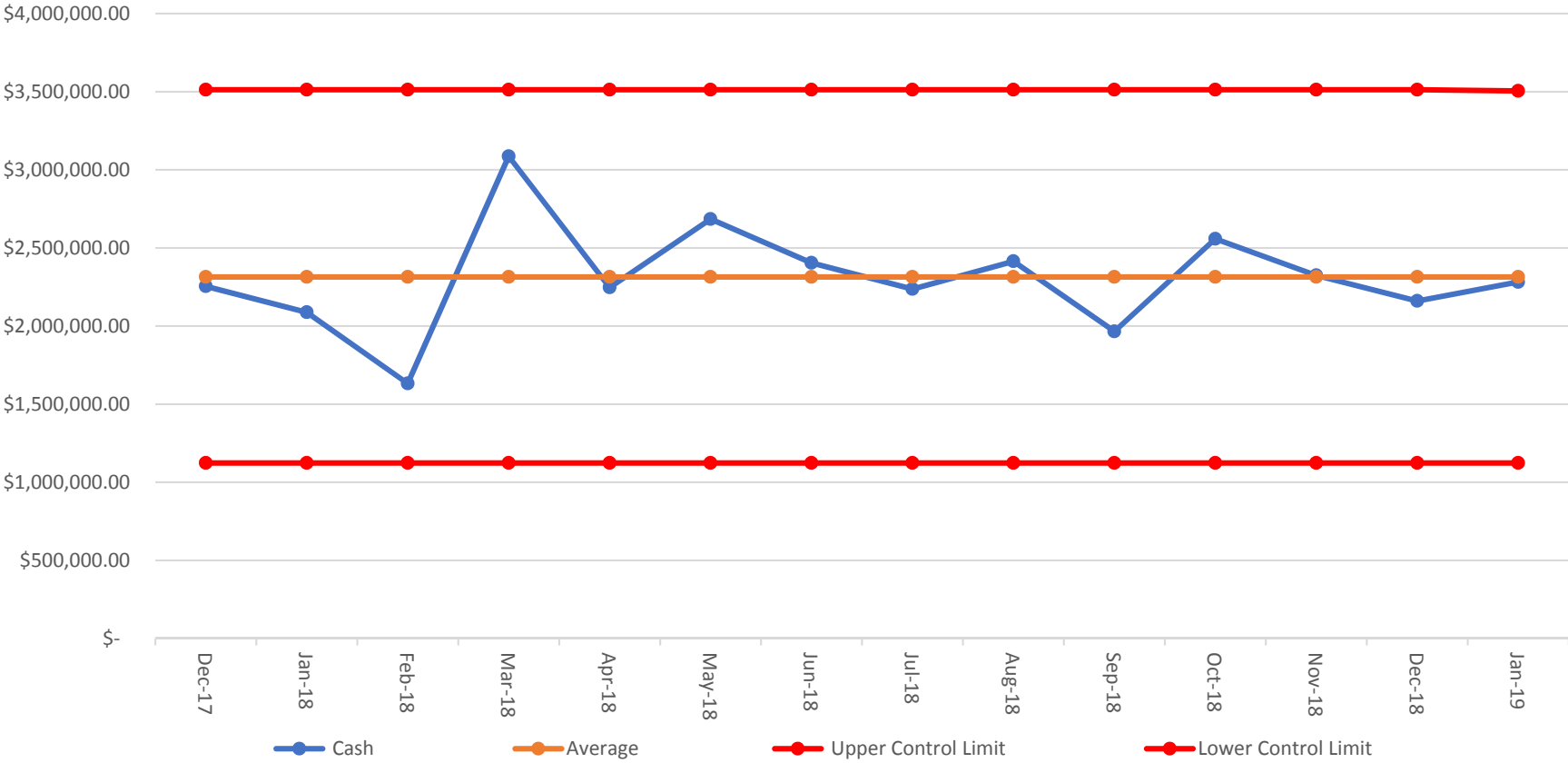
“To serve our communities’ pre-hospital needs through value-driven, compassionate, and clinically superior care.”

EMSA EASTERN DIVISION AVERAGE PAYMENT PER PAYOR



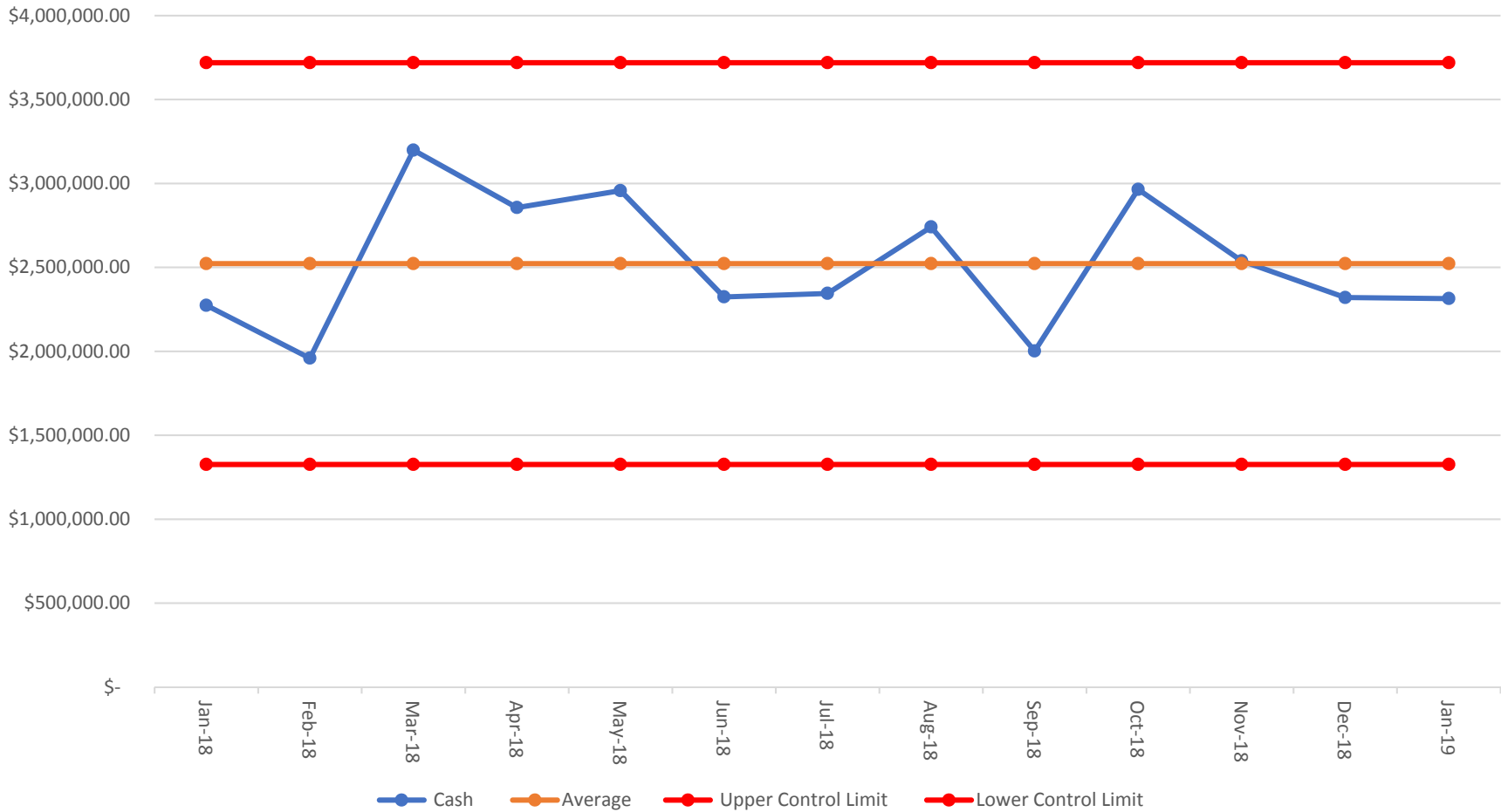
“To serve our communities’ pre-hospital needs through value-driven, compassionate, and clinically superior care.”

EMSA EASTERN DIVISION Total Cash Collections



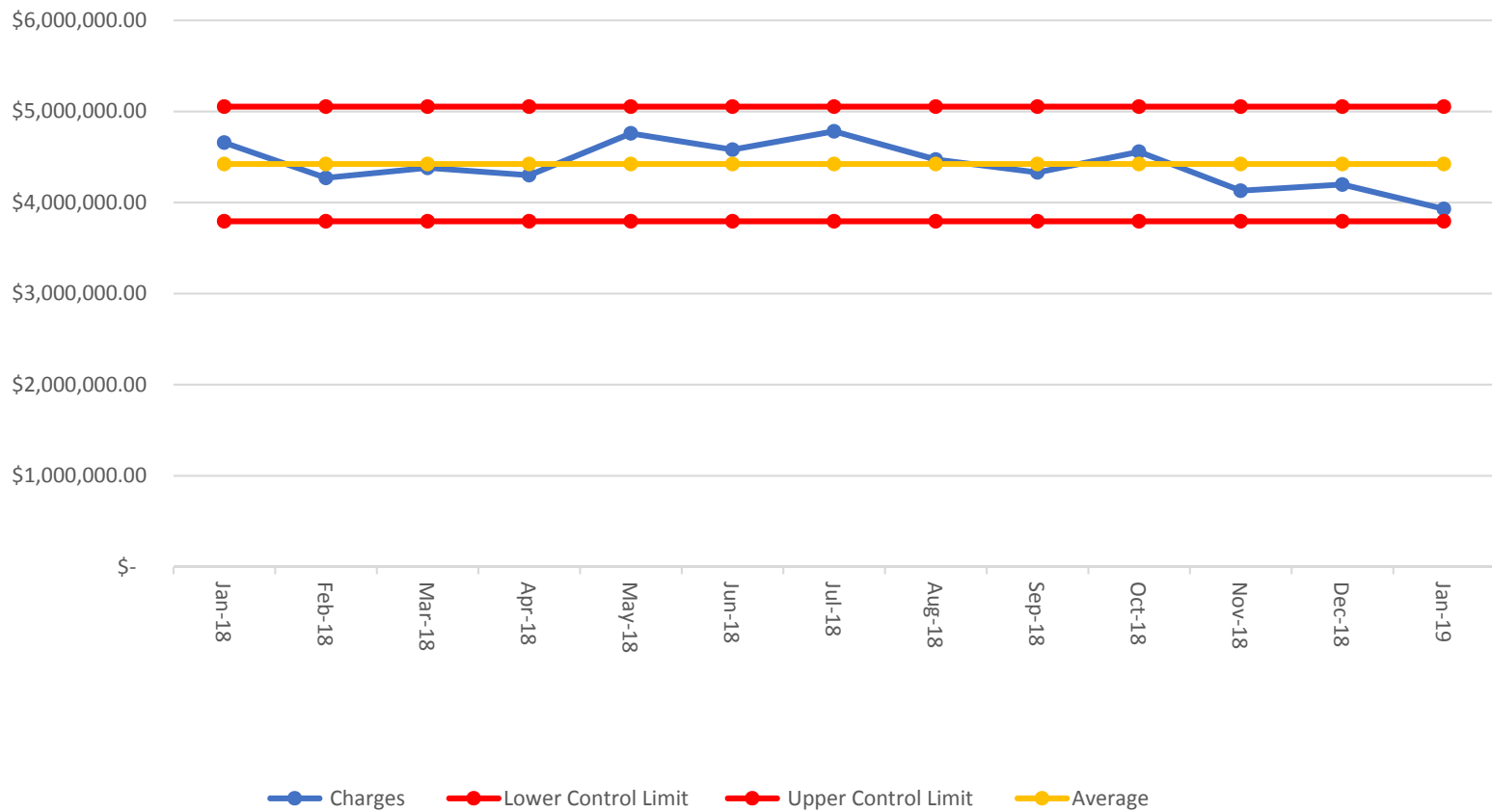
“To serve our communities’ pre-hospital needs through value-driven, compassionate, and clinically superior care.”

EMSA WESTERN DIVISION Total Cash Collections



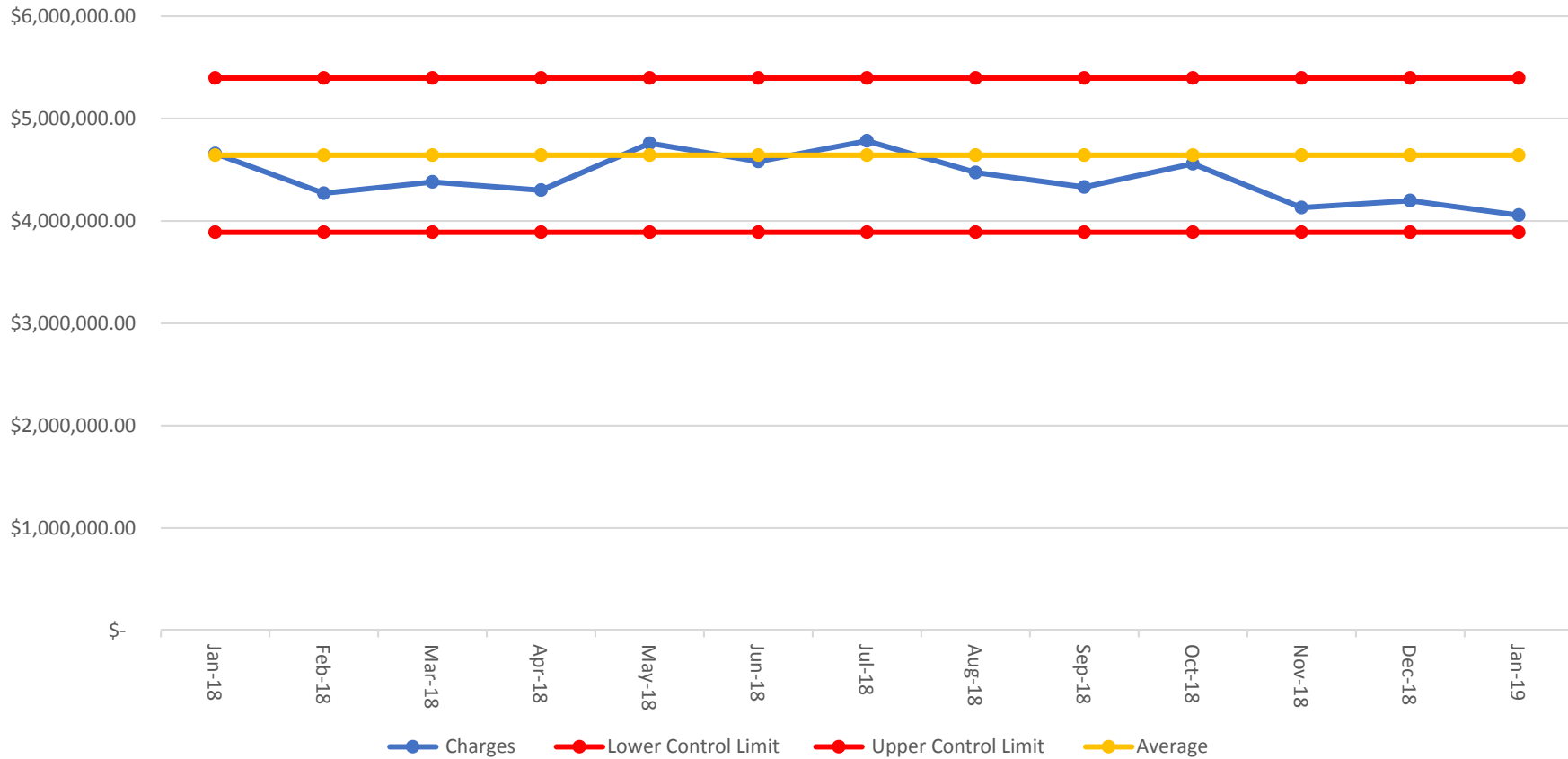
“To serve our communities’ pre-hospital needs through value-driven, compassionate, and clinically superior care.”

EMSA EASTERN DIVISION Total Charges



“To serve our communities’ pre-hospital needs through value-driven, compassionate, and clinically superior care.”

EMSA WESTERN DIVISION Total Charges



“To serve our communities’ pre-hospital needs through value-driven, compassionate, and clinically superior care.”