

Operational Compliance Report

August 2022

Frank Gresh

Interim Chief Operating Officer



“To serve our communities’ pre-hospital needs through value-driven, compassionate, and clinically superior care.”

August 2022 Compliance Summary – Combined

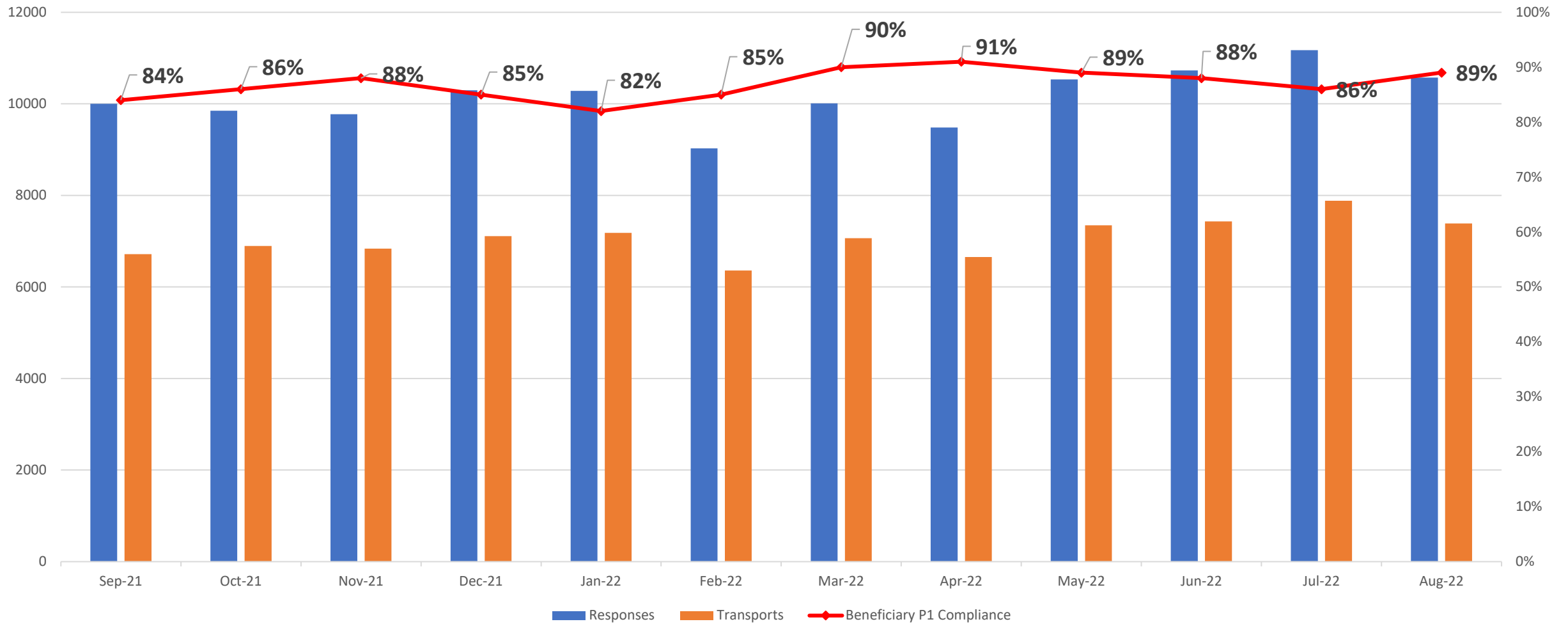
	Priority 1	Priority 2	Priority 3	Priority 4
East Ben. Total	89%	95%	83%	93%
East NB Total	Priority 1&2	76%	100%	100%
West Ben. Total	54%	74%	84%	40%
West NB Total	Priority 1&2	75%	N/A	N/A



“To serve our communities’ pre-hospital needs through value-driven, compassionate, and clinically superior care.”

P1 Compliance Trends – EASTERN DIVISION

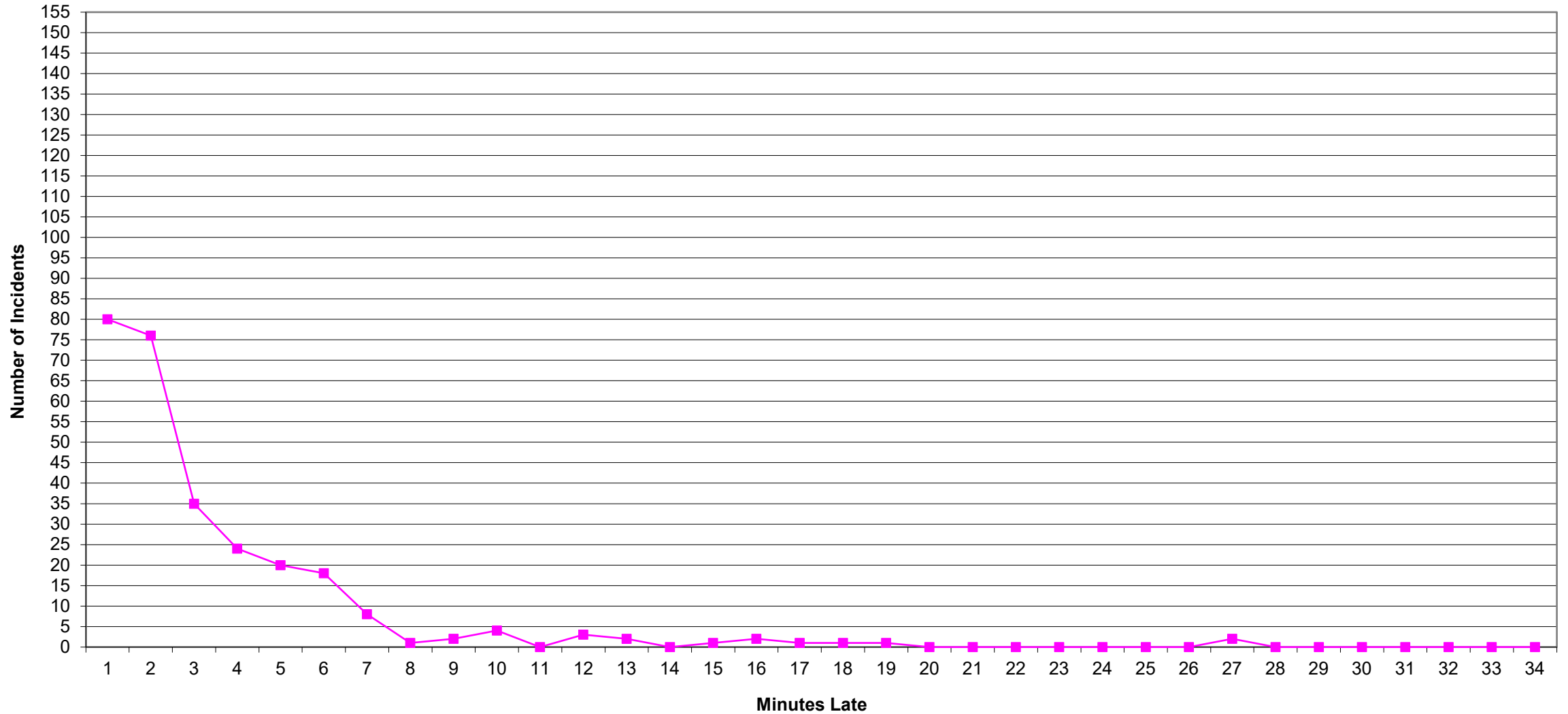
East Beneficiary Response Time Compliance with Response and Transport Totals



■ Responses ■ Transports ◆ Beneficiary P1 Compliance



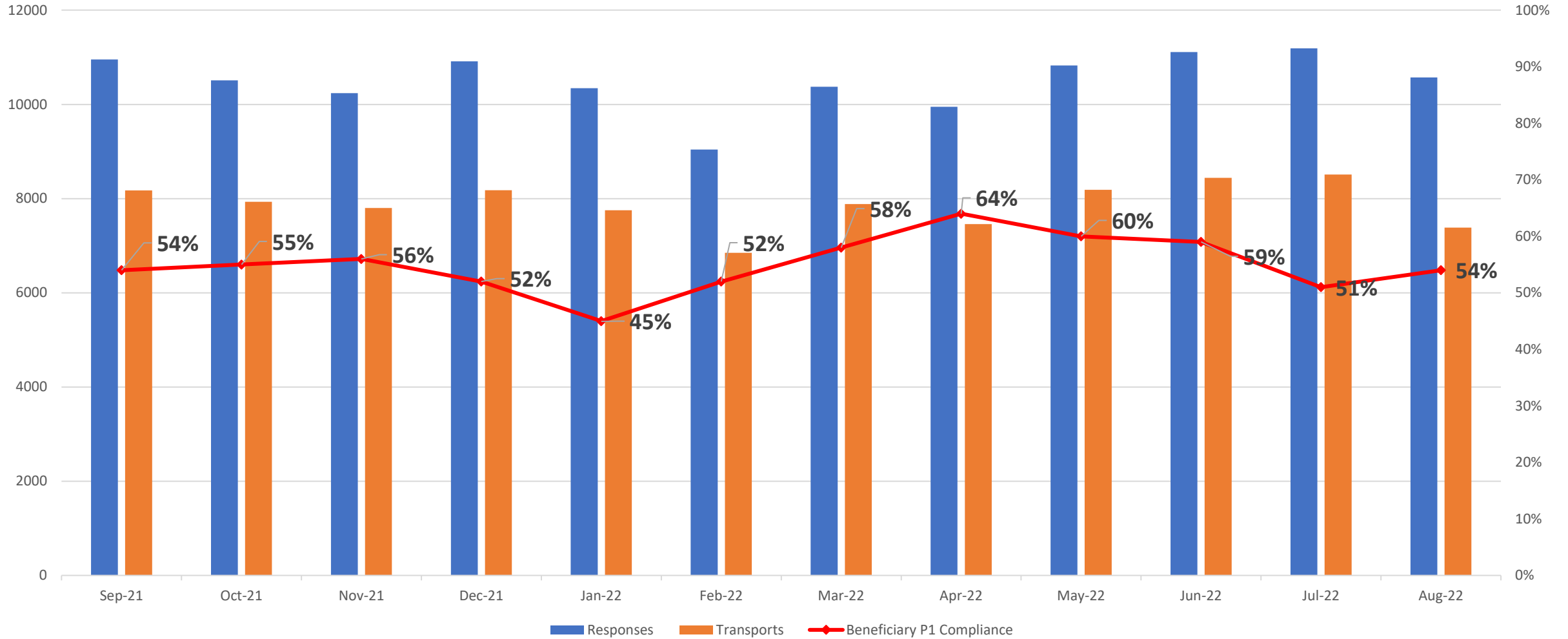
Eastern Division Priority 1 Late Calls August 2022



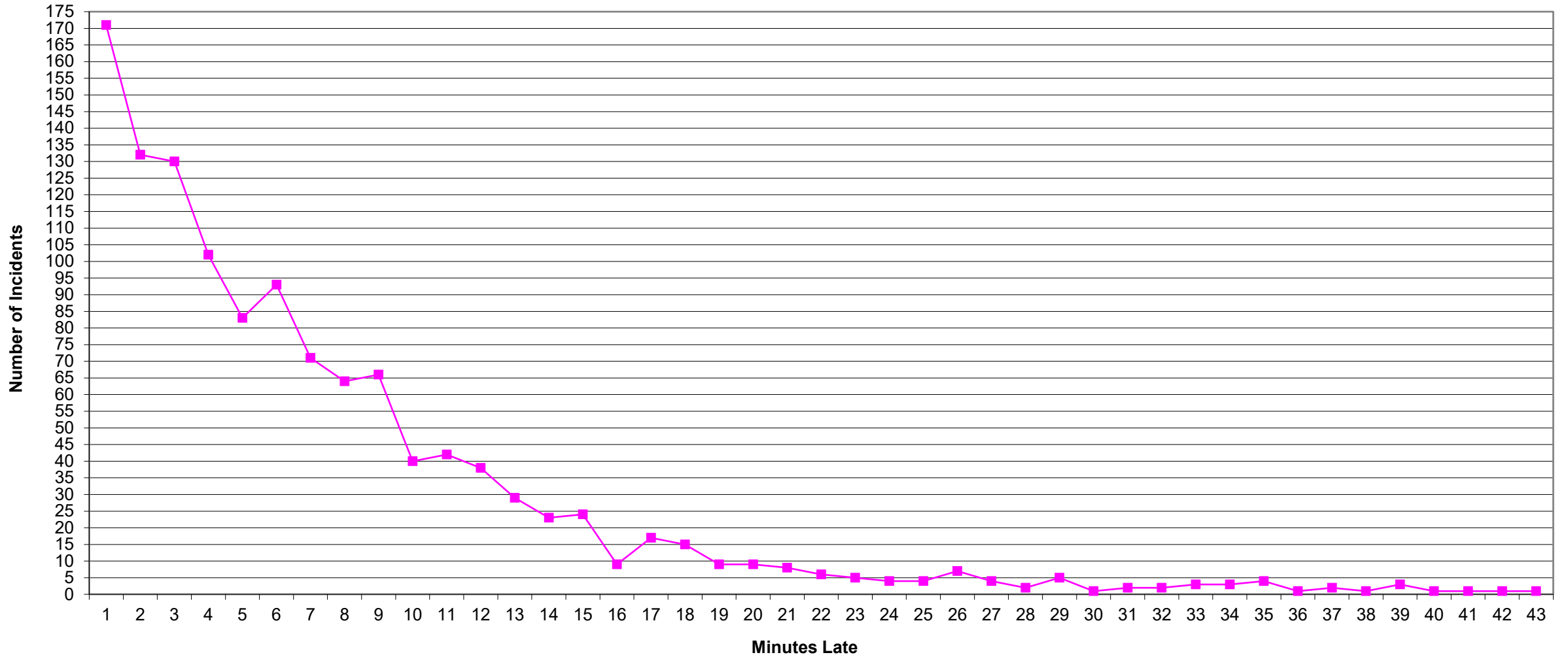
“To serve our communities’ pre-hospital needs through value-driven, compassionate, and clinically superior care.”

P1 Compliance Trends – WESTERN DIVISION

West Beneficiary Response Time Compliance with Response and Transport Totals

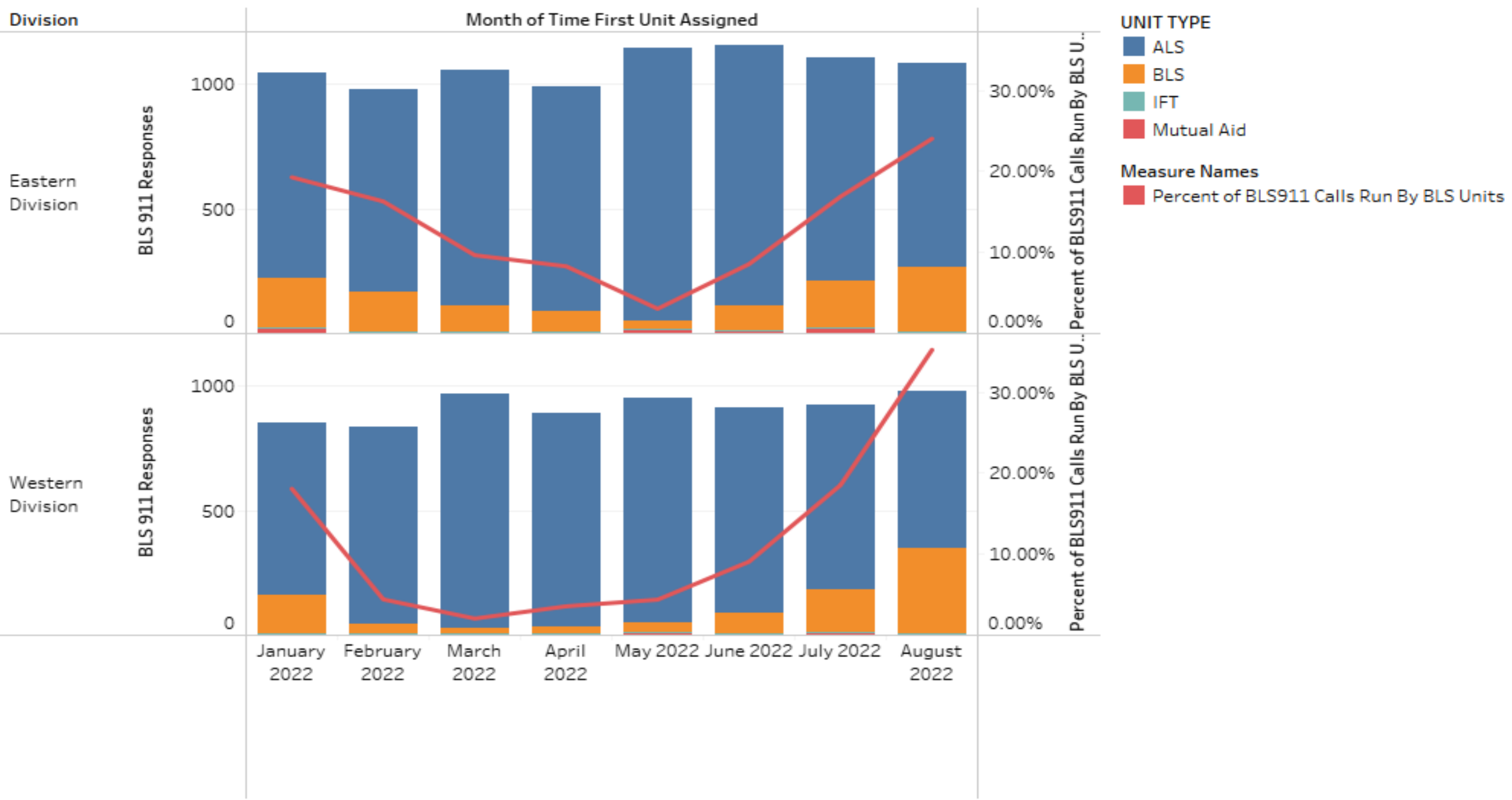


Western Division Priority 1 Late Calls August 2022



“To serve our communities’ pre-hospital needs through value-driven, compassionate, and clinically superior care.”

BLS911 Utilization

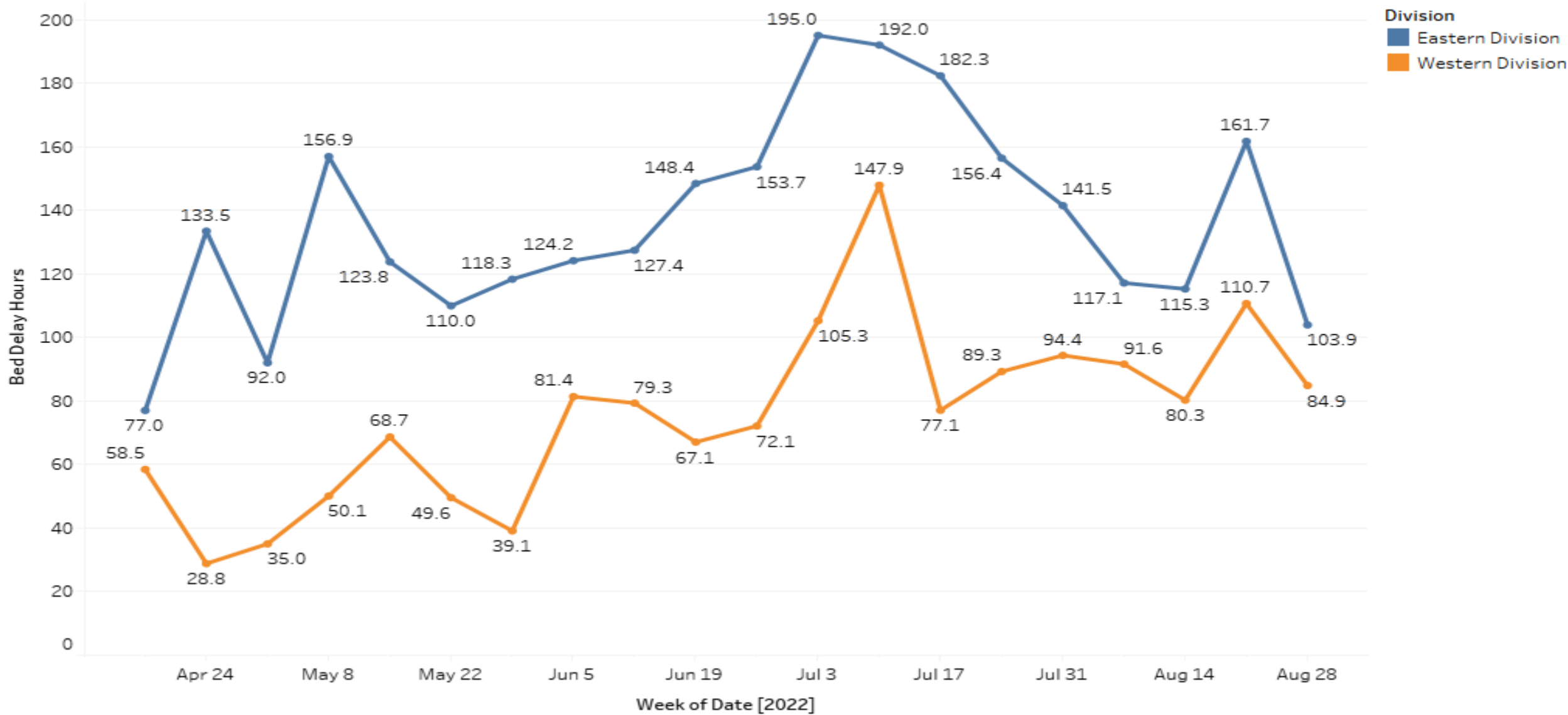


BLS IFT Unit Utilization



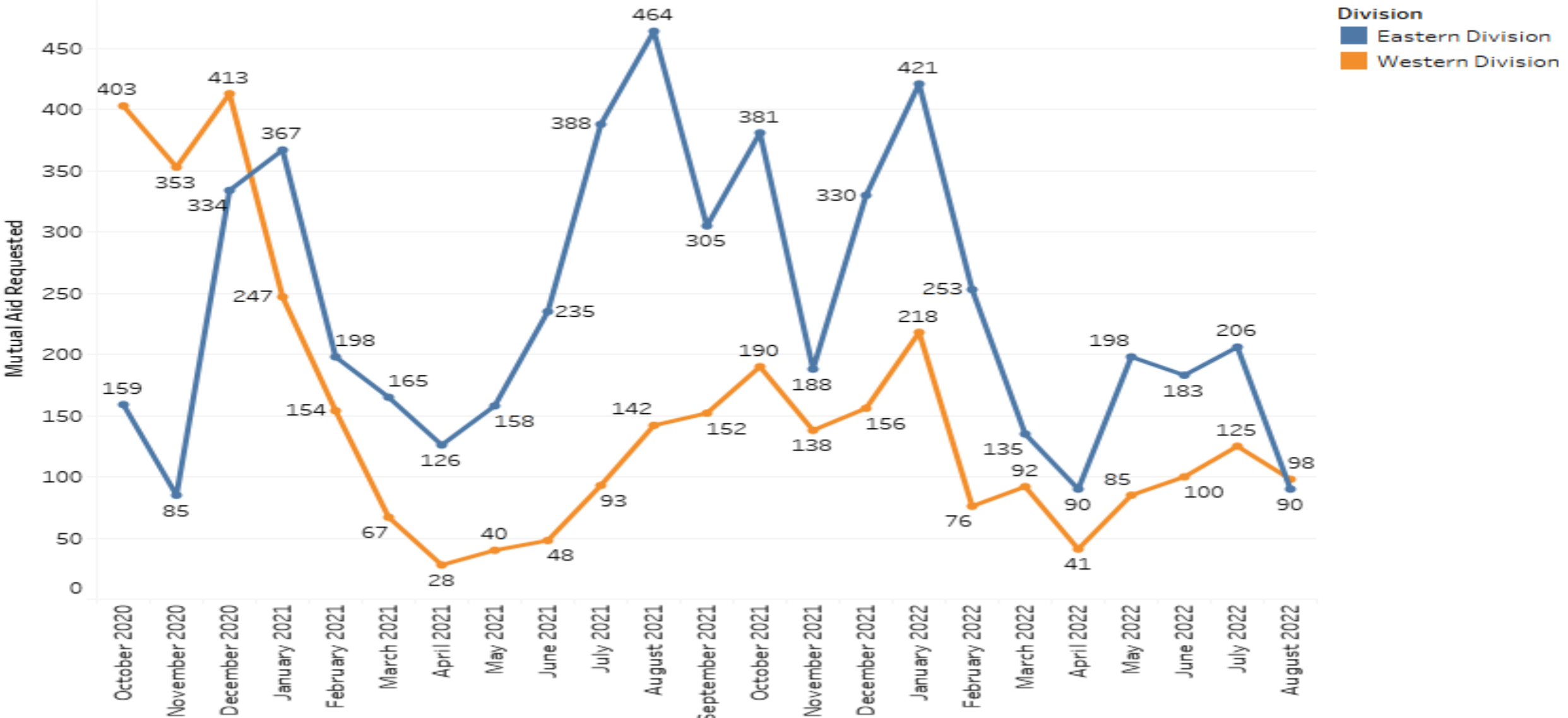
BED DELAY – BOTH DIVISIONS

Bed delays over time



Mutual Aid Utilization – Both Divisions

Mutual Aid Requested Trend



Year over Year by week

Division

Time First Unit Assigned

Year of Time First Unit Assigned

Eastern Division

Transports ★

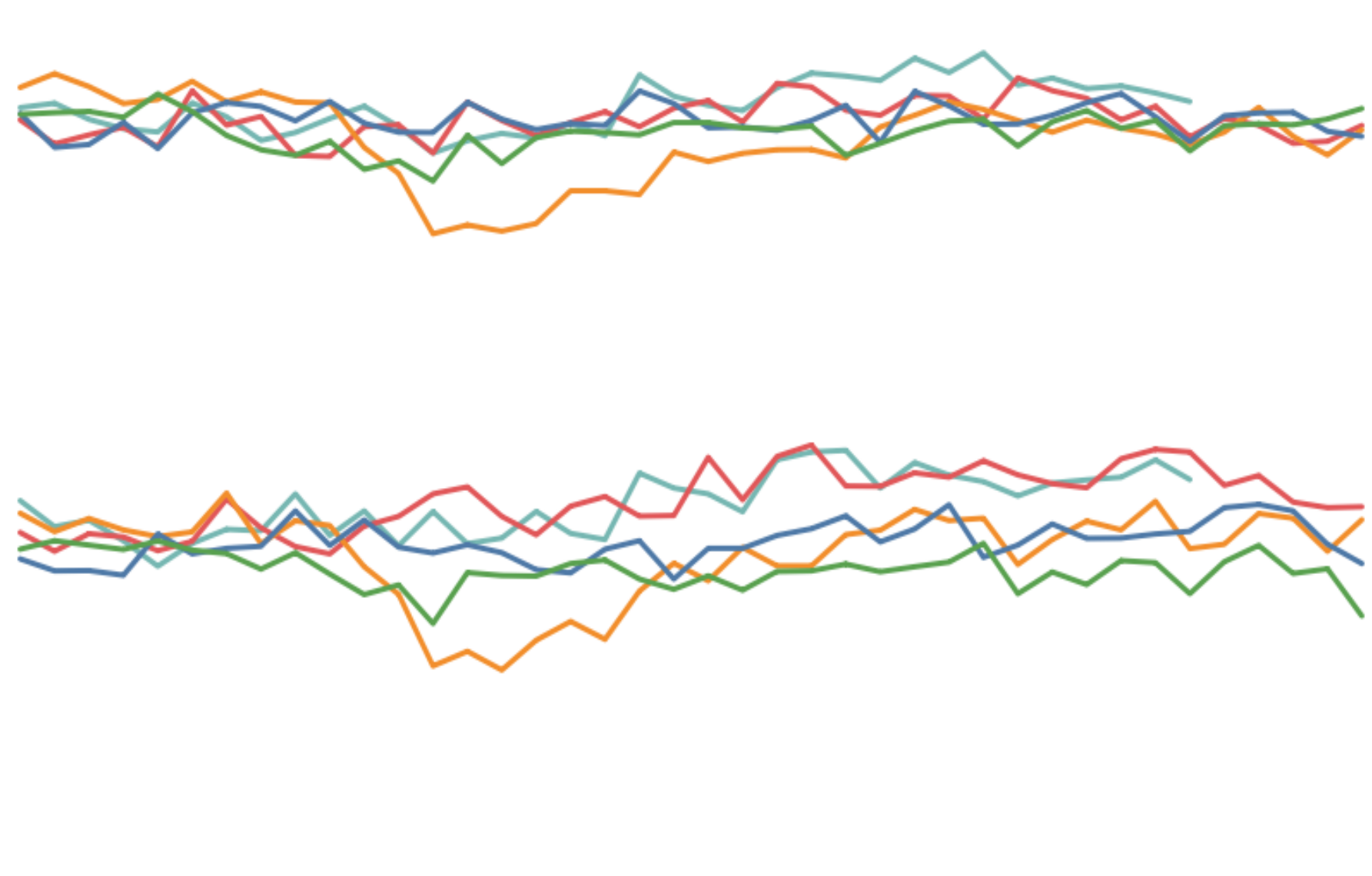
- 2018
- 2019
- 2020
- 2021
- 2022

Western Division

Transports ★

Week 2 Week 3 Week 4 Week 5 Week 6 Week 7 Week 8 Week 9 Week 10 Week 11 Week 12 Week 13 Week 14 Week 15 Week 16 Week 17 Week 18 Week 19 Week 20 Week 21 Week 22 Week 23 Week 24 Week 25 Week 26 Week 27 Week 28 Week 29 Week 30 Week 31 Week 32 Week 33 Week 34 Week 35 Week 36 Week 37 Week 38 Week 39 Week 40 Week 41

2000
1500
1000
500
2000
1500
1000
500



Headcount – EMSA Operations (as of 9/14)

EASTERN DIVISION	FTE Goal	FTE Actual	PTE Actual (.5)	Total Headcount	% Staffed	Productive Headcount	% Productive
EMT	105	94	10	99	90%	98	93%
Paramedic	75	79	6	81	105	83	111%
SSC	23	14	0	14	61%	14	61%

WESTERN DIVISION	FTE Goal	FTE Actual	PTE Actual (.5)	Total Headcount	% Staffed	Productive Headcount	% Productive
EMT	118	104	13	110.5	88%	108.5	92%
Paramedics	80	57	13	63.5	71%	63	78%
SSC	23	16	1	16.5	70%	16.5	70%

% Productive impacted by TMs being moved out of a productive role due to LOA, FMLA, OJI, secondary assignment or, training

