

Operational Compliance Report

December 2021

Frank Gresh

Interim Chief Operating Officer



“To serve our communities’ pre-hospital needs through value-driven, compassionate, and clinically superior care.”

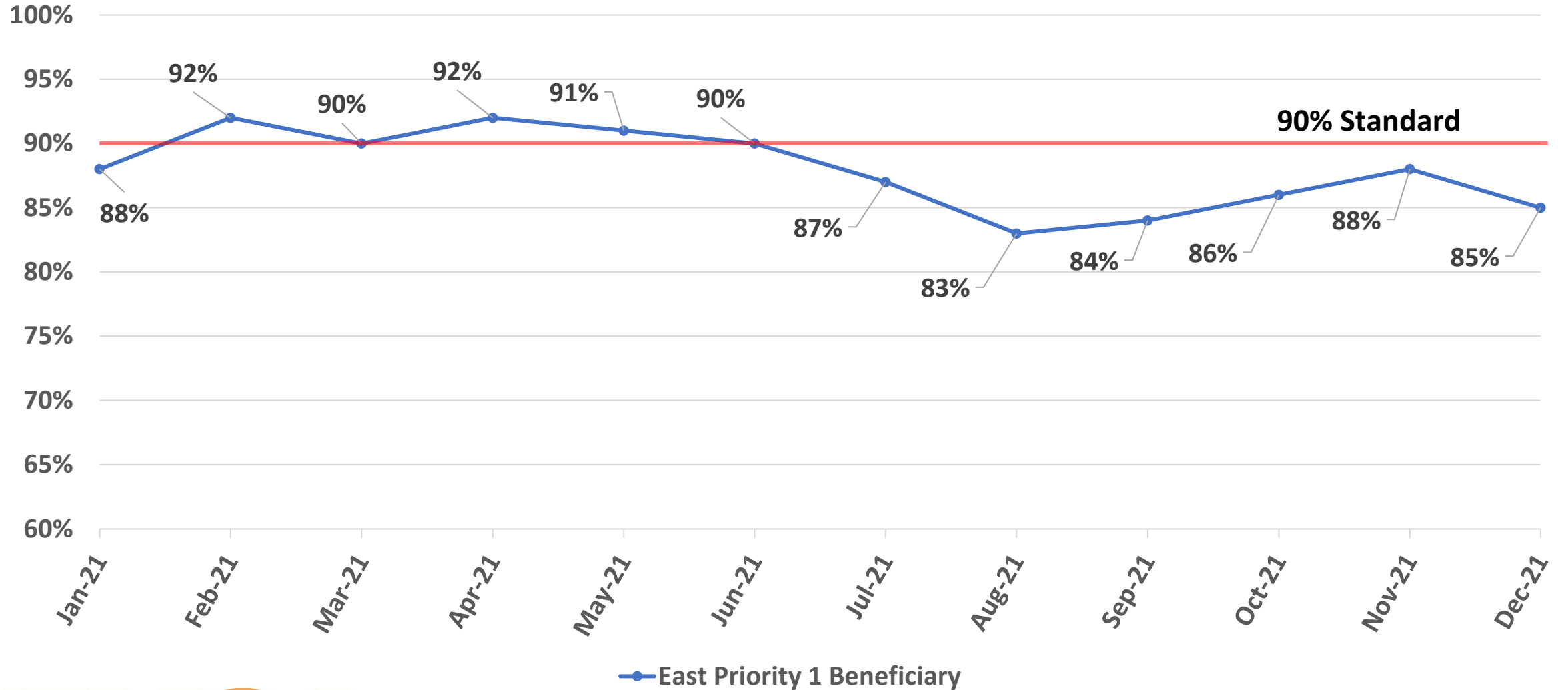
December 2021 Compliance Summary – Combined

	Priority 1	Priority 2	Priority 3	Priority 4
East Ben. Total	85%	89%	63%	75%
East NB Total	Priority 1&2	73%	66%	50%
West Ben. Total	52%	73%	49%	45%
West NB Total	Priority 1&2	45%	50%	N/A



“To serve our communities’ pre-hospital needs through value-driven, compassionate, and clinically superior care.”

East Beneficiary Response Time Compliance

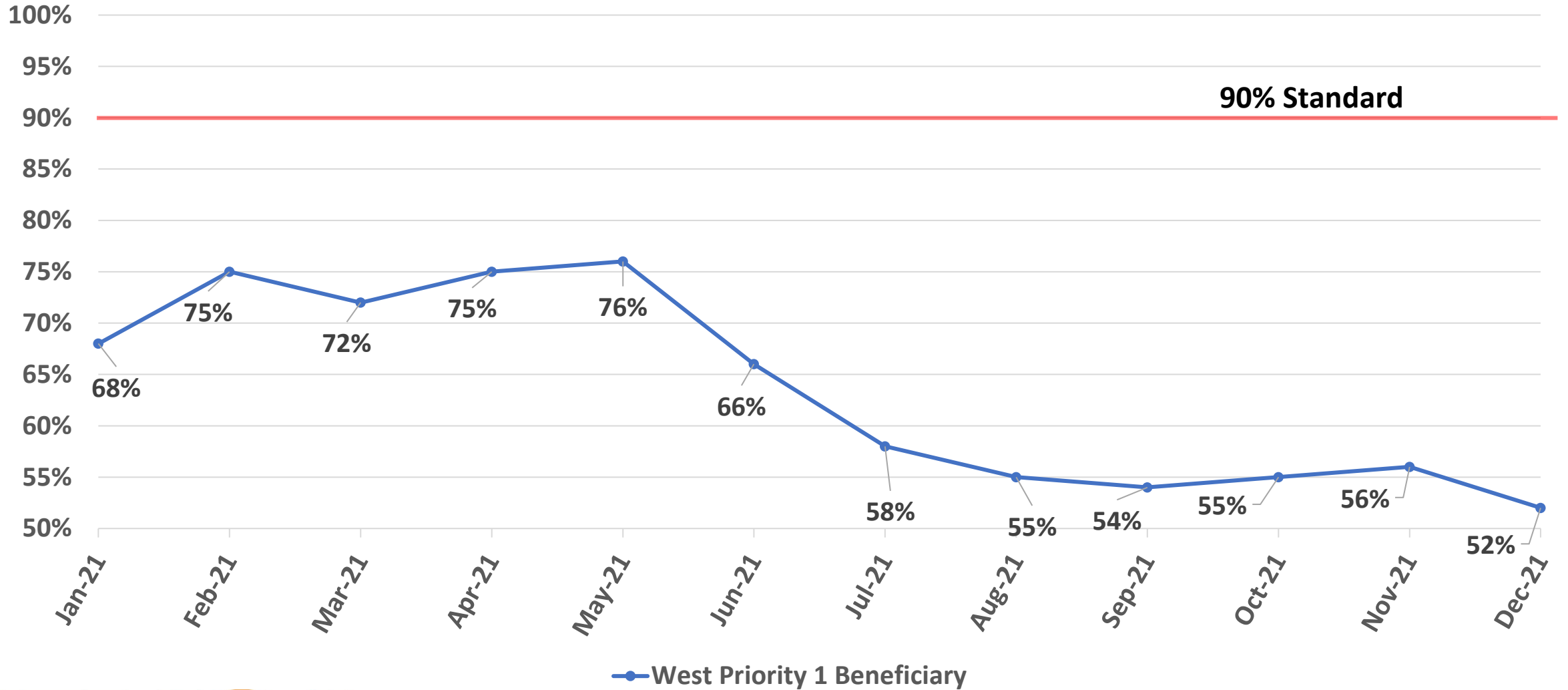


— East Priority 1 Beneficiary



“To serve our communities’ pre-hospital needs through value-driven, compassionate, and clinically superior care.”

West Beneficiary Response Time Compliance



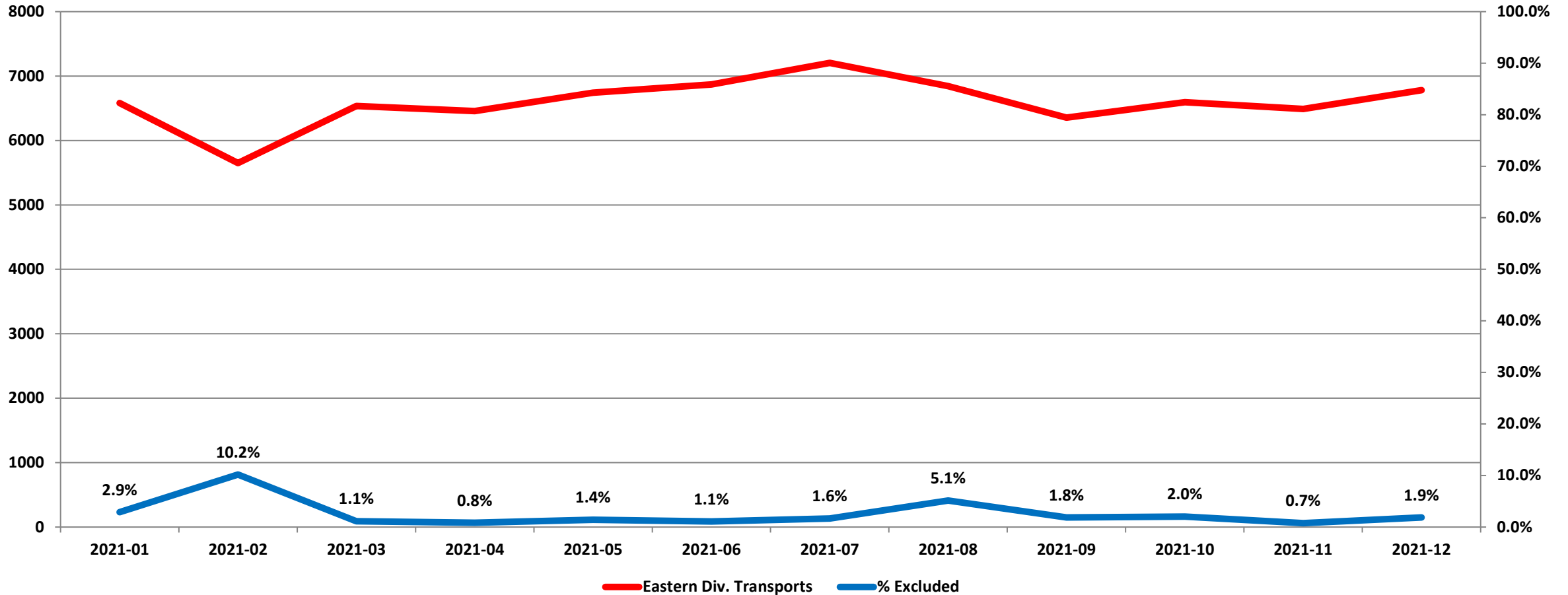
— West Priority 1 Beneficiary



“To serve our communities’ pre-hospital needs through value-driven, compassionate, and clinically superior care.”

Exclusions

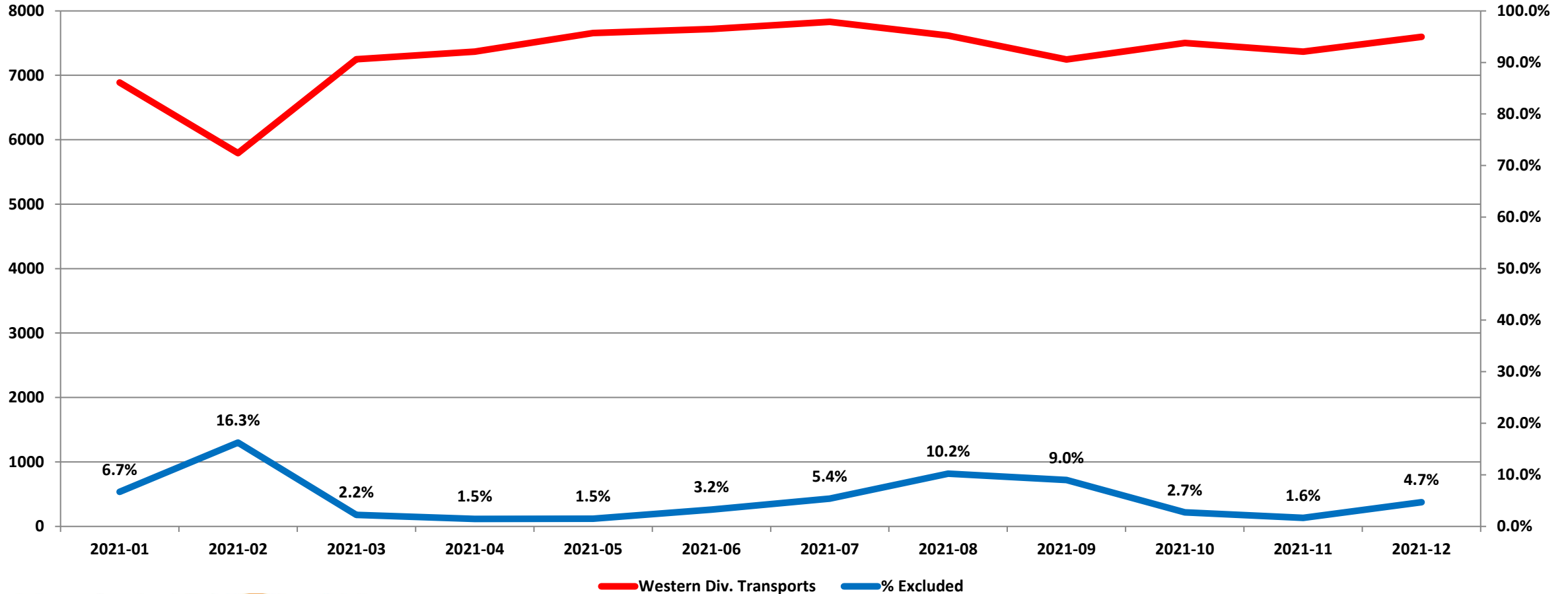
Eastern Division Response Time Exclusions Twelve Months ending December, 2021



“To serve our communities’ pre-hospital needs through value-driven, compassionate, and clinically superior care.”

Exclusions

Western Division Response Time Exclusions Twelve Months ending December, 2021



Western Div. Transports % Excluded



“To serve our communities’ pre-hospital needs through value-driven, compassionate, and clinically superior care.”