

Compliance Summary

From December 01, 2021 to December 31, 2021

Eastern Division

Overall Compliance

	Priority 1			Priority 2			Priority 3			Priority 4		
	Inc.	Late	%	Inc.	Late	%	Inc.	Late	%	Inc.	Late	%
Tulsa 1	607	94	84%	1,104	87	92%	532	189	64%	5	0	100%
Tulsa 2	510	81	84%	910	108	88%	16	1	93%	0	0	N/A
Tulsa 3	763	98	87%	1,379	165	88%	500	194	61%	11	4	63%
Tulsa Total	1,880	273	85%	3,393	360	89%	1,048	384	63%	16	4	75%
Sand Springs	66	22		133	24	76%	1	1	0%	2	1	50%
Jenks	37	16		68	11	74%	1	0	100%	0	0	N/A
Bixby	48	24		86	21	66%	1	0	100%	0	0	N/A
Total Non-Beneficiary	151	62		287	56	73%	3	1	66%	2	1	50%

Average Response Time Priority 1 & 2

Received to On Scene: 12:18

Dispatched to On Scene: 10:26

The beneficiary city of Tulsa must be above 90% each month. In the suburbs of Sand Springs, Jenks and Bixby, the total of Priority 1 and Priority 2 incidents are combined to get the compliance percentile each month. Each suburban city must be above 75% each month, and combined they must be over 90 %. Percentage figures above are rounded down as per the RFP.

Compliance Summary

From December 01, 2021 to December 31, 2021

Western Division Overall Compliance

	Priority 1			Priority 2			Priority 3			Priority 4		
	Inc.	Late	%	Inc.	Late	%	Inc.	Late	%	Inc.	Late	%
Oklahoma City 1	1,061	412	61%	1,764	397	77%	636	330	48%	11	6	45%
Oklahoma City 2	1,217	636	47%	1,731	508	70%	328	142	56%	0	0	N/A
Edmond	238	140	41%	296	93	68%	94	63	32%	0	0	N/A
Total OKC & Edmond	2,516	1,188	52%	3,791	998	73%	1,058	535	49%	11	6	45%
Mustang	45	38		60	37	28%	3	2	33%	0	0	N/A
The Village	34	18		67	22	60%	1	0	100%	0	0	N/A
Nichols Hills	5	2		7	1	75%	0	0	N/A	0	0	N/A
Total Non-Beneficiary	84	58		134	60	45%	4	2	50%	0	0	N/A

Average Response Time Priority 1 & 2

Received to On Scene: 18:28

Dispatched to On Scene: 13:23

The beneficiary city of Oklahoma City must be above 90% each month. In the suburbs of Mustang, The Village, and Nichols Hills, the total of Priority 1 and Priority 2 incidents are combined to get the compliance percentile each month. Each suburban city must be above 75% each month, and combined they must be over 90%. Percentage figures above are rounded down as per the RFP.

Compliance Summary
December 1, 2021 to December 31, 2021

Eastern Division
Non-discrimination

Priority 1			
	Inc.	Late	%
District 1	607	94	84%
District 2	510	81	84%
District 3	763	98	87%

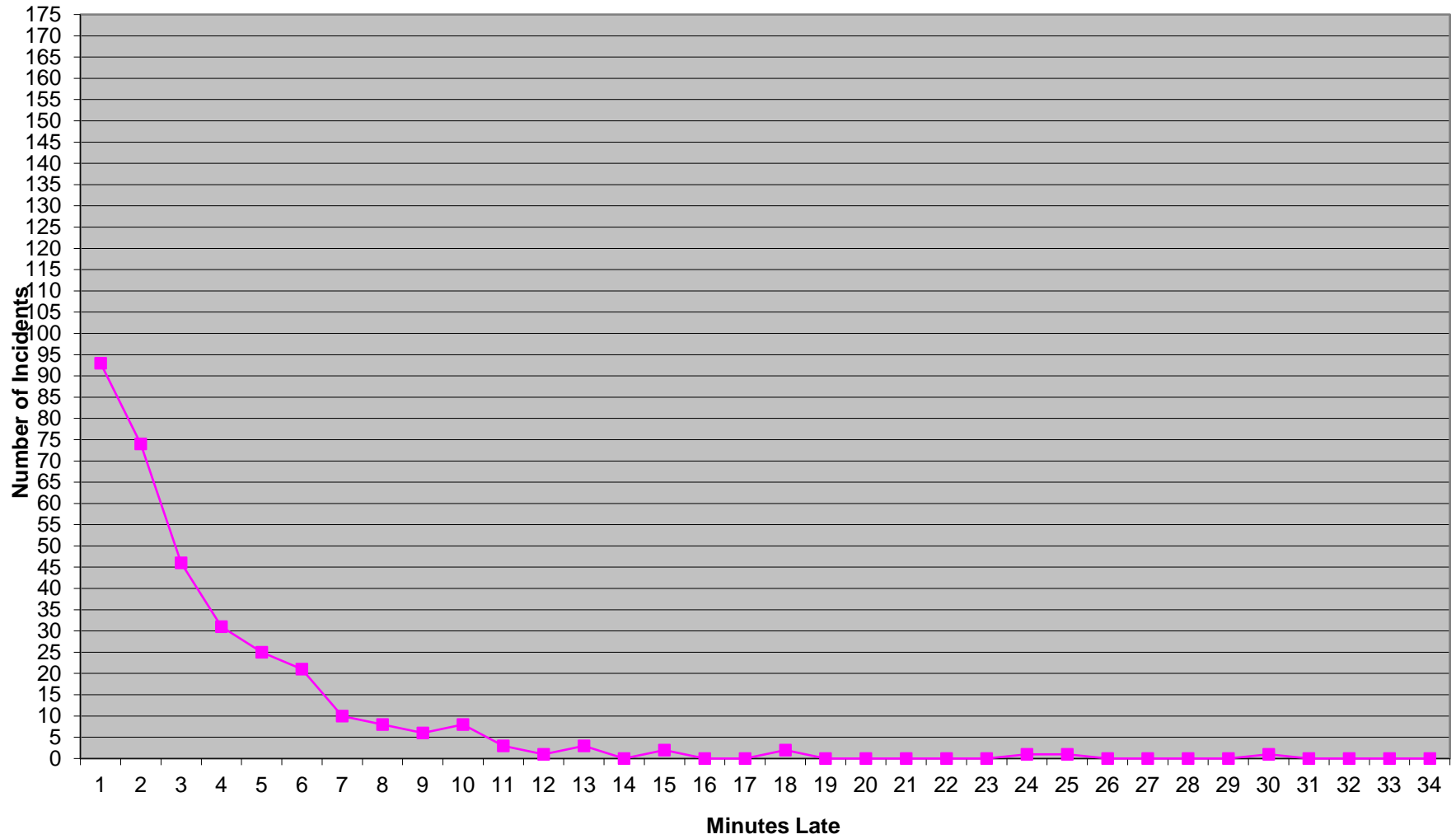
Each district within the Beneficiary City of Tulsa must be individually above 75% on Priority 1 transports (with a minimum of 100 incidents in each for measurement). Percentage figures above are rounded down as per the RFP.

Western Division
Non-discrimination

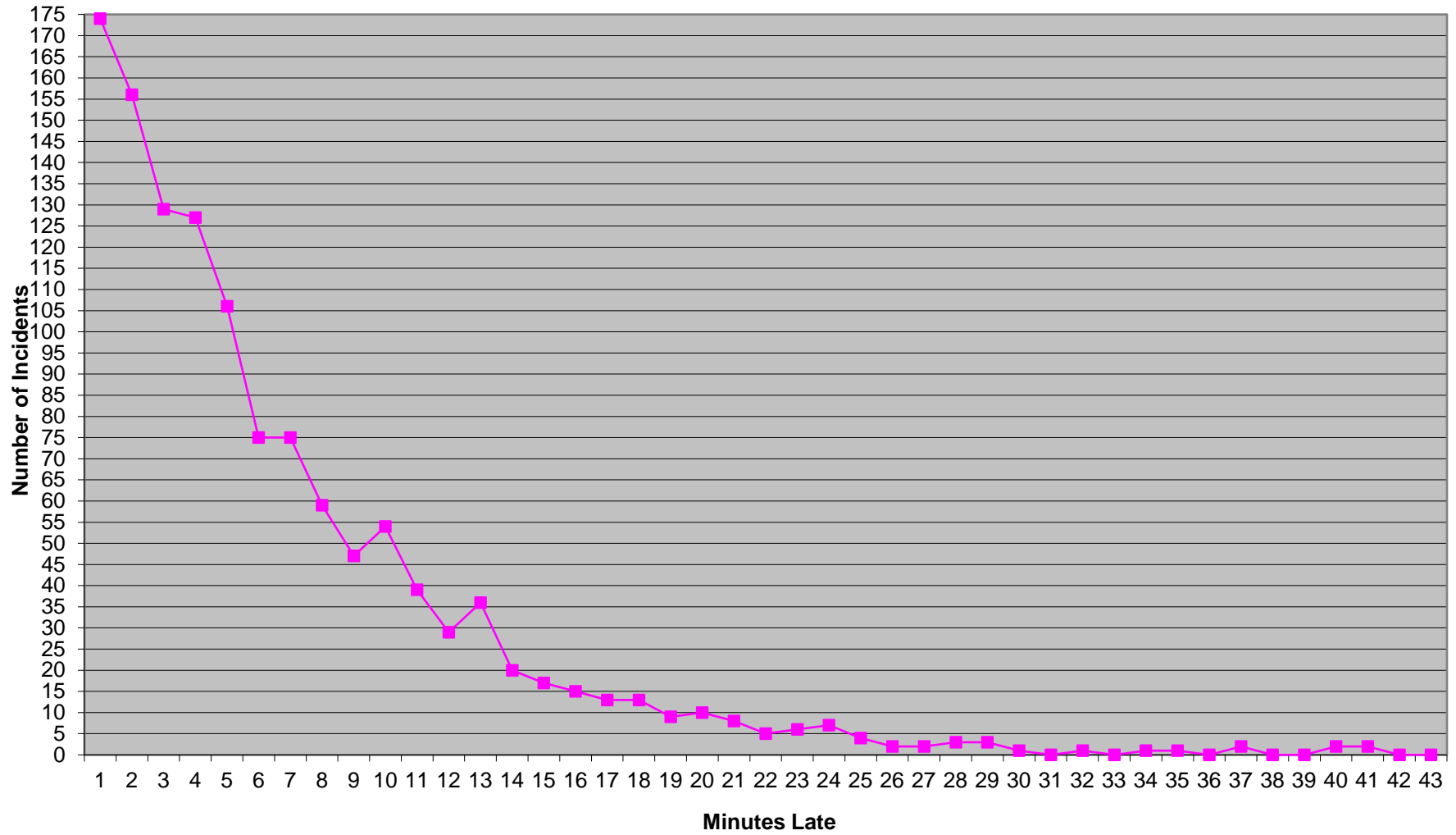
Priority 1			
	Inc.	Late	%
District 1	1061	412	61%
District 2	1217	636	47%
Edmond	238	140	41%

Each district of the Western Division must be individually above 75% on Priority 1 transports (with a minimum of 100 incidents in each for measurement). Percentage figures above are rounded down as per the RFP.

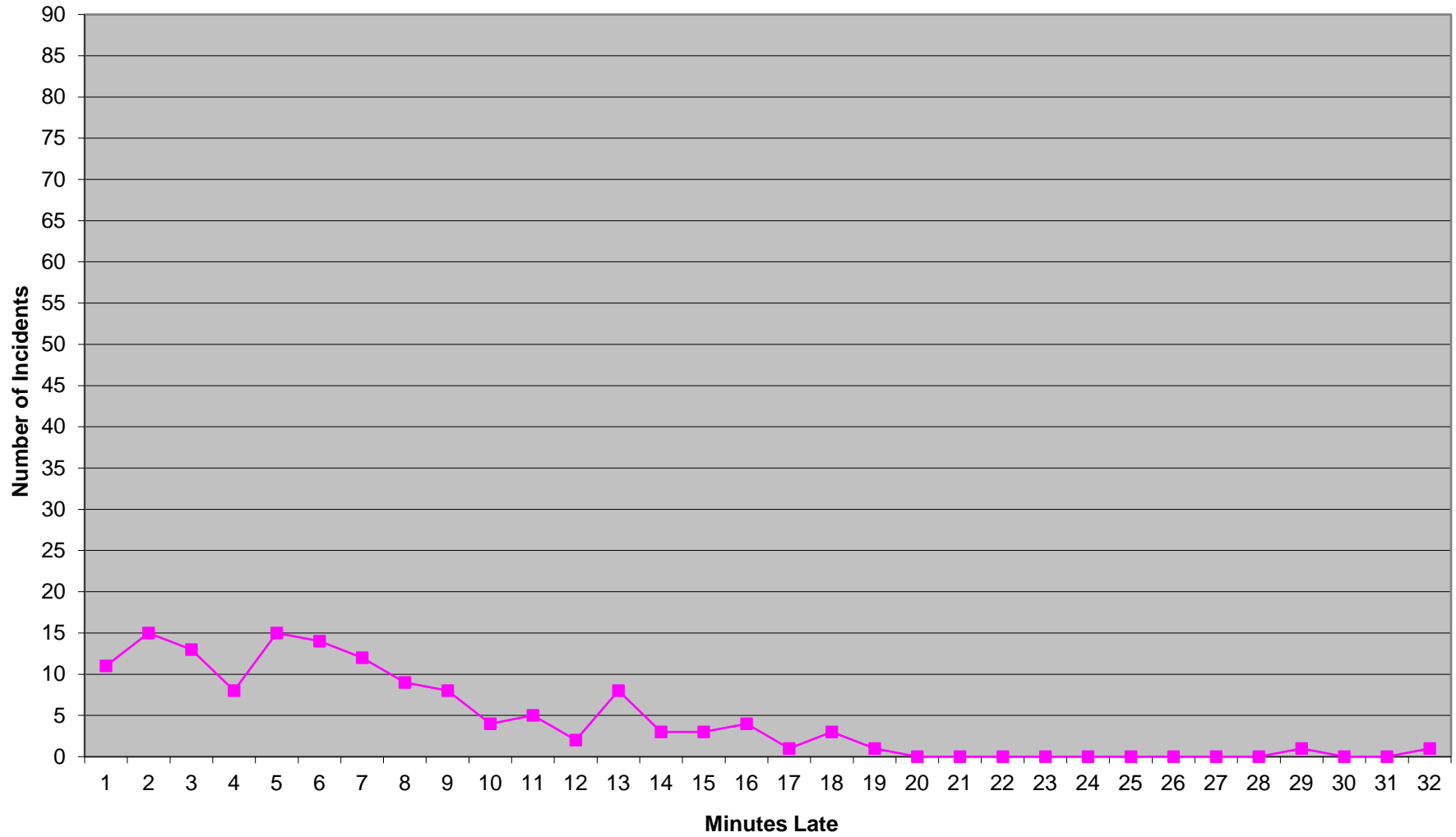
Eastern Division Priority 1 Late Calls December 2021



Western Division Priority 1 Late Calls December 2021



Edmond Priority 1 Late Calls December 2021



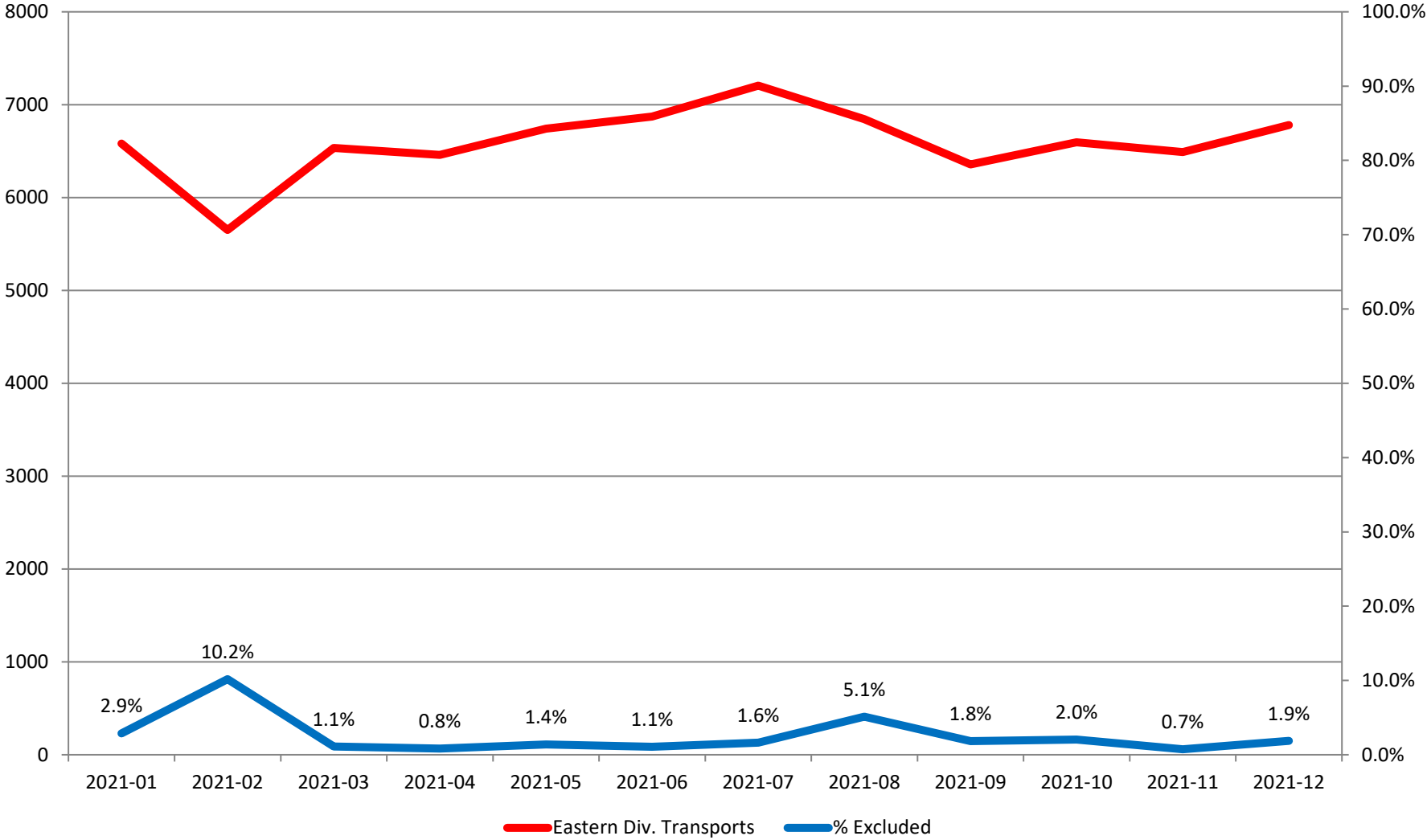
Response Time Exclusion Summary Report
 Three Months ending December, 2021

	Month Priority	2021-10				2021-11				2021-12			
		1	2	3	4	1	2	3	4	1	2	3	4
Eastern Division													
Final Other													
Final Other Declared Disaster													
Final Other 2nd Unit													
Final Other Interfacility Transfer													
Final System Overload		35	73	10		17	16	9		23	75	20	
Final Weather		16				4	2			7	1		
Eastern Exclusions Total		51	73	10	0	21	18	9	0	30	76	20	0
East Transports*		1947	3561	1071	17	1883	3552	1039	16	2031	3680	1051	18
East Late		303	347	243	1	258	304	298	1	335	416	385	5
East % of Transports		3%	2%	1%	0%	1%	1%	1%	0%	1%	2%	2%	0%
East Compliance**		84%	90%	77%	94%	86%	91%	71%	93%	83%	88%	63%	72%
East Compliance W/O Exclusions**		82%	88%	76%	94%	85%	90%	70%	93%	82%	86%	62%	72%
Western Division													
Final Other													
Final Other Declared Disaster													
Final Other 2nd Unit													
Final Other Interfacility Transfer													
Final System Overload		43	70	14		42	47	6		141	150	33	
Final Weather		40	35			17	8			19	14		
Western Exclusions Total		83	105	14	0	59	55	6	0	160	164	33	0
West Transports*		2594	3925	977	5	2429	3843	1086	9	2600	3925	1062	11
West Late		1178	863	498	3	1060	769	531	5	1246	1058	537	6
West % of Transports		3%	3%	1%	0%	2%	1%	1%	0%	6%	4%	3%	0%
West Compliance**		54%	78%	49%	40%	56%	79%	51%	44%	52%	73%	49%	45%
West Compliance W/O Exclusions**		52%	75%	48%	40%	55%	78%	50%	44%	49%	70%	47%	45%

* For the purposes of this report, transports means the number of transports that qualify for inclusion for compliance calculation purposes. Multi-unit response transports for greater than the first unit on

** For the purposes of this report, beneficiary and non-beneficiary cities have been combined. Contract compliance measures them separately.

Eastern Division Response Time Exclusions Twelve Months ending December, 2021



Western Division Response Time Exclusions Twelve Months ending December, 2021

