

Operational Compliance Report

August 2020

Frank Gresh

Chief Information Officer



“To serve our communities’ pre-hospital needs through value-driven, compassionate, and clinically superior care.”

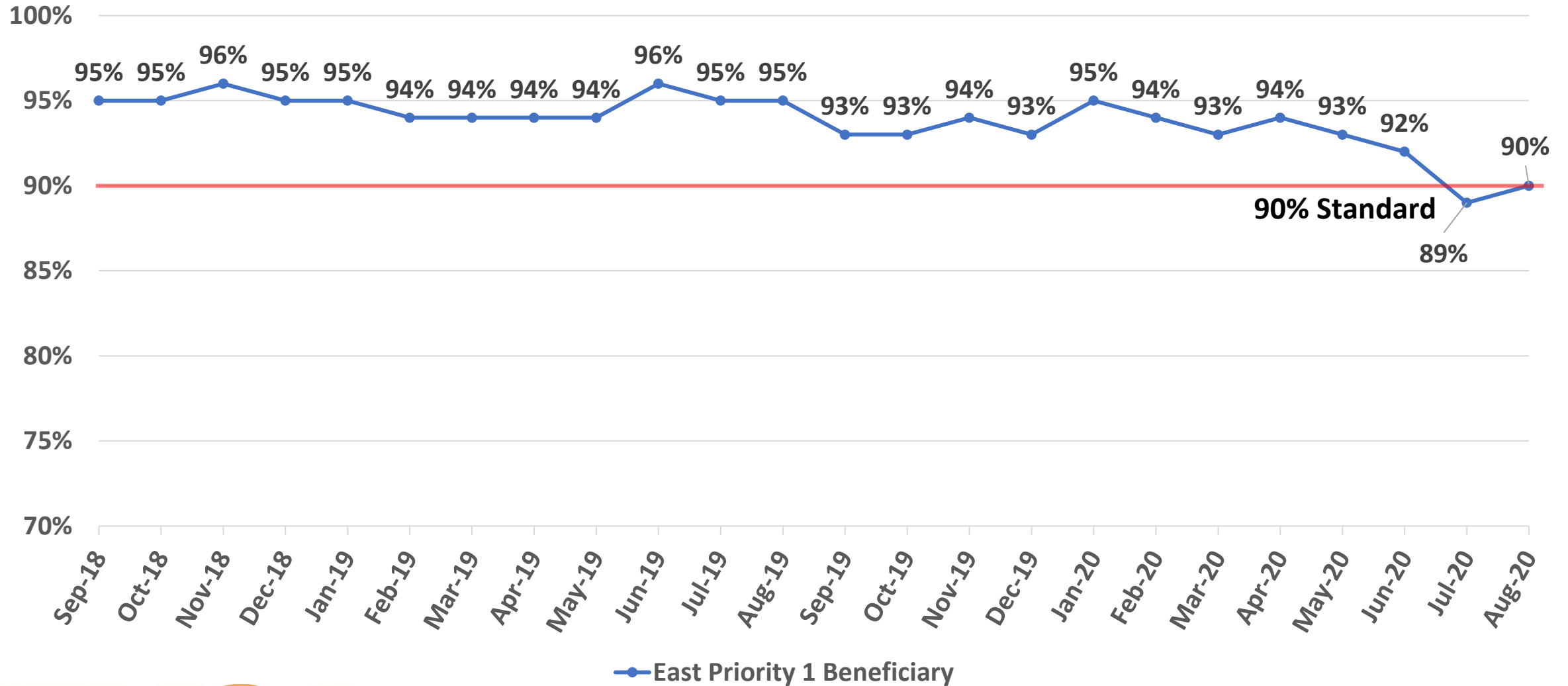
August 2020 Compliance Summary – Combined

	Priority 1	Priority 2	Priority 3	Priority 4
East Ben. Total	90%	96%	80%	83%
East NB Total	Priority 1&2	83%	0% <small>(1/1)</small>	N/A
West Ben. Total	76%	93%	65%	75%
West NB Total	Priority 1&2	74%	50% <small>(10/5)</small>	N/A



“To serve our communities’ pre-hospital needs through value-driven, compassionate, and clinically superior care.”

East Beneficiary Response Time Compliance

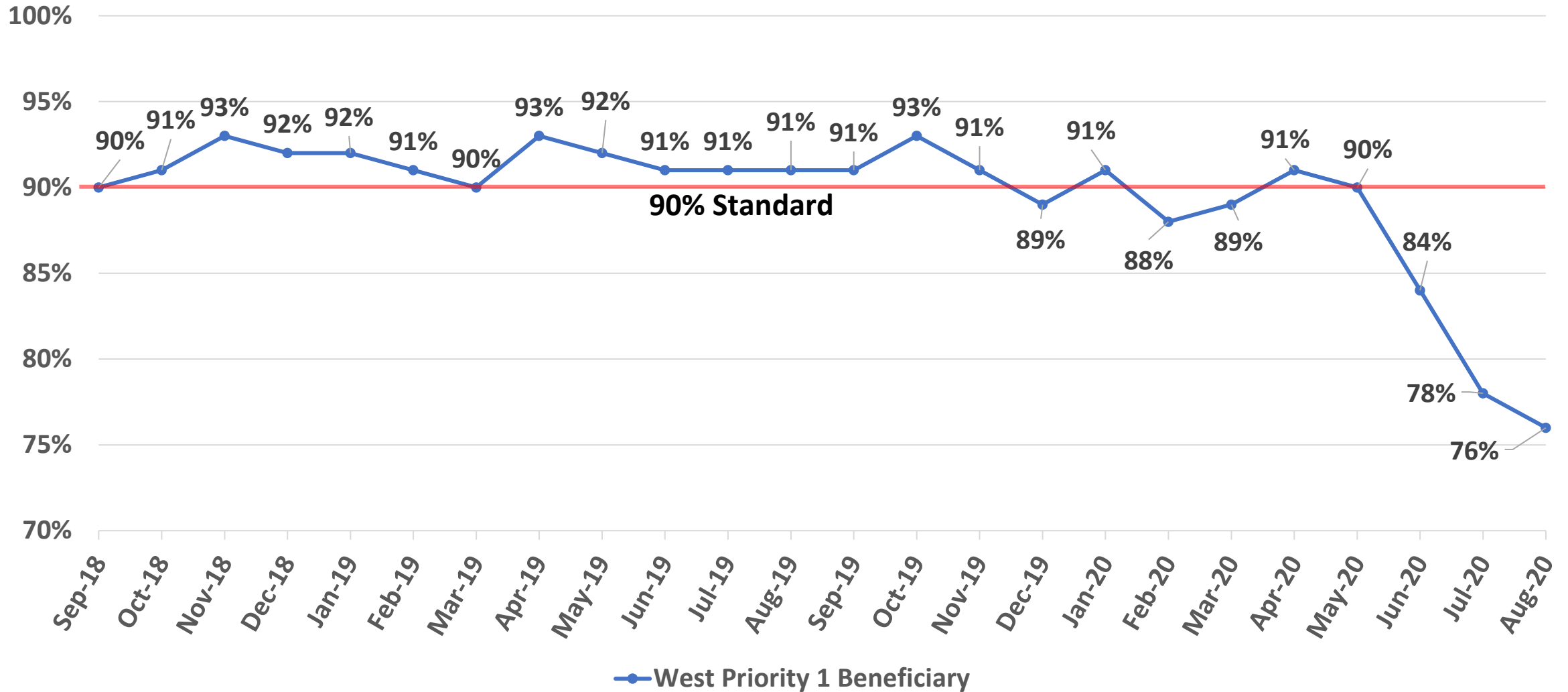


— East Priority 1 Beneficiary



“To serve our communities’ pre-hospital needs through value-driven, compassionate, and clinically superior care.”

West Beneficiary Response Time Compliance



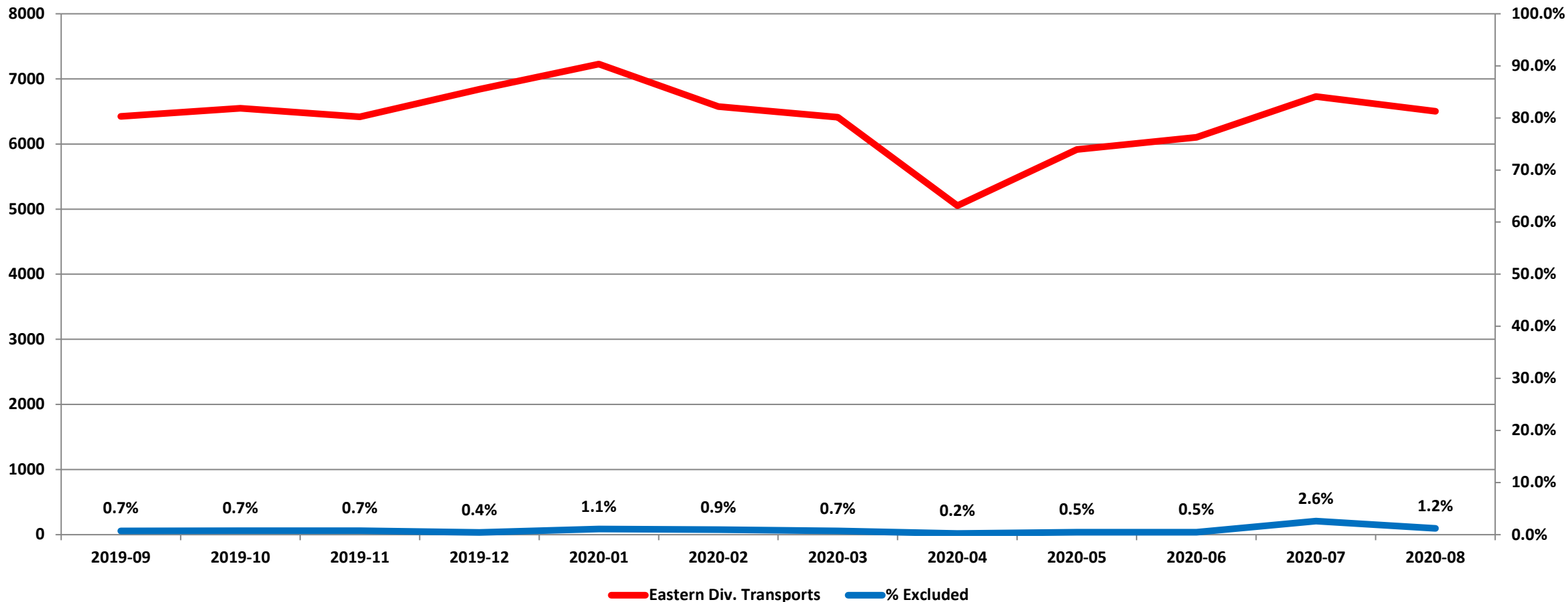
— West Priority 1 Beneficiary



“To serve our communities’ pre-hospital needs through value-driven, compassionate, and clinically superior care.”

Exclusions

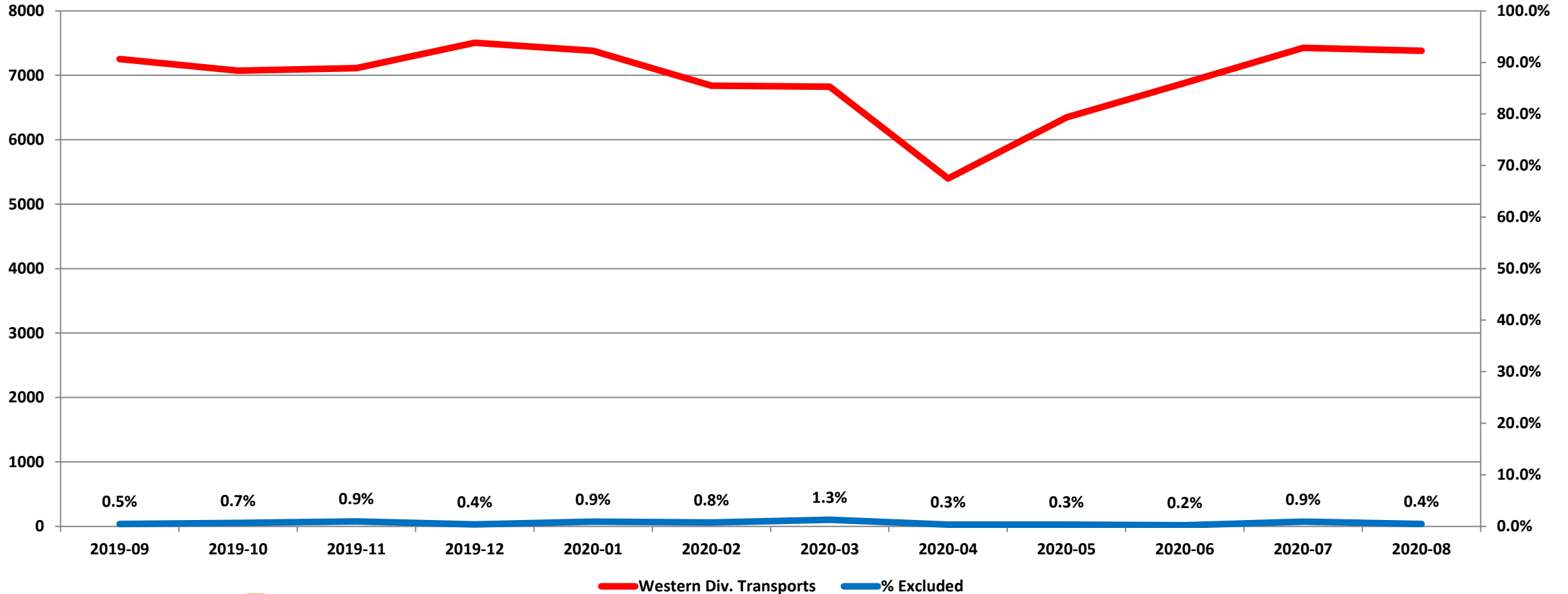
Eastern Division Response Time Exclusions Twelve Months ending August, 2020



“To serve our communities’ pre-hospital needs through value-driven, compassionate, and clinically superior care.”

Exclusions

Western Division Response Time Exclusions Twelve Months ending August, 2020



“To serve our communities’ pre-hospital needs through value-driven, compassionate, and clinically superior care.”