

Compliance Summary
From August 01, 2021 to August 31, 2021
Eastern Division
Overall Compliance

	Priority 1			Priority 2			Priority 3			Priority 4		
	Inc.	Late	%	Inc.	Late	%	Inc.	Late	%	Inc.	Late	%
Tulsa 1	615	97	84%	1,161	137	88%	411	170	58%	4	1	75%
Tulsa 2	578	101	82%	899	136	84%	8	0	100%	3	0	100%
Tulsa 3	755	121	83%	1,413	227	83%	515	193	62%	10	3	70%
Tulsa Total	1,948	319	83%	3,473	500	85%	934	363	61%	17	4	76%
Sand Springs	90	43		144	23	71%	0	0	N/A	0	0	N/A
Jenks	39	19		59	13	67%	2	0	100%	0	0	N/A
Bixby	59	34		79	29	54%	0	0	N/A	0	0	N/A
Total Non-Beneficiary	188	96		282	65	65%	2	0	100%	0	0	N/A

Average Response Time Priority 1 & 2

Received to On Scene: 13:36

Dispatched to On Scene: 10:54

The beneficiary city of Tulsa must be above 90% each month. In the suburbs of Sand Springs, Jenks and Bixby, the total of Priority 1 and Priority 2 incidents are combined to get the compliance percentile each month. Each suburban city must be above 75% each month, and combined they must be over 90 %. Percentage figures above are rounded down as per the RFP.

Compliance Summary
From August 01, 2021 to August 31, 2021
Western Division
Overall Compliance

	Priority 1			Priority 2			Priority 3			Priority 4		
	Inc.	Late	%	Inc.	Late	%	Inc.	Late	%	Inc.	Late	%
Oklahoma City 1	1,109	410	63%	1,703	431	74%	564	259	54%	8	5	37%
Oklahoma City 2	1,378	672	51%	1,776	519	70%	305	137	55%	4	1	75%
Edmond	222	134	39%	250	94	62%	126	86	31%	0	0	N/A
Total OKC & Edmond	2,709	1,216	55%	3,729	1,044	72%	995	482	51%	12	6	50%
Mustang	35	29		46	25	33%	8	7	12%	0	0	N/A
The Village	22	9		49	13	69%	2	1	50%	0	0	N/A
Nichols Hills	4	1		4	1	75%	0	0	N/A	0	0	N/A
Total Non-Beneficiary	61	39		99	39	51%	10	8	20%	0	0	N/A

Average Response Time Priority 1 & 2

Received to On Scene: 18:13

Dispatched to On Scene: 12:39

The beneficiary city of Oklahoma City must be above 90% each month. In the suburbs of Warr Acres, Bethany, Mustang, The Village, and Nichols Hills, the total of Priority 1 and Priority 2 incidents are combined to get the compliance percentile each month. Each suburban city must be above 75% each month, and combined they must be over 90%. Percentage figures above are rounded down as per the RFP.

**Compliance Summary
July 1, 2021 to July 31, 2021**

**Eastern Division
Non-discrimination**

	Priority 1		
	Inc.	Late	%
District 1	615	97	84%
District 2	578	101	82%
District 3	755	121	83%

Each district within the Beneficiary City of Tulsa must be individually above 75% on Priority 1 transports (with a minimum of 100 incidents in each for measurement). Percentage figures above are rounded down as per the RFP.

**Western Division
Non-discrimination**

	Priority 1		
	Inc.	Late	%
District 1	1109	410	63%
District 2	1378	672	51%
Edmond	222	134	39%

Each district of the Western Division must be individually above 75% on Priority 1 transports (with a minimum of 100 incidents in each for measurement). Percentage figures above are rounded down as per the RFP.

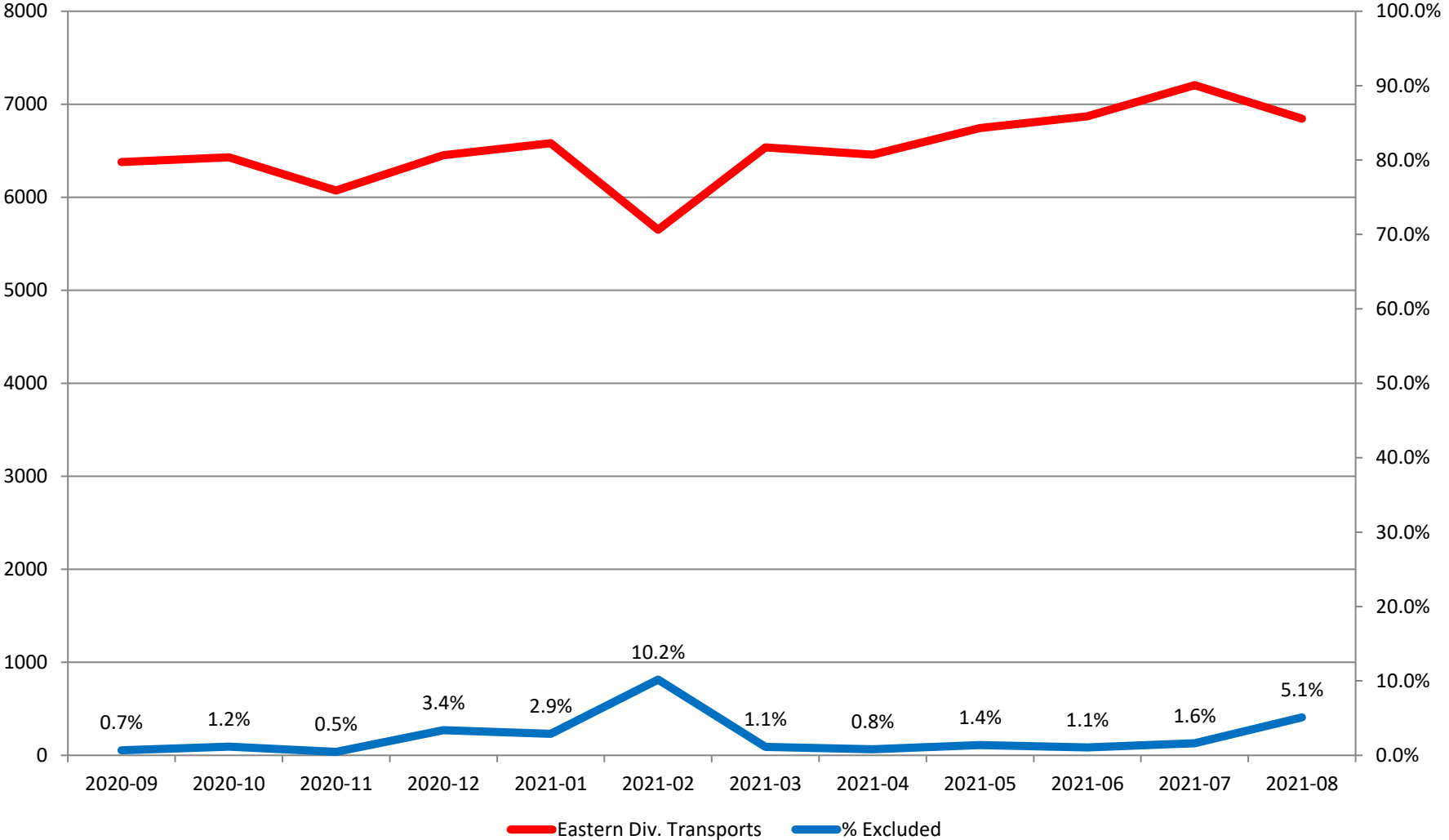
Response Time Exclusion Summary Report
 Three Months ending August, 2021

Month Priority	2021-06				2021-07				2021-08			
	1	2	3	4	1	2	3	4	1	2	3	4
Eastern Division												
Final Other												
Final Other Declared Disaster												
Final Other 2nd Unit												
Final Other Interfacility Transfer												
Final System Overload	32	28			36	59	5		90	231	26	1
Final Weather	10	4			10	7			2			
Eastern Exclusions Total	42	32	0	0	46	66	5	0	92	231	26	1
East Transports*	1955	3850	1045	21	2140	3969	1070	26	2136	3755	936	17
East Late	198	144	178	3	305	403	245	3	415	565	363	4
East % of Transports	2%	1%	0%	0%	2%	2%	0%	0%	4%	6%	3%	0%
East Compliance**	89%	96%	82%	85%	85%	89%	77%	88%	80%	84%	61%	76%
East Compliance W/O Exclusions**	87%	95%	82%	85%	83%	88%	76%	88%	77%	80%	59%	72%
<hr/>												
Month Priority	2021-06				2021-07				2021-08			
	1	2	3	4	1	2	3	4	1	2	3	4
Western Division												
Final Other												
Final Other Declared Disaster												
Final Other 2nd Unit												
Final Other Interfacility Transfer												
Final System Overload	103	114	15		167	169	31		283	317	47	1
Final Weather	14	4			39	14	1		68	61	1	
Western Exclusions Total	117	118	15	0	206	183	32	0	351	378	48	1
West Transports*	2444	4101	1166	8	2609	4060	1149	13	2770	3829	1006	12
West Late	826	611	374	1	1081	813	491	5	1285	1084	491	6
West % of Transports	5%	3%	1%	0%	8%	5%	3%	0%	13%	10%	5%	0%
West Compliance**	66%	85%	67%	87%	58%	79%	57%	61%	53%	71%	51%	50%
West Compliance W/O Exclusions**	63%	82%	67%	87%	54%	76%	55%	61%	47%	65%	48%	46%

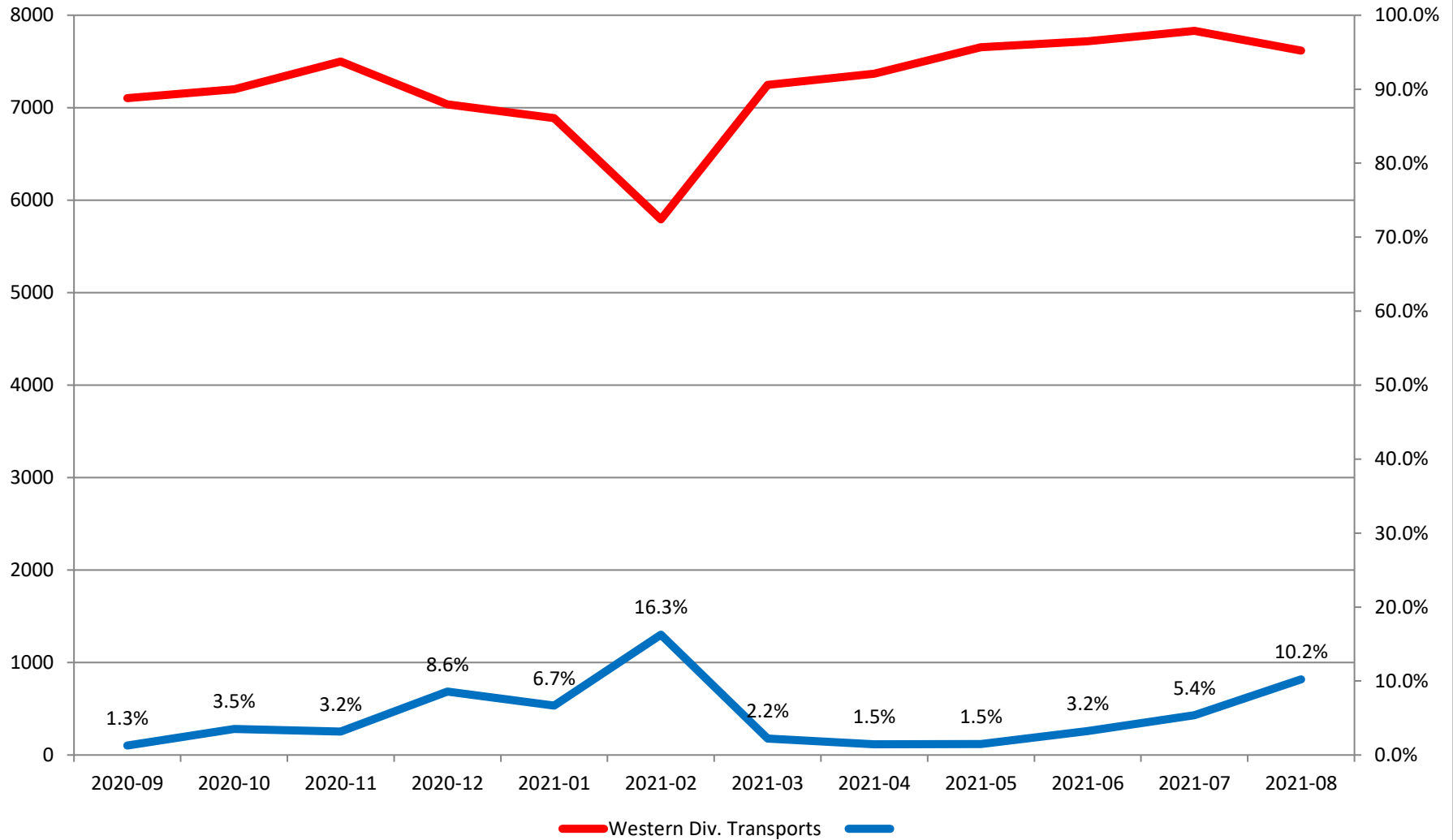
* For the purposes of this report, transports means the number of transports that qualify for inclusion for compliance calculation purposes. Multi-unit response transports for greater than the first unit on

** For the purposes of this report, beneficiary and non-beneficiary cities have been combined. Contract compliance measures them separately.

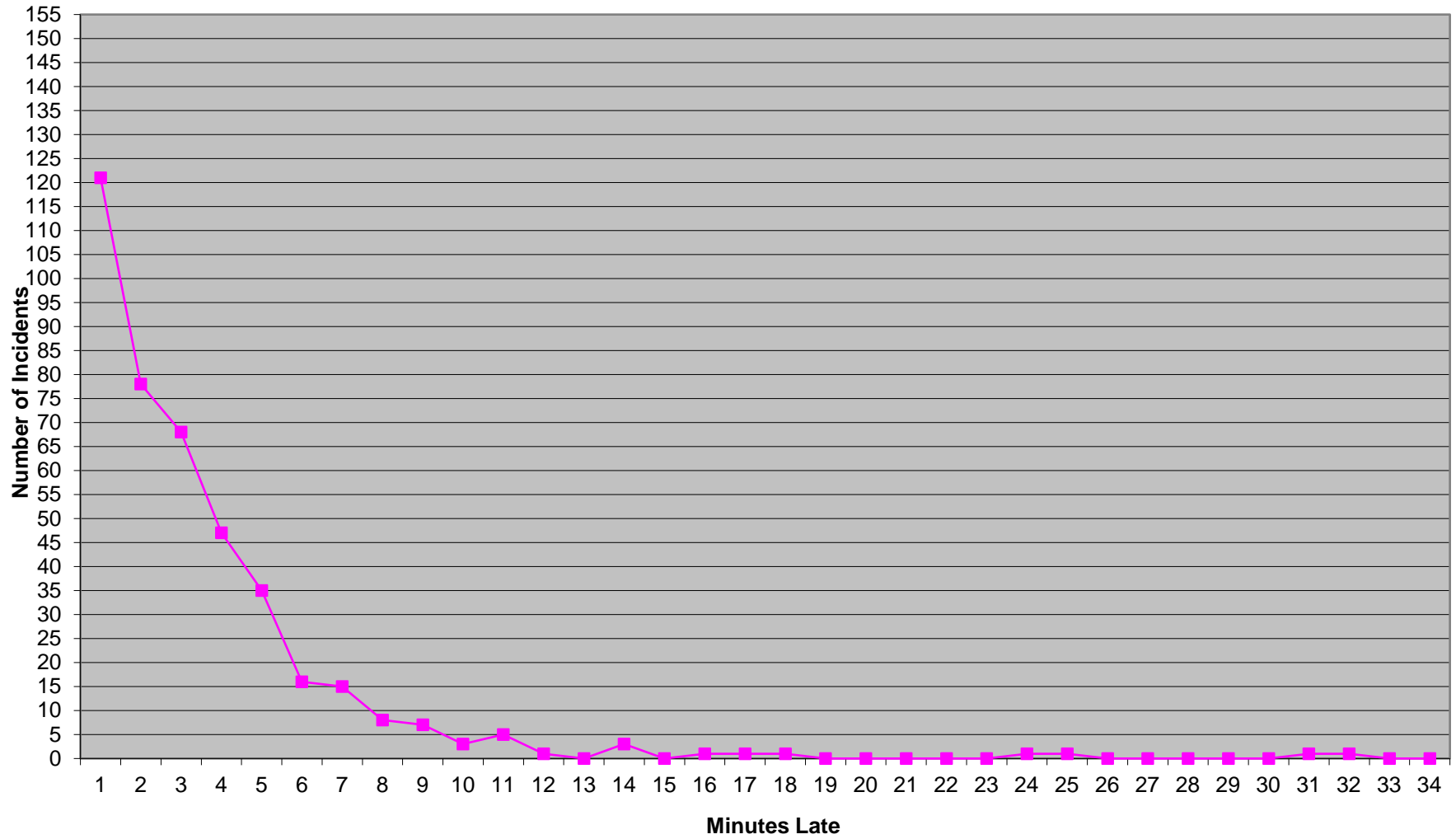
Eastern Division Response Time Exclusions Twelve Months ending August, 2021



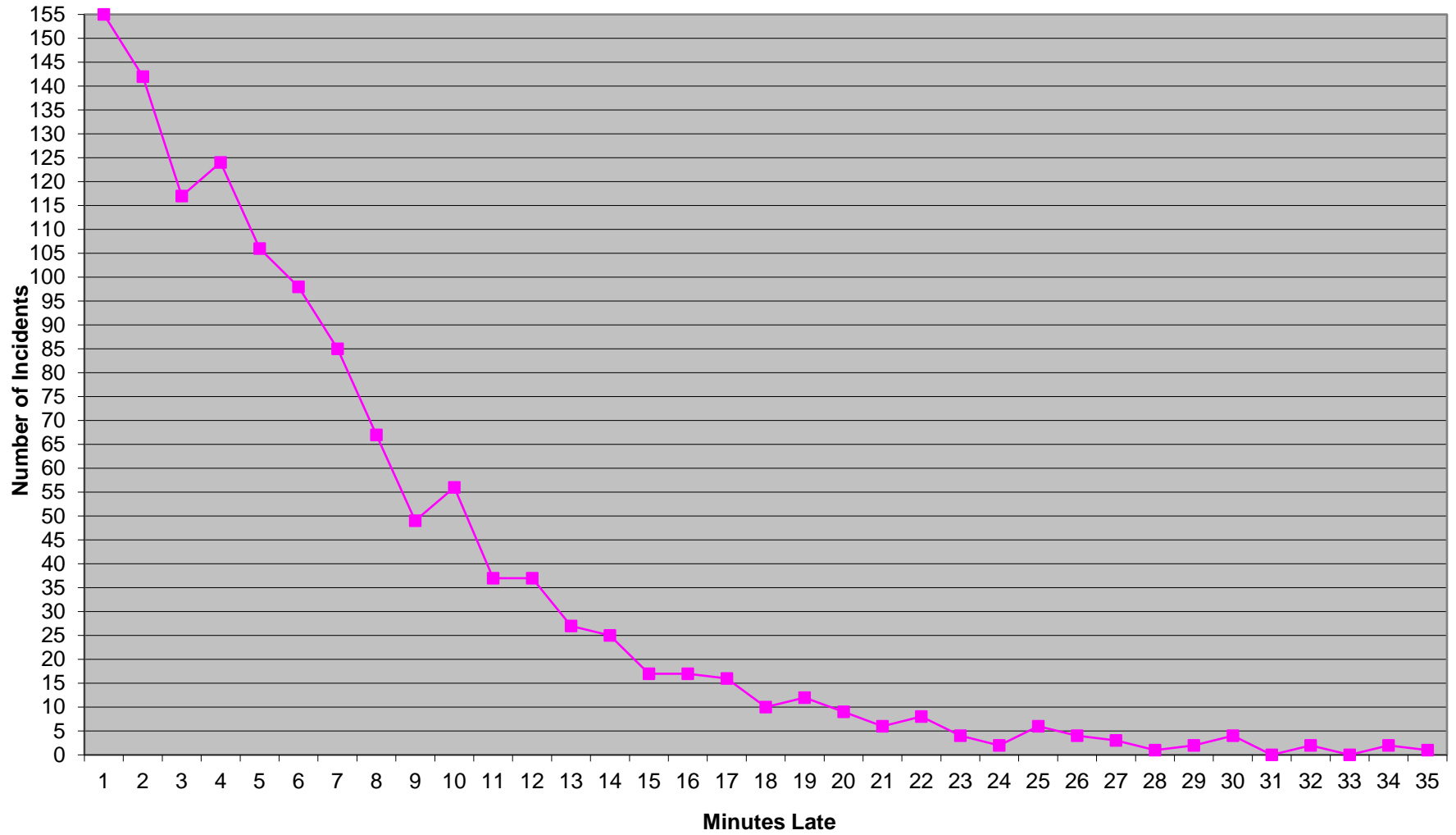
Western Division Response Time Exclusions Twelve Months ending August, 2021



Eastern Division Priority 1 Late Calls August 2021



Western Division Priority 1 Late Calls August 2021



Edmond Priority 1 Late Calls August 2021

