

# Compliance Summary

From April 01, 2021 to April 30, 2021

## Eastern Division Overall Compliance

	Priority 1			Priority 2			Priority 3			Priority 4		
	Inc.	Late	%	Inc.	Late	%	Inc.	Late	%	Inc.	Late	%
Tulsa 1	511	40	92%	1,023	37	96%	512	52	89%	2	0	100%
Tulsa 2	495	31	93%	914	30	96%	6	0	100%	0	0	N/A
Tulsa 3	718	52	92%	1,264	44	96%	580	82	85%	6	0	100%
<b>Tulsa Total</b>	<b>1,724</b>	<b>123</b>	<b>92%</b>	<b>3,201</b>	<b>111</b>	<b>96%</b>	<b>1,098</b>	<b>134</b>	<b>87%</b>	<b>8</b>	<b>0</b>	<b>100%</b>
Sand Springs	66	15		148	7	89%	1	0	100%	0	0	N/A
Jenks	33	10		58	5	83%	1	0	100%	0	0	N/A
Bixby	46	18		74	9	77%	0	0	N/A	0	0	N/A
<b>Total Non-Beneficiary</b>	<b>145</b>	<b>43</b>		<b>280</b>	<b>21</b>	<b>84%</b>	<b>2</b>	<b>0</b>	<b>100%</b>	<b>0</b>	<b>0</b>	<b>N/A</b>

**Average Response Time Priority 1 & 2**

**Received to On Scene: 10:24**  
**Dispatched to On Scene: 9:31**

The beneficiary city of Tulsa must be above 90% each month. In the suburbs of Sand Springs, Jenks and Bixby, the total of Priority 1 and Priority 2 incidents are combined to get the compliance percentile each month. Each suburban city must be above 75% each month, and combined they must be over 90 %. Percentage figures above are rounded down as per the RFP.

# Compliance Summary

From April 01, 2021 to April 30, 2021

## Western Division Overall Compliance

	Priority 1			Priority 2			Priority 3			Priority 4		
	Inc.	Late	%	Inc.	Late	%	Inc.	Late	%	Inc.	Late	%
Oklahoma City 1	1,020	199	80%	1,866	108	94%	696	130	81%	15	3	80%
Oklahoma City 2	1,044	283	72%	1,689	177	89%	303	51	83%	3	2	33%
Edmond	177	60	66%	302	51	83%	69	14	79%	0	0	N/A
<b>Total OKC &amp; Edmond</b>	<b>2,241</b>	<b>542</b>	<b>75%</b>	<b>3,857</b>	<b>336</b>	<b>91%</b>	<b>1,068</b>	<b>195</b>	<b>81%</b>	<b>18</b>	<b>5</b>	<b>72%</b>
Mustang	43	19		49	10	68%	12	7	41%	0	0	N/A
The Village	29	6		39	4	85%	0	0	N/A	0	0	N/A
Nichols Hills	5	2		6	0	81%	0	0	N/A	0	0	N/A
<b>Total Non-Beneficiary</b>	<b>77</b>	<b>27</b>		<b>94</b>	<b>14</b>	<b>76%</b>	<b>12</b>	<b>7</b>	<b>41%</b>	<b>0</b>	<b>0</b>	<b>N/A</b>

Average Response Time Priority 1 & 2

Received to On Scene: 12:22

Dispatched to On Scene: 11:09

The beneficiary city of Oklahoma City must be above 90% each month. In the suburbs of Mustang, The Village, and Nichols Hills, the total of Priority 1 and Priority 2 incidents are combined to get the compliance percentile each month. Each suburban city must be above 75% each month, and combined they must be over 90%. Percentage figures above are rounded down as per the RFP.

**Compliance Summary**  
**April 1, 2021 to April 30, 2021**

**Eastern Division**  
**Non-discrimination**

	<b>Priority 1</b>		
	<b>Inc.</b>	<b>Late</b>	<b>%</b>
<b>District 1</b>	511	40	92%
<b>District 2</b>	495	31	93%
<b>District 3</b>	718	52	92%

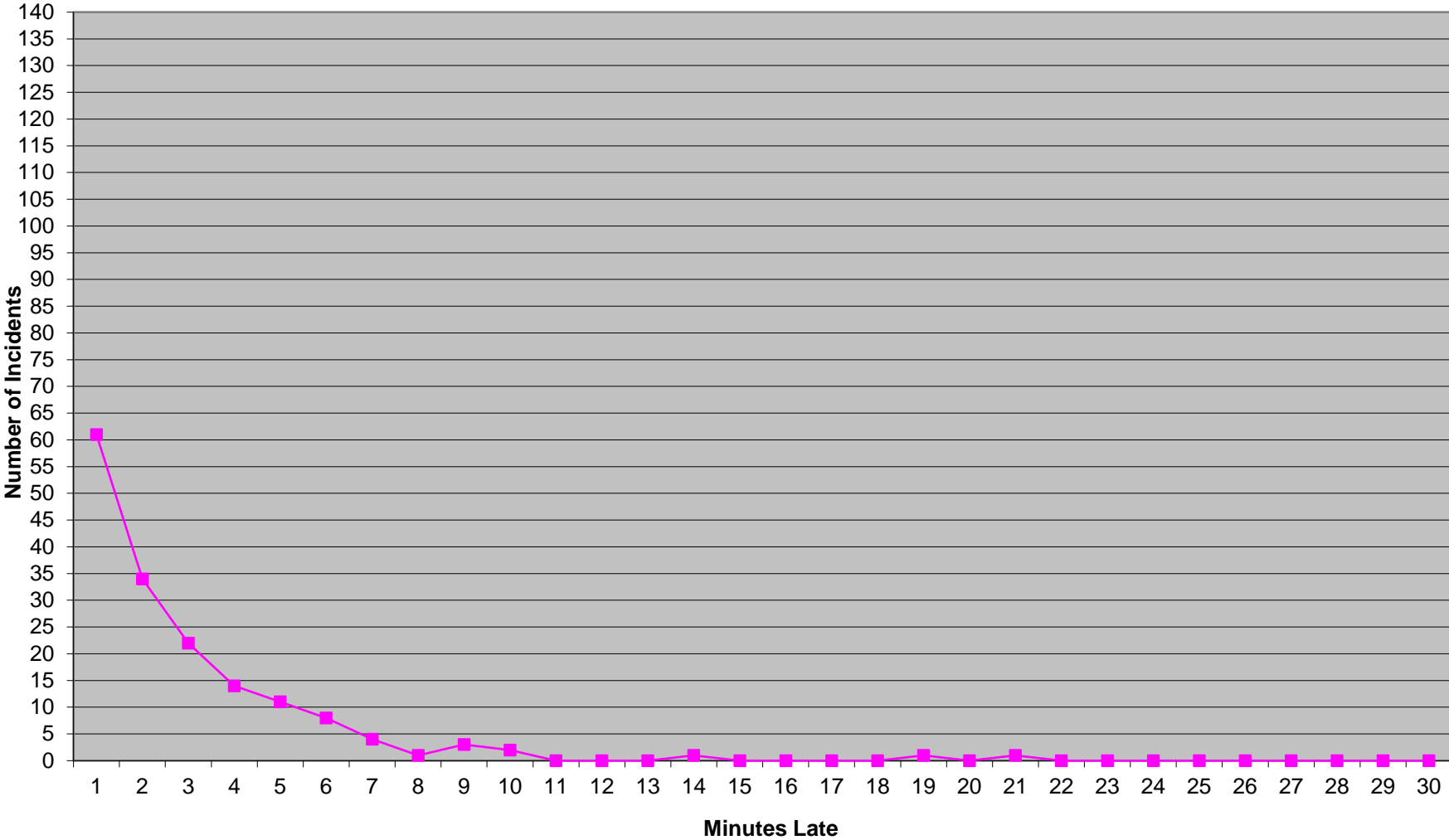
Each district within the Beneficiary City of Tulsa must be individually above 75% on Priority 1 transports (with a minimum of 100 incidents in each for measurement). Percentage figures above are rounded down as per the RFP.

**Western Division**  
**Non-discrimination**

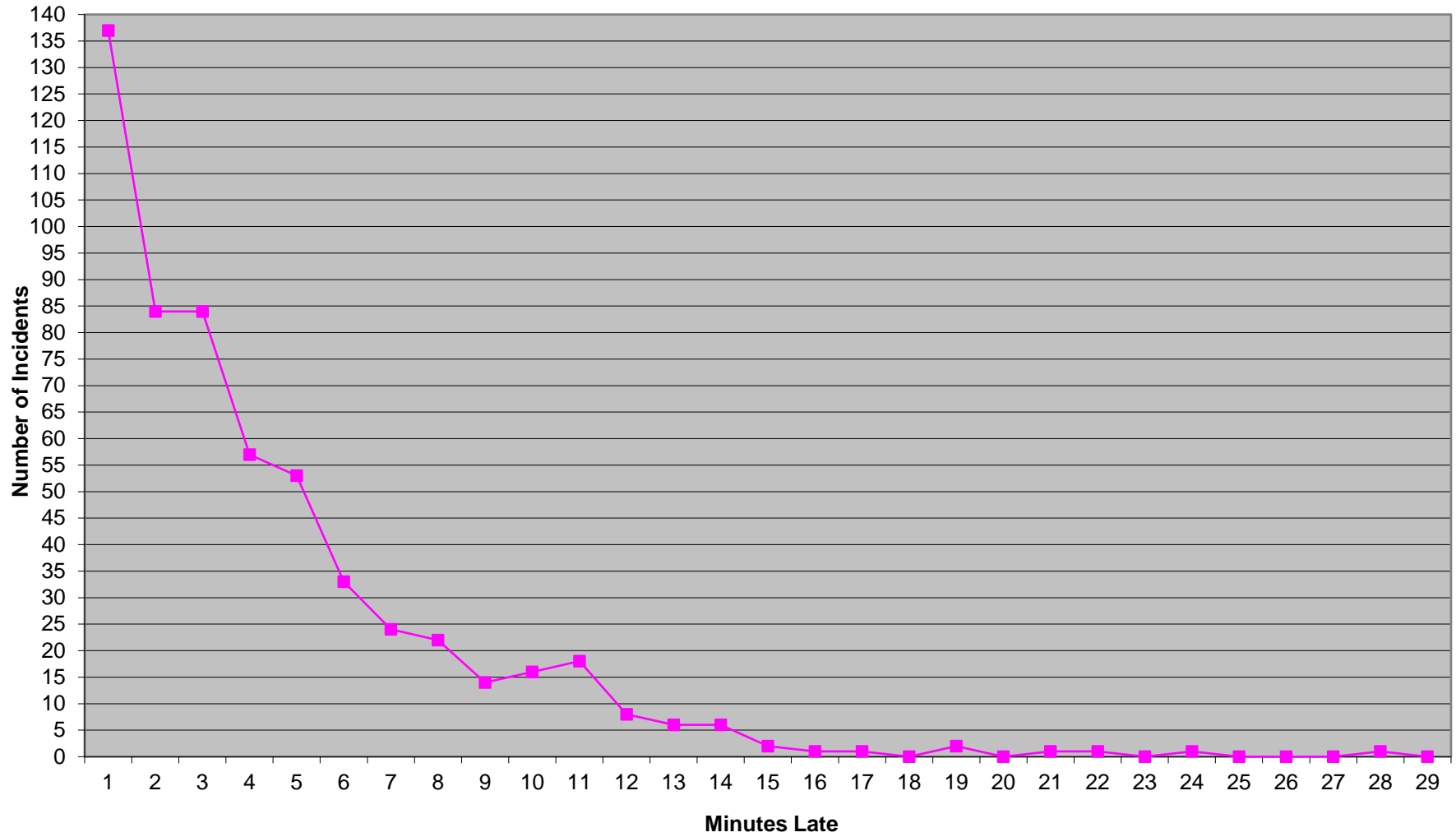
	<b>Priority 1</b>		
	<b>Inc.</b>	<b>Late</b>	<b>%</b>
<b>District 1</b>	1020	199	80%
<b>District 2</b>	1044	283	72%
<b>Edmond</b>	177	60	66%

Each district of the Western Division must be individually above 75% on Priority 1 transports (with a minimum of 100 incidents in each for measurement). Percentage figures above are rounded down as per the RFP.

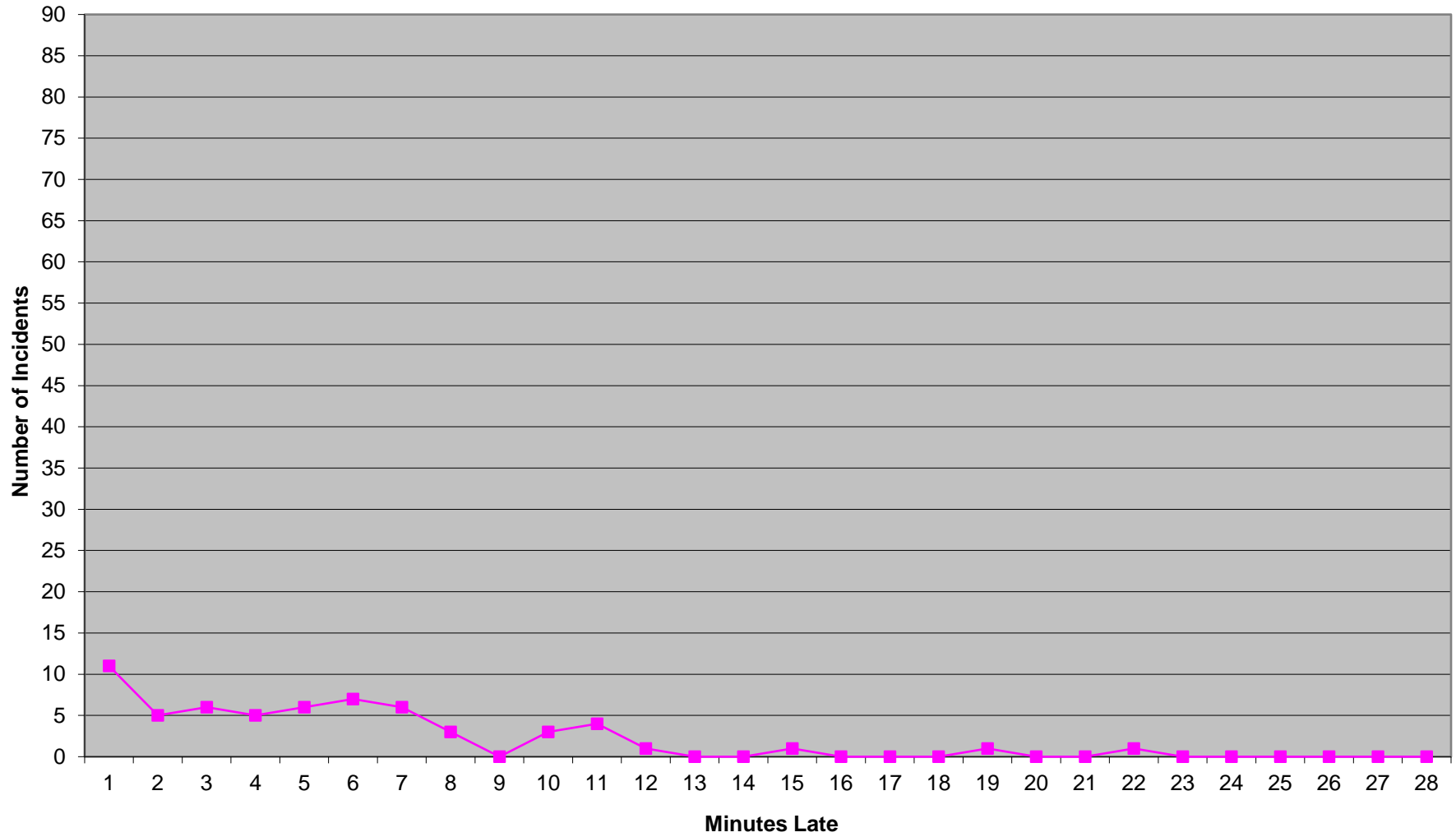
# Eastern Division Priority 1 Late Calls April 2021



### Western Division Priority 1 Late Calls April 2021



### Edmond Priority 1 Late Calls April 2021



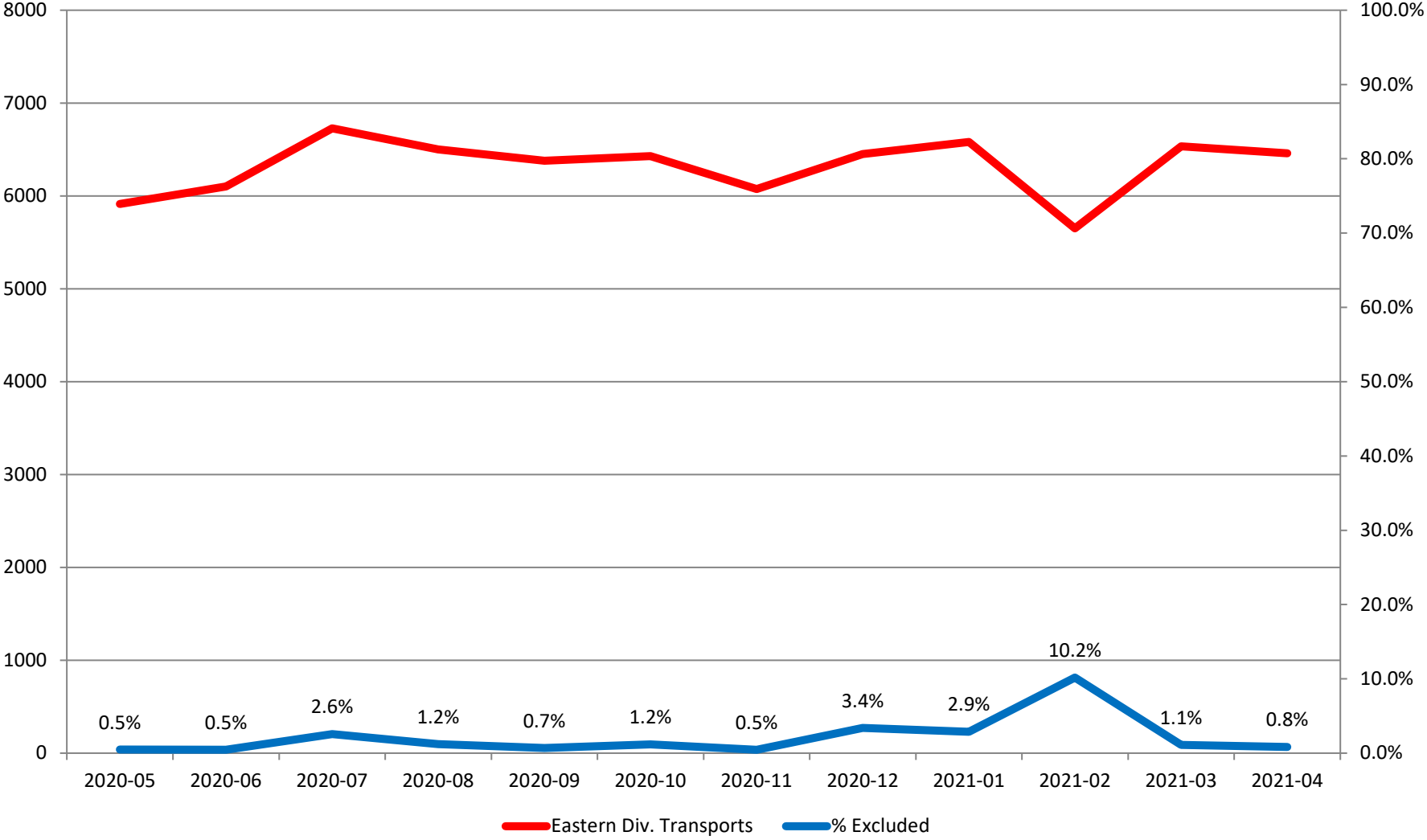
Response Time Exclusion Summary Report  
 Three Months ending April, 2021

Month Priority	2021-02				2021-03				2021-04			
	1	2	3	4	1	2	3	4	1	2	3	4
<b>Eastern Division</b>												
Final Other												
Final Other Declared Disaster												
Final Other 2nd Unit												
Final Other Interfacility Transfer												
Final System Overload	21	24	17		23	25	3		13	12	6	
Final Weather	181	249	80	3	17	5			11	7	4	
<b>Eastern Exclusions Total</b>	<b>202</b>	<b>273</b>	<b>97</b>	<b>3</b>	<b>40</b>	<b>30</b>	<b>3</b>	<b>0</b>	<b>24</b>	<b>19</b>	<b>10</b>	<b>0</b>
<b>East Transports*</b>	1507	3191	928	25	1819	3652	1052	12	1869	3481	1100	8
<b>East Late</b>	131	114	134	1	193	193	211	3	166	132	134	0
<b>East % of Transports</b>	13%	9%	10%	12%	2%	1%	0%	0%	1%	1%	1%	0%
<b>East Compliance**</b>	91%	96%	85%	96%	89%	94%	79%	75%	91%	96%	87%	100%
<b>East Compliance W/O Exclusions**</b>	80%	88%	77%	85%	87%	93%	79%	75%	89%	95%	87%	100%
<b>Western Division</b>												
<b>Western Division</b>												
Final Other												
Final Other Declared Disaster												
Final Other 2nd Unit												
Final Other Interfacility Transfer												
Final System Overload	127	88	45	1	46	50	6		39	35	5	
Final Weather	304	293	84	0	29	17	14		18	9	1	
<b>Western Exclusions Total</b>	<b>431</b>	<b>381</b>	<b>129</b>	<b>1</b>	<b>75</b>	<b>67</b>	<b>20</b>	<b>0</b>	<b>57</b>	<b>44</b>	<b>6</b>	<b>0</b>
<b>West Transports*</b>	1767	3145	868	12	2418	3773	1020	37	2318	3951	1080	18
<b>West Late</b>	435	262	253	1	687	374	310	10	569	350	202	5
<b>West % of Transports</b>	24%	12%	15%	0%	3%	2%	2%	0%	2%	1%	1%	0%
<b>West Compliance**</b>	75%	91%	70%	91%	71%	90%	69%	72%	75%	91%	81%	72%
<b>West Compliance W/O Exclusions**</b>	60%	81%	61%	84%	69%	88%	68%	72%	73%	90%	80%	72%

\* For the purposes of this report, transports means the number of transports that qualify for inclusion for compliance calculation purposes. Multi-unit response transports for greater than the first unit on

\*\* For the purposes of this report, beneficiary and non-beneficiary cities have been combined. Contract compliance measures them separately.

# Eastern Division Response Time Exclusions Twelve Months ending April, 2021





## Western Division Response Time Exclusions Twelve Months ending April, 2021

