

Compliance Summary

From April 01, 2022 to April 30, 2022

Eastern Division Overall Compliance

	Priority 1			Priority 2			Priority 3			Priority 4		
	Inc.	Late	%	Inc.	Late	%	Inc.	Late	%	Inc.	Late	%
Tulsa 1	498	41	91%	982	42	95%	442	61	86%	3	0	100%
Tulsa 2	491	45	90%	835	39	95%	11	1	90%	4	2	50%
Tulsa 3	751	60	92%	1,331	73	94%	491	80	83%	9	2	77%
Tulsa Total	1,740	146	91%	3,148	154	95%	944	142	84%	16	4	75%
Sand Springs	85	32		112	6	80%	0	0	N/A	0	0	N/A
Jenks	41	11		60	6	83%	0	0	N/A	0	0	N/A
Bixby	37	9		84	13	81%	0	0	N/A	0	0	N/A
Total Non-Beneficiary	163	52		256	25	81%	0	0	N/A	0	0	N/A

Average Response Time Priority 1 & 2

Received to On Scene: 10:19

Dispatched to On Scene: 9:17

The beneficiary city of Tulsa must be above 90% each month. In the suburbs of Sand Springs, Jenks and Bixby, the total of Priority 1 and Priority 2 incidents are combined to get the compliance percentile each month. Each suburban city must be above 75% each month, and combined they must be over 90 %. Percentage figures above are rounded down as per the RFP.

Compliance Summary

From April 01, 2022 to April 30, 2022

Western Division Overall Compliance

	Priority 1			Priority 2			Priority 3			Priority 4		
	Inc.	Late	%	Inc.	Late	%	Inc.	Late	%	Inc.	Late	%
Oklahoma City 1	964	248	74%	1,720	250	85%	735	226	69%	15	6	60%
Oklahoma City 2	987	422	57%	1,710	331	80%	345	124	64%	5	0	100%
Edmond	182	89	51%	248	58	76%	85	38	55%	0	0	N/A
Total OKC & Edmond	2,133	759	64%	3,678	639	82%	1,165	388	66%	20	6	70%
Mustang	0	0		0	0	N/A	1	0	100%	0	0	N/A
The Village	30	12		40	6	74%	0	0	N/A	0	0	N/A
Nichols Hills	7	4		7	0	71%	0	0	N/A	0	0	N/A
Total Non-Beneficiary	37	16		47	6	73%	1	0	100%	0	0	N/A

Average Response Time Priority 1 & 2

Received to On Scene: 15:14

Dispatched to On Scene: 12:32

The beneficiary city of Oklahoma City must be above 90% each month. In the suburbs of Mustang, The Village, and Nichols Hills, the total of Priority 1 and Priority 2 incidents are combined to get the compliance percentile each month. Each suburban city must be above 75% each month, and combined they must be over 90%. Percentage figures above are rounded down as per the RFP.

Compliance Summary
April 1, 2022 to April 30, 2022

Eastern Division
Non-discrimination

	Priority 1		
	Inc.	Late	%
District 1	498	41	91.8%
District 2	491	45	90.8%
District 3	751	60	92.0%

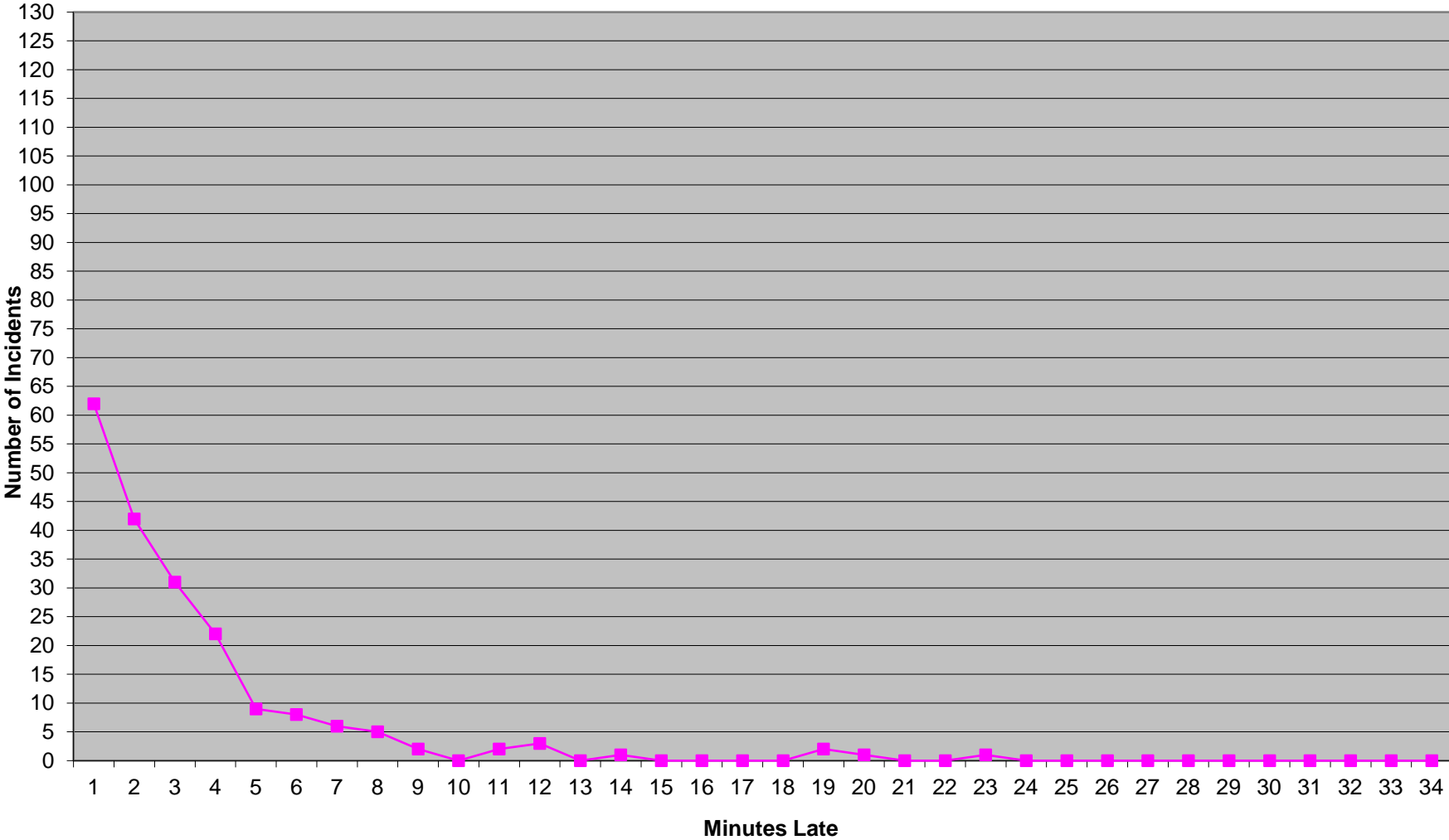
Each district within the Beneficiary City of Tulsa must be individually above 75% on Priority 1 transports (with a minimum of 100 incidents in each for measurement). Percentage figures above are rounded down as per the RFP.

Western Division
Non-discrimination

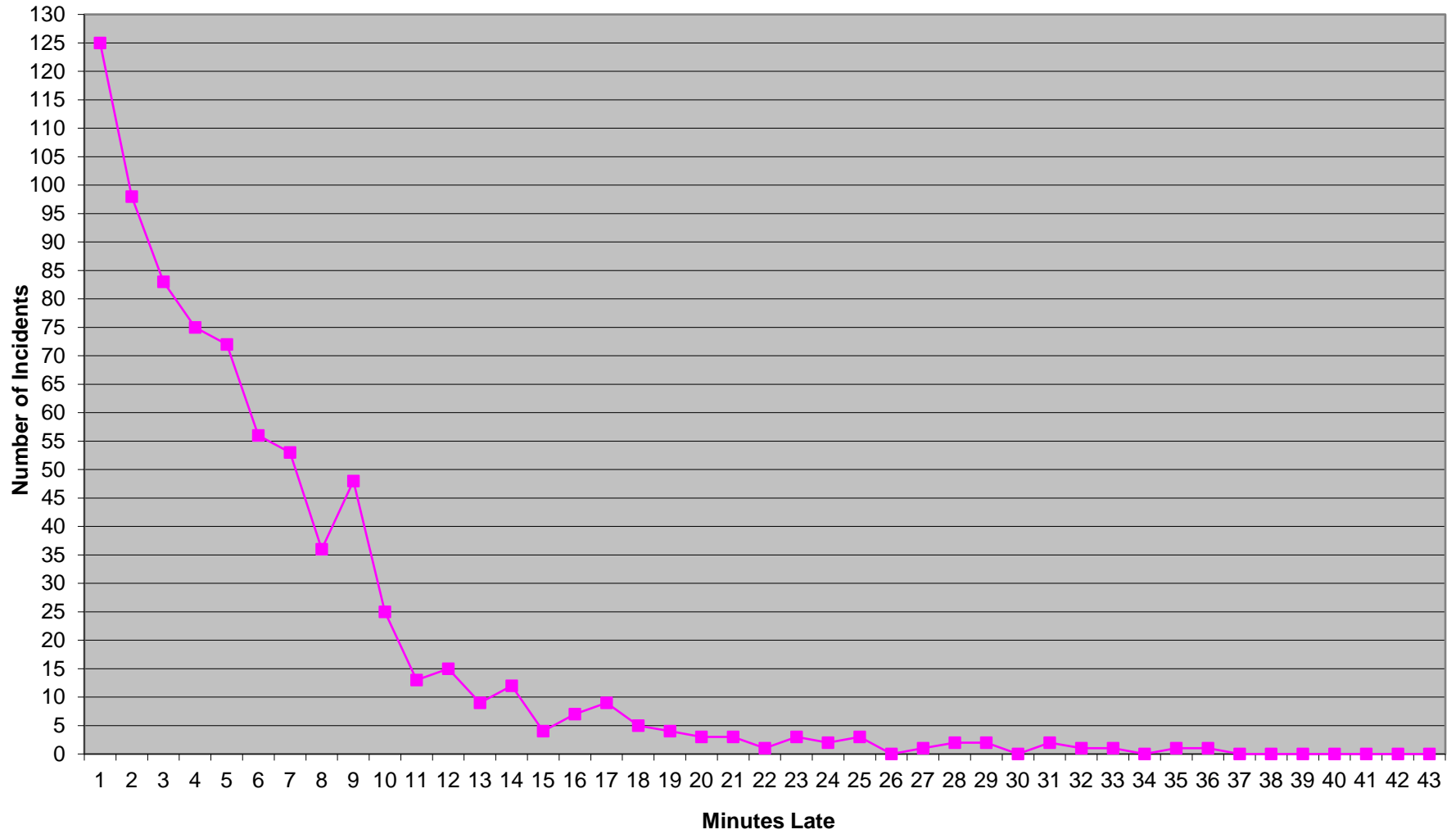
	Priority 1		
	Inc.	Late	%
District 1	964	248	74.3%
District 2	987	422	57.2%
Edmond	182	89	51.1%

Each district of the Western Division must be individually above 75% on Priority 1 transports (with a minimum of 100 incidents in each for measurement). Percentage figures above are rounded down as per the RFP.

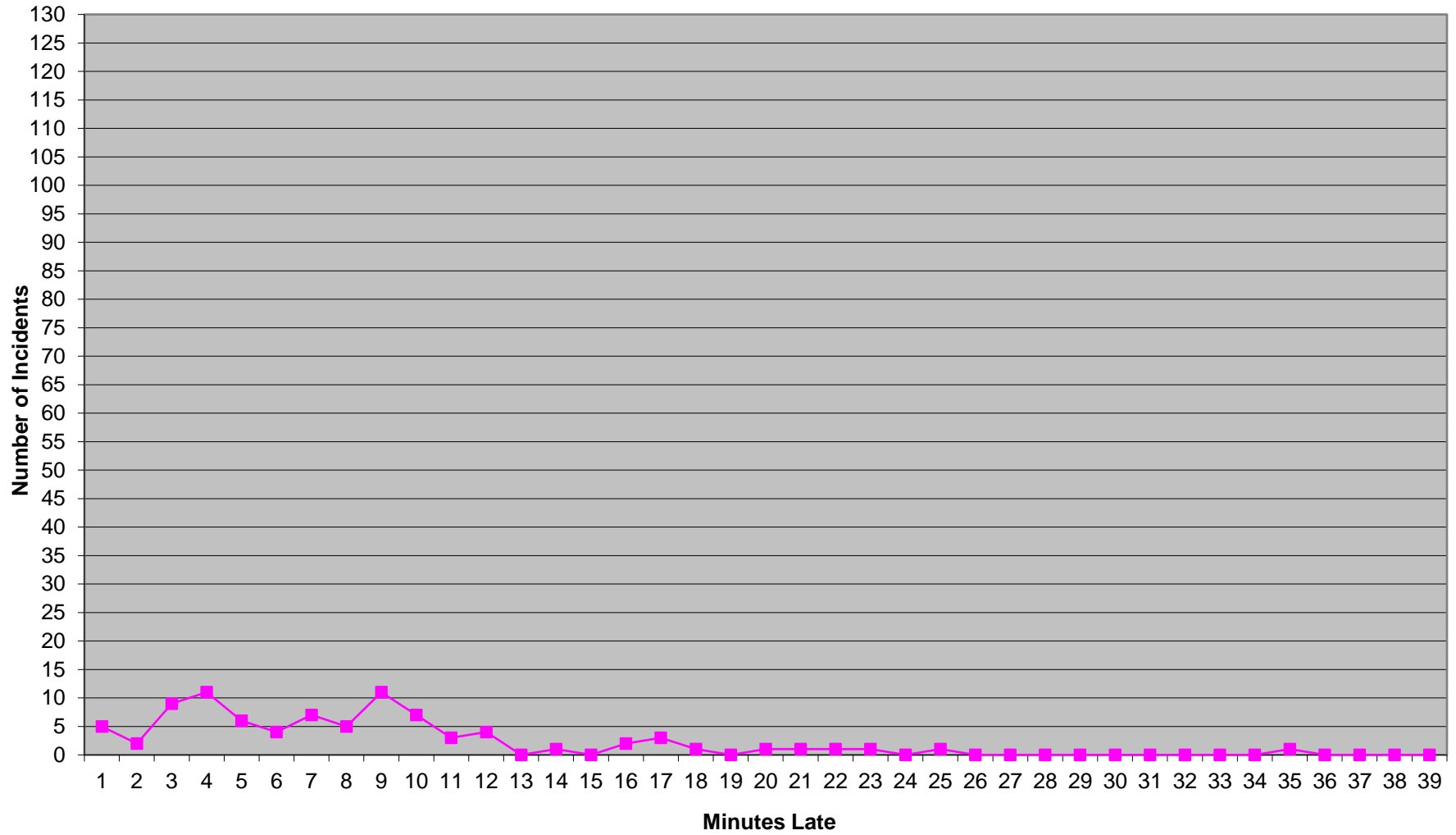
Eastern Division Priority 1 Late Calls April 2022



Western Division Priority 1 Late Calls April 2022



Edmond Priority 1 Late Calls April 2022



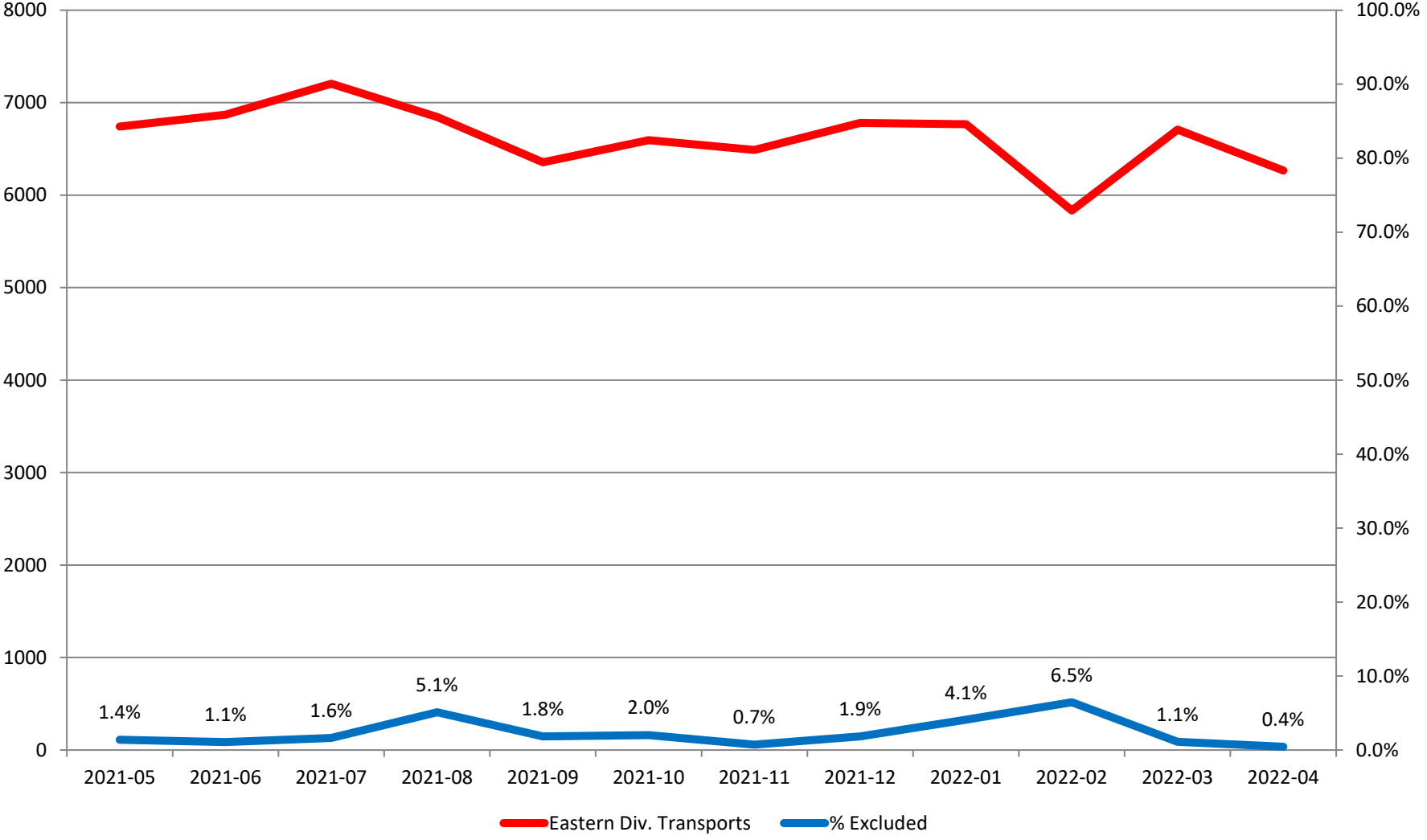
Response Time Exclusion Summary Report
 Three Months ending April, 2022

	Month Priority	2022-02				2022-03				2022-04			
		1	2	3	4	1	2	3	4	1	2	3	4
Eastern Division													
Final Other													
Final Other Declared Disaster													
Final Other 2nd Unit													
Final Other Interfacility Transfer													
Final System Overload		76	113	23		23	29	10		13	11		
Final Weather		85	50	30		9	2	2		4			
Eastern Exclusions Total		161	163	53	0	32	31	12	0	17	11	0	0
East Transports*		1684	3199	923	28	2020	3662	1011	16	1903	3404	944	16
East Late		276	310	252	9	221	218	241	1	198	179	142	4
East % of Transports		10%	5%	6%	0%	2%	1%	1%	0%	1%	0%	0%	0%
East Compliance**		83%	90%	72%	67%	89%	94%	76%	93%	89%	94%	84%	75%
East Compliance W/O Exclusions**		76%	85%	68%	67%	87%	93%	75%	93%	88%	94%	84%	75%
Western Division													
Final Other													
Final Other Declared Disaster													
Final Other 2nd Unit													
Final Other Interfacility Transfer													
Final System Overload		36	48	6		48	50	10		36	37	3	
Final Weather		69	45	7		43	27	1	1	22	18		
Western Exclusions Total		105	93	13	0	91	77	11	1	58	55	3	0
West Transports*		2154	3323	1050	9	2424	3900	1173	13	2170	3725	1166	20
West Late		1026	870	483	1	1015	849	460	9	775	645	388	6
West % of Transports		5%	3%	1%	0%	4%	2%	1%	8%	3%	1%	0%	0%
West Compliance**		52%	73%	54%	88%	58%	78%	60%	30%	64%	82%	66%	70%
West Compliance W/O Exclusions**		49%	71%	53%	88%	56%	76%	60%	28%	62%	81%	66%	70%

* For the purposes of this report, transports means the number of transports that qualify for inclusion for compliance calculation purposes. Multi-unit response transports for greater than the first unit on

** For the purposes of this report, beneficiary and non-beneficiary cities have been combined. Contract compliance measures them separately.

Eastern Division Response Time Exclusions Twelve Months ending April, 2022



Western Division Response Time Exclusions Twelve Months ending April, 2022

