

Operational Compliance Report

February 2022

Frank Gresh

Interim Chief Operating Officer



“To serve our communities’ pre-hospital needs through value-driven, compassionate, and clinically superior care.”

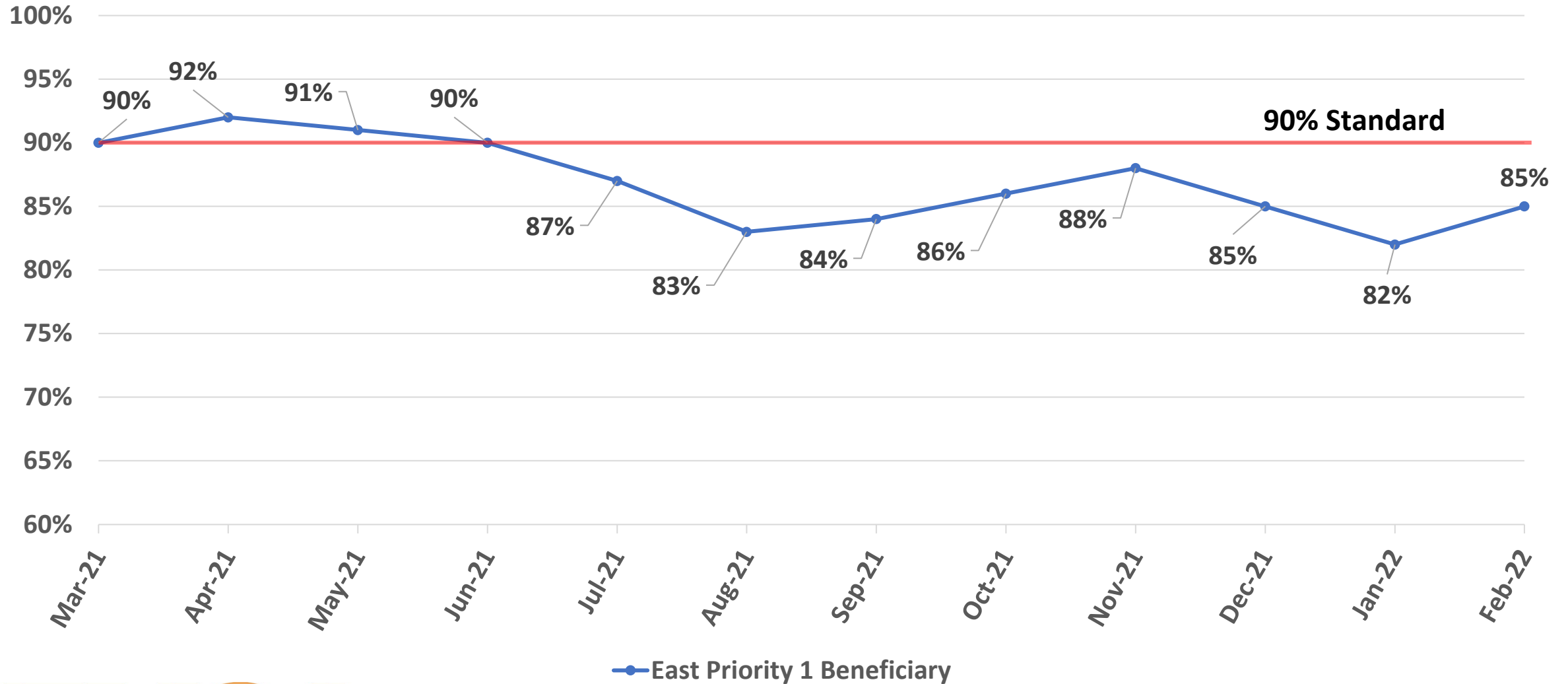
February 2022 Compliance Summary – Combined

	Priority 1	Priority 2	Priority 3	Priority 4
East Ben. Total	85%	91%	72%	67%
East NB Total	Priority 1&2	72%	0%	N/A
West Ben. Total	52%	73%	54%	88%
West NB Total	Priority 1&2	74%	0%	N/A



“To serve our communities’ pre-hospital needs through value-driven, compassionate, and clinically superior care.”

East Beneficiary Response Time Compliance

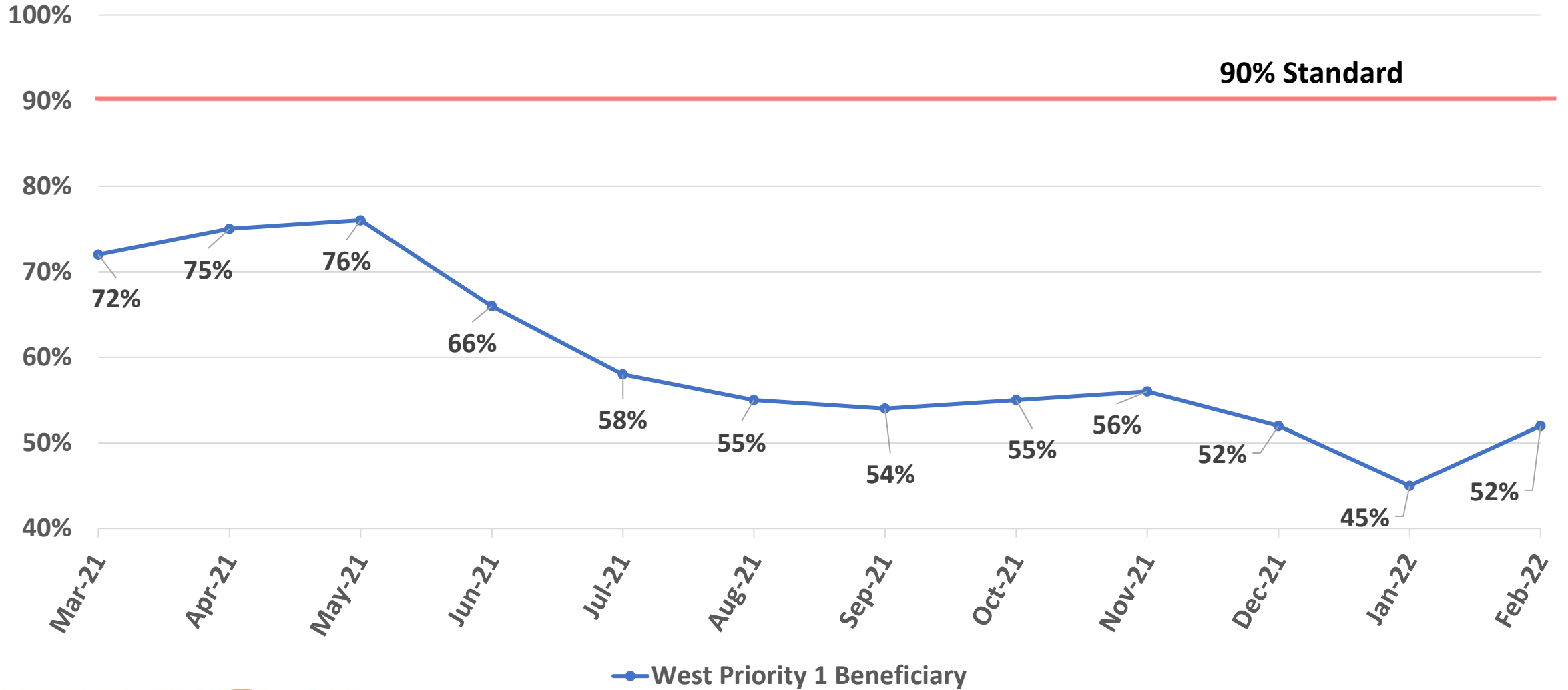


— East Priority 1 Beneficiary



“To serve our communities’ pre-hospital needs through value-driven, compassionate, and clinically superior care.”

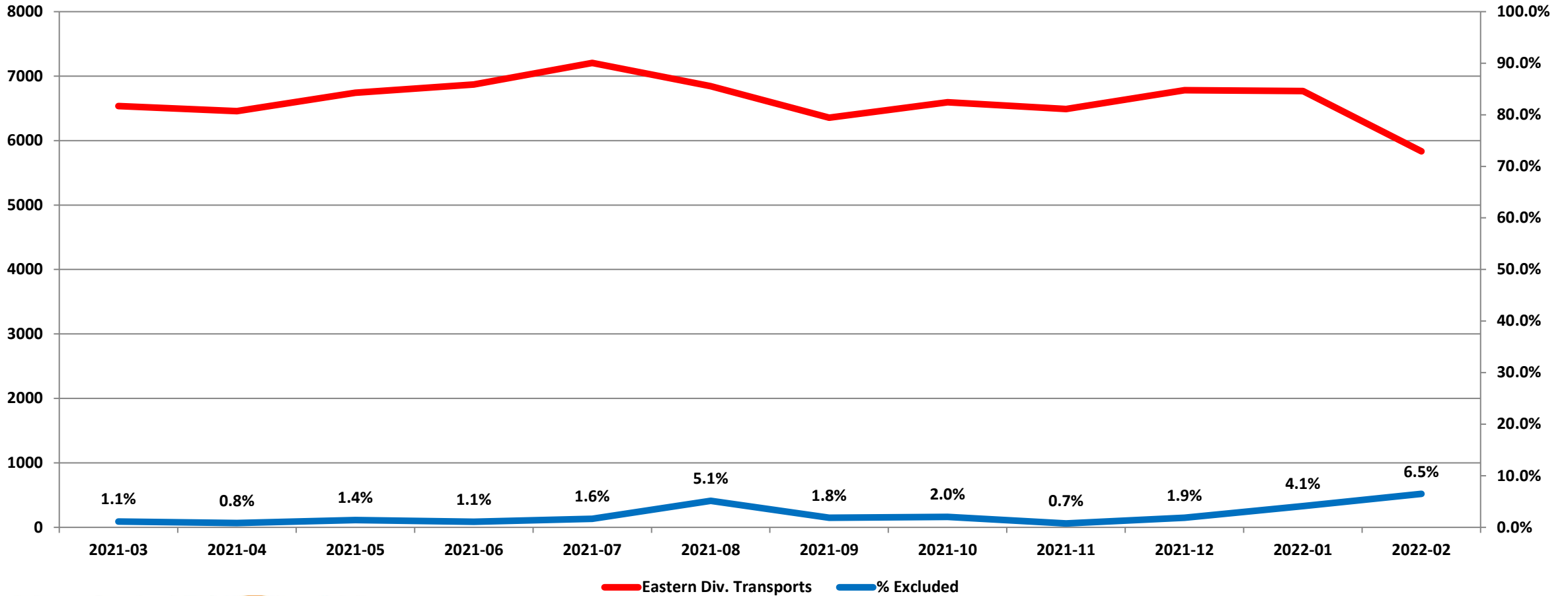
West Beneficiary Response Time Compliance



“To serve our communities’ pre-hospital needs through value-driven, compassionate, and clinically superior care.”

Exclusions

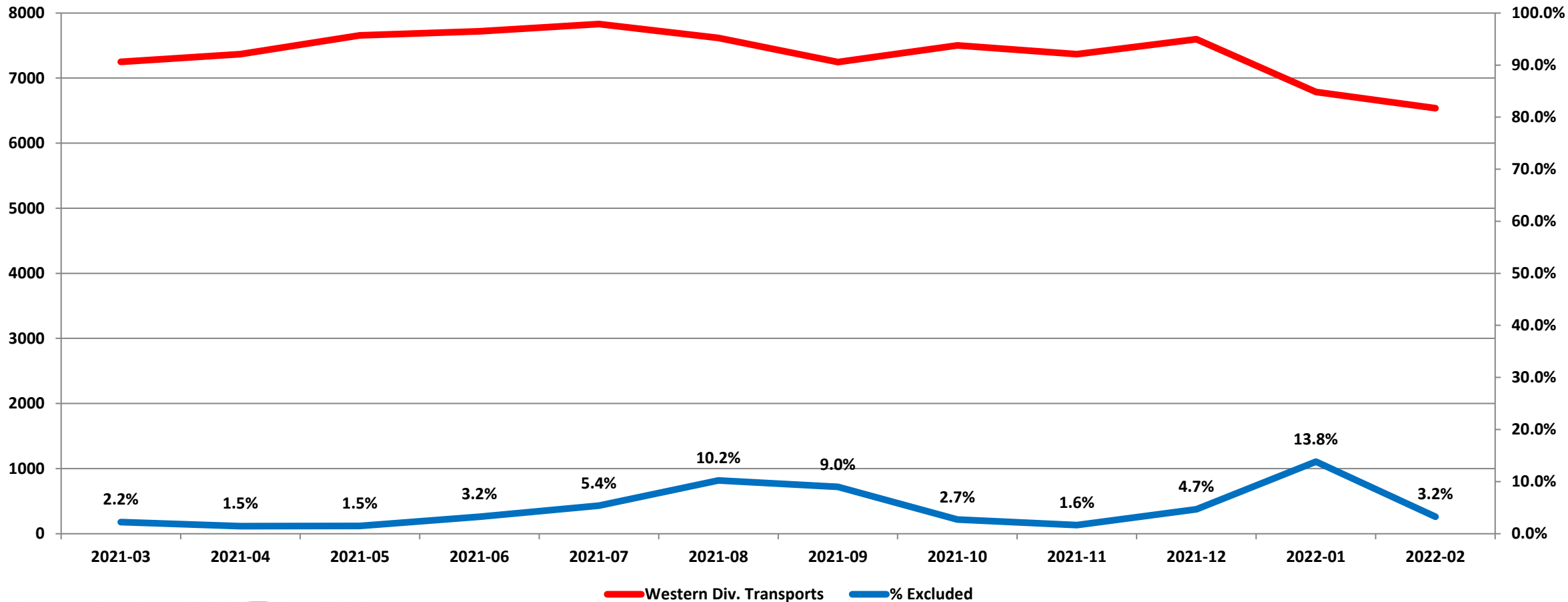
Eastern Division Response Time Exclusions Twelve Months ending February, 2022



“To serve our communities’ pre-hospital needs through value-driven, compassionate, and clinically superior care.”

Exclusions

Western Division Response Time Exclusions Twelve Months ending February, 2022



“To serve our communities’ pre-hospital needs through value-driven, compassionate, and clinically superior care.”