



- Electrical Repair and Generator Install (nearing completion)
- Roof Replacement/Repairs (complete)
- Flooring (carpet, LVT, tile) (starting soon)
- Water damage remediation (nearly complete)
- Access control/Low Voltage
- Owner Oversight
- Truck Wash (in partnership with City of OKC)



- As Built Drawings
- Architectural Design
- Interior Finishes
- Necessary Civil Engineering
- Interface with City of OKC Development (permitting)
- Architect oversight of remodel/construction



- Construction management
- Site safety
- Bidding of all projects as per Public Competitive Bidding Act at 61 O.S. Section 101 and Public Trusts Bidding Law at 60 O.S. Section 176(I)
- Oversight of all subcontractors
- Manage timelines



**“To serve our communities’ pre-hospital needs through value-driven, compassionate, and clinically superior care.”**

# EMSA

## OFFICE RENOVATIONS- EAST & WEST 6205 S. SOONER RD., OKLAHOMA CITY OK 73135

### LEGAL DESCRIPTION

A PART OF SECTION TWENTY-NINE (29), TOWNSHIP ELEVEN (11) NORTH, RANGE TWO (2) WEST OF THE INDIAN MERIDIAN, OKLAHOMA COUNTY, OKLAHOMA, MORE PARTICULARLY DESCRIBED AS FOLLOWS:

BEGINNING AT POINT 828.80 FEET SOUTH OF AND 33.00 FEET SOUTH 89°57' 40" WEST OF THE NORTHEAST CORNER OF SECTION 29, TOWNSHIP 11 NORTH, RANGE 2 WEST OF THE 1.M.;

THENCE SOUTH AND PARALLEL WITH THE EAST LINE OF SAID SECTION 29, A DISTANCE OF 348.68 FEET;

THENCE SOUTH 89°57'40" WEST AND PARALLEL WITH THE NORTH LINE OF SAID SECTION 29, A DISTANCE OF 624.55 FEET;

THENCE NORTH 00°02'02" WEST A DISTANCE OF 348.68 FEET;

THENCE NORTH 89°57'40" EAST AND PARALLEL WITH THE NORTH LINE OF SAID SECTION 29, A DISTANCE OF 624.76 FEET TO THE POINT OR PLACE OF BEGINNING.

### ARCHITECT

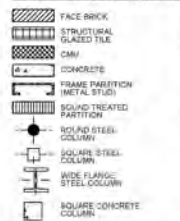
Kerr 3 Architects, Inc.  
507 S. Coltrane Rd. Suite G  
Edmond, Ok 73034  
Tel (405) 341-6546  
Fax (405) 341-6702  
www.kerr3.com

### CONSTRUCTION MANAGER

Red Sky Constructors  
507 S. Coltrane Rd. Suite G  
Edmond, Ok 73034  
Tel (405) 341-6546  
Fax (405) 341-6702  
www.kerr3.com

### MATERIALS LEGEND

#### FOR PLANS AND DETAILS

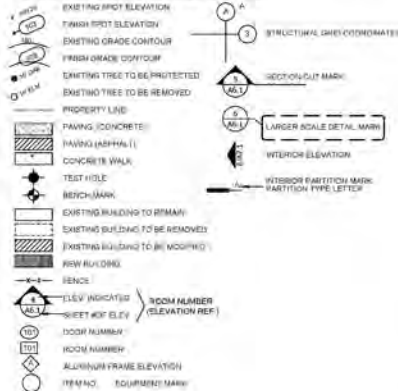


NOTE: ABOVE MATERIAL INDICATIONS ARE STANDARD AND ARE NOT INTENDED AS A LISTING OF MATERIALS ON THE JOB.

#### FOR DETAILS



### SYMBOLS LEGEND



### ABBREVIATIONS

A.F.F.	ABOVE FINISHED FLOOR	F.E.C.	FIRE EXTINGUISHER CABINET	MEJ	MASONRY EXPANSION JOINT
ADJ	ADJUSTABLE	F.H.C.	FIRE HOSE CABINET	MIN	MINIMUM
ALUM	ALUMINUM	FINISH FLOOR	FINISH FLOOR	MISC	MISCELLANEOUS
APPROX / APP.	APPROXIMATELY	E	FLOW LINE	MTL	METAL
BRG	BEARING	G.I.	GALVANIZED IRON	N.I.C.	NOT IN CONTRACT
B.B.	BENCH MARK	GA	GAUGE	N.T.S.	NOT TO SCALE
BTM	BOTTOM	GYP. BD.	GYP. BOARD	REF. RE.	REFER
BLDG	BUILDING	HD	HEAD	REIN.F.	REINFORCING
C	CENTERLINE	HDOP / HC	HANDICAPPED	REO.D.	REQUIRED
CLG	CEILING	HDWR	HARDWARE	R.I.	ROUGH IN
CMU	CONCRETE MASONRY UNIT	HT	HEIGHT	RM	ROOM
C.J.	CONTROL JOINT	HM	HOLLOW METAL	R	RADIUS OR RIBER
COL	COLUMN	HORIZ	HORIZONTAL	SIM	SIMILAR
CONC	CONCRETE	INSUL	INSULATION	S.C.	SEALED CONCRETE
CONT	CONTINUOUS	INT	INTERIOR	SJ	SCORED JOINT
DIA	DIAMETER	JST BRG	JOIST BEARING	S	SPECIFICATIONS
DIM	DIMENSION	JT	JOINT	SQ	SQUARE
D.F.	DRINKING FOUNTAIN	LAM	LAMINATE	S/S	STAINLESS STEEL
DN	DOWN	LAV	LAVATORY	STL	STEEL
D.S.	DOWN SPOUT	NO.	NUMBER	STL JST	STEEL JOIST
DTL	DETAIL	O.C.	ON CENTER	STRUCT	STRUCTURAL
ELEC	ELECTRICAL	O.P.N.G.	OPENING	T.O.C.	TOP OF CURB
E.W.C.	ELECTRIC WATER COOLER	OPP.	OPPOSITE	T.O.M.	TOP OF MASONRY
ELEV	ELEVATION	PL	PLATE	T.O.S.	TOP OF STEEL
EQ	EQUAL	PLM	PLASTIC LAMINATE	T.O.W.	TOP OF WALL TREAD
EXIST	EXISTING	PLYWD	PLYWOOD	TYP	TYPICAL
E.J.	EXPANSION JOINT	MFR	MANUFACTURER	VERT	VERTICAL
EXT	EXTERIOR	M.O.	MASONRY OPENING	VCT	VINYL COMPOSITION TILE WG
F.H.	FIRE HYDRANT	MATL	MATERIAL	WC	WATER CLOSET
F.E.	FIRE EXTINGUISHER	MAX	MAXIMUM	WD	WOOD
F.E.B.	FIRE EXTINGUISHER BRACKET	MECH	MECHANICAL		



S. SOONER RD.  
SITE PLAN  
SCALE: NOT TO SCALE

### SHEET INDEX

GENERAL  
A0.1 COVER SHEET

### ARCHITECTURAL

A0.1 DEMOLITION PLAN  
A0.2 OVERALL FLOOR PLAN  
A0.3 FLOOR PLAN EAST BUILDING (EAST)  
A0.4 FLOOR PLAN EAST BUILDING (WEST)  
A0.5 FLOOR PLAN EAST BUILDING (2ND FLOOR)  
A0.6 FLOOR PLAN WEST BUILDING  
A0.7 ENLARGED PLANS  
A0.8 FINISH SCHEDULES  
A0.9 INTERIOR ELEVATIONS

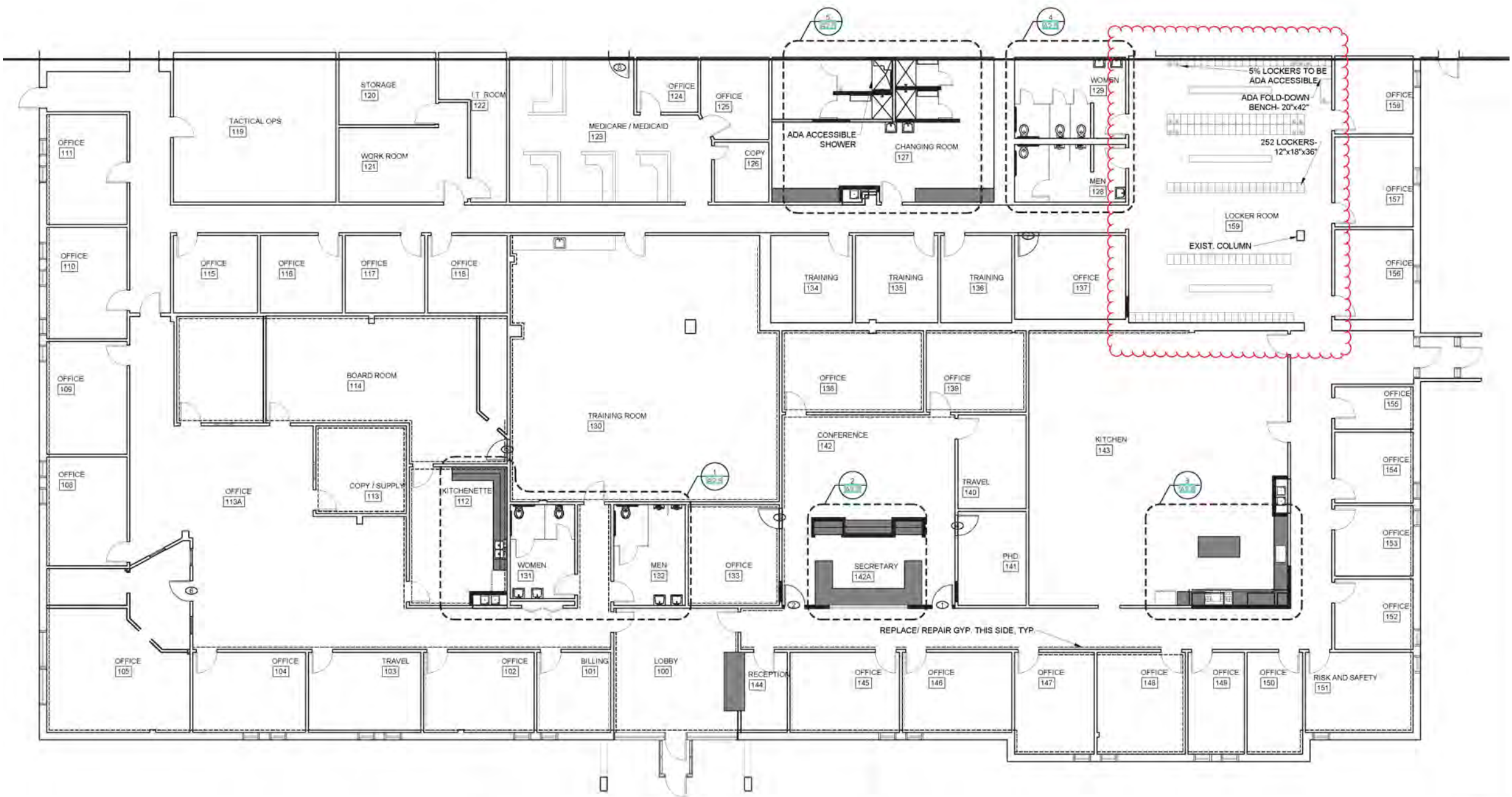
KERR 3 ARCHITECTS, INC.  
507 S. Coltrane Rd. Suite G  
Edmond, Oklahoma 73034  
Tel: 405.341.6546  
Fax: 405.341.6702  
www.kerr3.com  
Copyright © 2011 Kerr 3 Architects, Inc.



EMSA  
OFFICE RENOVATIONS  
6205 S. SOONER RD.  
OKLAHOMA CITY, OK 73135

6/11/2021

SHEET  
A0.1



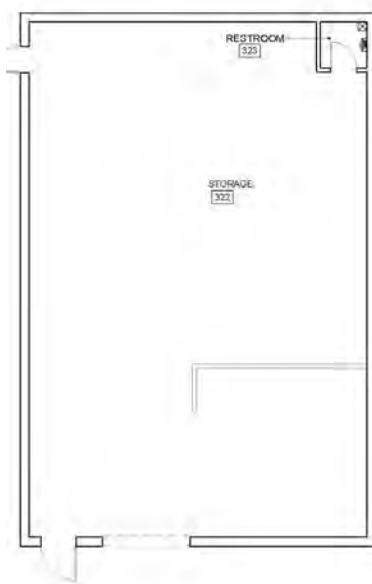
EQUIPMENT SCH

LOCKERS: SCR/

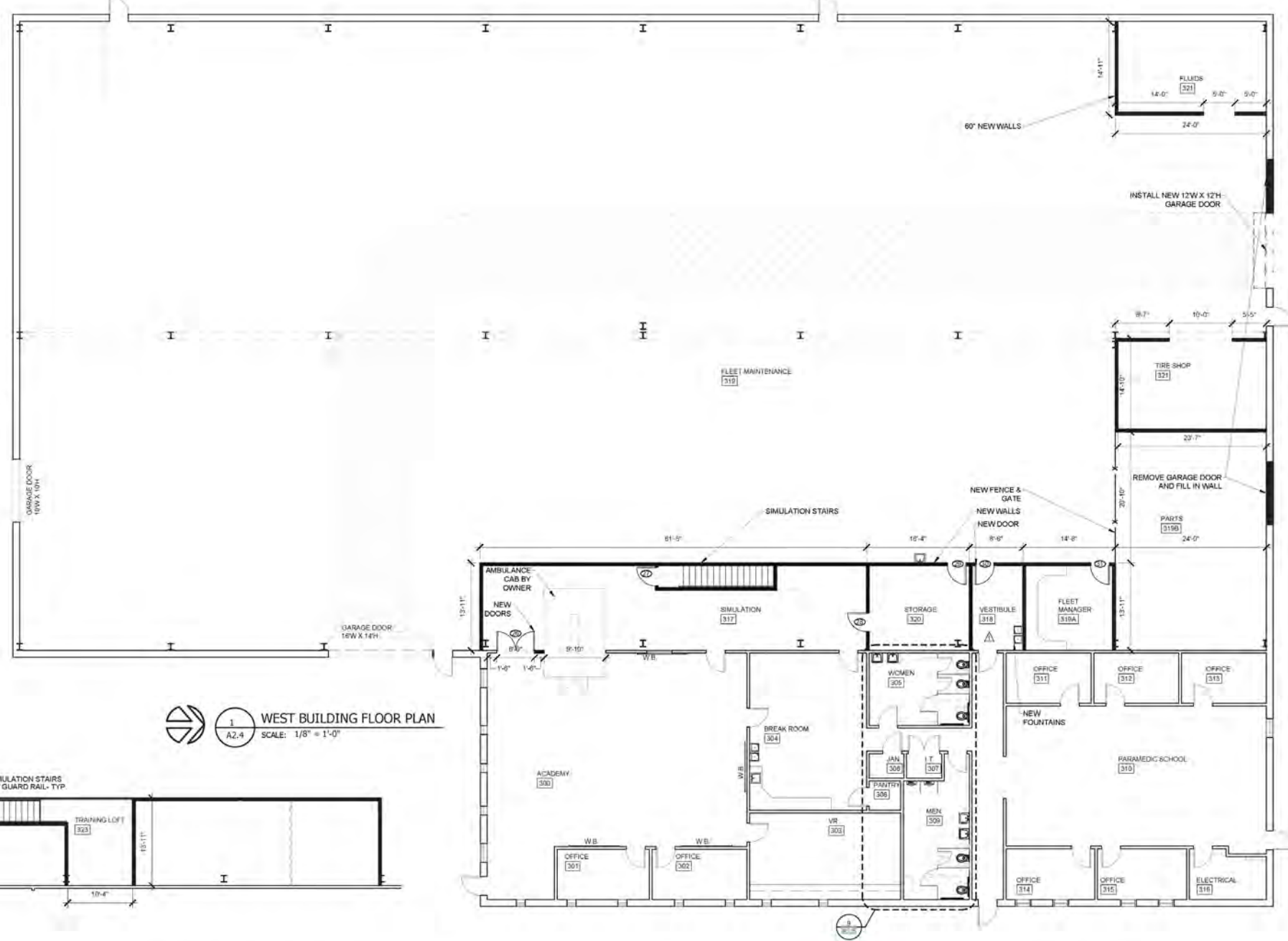
2 TIE

BENCHES: SCR/

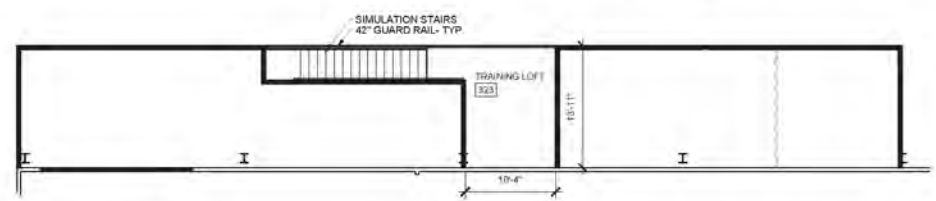




- DESIGN NOTES**
1. COMPRESSED AIR @ W. WALL
  2. TIRE AREA (EXISTING = 19' X 22')
  3. 220V WELDER @ W. WALL
  4. AREA FOR OIL
    - a. 4 55g DRUMS
    - b. 6 X 12 OLD FILTERS
    - c. 6 X 12 USED OIL
  5. PROPANE FORK LIFT
  6. EACH SERVICE BAY TO HAVE OIL, AIR, DEF.



**1 WEST BUILDING FLOOR PLAN**  
SCALE: 1/8" = 1'-0"



**2 WEST BUILDING TRAINING LOFT**  
SCALE: 1/8" = 1'-0"

- SCOPE OF WORK NOTES**
1. NO WORK TO BUILDING EXTERIOR.
  2. NO SITE WORK.
  3. BUILDINGS ARE EQUIPPED WITH AN AUTOMATIC FIRE SPRINKLER SYSTEM.
  4. ALL WORK SHALL CONFORM TO THE APPLICABLE ADOPTED BUILDING CODES.

- NOTES**
1. STEEL COLUMNS RELATED TO EXISTING CRANES ARE NOT SHOWN.
  2. NEW STUD WALLS TO HAVE SOUND BATT'S FULL DEPTH U.N.O.

- LEGEND**
- NEW WALL: 5/8" TYPE X 0.6 ON EACH SIDE OF 3 5/8" METAL STUD @ 16" O.C. EXTEND WALL ASSEMBLY TO STRUCTURAL DECK.

# 800kw Main Building Generator



# 600kw Fleet/Education Building Generator

