

Operational Compliance Report

January 2022

Frank Gresh

Interim Chief Operating Officer



“To serve our communities’ pre-hospital needs through value-driven, compassionate, and clinically superior care.”

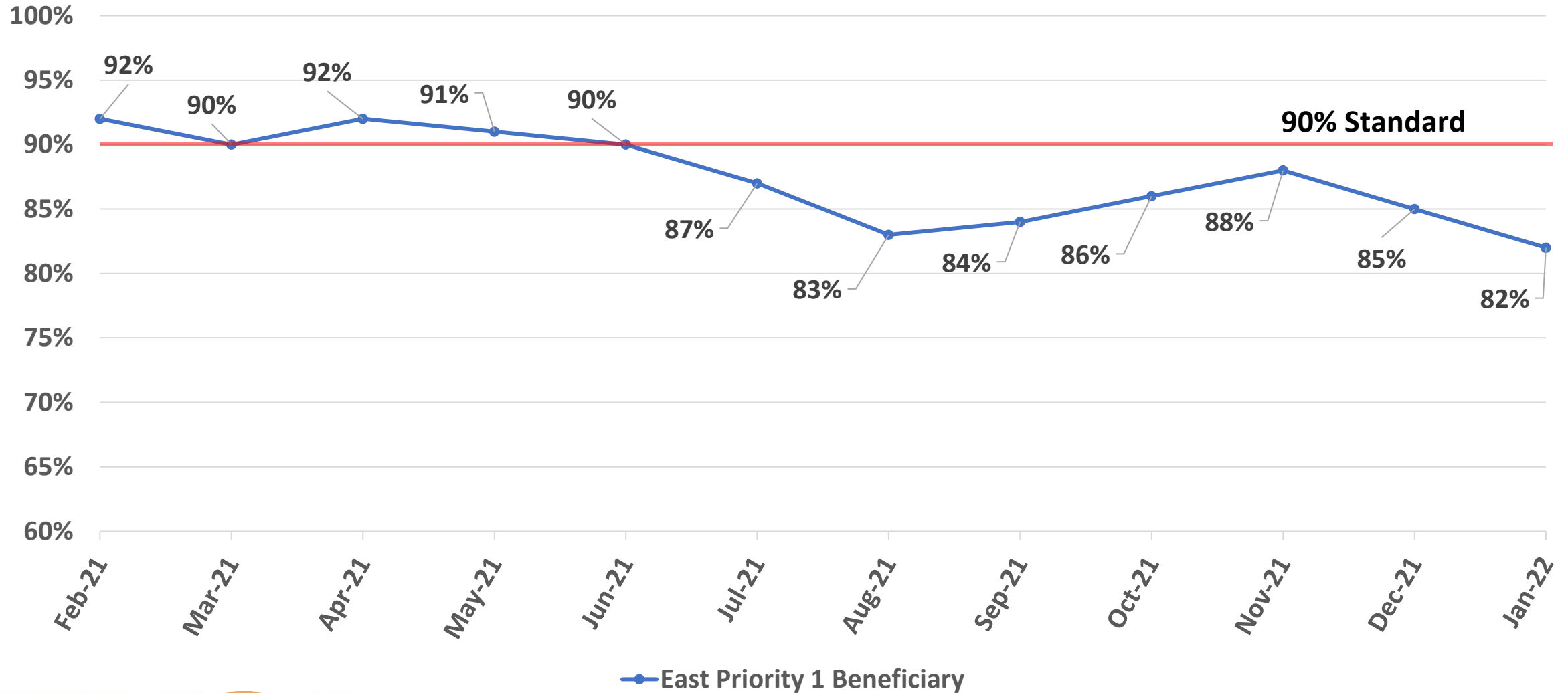
January 2022 Compliance Summary – Combined

	Priority 1	Priority 2	Priority 3	Priority 4
East Ben. Total	82%	84%	45%	55%
East NB Total	Priority 1&2	64%	0%	N/A
West Ben. Total	45%	59%	46%	28%
West NB Total	Priority 1&2	37%	25%	N/A



“To serve our communities’ pre-hospital needs through value-driven, compassionate, and clinically superior care.”

East Beneficiary Response Time Compliance

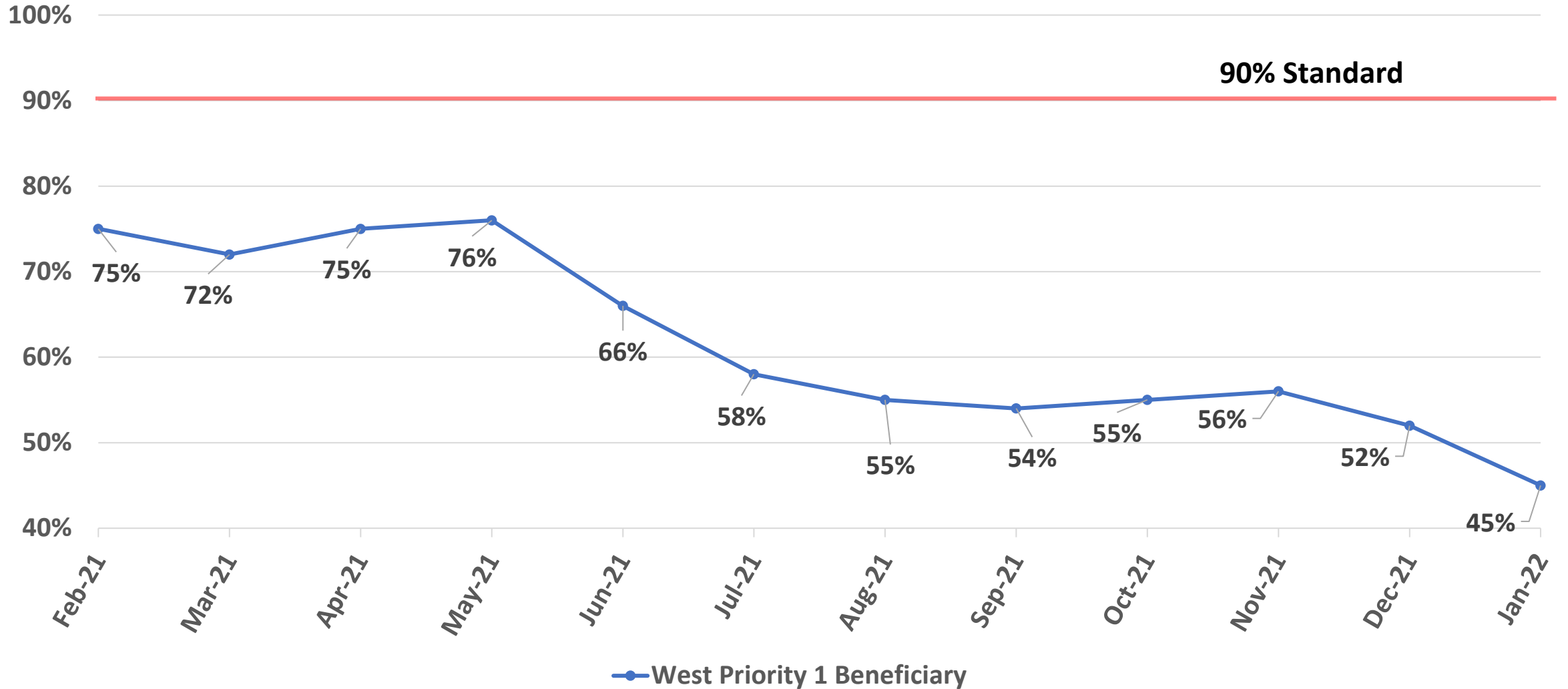


— East Priority 1 Beneficiary



“To serve our communities’ pre-hospital needs through value-driven, compassionate, and clinically superior care.”

West Beneficiary Response Time Compliance



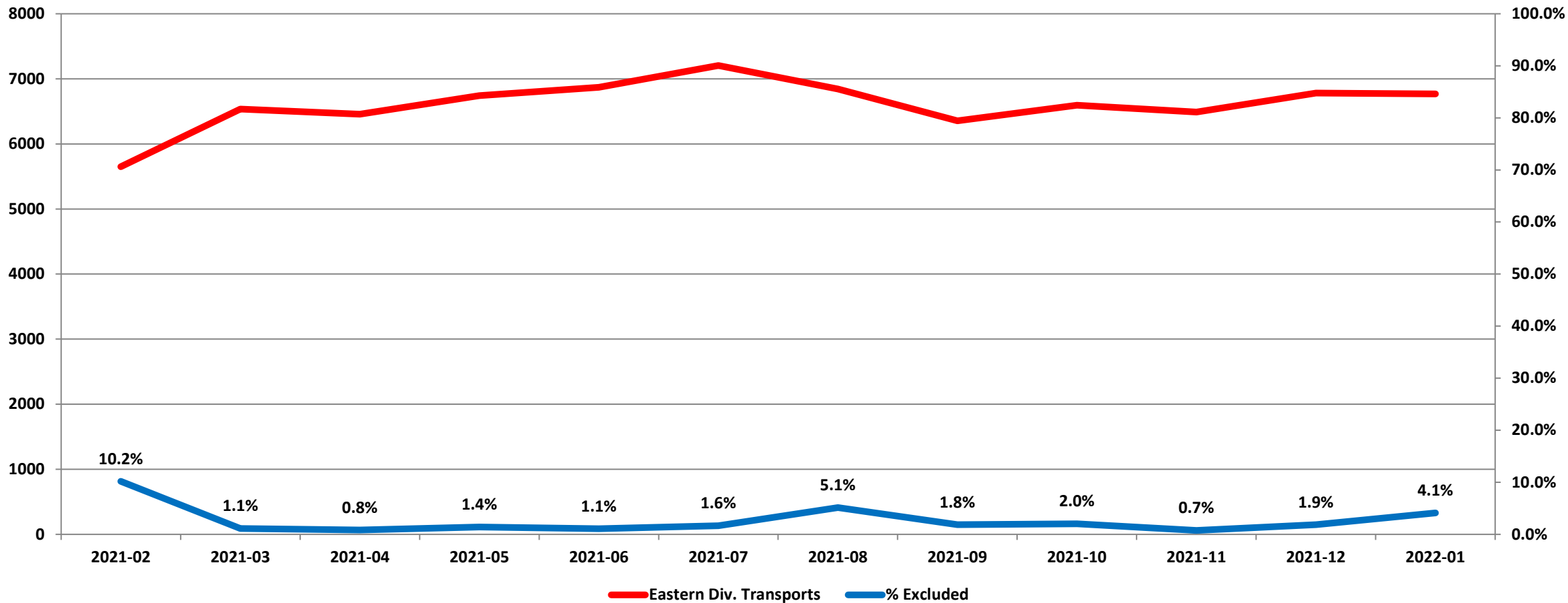
— West Priority 1 Beneficiary



“To serve our communities’ pre-hospital needs through value-driven, compassionate, and clinically superior care.”

Exclusions

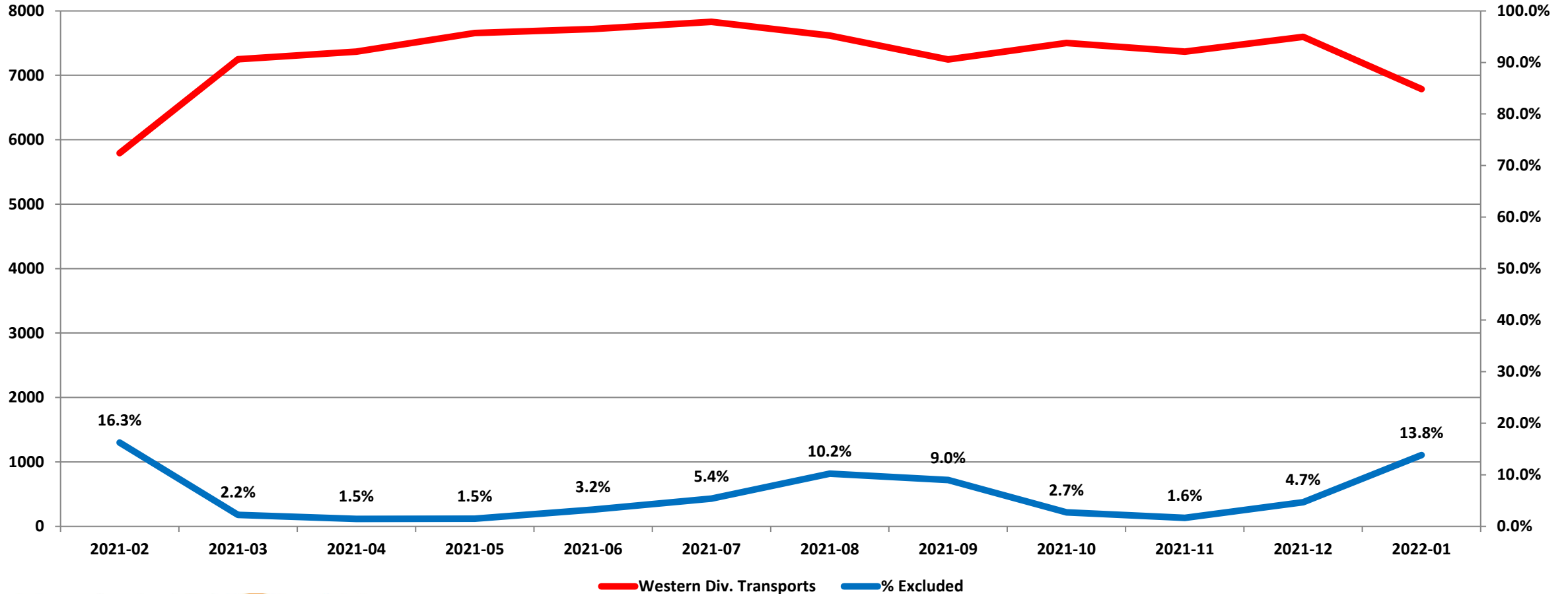
Eastern Division Response Time Exclusions Twelve Months ending January, 2022



“To serve our communities’ pre-hospital needs through value-driven, compassionate, and clinically superior care.”

Exclusions

Western Division Response Time Exclusions Twelve Months ending January, 2022



Western Div. Transports % Excluded



“To serve our communities’ pre-hospital needs through value-driven, compassionate, and clinically superior care.”