

Operational Compliance Report

January 2023

Frank Gresh

Interim Chief Operating Officer



“To serve our communities’ pre-hospital needs through value-driven, compassionate, and clinically superior care.”

January 2023 Compliance Summary – Combined

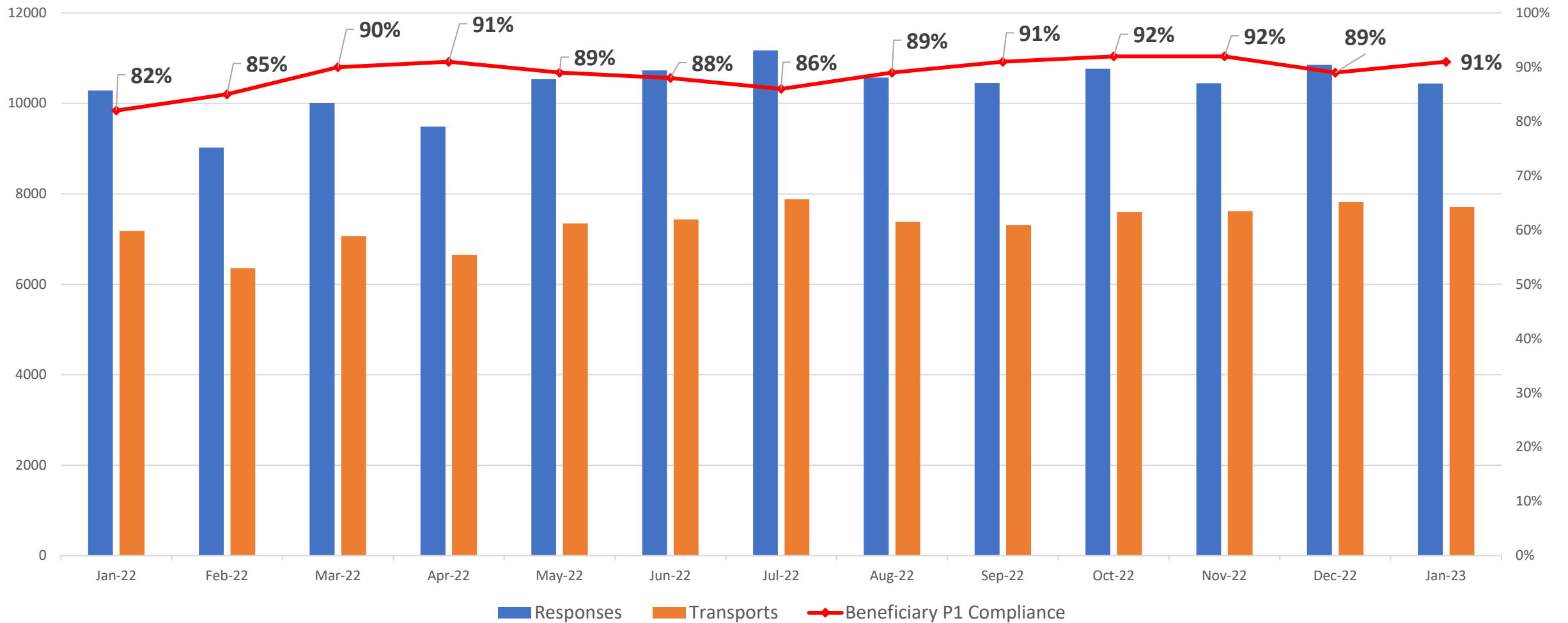
	Priority 1	Priority 2	Priority 3	Priority 4
East Ben. Total	91%	95%	84%	90%
East NB Total	Priority 1&2	85%	100%	N/A
West Ben. Total	83%	94%	84%	75%
West NB Total	74%	90%	78%	100%



“To serve our communities’ pre-hospital needs through value-driven, compassionate, and clinically superior care.”

P1 Compliance Trends – EASTERN DIVISION

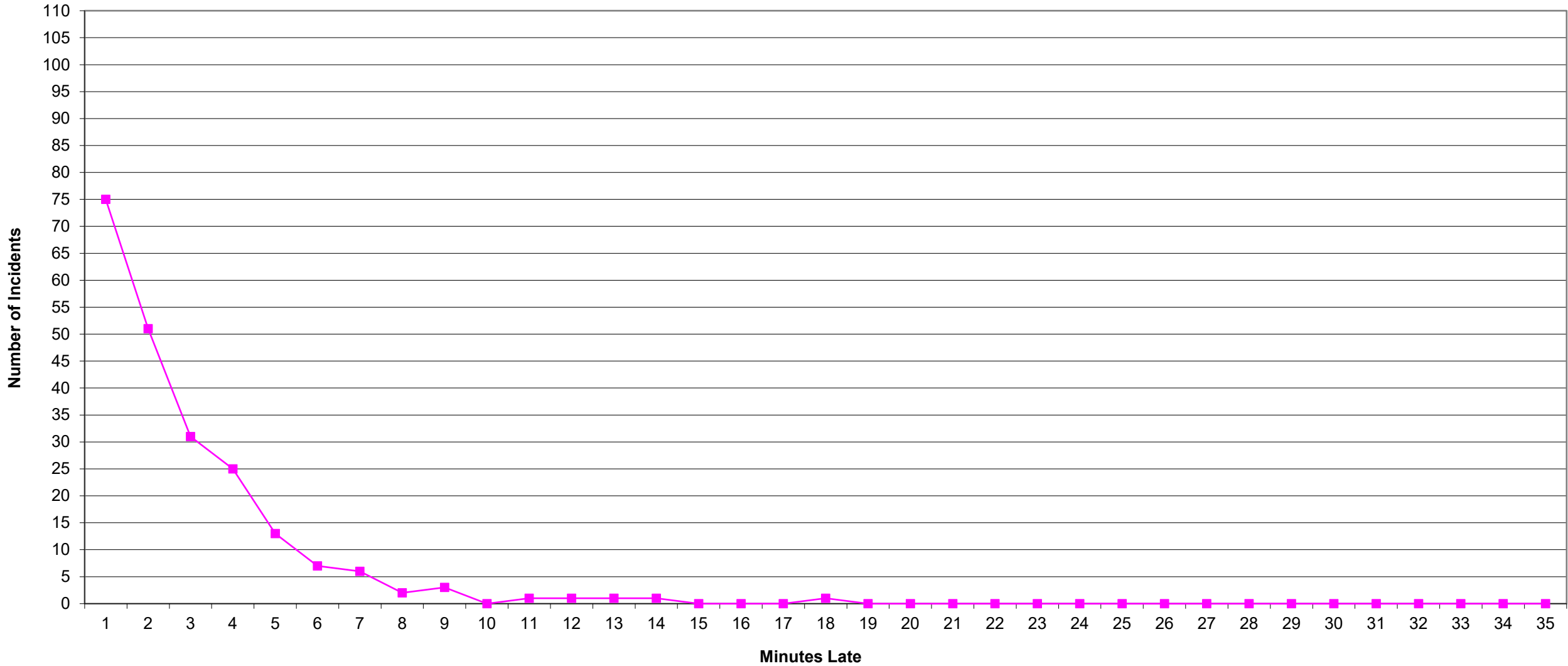
East Beneficiary Response Time Compliance with Response and Transport Totals



■ Responses ■ Transports ◆ Beneficiary P1 Compliance



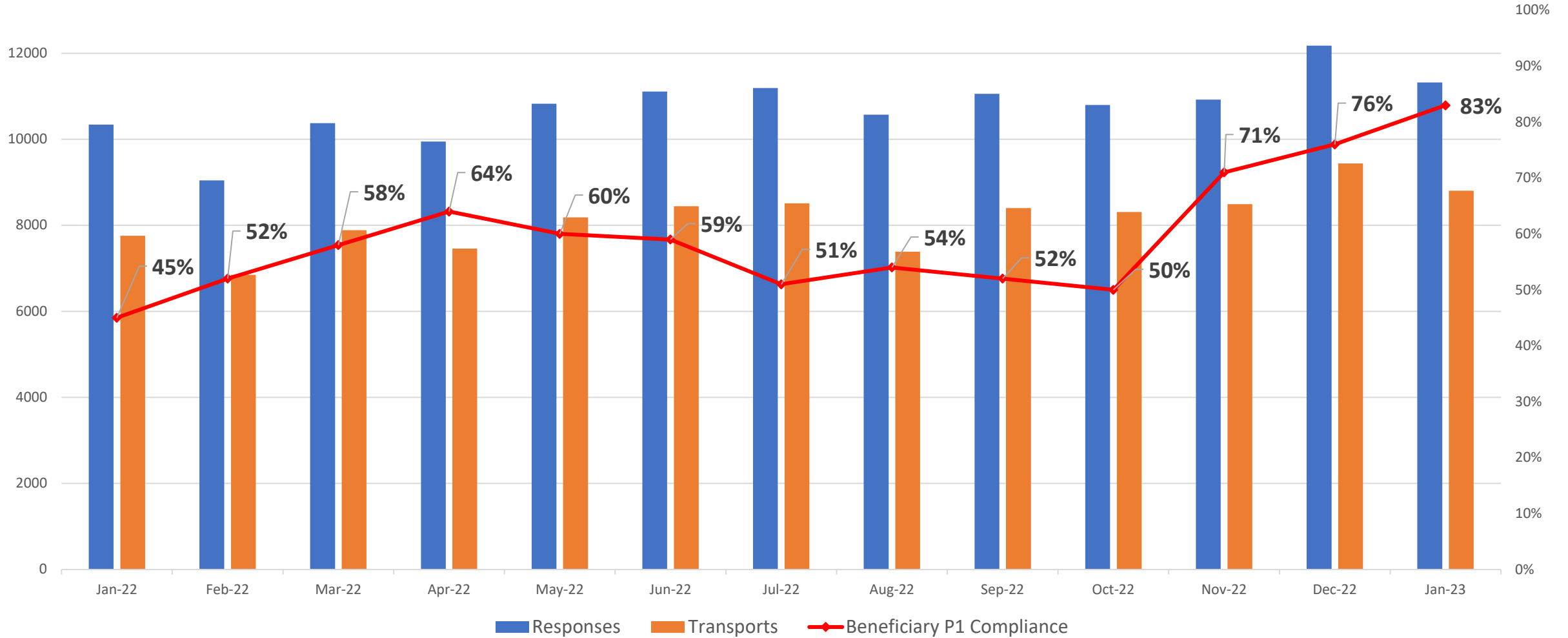
Eastern Division Priority 1 Late Calls January 2023



“To serve our communities’ pre-hospital needs through value-driven, compassionate, and clinically superior care.”

P1 Compliance Trends – WESTERN DIVISION

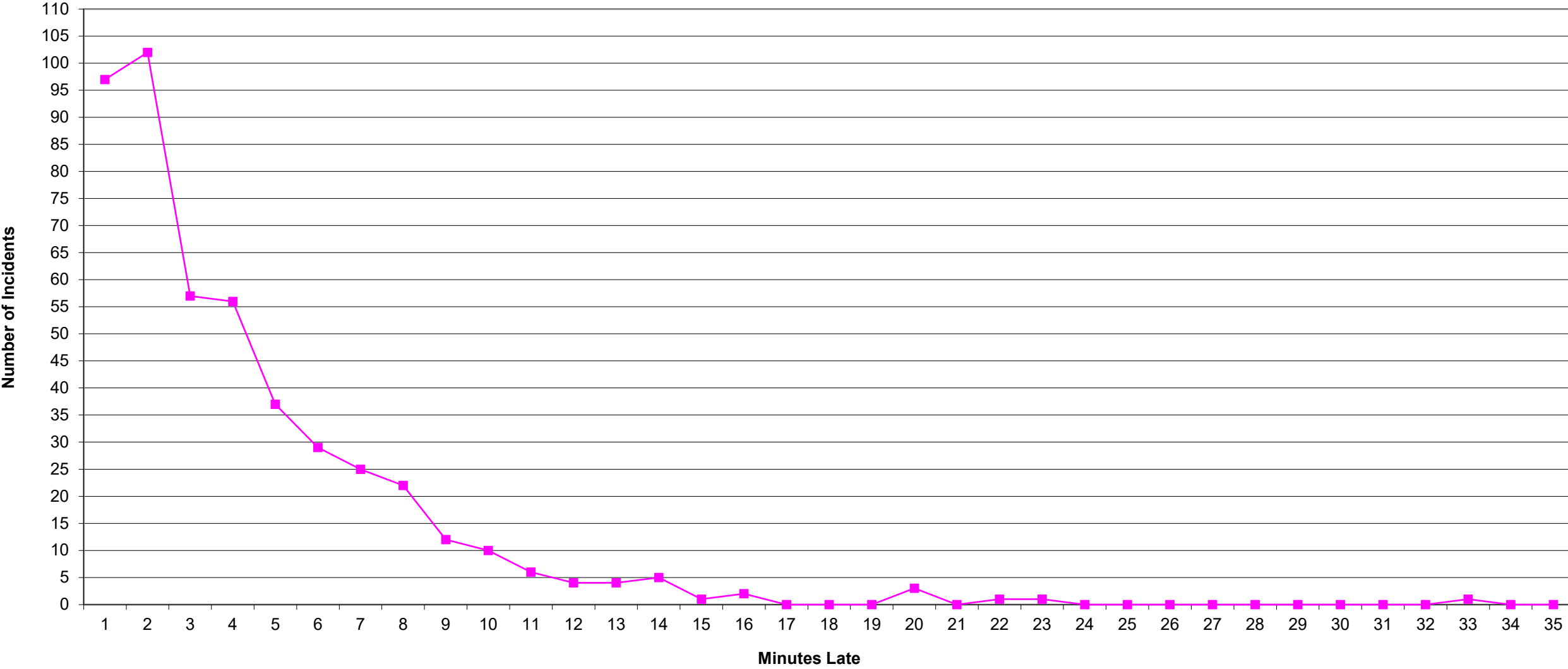
West Beneficiary Response Time Compliance with Response and Transport Totals



■ Responses ■ Transports ◆ Beneficiary P1 Compliance



**Western Division Priority 1 Late Calls
January 2023**

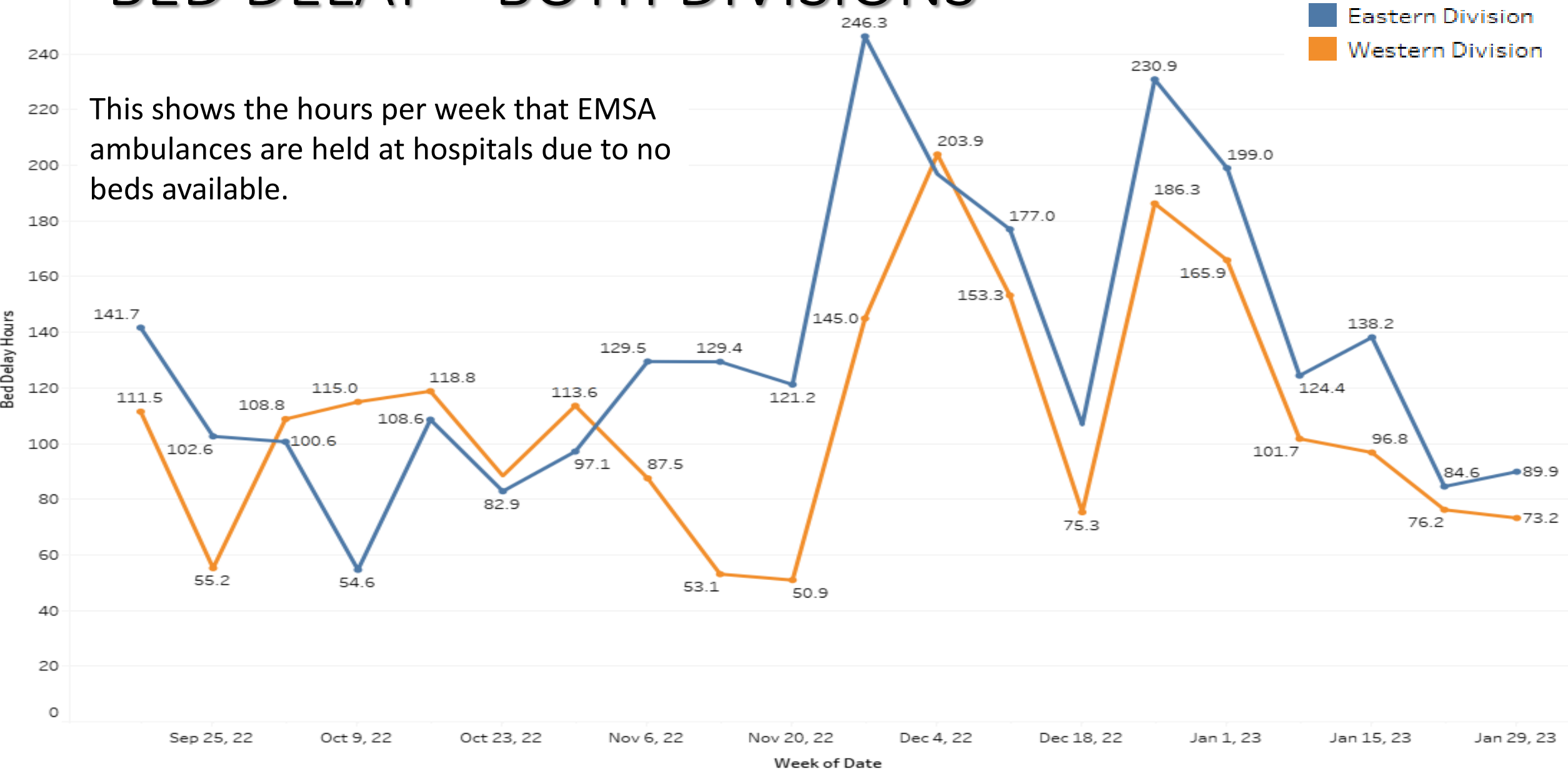


“To serve our communities’ pre-hospital needs through value-driven, compassionate, and clinically superior care.”

BED DELAY – BOTH DIVISIONS

This shows the hours per week that EMSA ambulances are held at hospitals due to no beds available.

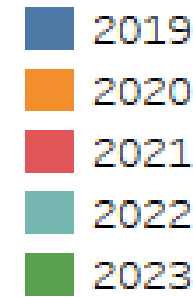
Division
■ Eastern Division
■ Western Division



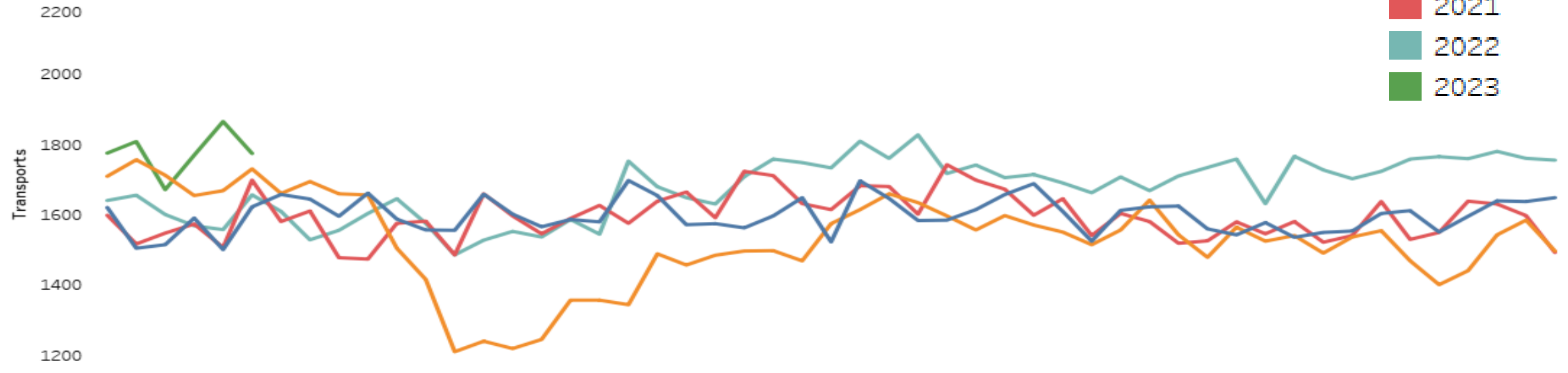
Year over Year Volume – Both Divisions

Division

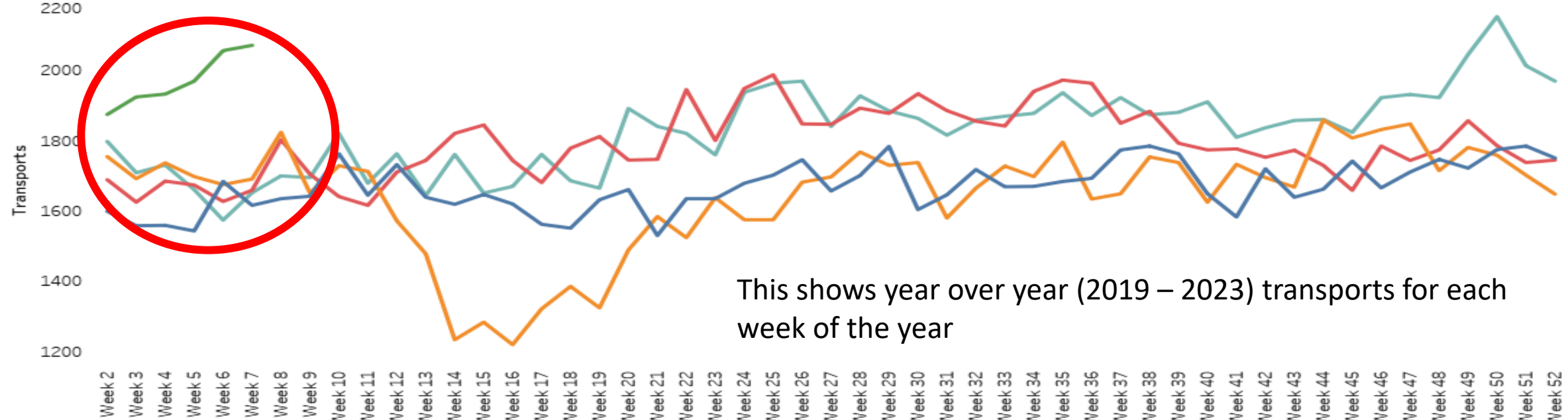
Time First Unit Assigned



Eastern Division



Western Division



This shows year over year (2019 – 2023) transports for each week of the year