

Operational Compliance Report

November 2022

Frank Gresh

Interim Chief Operating Officer



“To serve our communities’ pre-hospital needs through value-driven, compassionate, and clinically superior care.”

November 2022 Compliance Summary – Combined

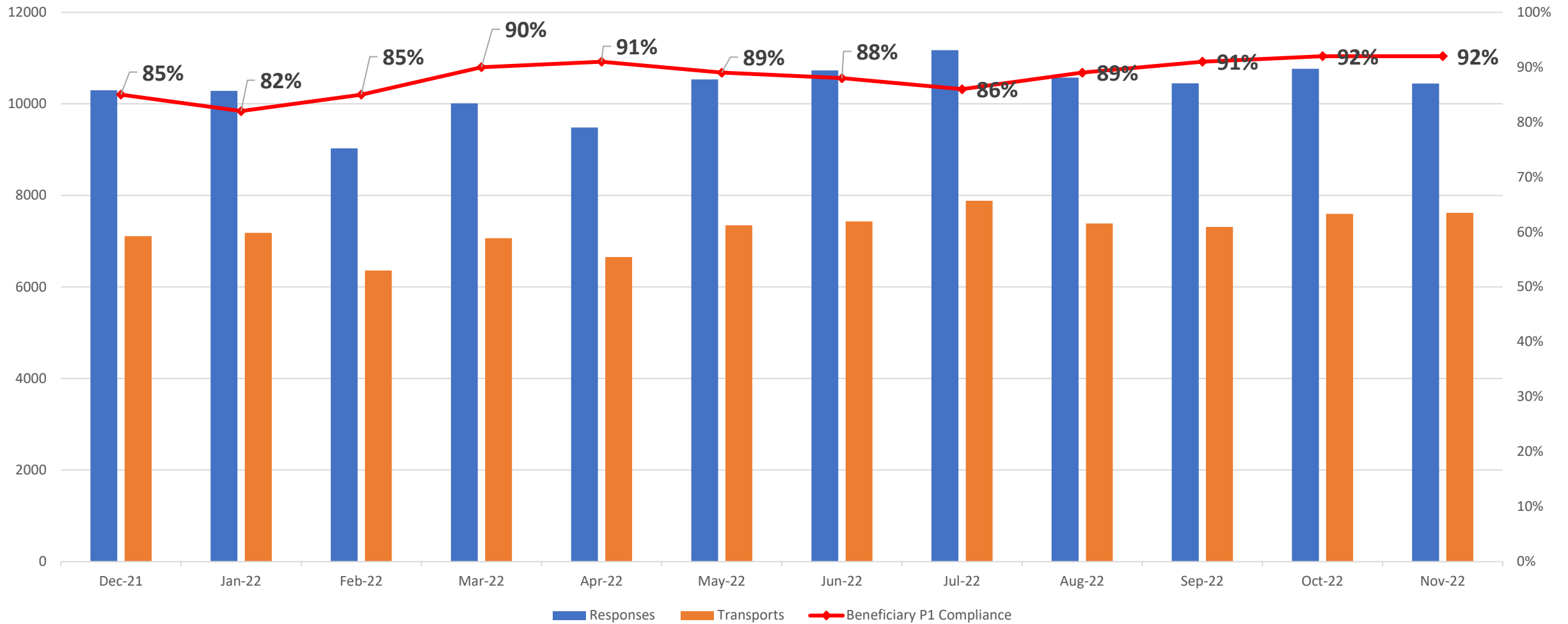
	Priority 1	Priority 2	Priority 3	Priority 4
East Ben. Total	92%	97%	77%	100%
East NB Total	Priority 1&2	85%	50%	N/A
West Ben. Total	71%	90%	83%	94%
West NB Total	Priority 1&2	80%	N/A	100%



“To serve our communities’ pre-hospital needs through value-driven, compassionate, and clinically superior care.”

P1 Compliance Trends – EASTERN DIVISION

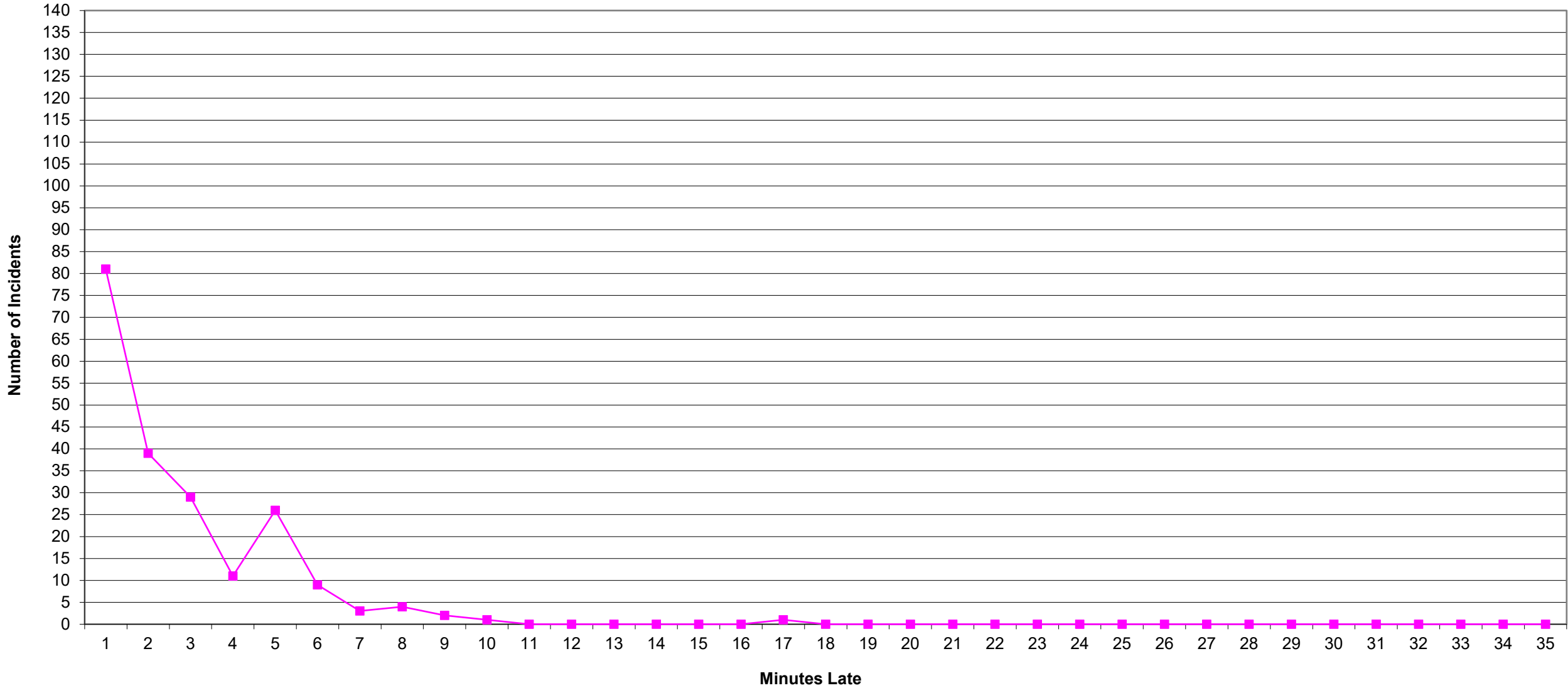
East Beneficiary Response Time Compliance with Response and Transport Totals



■ Responses ■ Transports ◆ Beneficiary P1 Compliance



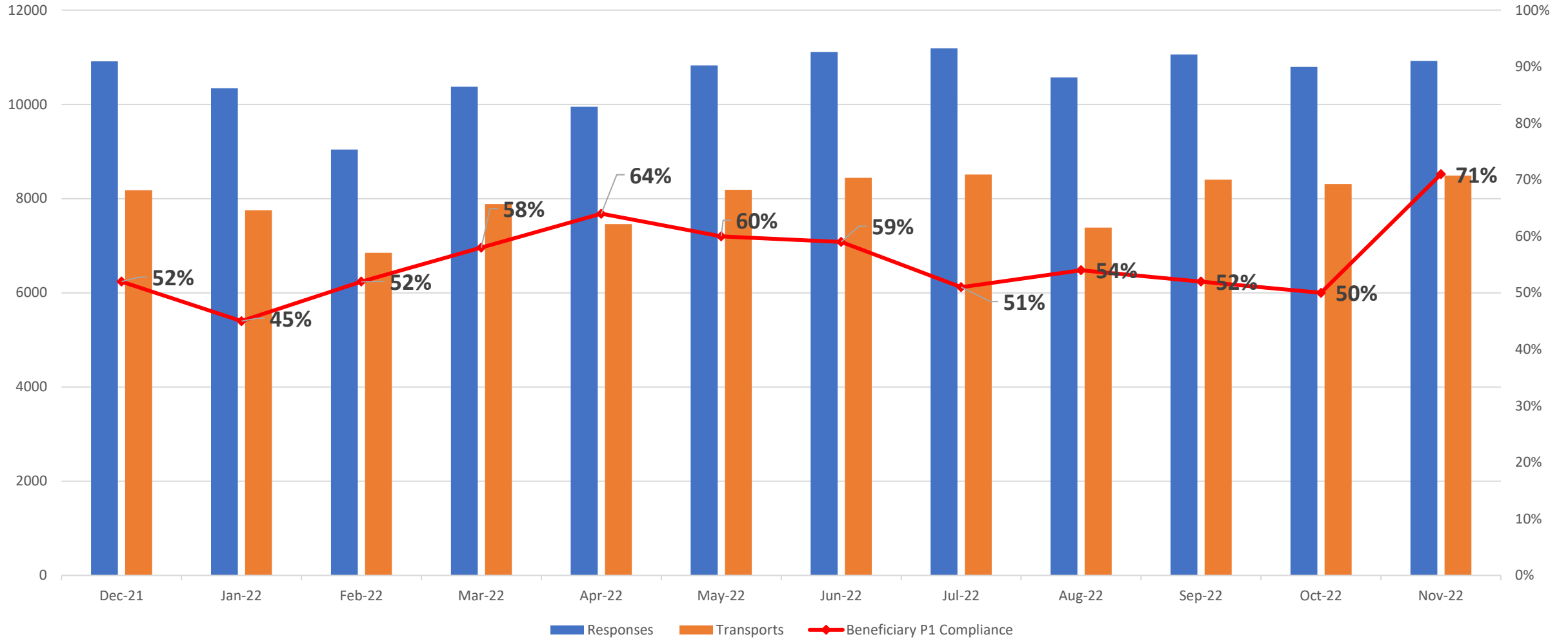
Eastern Division Priority 1 Late Calls November 2022



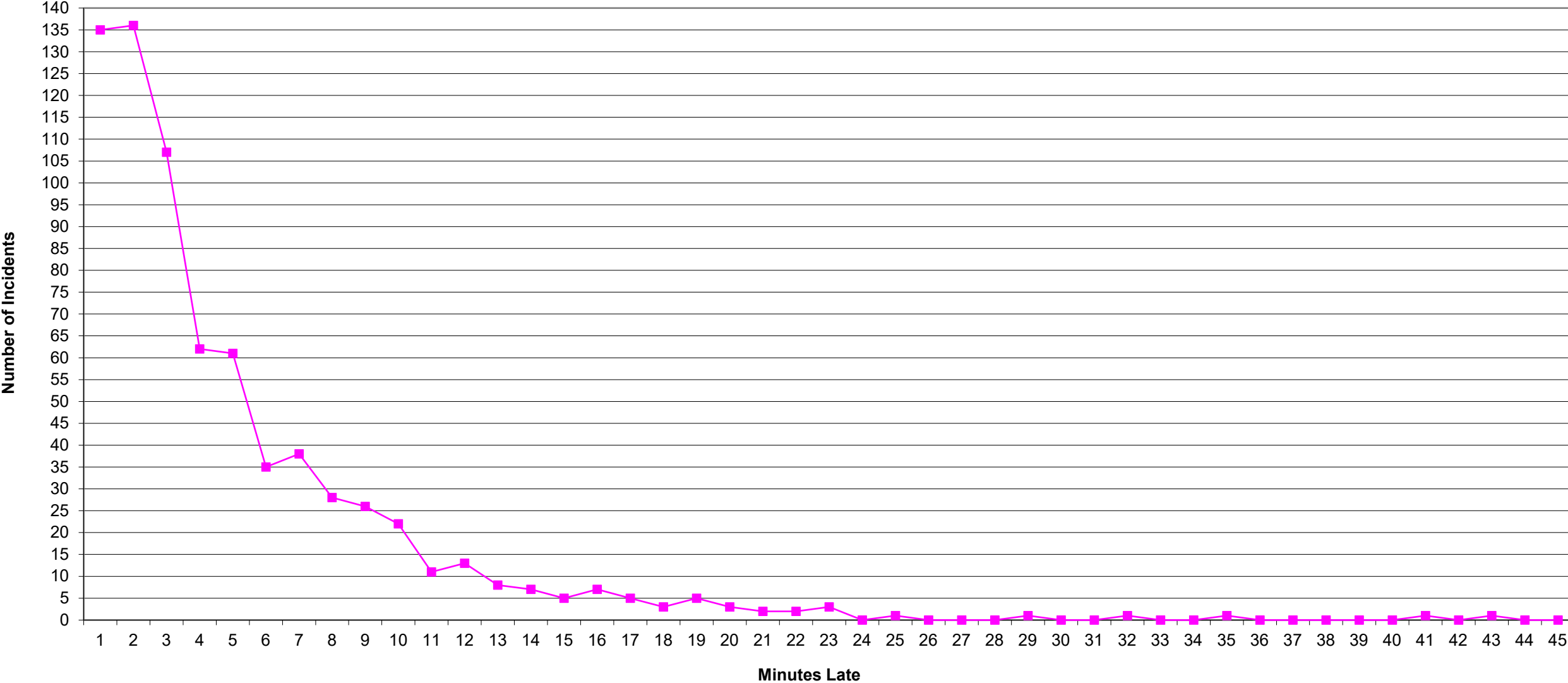
“To serve our communities’ pre-hospital needs through value-driven, compassionate, and clinically superior care.”

P1 Compliance Trends – WESTERN DIVISION

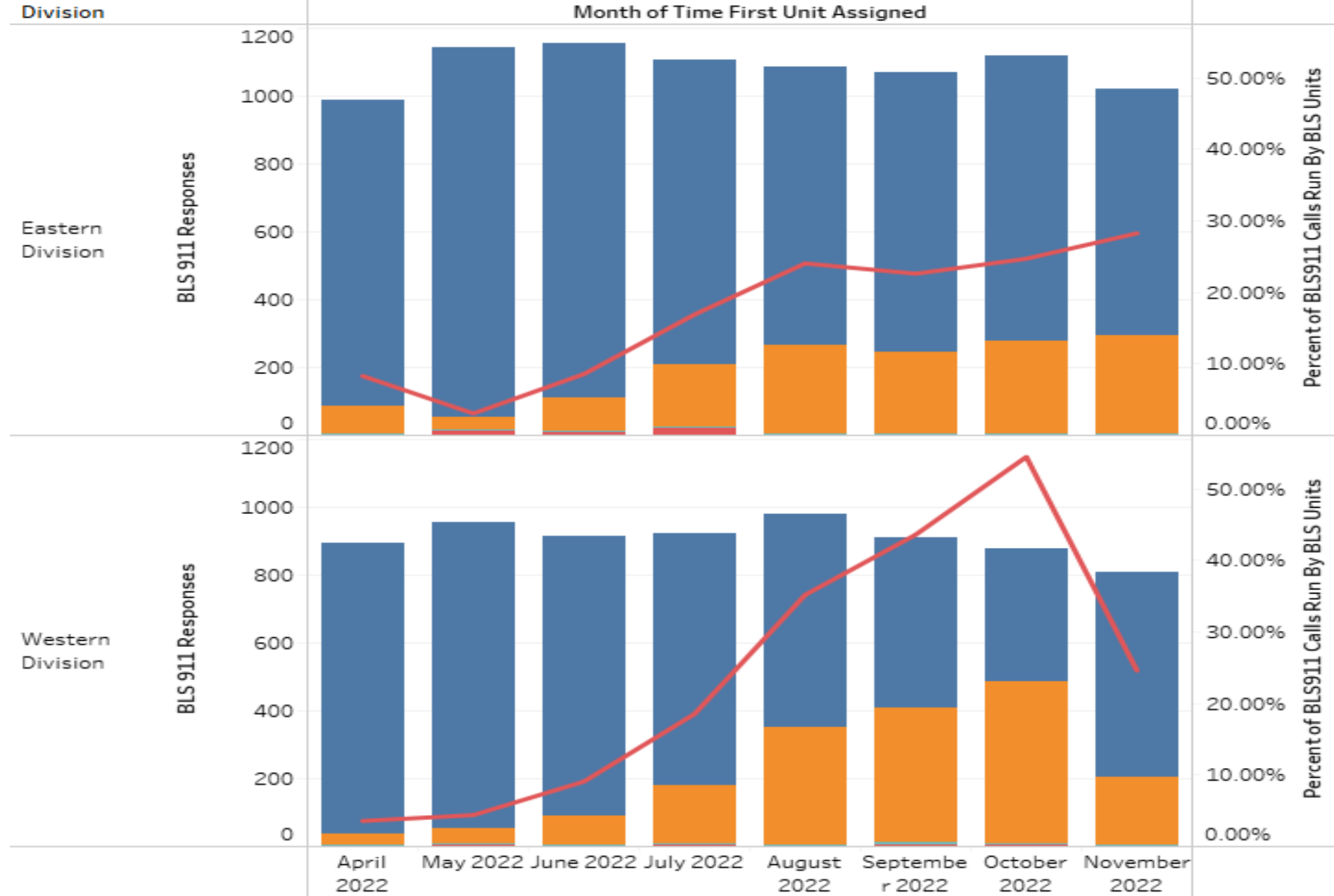
West Beneficiary Response Time Compliance with Response and Transport Totals

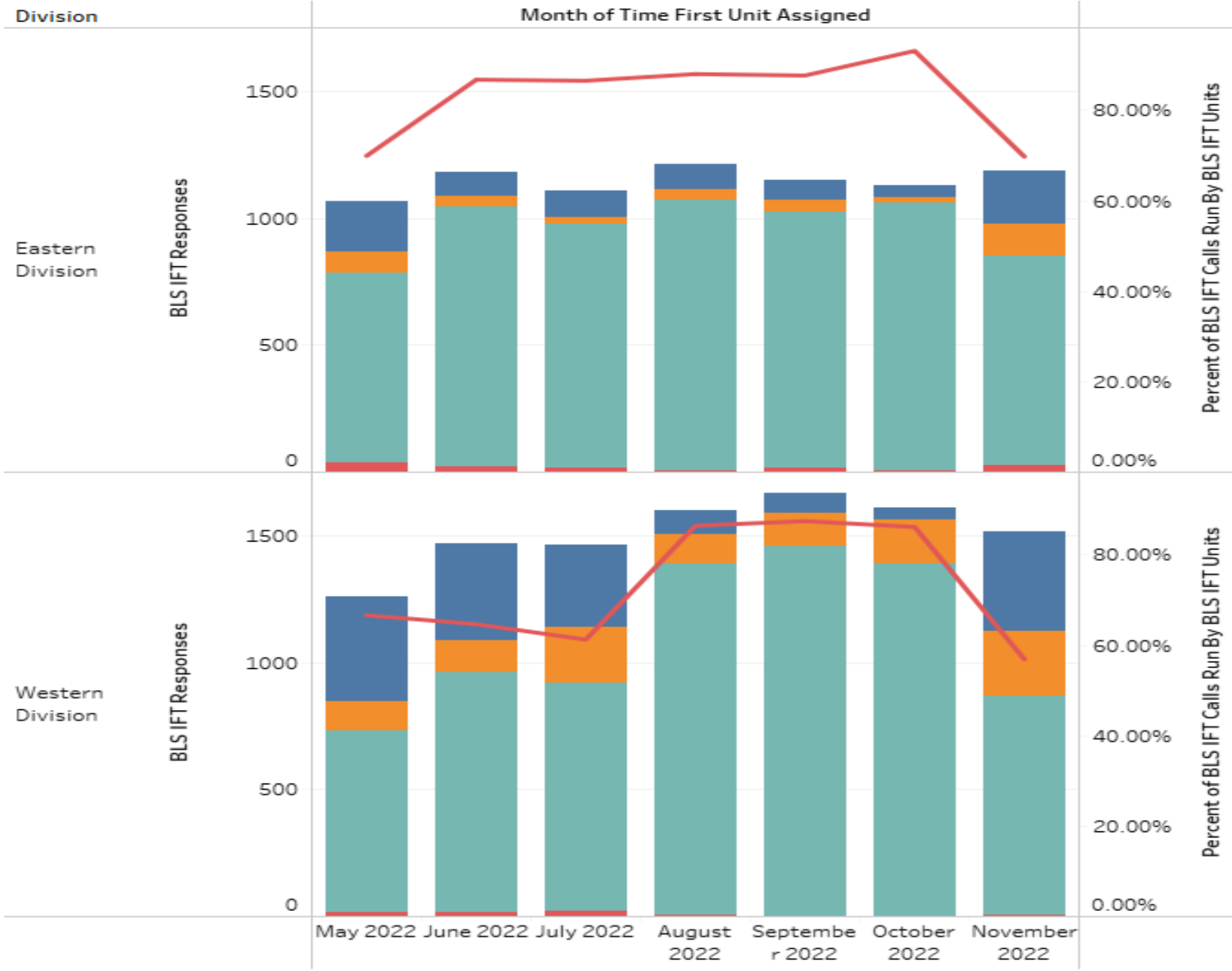


Western Division Priority 1 Late Calls
November 2022

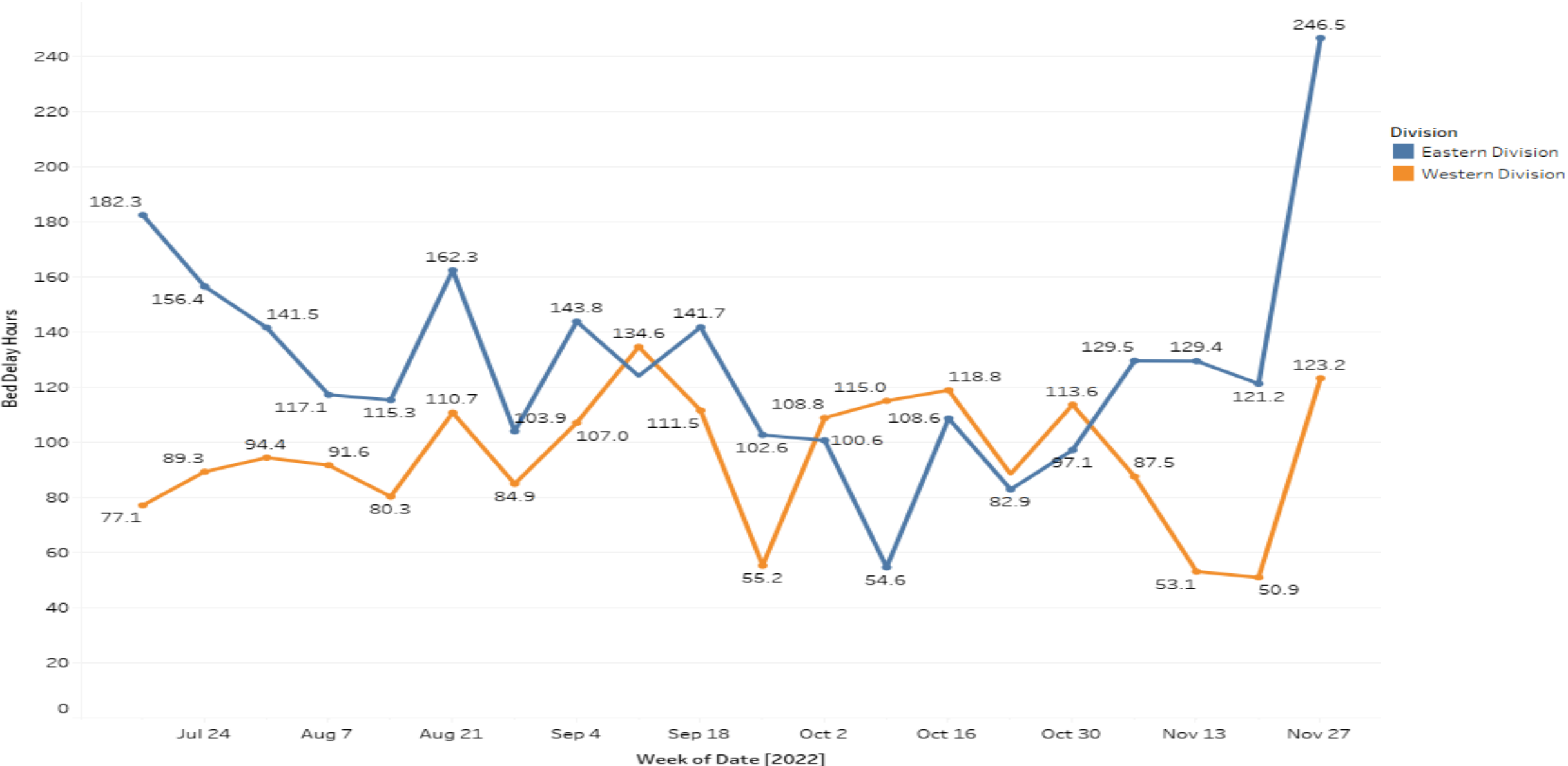


“To serve our communities’ pre-hospital needs through value-driven, compassionate, and clinically superior care.”

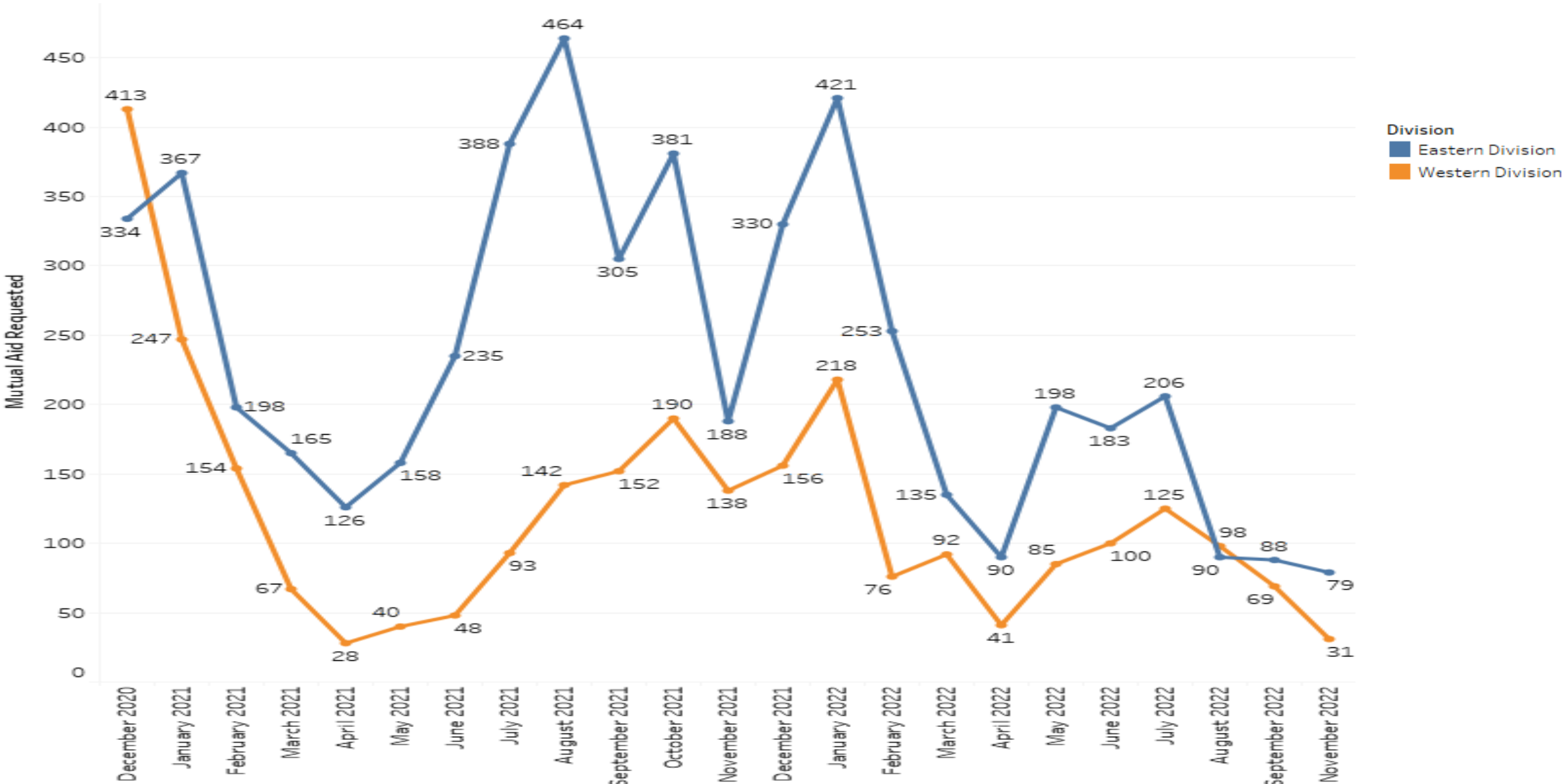




BED DELAY – BOTH DIVISIONS



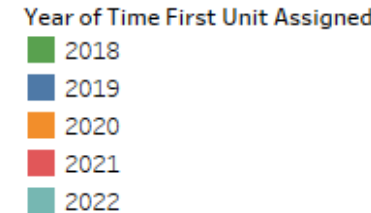
Mutual Aid Utilization – Both Divisions



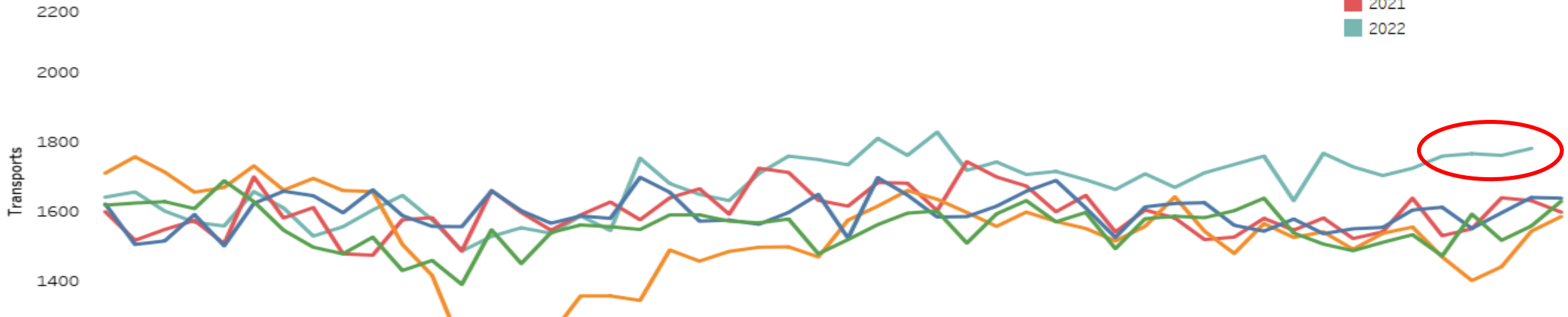
Year over Year Volume – Both Divisions

Division

Time First Unit Assigned



Eastern Division



Western Division

