

Compliance Summary

From March 01, 2021 to March 31, 2021

Eastern Division

Overall Compliance

	Priority 1			Priority 2			Priority 3			Priority 4		
	Inc.	Late	%	Inc.	Late	%	Inc.	Late	%	Inc.	Late	%
Tulsa 1	511	44	91%	1,069	33	96%	496	86	82%	5	1	80%
Tulsa 2	477	52	89%	918	39	95%	3	1	66%	2	0	100%
Tulsa 3	698	59	91%	1,389	89	93%	552	124	77%	5	2	60%
Tulsa Total	1,686	155	90%	3,376	161	95%	1,051	211	79%	12	3	75%
Sand Springs	67	22		138	9	84%	0	0	N/A	0	0	N/A
Jenks	37	11		72	11	79%	0	0	N/A	0	0	N/A
Bixby	29	5		66	12	82%	1	0	100%	0	0	N/A
Total Non-Beneficiary	133	38		276	32	82%	1	0	100%	0	0	N/A

Average Response Time Priority 1 & 2

Received to On Scene: 10:48

Dispatched to On Scene: 9:48

The beneficiary city of Tulsa must be above 90% each month. In the suburbs of Sand Springs, Jenks and Bixby, the total of Priority 1 and Priority 2 incidents are combined to get the compliance percentile each month. Each suburban city must be above 75% each month, and combined they must be over 90 %. Percentage figures above are rounded down as per the RFP.

Compliance Summary

From March 01, 2021 to March 31, 2021

Western Division Overall Compliance

	Priority 1			Priority 2			Priority 3			Priority 4		
	Inc.	Late	%	Inc.	Late	%	Inc.	Late	%	Inc.	Late	%
Oklahoma City 1	1,024	209	79%	1,740	126	92%	620	178	71%	28	7	75%
Oklahoma City 2	1,143	378	66%	1,649	179	89%	296	85	71%	9	3	66%
Edmond	176	66	62%	296	54	81%	97	44	54%	0	0	N/A
Total OKC & Edmond	2,343	653	72%	3,685	359	90%	1,013	307	69%	37	10	72%
Mustang	37	24		42	10	56%	7	3	57%	0	0	N/A
The Village	32	8		39	4	83%	0	0	N/A	0	0	N/A
Nichols Hills	6	2		7	1	76%	0	0	N/A	0	0	N/A
Total Non-Beneficiary	75	34		88	15	69%	7	3	57%	0	0	N/A

Average Response Time Priority 1 & 2

Received to On Scene: 13:06

Dispatched to On Scene: 11:36

The beneficiary city of Oklahoma City must be above 90% each month. In the suburbs of Mustang, The Village, and Nichols Hills, the total of Priority 1 and Priority 2 incidents are combined to get the compliance percentile each month. Each suburban city must be above 75% each month, and combined they must be over 90%. Percentage figures above are rounded down as per the RFP.

Compliance Summary
March 01, 2021 Year to March 31, 2021

Eastern Division
Non-discrimination

	Priority 1		
	Inc.	Late	%
District 1	511	44	91%
District 2	477	52	89%
District 3	698	59	91%

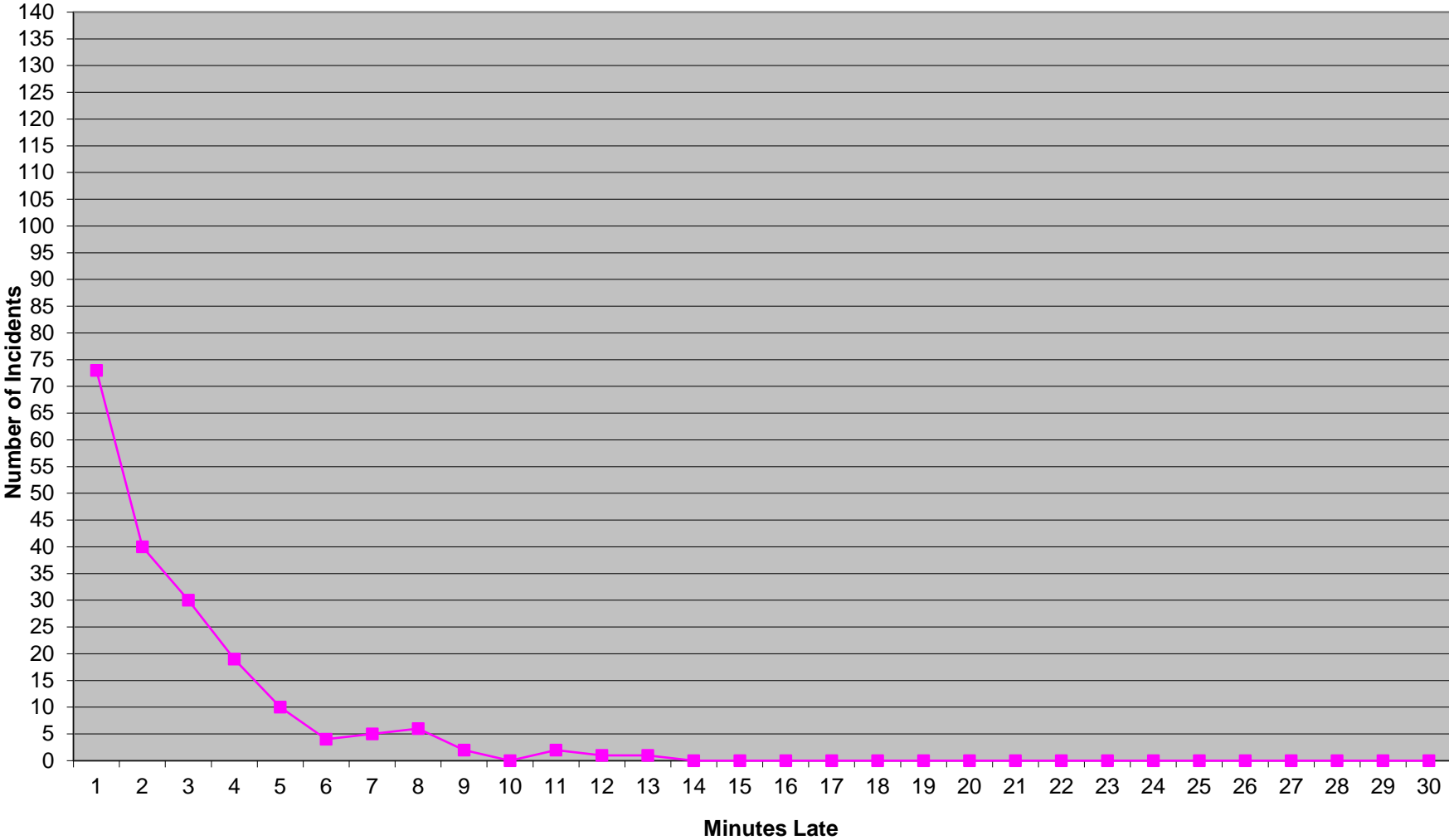
Each district within the Beneficiary City of Tulsa must be individually above 75% on Priority 1 transports (with a minimum of 100 incidents in each for measurement). Percentage figures above are rounded down as per the RFP.

Western Division
Non-discrimination

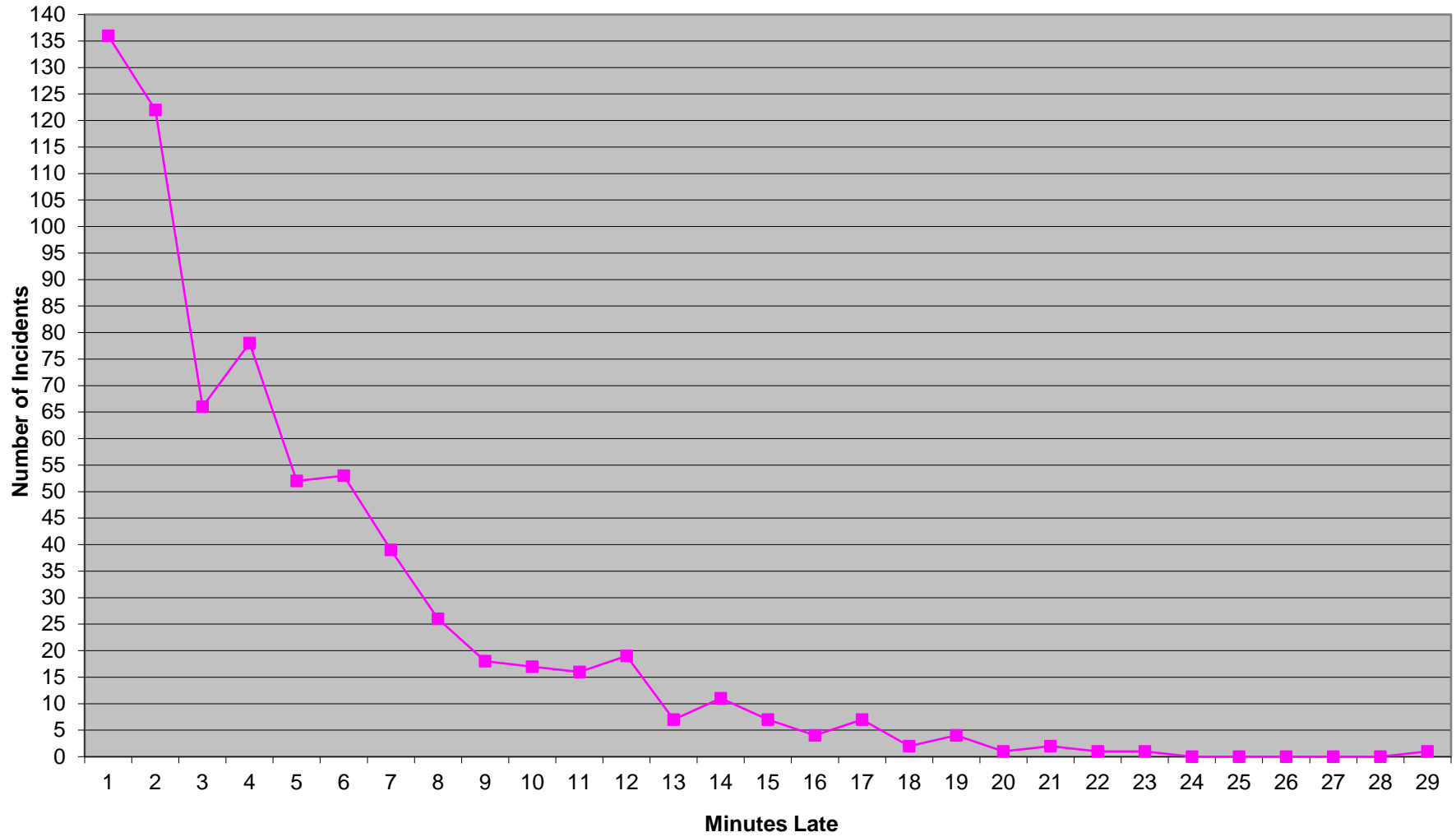
	Priority 1		
	Inc.	Late	%
District 1	1024	209	79%
District 2	1143	378	66%
Edmond	176	66	62%

Each district of the Western Division must be individually above 75% on Priority 1 transports (with a minimum of 100 incidents in each for measurement). Percentage figures above are rounded down as per the RFP.

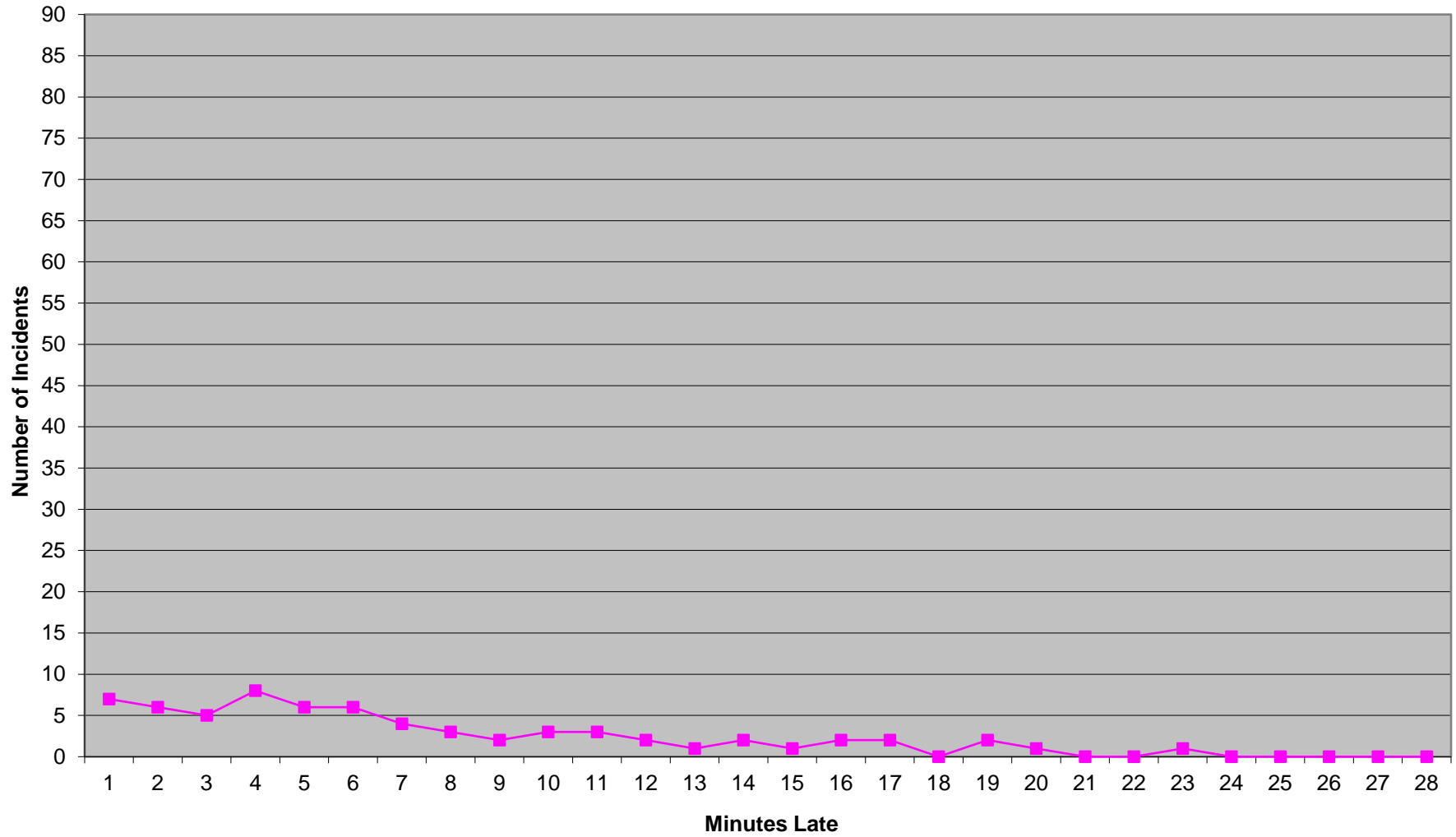
**Eastern Division Priority 1 Late Calls
March 2021**



Western Division Priority 1 Late Calls March 2021



Edmond Priority 1 Late Calls March 2021



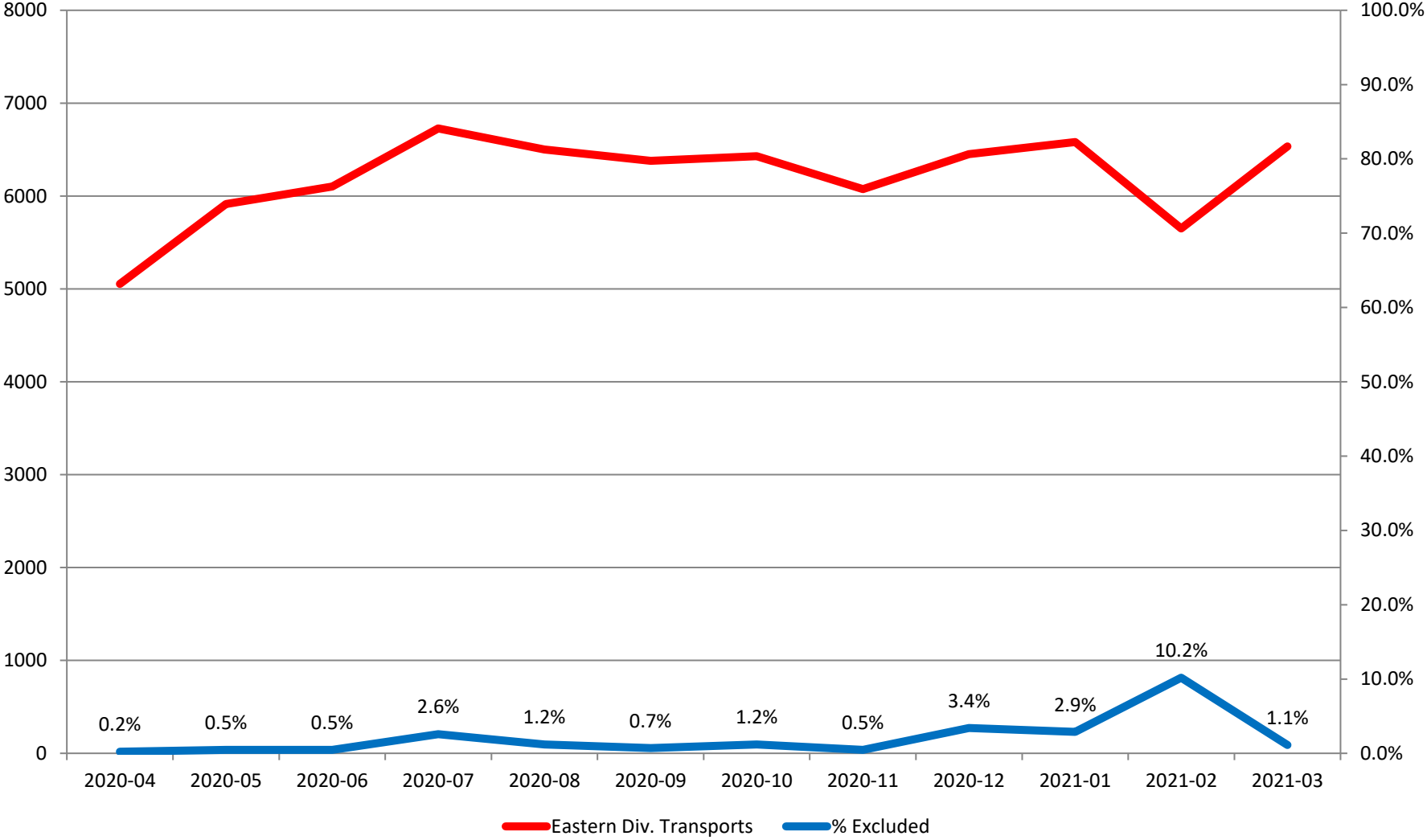
Response Time Exclusion Summary Report
 Three Months ending March, 2021

Month Priority	2021-01				2021-02				2021-03			
	1	2	3	4	1	2	3	4	5	6	7	8
Eastern Division												
Final Other												
Final Other Declared Disaster												
Final Other 2nd Unit												
Final Other Interfacility Transfer												
Final System Overload	40	76	11		21	24	17		23	25	3	
Final Weather	16	9	38		181	249	80	3	17	5		
Eastern Exclusions Total	56	85	49	0	202	273	97	3	40	30	3	0
East Transports*	1935	3573	1051	23	1507	3191	928	25	1819	3652	1052	12
East Late	265	221	322	4	131	114	134	1	193	193	211	3
East % of Transports	3%	2%	5%	0%	13%	9%	10%	12%	2%	1%	0%	0%
East Compliance**	86%	93%	69%	82%	91%	96%	85%	96%	89%	94%	79%	75%
East Compliance W/O Exclusions**	83%	91%	66%	82%	80%	88%	77%	85%	87%	93%	79%	75%
Western Division												
Final Other												
Final Other Declared Disaster												
Final Other 2nd Unit												
Final Other Interfacility Transfer												
Final System Overload	165	176	49		127	88	45	1	46	50	6	
Final Weather	53	17	0		304	293	84	0	29	17	14	
Western Exclusions Total	218	193	49	0	431	381	129	1	75	67	20	0
West Transports*	2385	3422	1072	9	1767	3145	868	12	2418	3773	1020	37
West Late	754	464	382	0	435	262	253	1	687	374	310	10
West % of Transports	9%	6%	5%	0%	24%	12%	15%	0%	3%	2%	2%	0%
West Compliance**	68%	86%	64%	100%	75%	91%	70%	91%	71%	90%	69%	72%
West Compliance W/O Exclusions**	62%	81%	61%	100%	60%	81%	61%	84%	69%	88%	68%	72%

* For the purposes of this report, transports means the number of transports that qualify for inclusion for compliance calculation purposes. Multi-unit response transports for greater than the first unit on

** For the purposes of this report, beneficiary and non-beneficiary cities have been combined. Contract compliance measures them separately.

Eastern Division Response Time Exclusions Twelve Months ending March, 2021



Western Division Response Time Exclusions Twelve Months ending March, 2021

