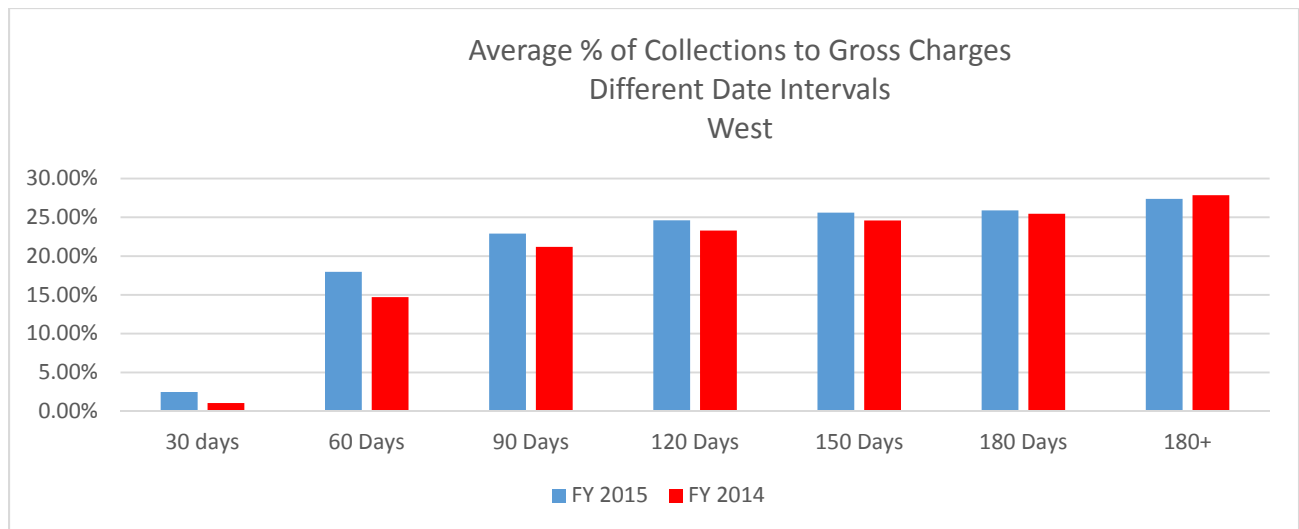
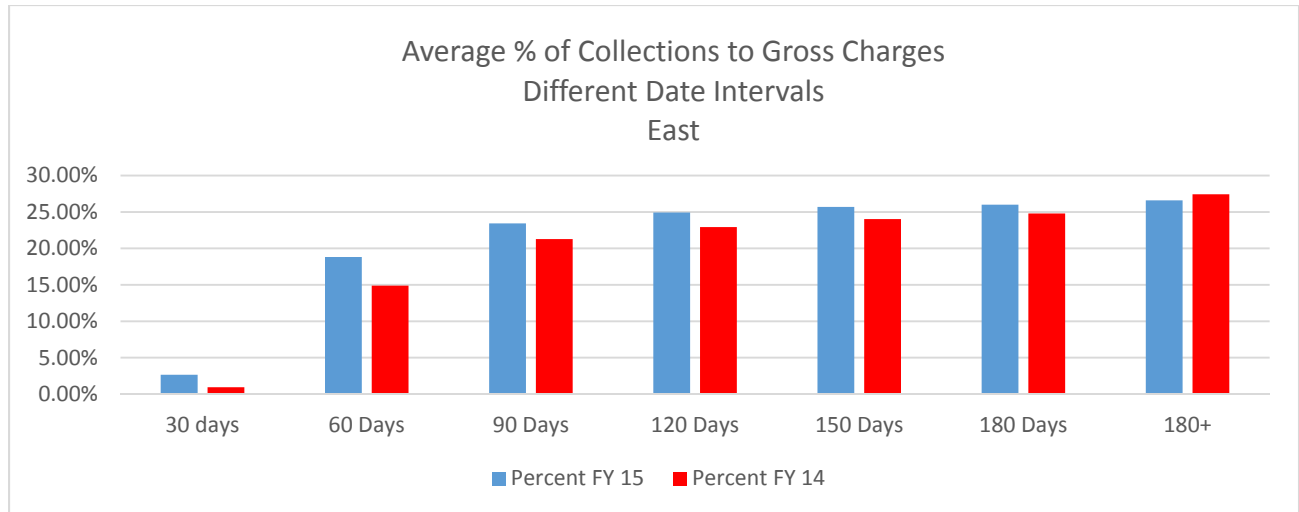
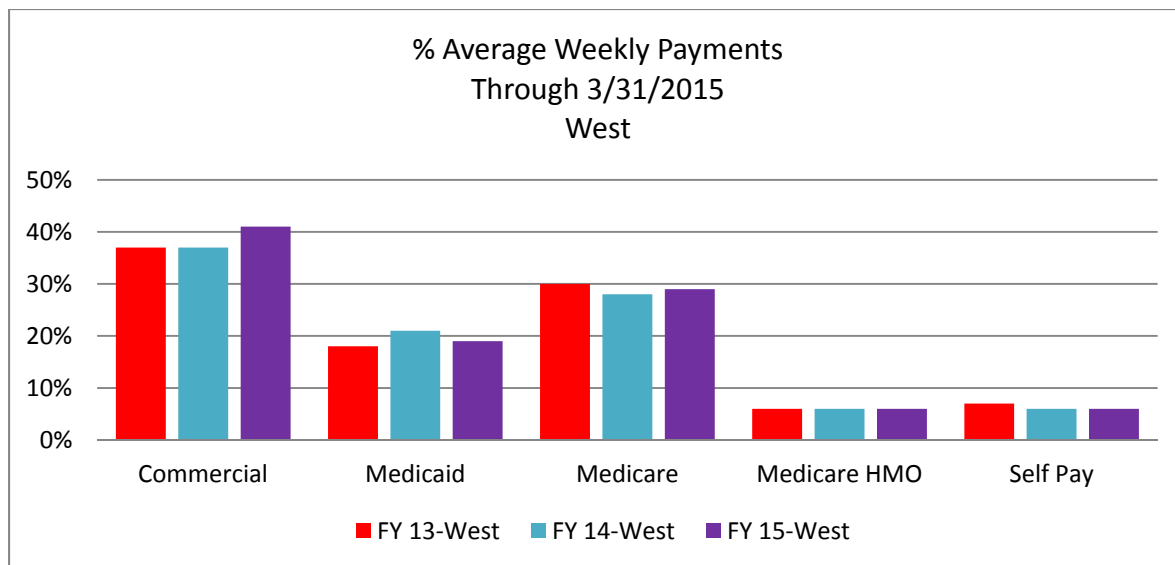
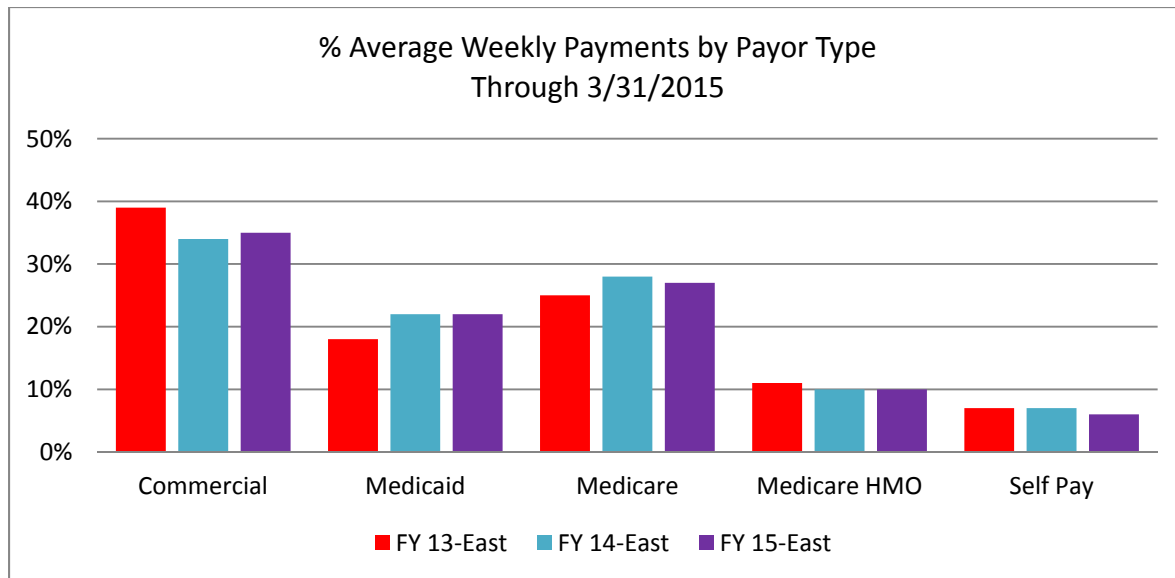


Patient Financial Services
Key Performance Indicators
March 2015

% Collected Compared to Gross Charges

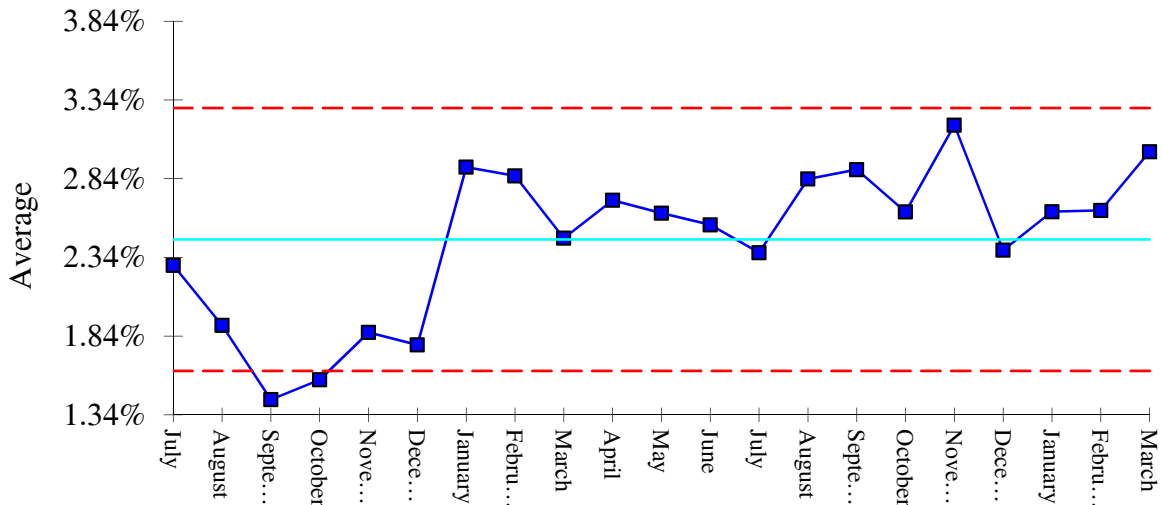




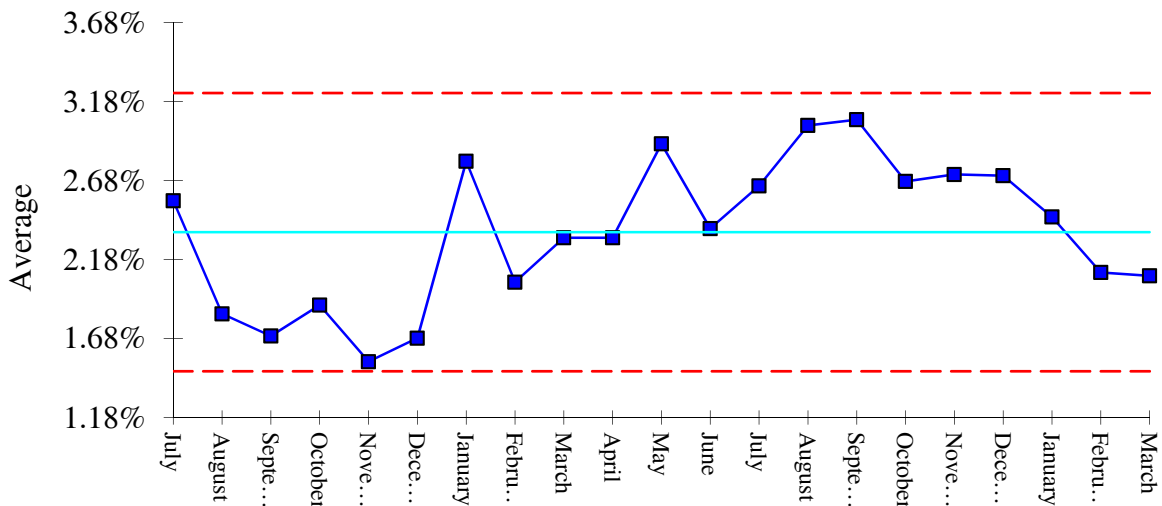
Higher Percent of Medicaid and Medicare HMO will result in lower cash due to lower payments and higher patient co-pays. Higher commercials could be less cash due higher deductibles.

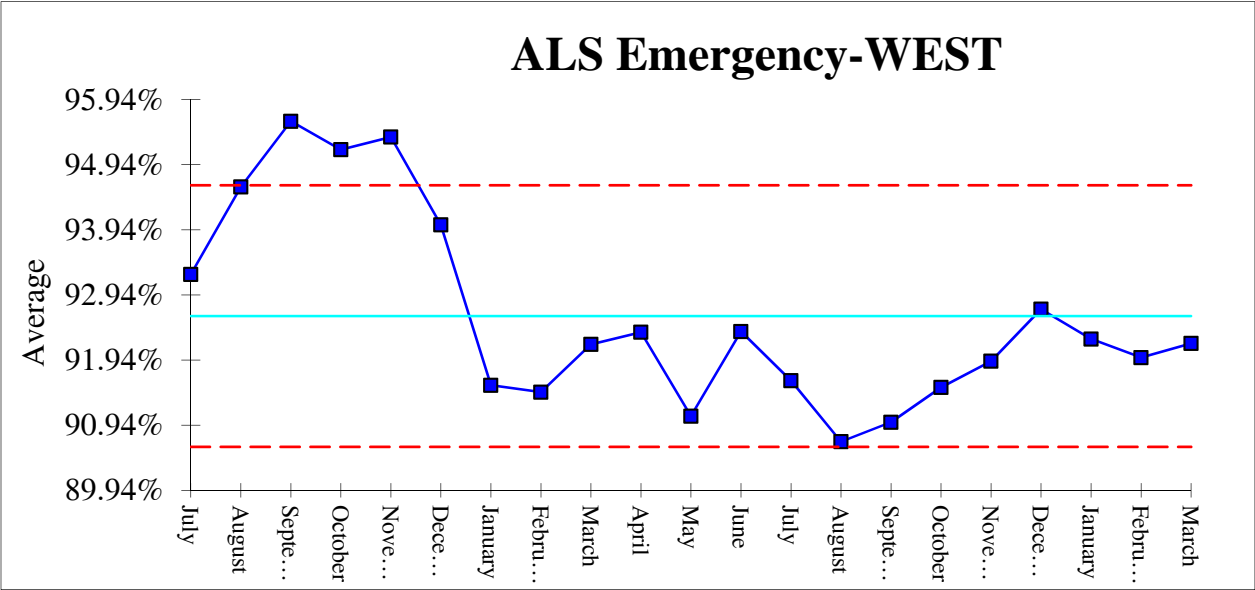
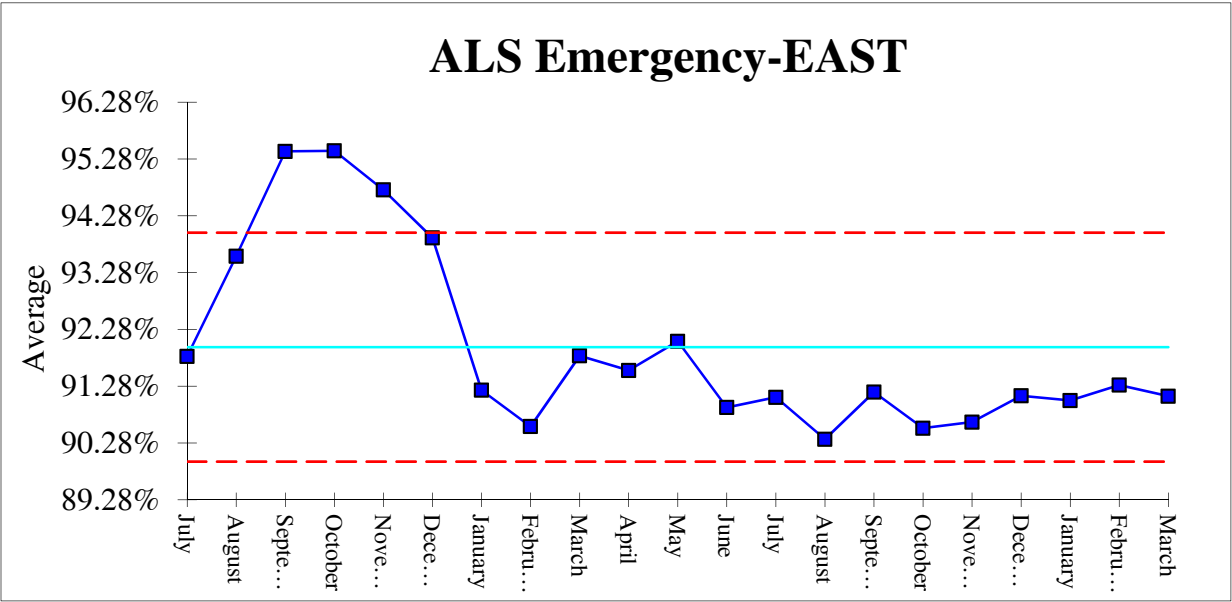
Levels of Service

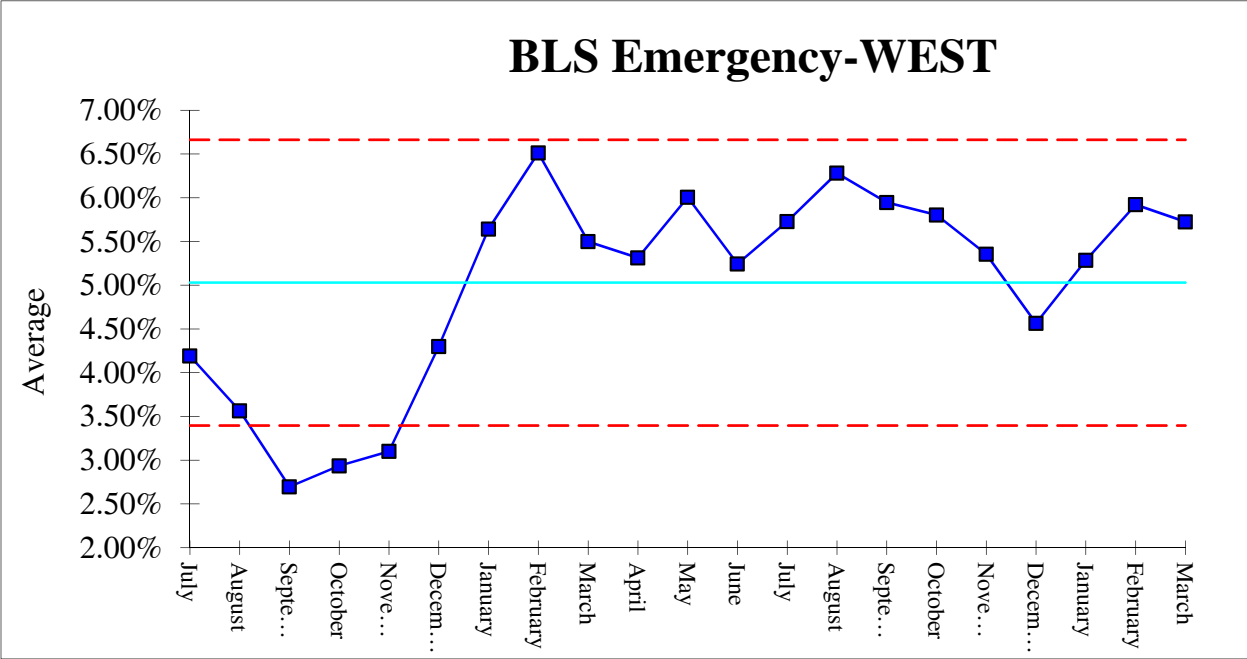
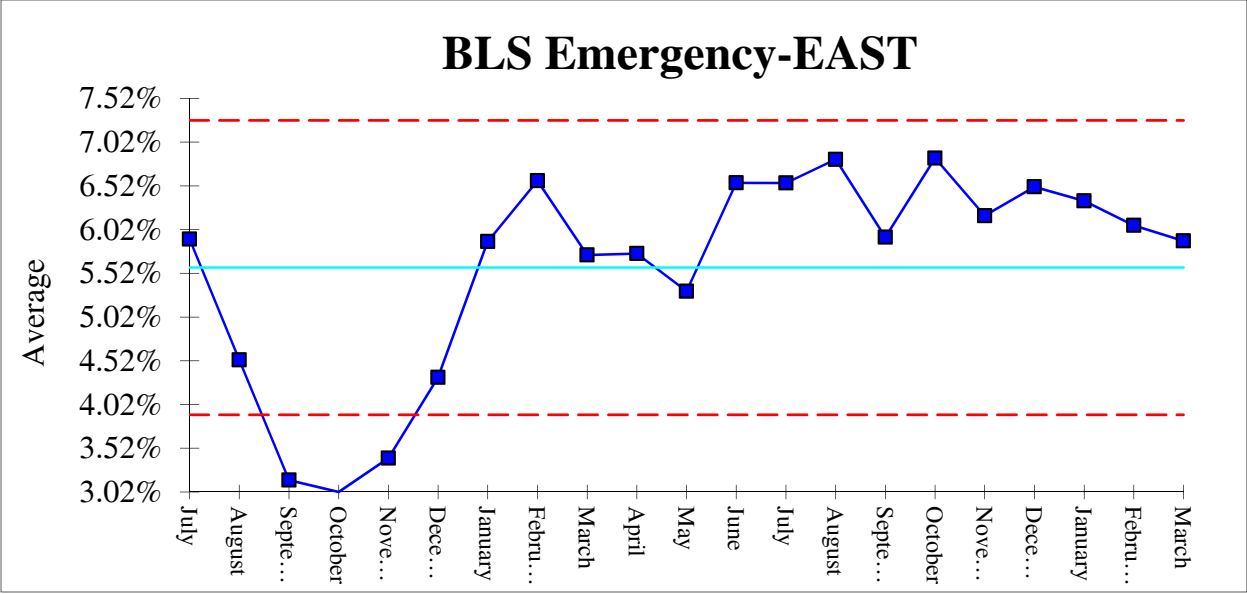
SCT/ALS2-EAST

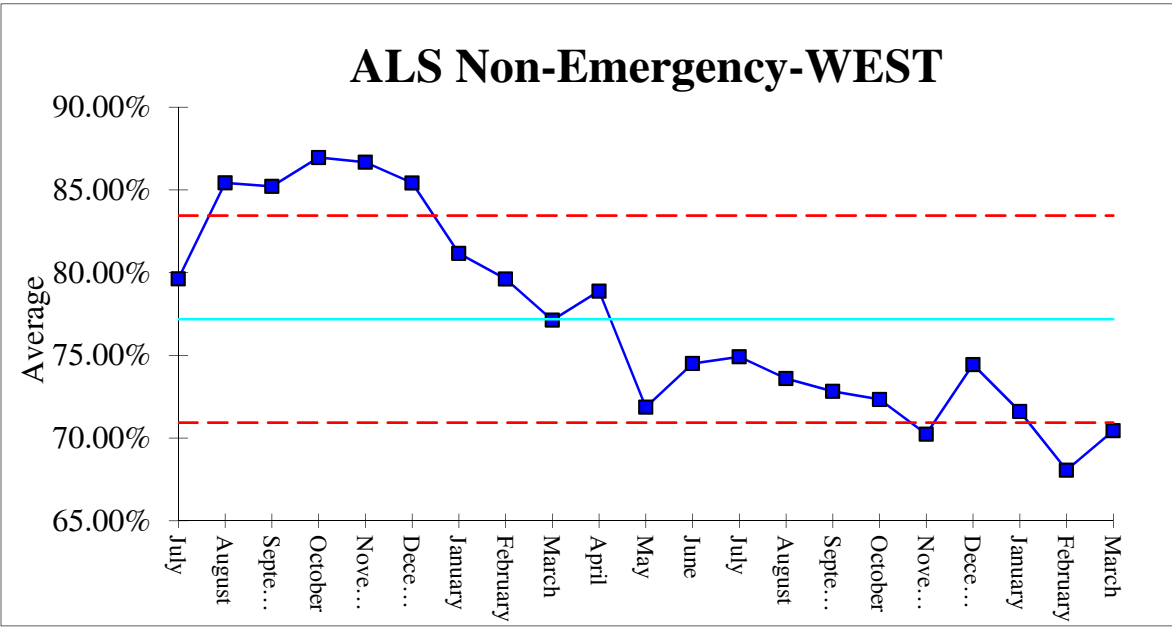
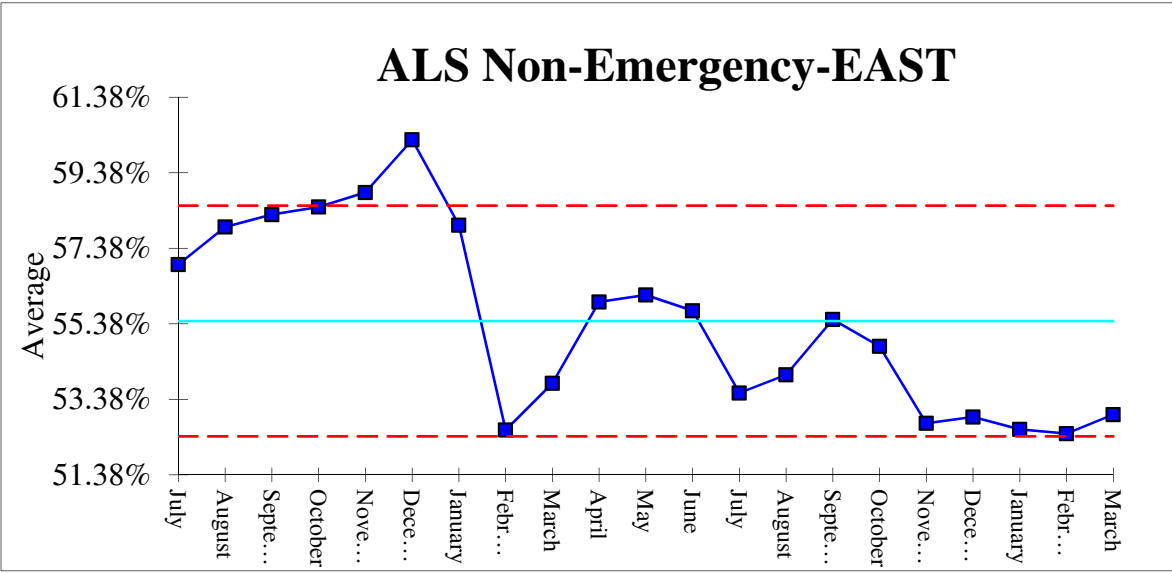


SCT/ALS2-WEST

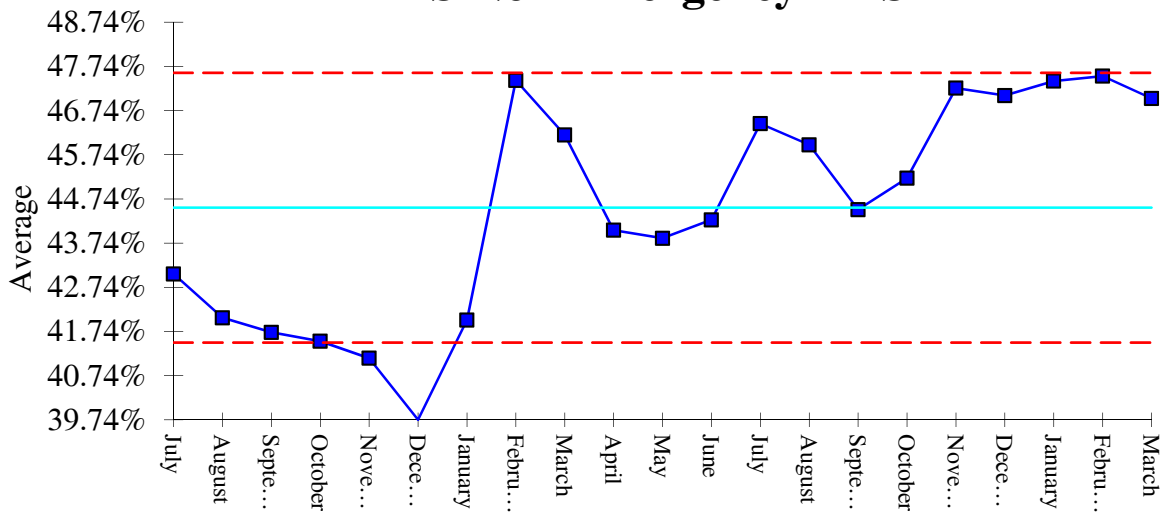




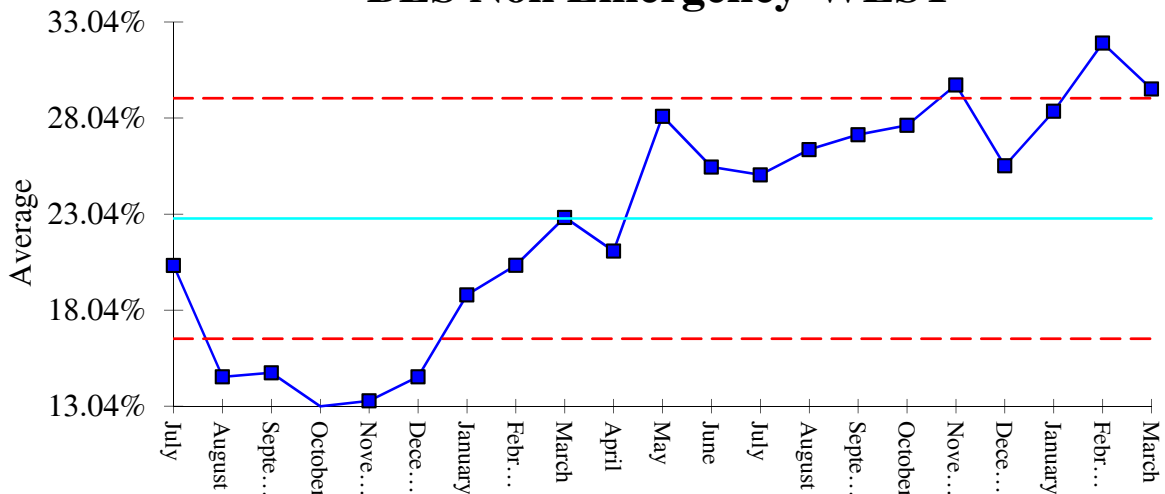




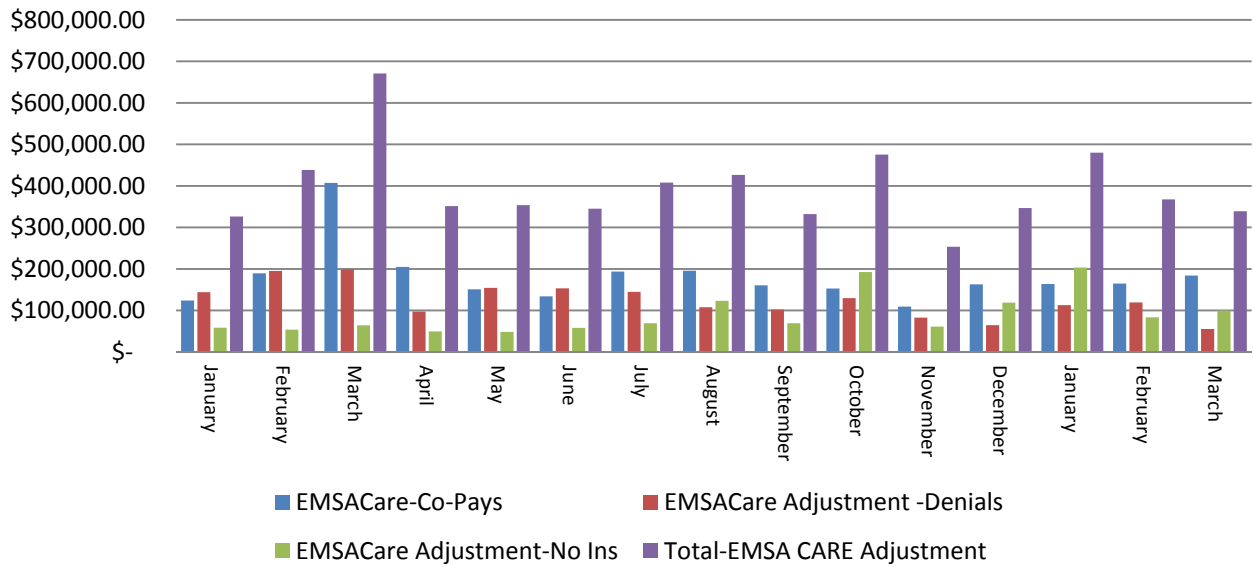
BLS Non Emergency-EAST



BLS Non Emergency-WEST



EMSACare Adjustments East



EMSACare Adjustments West

